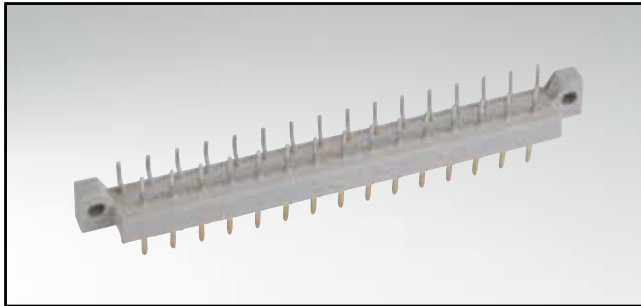


CONNECTOR ACCORDING TO DIN 41617

Male connector – angled – 13, 21 and 31 positions

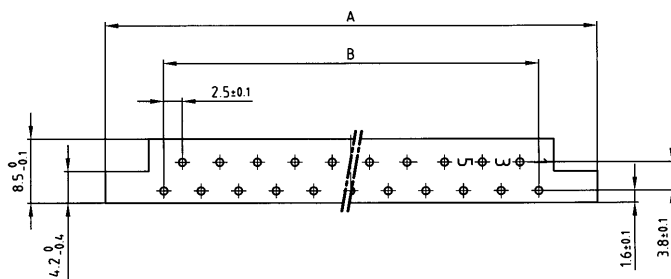


RoHS compliant

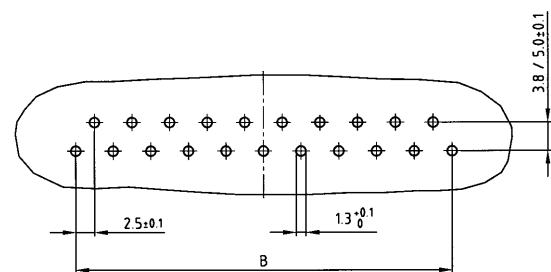
DESCRIPTION

- Solder pin
- Contact plating
 - standard quality classes 3 and 2
 - quality class 1 on request (*)
 - hard silver plated
- Standard insulator

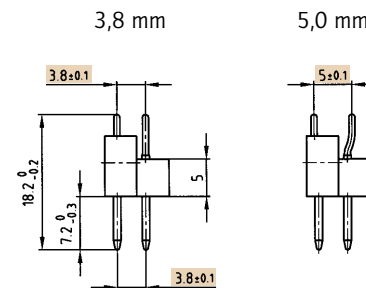
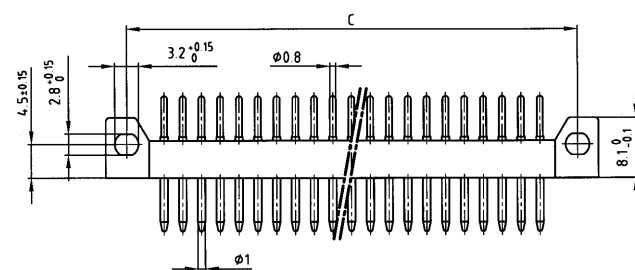
PRODUCT DRAWING



PCB-hole pattern



Contact spacing



No. of Pos.	A ±0.2	B ±0.1	C ±0.1
13	45.6	12x2.5=30	40
21	65.6	20x2.5=50	60
31	89.6	30x2.5=75	85

ORDER DATA

(Dim. = mm)

No. of Pos.	Contact spacing	hard silver plated	Quality class 3	Quality class 2	Quality class 1 *
13	3.8 mm	101 E 10049 X	101 A 10049 X	101 B 10049 X	101 C 10049 X
13	5.0 mm	101 E 10169 X	101 A 10169 X	101 B 10169 X	101 C 10169 X
21	3.8 mm	101 E 10059 X	101 A 10059 X	101 B 10059 X	101 C 10059 X
21	5.0 mm	101 E 10179 X	101 A 10179 X	101 B 10179 X	101 C 10179 X
31	3.8 mm	101 E 10069 X	101 A 10069 X	101 B 10069 X	101 C 10069 X
31	5.0 mm	101 E 10189 X	101 A 10189 X	101 B 10189 X	101 C 10189 X

Mouser Electronics

Authorized Distributor

Click to View Pricing, Inventory, Delivery & Lifecycle Information:

Amphenol:

[102B10039X](#) [102C10089X](#) [101A10139X](#) [101A10149X](#) [101A10169X](#) [101A10159X](#) [102A10089X](#) [101A10099X](#)
[101A10179X](#) [101A10109X](#) [101A10189X](#) [102A10019X](#) [102A10049X](#) [102A10069X](#) [101A10059X](#) [102A10029X](#)
[101A10019X](#)