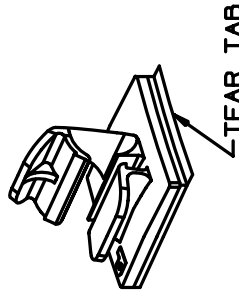
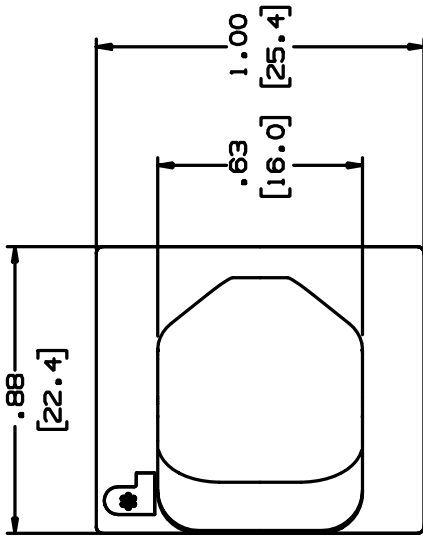


THIS COPY IS PROVIDED ON A RESTRICTED BASIS AND IS NOT TO BE USED IN ANY WAY DETRIMENTAL TO THE INTERESTS OF PANDUIT CORP.



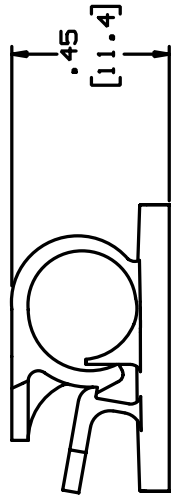
FULL SCALE

PANDUIT PART NUMBER*	MAXIMUM CABLE DIA. in. (mm)	WEIGHT lbs. (g)/100pcs
LWC25-A	.25 (6.4)	.56 (255)

NOTES:
 * 1) SEE CURRENT PRICE SHEET FOR PART NUMBER SUFFIX DESIGNATION, FOR PACKAGE SIZE.

2) MOUNT IS DESIGNED TO SUPPORT .45lbs (204g) MAX WEIGHT ON A CLEAN DRY SMOOTH SURFACE.

TO APPLY LATCHING WIRE CLIP:
 1. REMOVE PROTECTIVE LINER
 2. PLACE IN DESIRED LOCATION
 3. APPLY PRESSURE TO TOP OF LATCHING WIRE CLIP



NO WARRANTY, EXPRESSED OR IMPLIED, IS MADE BY PANDUIT WITH RESPECT TO ADHESIVE BOND PERFORMANCE, AMONG OTHER THINGS, THE CONDITIONS UNDER WHICH THESE MOUNTS MAY BE APPLIED, AND/OR THE SURFACE TO WHICH THEY MAY BE APPLIED, ARE BEYOND PANDUIT'S CONTROL.

ADHESIVE BACKING: PRESSURE SENSITIVE FOAM .04 (1.0) THICK WITH PROTECTIVE LINER TO EXTEND BEYOND EDGE FORMING A TEAR TAB.

DIMENSIONS IN BRACKETS ARE METRIC (mm)

ORD FILE#/REV# G80285BA-PB-LWC25A-02

PANDUIT CORP. TINLEY PARK, ILLINOIS

LWC25-A, LATCHING WIRE CLIP

UNLESS OTHERWISE SPECIFIED, DIMENSIONAL TOLERANCES ARE:

(-X) ±0.05 (1.3) (.XXX) ±0.010 (0.25)
 (.XX) ±0.02 (0.5) ANGLES ±5°

UNLESS OTHERWISE SPECIFIED, ALL DIMENSIONS ARE GIVEN IN INCHES, THIRD ANGLE PROJECTION.

DRAWN BY JRJ MAT'L S

SCALE 2X

DATE 10-19-92

NYLON 6/6

DRAWING NO. G80285BA

ORD

SIZE A

REV DATE BY CHK DESCRIPTION ECN - R CUST SUP

2 1-8-88 C8SM CHANGED NOTE 3 ON APPLICATION INSTRUCTIONS G80285BA 2

1 12-18-92 JRL CHG. WT. .56 WAS .66 ADDED .56 DIM. G80285BA 1

R 10-19-92 JRL INITIAL RELEASE G80285BA R

ECN - R CUST SUP