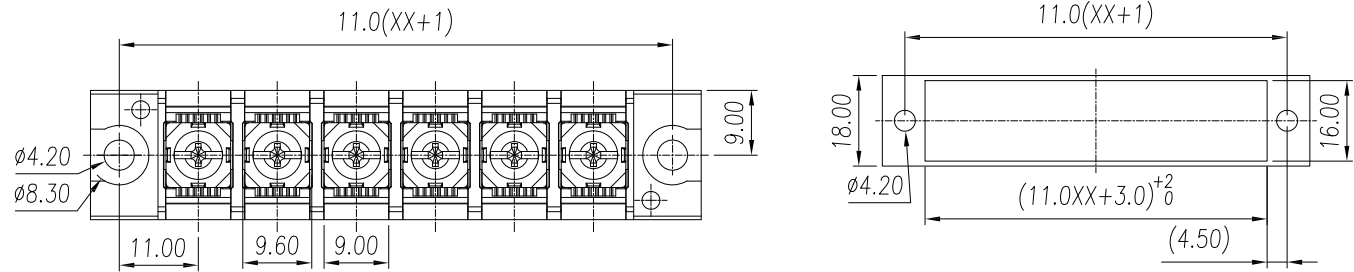
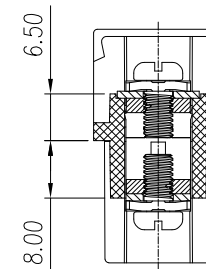
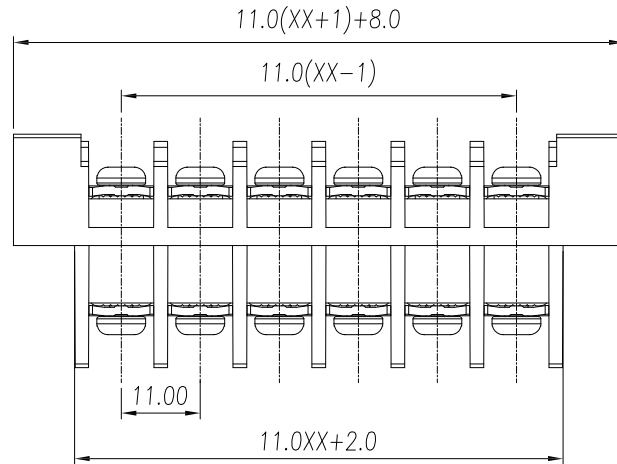
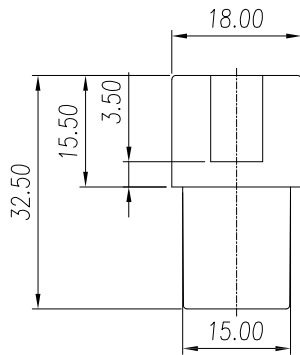


APPROVED: _____
 DATE: _____ TITLE: _____

Rev	AWO #	Description	Date	Appr
-		RELEASED	11/26/18	



RECOMMENDED P.C.B LAYOUT



Poles: 02 thru 15

linear dimension (Tolerances Standard)								—	∕	⊥
variable	to	over	over	over	over	over	over	to	to	to
range	6	6	10	30	60	100	160	10	100	100
tolerance	±0.20	±0.30	±0.50	±0.70	±1.00	±1.30	±1.60	0.10	0.30	0.60

SPECIFICATIONS:

Material:
 Insulator: PBT, rated UL 94V-0
 Insulator color: Black
 Contacts: Copper Alloy, Tin plated
 Screw: M4 Steel
 Electrical:
 Voltage rating: 300 V
 Current rating: 30 A
 Dielectric withstanding voltage: 2,000 VAC for 1 minute
 Mechanical:
 Wire Range: 22~10 AWG
 Torque: 1.8 (N.m)
 Temperature Rating:
 Operating temperature: -40°C to +130°C
 Environmental:
 Lead free, RoHS compliant.



UNLESS OTHERWISE SPECIFIED
 ALL DIMENSIONS ARE MILLIMETERS
 TOLERANCES: EXCEPT AS NOTED

SEE CHART

ADAM
TECH
INTERCONNECTS

909 Rahway Avenue,
 Union, NJ 07083
 Phone: 908-687-5000
 Fax: 908-687-5710

APPROVALS		DATE
DRAWN	AY	11/26/18
CHECKED	AC	11/26/18
APPROVED		

TITLE			
TERMINAL BLOCK, .433 [11.00] PITCH			
SIZE	PART NO.	REV.	
X	TBU-XX-W1	-	
REF:	S00067C	SCALE:	NTS SHEET 1 OF 1