

PLEASE CHECK WWW.MOLEX.COM FOR LATEST PART INFORMATION

Part Number:

0444321602

Status:

Active

Overview:

Micro-Fit Connector System

Description:

Micro-Fit BMI Header, Dual Row, Vertical, with PCB Polarizing Peg, 16 Circuits, 0.38µm Gold (Au) Selective Plating, Kinked Tails

Documents:

- 3D Model (PDF)

3D Model

Drawing (PDF)

Product Specification PS-44300-001-001 (PDF)

Packaging Specification PK-44432-001-001 (PDF)
- Datasheet (PDF)

Symbol Footprint Data SYM-44432-1601-001 (PDF)

Symbol Footprint Data SYM-44432-160X-001 (PDF)

RoHS Certificate of Compliance (PDF)

Agency Certification

CSA

LR19980

UL

E29179

General

Product Family

PCB Headers

Series

44432

Application

Board-to-Board, Power, Wire-to-Board

Comments

High Temperature|Square Pin|Solder Type

Overview

Micro-Fit Connector System

Product Name

Micro-Fit BMI

UPC

800756378138

Physical

Breakaway

No

Circuits (Loaded)

16

Circuits (maximum)

16

Color - Resin

Black

Durability (mating cycles max)

30

Flammability

94V-0

Glow-Wire Capable

No

Material - Metal

Brass

Material - Plating Mating

Gold

Material - Plating Termination

Tin

Material - Resin

High Temperature Thermoplastic

Net Weight

2.792/g

Number of Rows

2

Orientation

Vertical

PC Tail Length

3.30mm

PCB Locator

Yes

PCB Retention

Yes

PCB Thickness - Recommended

1.60mm

Packaging Type

Tray

Pitch - Mating Interface

3.00mm

Plating min - Mating

0.381µm

Plating min - Termination

2.540µm

Polarized to Mating Part

Yes

Polarized to PCB

Yes

Shrouded

Fully

Stackable

No

Surface Mount Compatible (SMC)

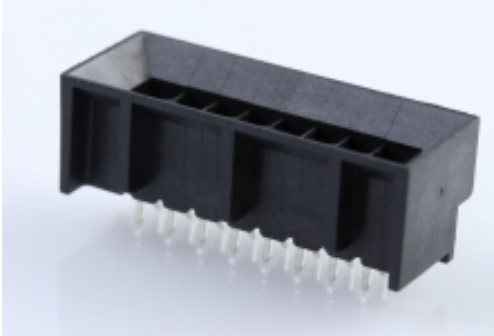
No

Temperature Range - Operating

-40° to +105°C

Termination Interface: Style

Through Hole



Series image - Reference only

EU ELV

Not Relevant

EU RoHS

Compliant

China RoHS

REACH SVHC

Not Contained Per -
D(2021)4569-DC (8
July 2021)

Halogen-Free

Status

Not Low-Halogen

For more information, please visit [Contact US](#)

China ROHS

Green Image

ELV

Not Relevant

RoHS Phthalates

Not Contained

Search Parts in this Series

44432 Series

Mates With

44133 Micro-Fit BMI Panel Mount
Receptacle Housing, 44764 Micro-Fit BMI
Receptacle Header, 44769 Micro-Fit BMI
Receptacle Header

Electrical

Current - Maximum per Contact	8.5A
Voltage - Maximum	250V AC (RMS)/DC

Solder Process Data

Duration at Max. Process Temperature (seconds)	005
Lead-freeProcess Capability	WAVE
Max. Cycles at Max. Process Temperature	001
Process Temperature max. C	260

Material Info

Reference - Drawing Numbers

Packaging Specification	PK-44432-001-001
Product Specification	PS-44300-001-001
Sales Drawing	SD-44432-001-001
Symbol/Footprint Data	SYM-44432-1601-001, SYM-44432-160X-001

This document was generated on 09/13/2021

PLEASE CHECK WWW.MOLEX.COM FOR LATEST PART INFORMATION

Mouser Electronics

Authorized Distributor

Click to View Pricing, Inventory, Delivery & Lifecycle Information:

Molex:

44432-1602