

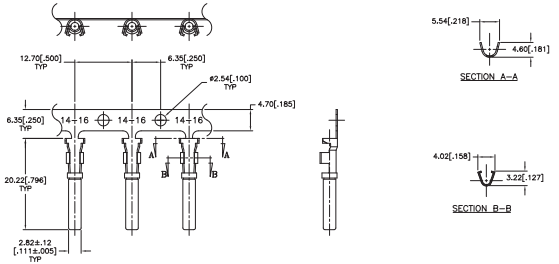
STAMPED AND FORMED CONTACTS, PG 1 of 2

Click on [blue underlined part numbers](#) to be taken to their spec sheets.

OPTIONS

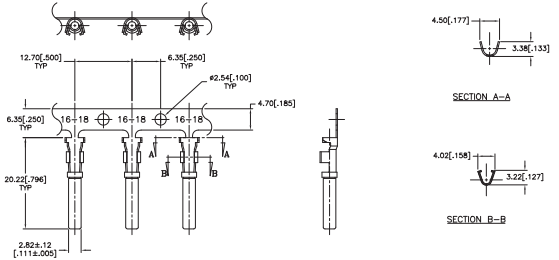
PART NUMBER: [AT62-14-01XX](#)
DESCRIPTION: CONTACT, SOCKET, STAMPED, SIZE 16

MATERIAL:
 CONTACT BODY: COPPER ALLOY
 HOOD: STAINLESS STEEL
PLATING SUFFIX CODE:
 XX=22 NICKEL PLATING
 XX=44 GOLD PLATING
CONTACT GENERAL DATA SPECIFICATION: S2-15217
AVAILABLE CRIMPERS: ATT-16-00, MFX-3950 & MFX-3953
CRIMPER SPECIFICATIONS: S2-15223 & S2-15224
CRIMP INFORMATION DRAWING: S2-15221 & S2-15222
CONTACTS PER REEL: APPROX. 4000 (PARTIAL REELS AVAILABLE)



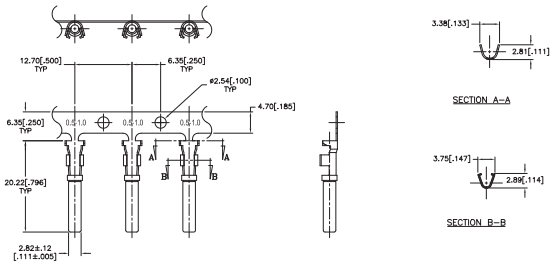
PART NUMBER: [AT62-16-01XX](#)
DESCRIPTION: CONTACT, SOCKET, STAMPED, SIZE 16

MATERIAL:
 CONTACT BODY: COPPER ALLOY
 HOOD: STAINLESS STEEL
PLATING SUFFIX CODE:
 XX=22 NICKEL PLATING
 XX=44 GOLD PLATING
CONTACT GENERAL DATA SPECIFICATION: S2-15217
AVAILABLE CRIMPERS: ATT-16-00, ATT-16-01, MFX-3950 & MFX-3953
CRIMPER SPECIFICATIONS: S2-15223 & S2-15224
CRIMP INFORMATION DRAWING: S2-15221 & S2-15222
CONTACTS PER REEL: APPROX. 4000 (PARTIAL REELS AVAILABLE)



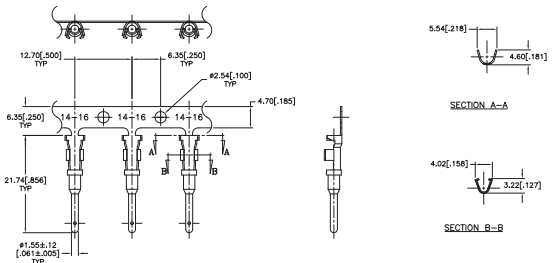
PART NUMBER: [AT62-16-06XX](#)
DESCRIPTION: CONTACT, SOCKET, STAMPED, SIZE 16

MATERIAL:
 CONTACT BODY: COPPER ALLOY
 HOOD: STAINLESS STEEL
PLATING SUFFIX CODE:
 XX=22 NICKEL PLATING
 XX=44 GOLD PLATING
CONTACT GENERAL DATA SPECIFICATION: S2-15217
AVAILABLE CRIMPERS: ATT-16-01, MFX-3950 & MFX-3953
CRIMPER SPECIFICATIONS: S2-15223 & S2-15224
CRIMP INFORMATION DRAWING: S2-15221 & S2-15222
CONTACTS PER REEL: APPROX. 4000 (PARTIAL REELS AVAILABLE)



PART NUMBER: [AT60-14-01XX](#)
DESCRIPTION: CONTACT, PIN, STAMPED, SIZE 16

MATERIAL: COPPER ALLOY
PLATING SUFFIX CODE:
 XX=22 NICKEL PLATING
 XX=44 GOLD PLATING
CONTACT GENERAL DATA SPECIFICATION: S2-15217
AVAILABLE CRIMPERS: ATT-16-00, MFX-3950 & MFX-3953
CRIMPER SPECIFICATIONS: S2-15223 & S2-15224
CRIMP INFORMATION DRAWING: S2-15221 & S2-15222
CONTACTS PER REEL: APPROX. 4000 (PARTIAL REELS AVAILABLE)

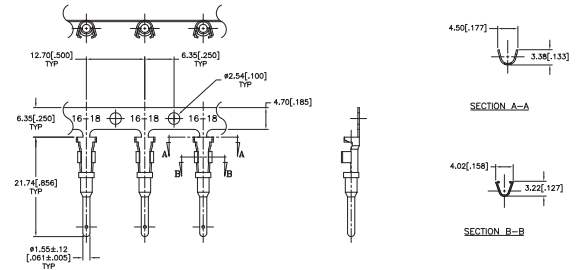


STAMPED AND FORMED CONTACTS, PG 2 of 2

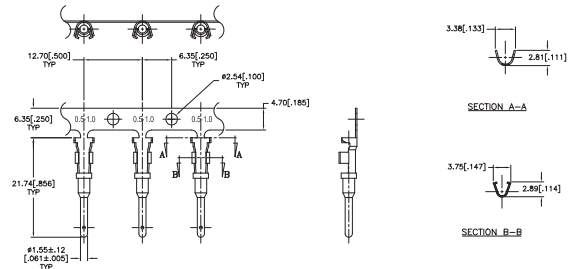
Click on [blue underlined part numbers](#) to be taken to their spec sheets.

OPTIONS

PART NUMBER: [AT60-16-01XX](#)
DESCRIPTION: CONTACT, PIN, STAMPED, SIZE 16
MATERIAL: COPPER ALLOY
PLATING SUFFIX CODE:
 XX=22 NICKEL PLATING
 XX=44 GOLD PLATING
CONTACT GENERAL DATA SPECIFICATION: S2-15217
AVAILABLE CRIMPERS: ATT-16-00, ATT-16-01, MFX-3950 & MFX-3953
CRIMPER SPECIFICATIONS: S2-15223 & S2-15224
CRIMP INFORMATION DRAWING: S2-15221 & S2-15222
CONTACTS PER REEL: APPROX. 4000 (PARTIAL REELS AVAILABLE)



PART NUMBER: [AT60-16-06XX](#)
DESCRIPTION: CONTACT, PIN, STAMPED, SIZE 16
MATERIAL: COPPER ALLOY
PLATING SUFFIX CODE:
 XX=22 NICKEL PLATING
 XX=44 GOLD PLATING
CONTACT GENERAL DATA SPECIFICATION: S2-15217
AVAILABLE CRIMPERS: ATT-16-01, MFX-3950 & MFX-3953
CRIMPER SPECIFICATIONS: S2-15223 & S2-15224
CRIMP INFORMATION DRAWING: S2-15221 & S2-15222
CONTACTS PER REEL: APPROX. 4000 (PARTIAL REELS AVAILABLE)



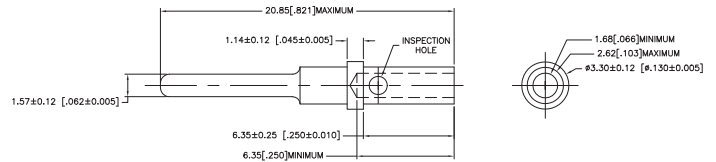
SOLID/MACHINED CONTACTS

Click on [blue underlined part numbers](#) to be taken to their spec sheets.

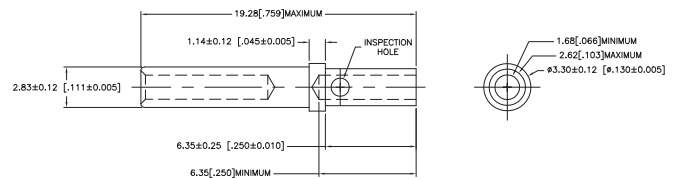
OPTIONS

MILITARY-STYLE

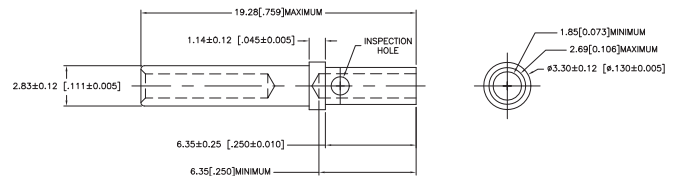
PART NUMBER: [AT60-202-16XX](#)
DESCRIPTION: CONTACT, PIN, SOLID MACHINED, SIZE 16
MATERIAL: COPPER ALLOY
PLATING SUFFIX CODE:
 XX=141 NICKEL PLATING
 XX=31 GOLD PLATING
CONTACT GENERAL DATA SPECIFICATION: S2-15217
AVAILABLE CRIMPERS: CA-5D12 & CA-5E12
CRIMPER SPECIFICATIONS: S2-15219 & S2-15220
CRIMP INFORMATION DRAWING: S2-15218



PART NUMBER: [AT62-201-16XX](#)
DESCRIPTION: CONTACT, SOCKET, SOLID MACHINED, SIZE 16
MATERIAL:
 CONTACT BODY: COPPER ALLOY
 HOOD: STAINLESS STEEL
PLATING SUFFIX CODE:
 XX=141 NICKEL PLATING
 XX=31 GOLD PLATING
CONTACT GENERAL DATA SPECIFICATION: S2-15217
AVAILABLE CRIMPERS: CA-5D12 & CA-5E12
CRIMPER SPECIFICATIONS: S2-15219 & S2-15220
CRIMP INFORMATION DRAWING: S2-15218

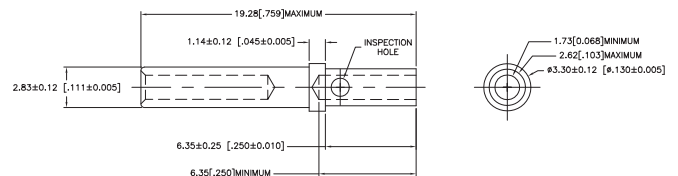


PART NUMBER: [65-54942-14](#)
DESCRIPTION: CONTACT, SOCKET, ROCKSOLID, SIZE 16
AWG RANGE: 14AWG
MATERIAL: COPPER ALLOY
PLATING: GOLD
CONTACT GENERAL DATA SPECIFICATION: S2-15217
AVAILABLE CRIMPERS: CA-5D12 & CA-5E12
CRIMPER SPECIFICATIONS: S2-15219 & S2-15220
CRIMP INFORMATION DRAWING: S2-15218

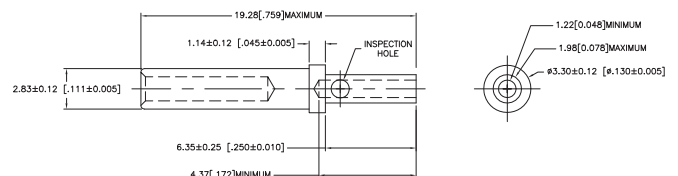


ROCKSOLID™ CONTACTS

PART NUMBER: [65-54942-16](#)
DESCRIPTION: CONTACT, SOCKET, ROCKSOLID, SIZE 16
AWG RANGE: 16AWG
MATERIAL: COPPER ALLOY
PLATING: GOLD
CONTACT GENERAL DATA SPECIFICATION: S2-15217
AVAILABLE CRIMPERS: CA-5D12 & CA-5E12
CRIMPER SPECIFICATIONS: S2-15219 & S2-15220
CRIMP INFORMATION DRAWING: S2-15218



PART NUMBER: [65-54942-20](#)
DESCRIPTION: CONTACT, SOCKET, ROCKSOLID, SIZE 16
AWG RANGE: 20AWG
MATERIAL: COPPER ALLOY
PLATING: GOLD
CONTACT GENERAL DATA SPECIFICATION: S2-15217
AVAILABLE CRIMPERS: CA-5D12 & CA-5E12
CRIMPER SPECIFICATIONS: S2-15219 & S2-15220
CRIMP INFORMATION DRAWING: S2-15218



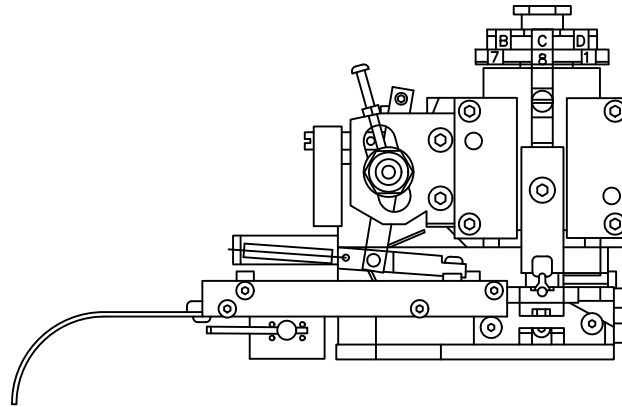
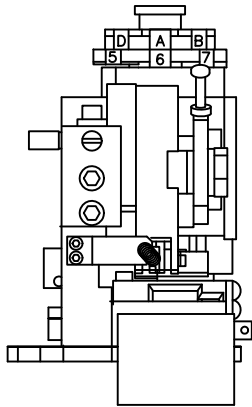
4

3

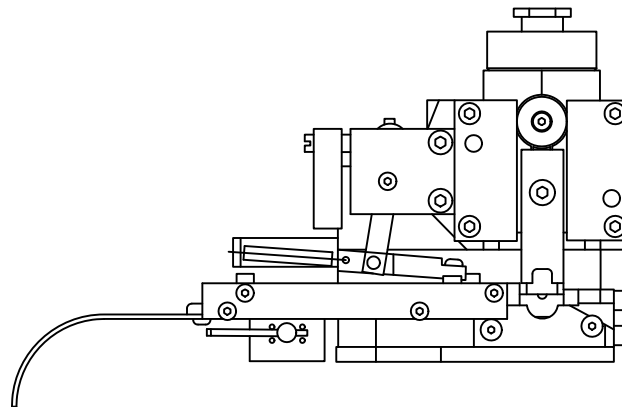
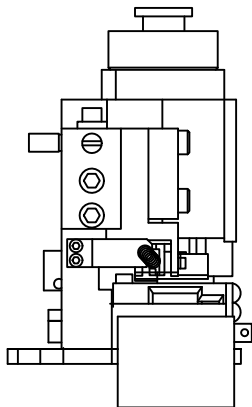
2

1

REVISIONS					
REV	ZONE	ECO	DESCRIPTION	DATE	BY APPR
A1	-	-	RELEASE NUMBER 016571	6/12/09	B.D.B. M.R.F.



SINE PART NUMBER	MFX-3950
DEUTSCH PART NUMBER	DCT16-02-00
TYCO PART NUMBER	1-3-1385344-1, 2, 3, 4, 5 & 7



SINE PART NUMBER	MFX-3953
DEUTSCH PART NUMBER	DCT1620-02-00

ALL REFERENCES TO DEUTSCH PRODUCTS OR SPECIFICATIONS ARE FOR COMPARISON PURPOSES ONLY, AND REFER TO DEUTSCH INDUSTRIAL PRODUCTS.

ALL REFERENCES TO TYCO PRODUCTS OR SPECIFICATIONS ARE FOR COMPARISON PURPOSES ONLY, AND REFER TO TYCO ELECTRONICS.

QUANTITY	PART NUMBER	DESCRIPTION	ITEM
MATERIALS LIST			
<small>UNLESS OTHERWISE SPECIFIED</small> 1) All dimensions are in inches. 2) Tolerances are as follows: 1 PL DEC ±0.05 Fractions ±1/64 2 PL DEC ±0.01 Angles ±1° 3 PL DEC ±0.005 3) Fabrication Standards Per: SS-20020 4) Note Reference =		SIGNATURES DATE DRAWN: BERNUM 6/9/09 CHECKED: FORCE 6/9/09 ENGINEER: BERNUM APPROVAL: BERNUM 6/9/09	SINE Systems Corporation A Subsidiary of Amphenol Corporation 44724 Morley Drive Clinton Township, MI 48036
MATERIAL SPECIFICATIONS: N/A		CUSTOMER: CRIMPER INFORMATION MFX-3950 & MFX-3953	REVISION: A1
PROCESS SPECIFICATIONS:		THE USE OF THIS DOCUMENT IS UNLIMITED. DESIGN FEATURES, SPECIFICATIONS, AND PERFORMANCE DATA SHOWN HEREON ARE THE PROPERTY OF AMPHENOL CORP. ALL DIMENSIONS ARE SUBJECT TO NORMAL MANUFACTURING VARIATIONS. DOCUMENTS REFERENCED HEREON MAY CONTAIN LIMITED RIGHTS DATA.	SIZE: C 1GK44 FSCM NO: S2-15224 DWG NO: S2-15224 SCALE: NONE SHEET 1 OF 1
NEXT ASSY:			

4

3

2

1

D

C

B

A

D

C

TITLE: CRIMPER INFORMATION

DWG NO: S2-15224

REV: A1

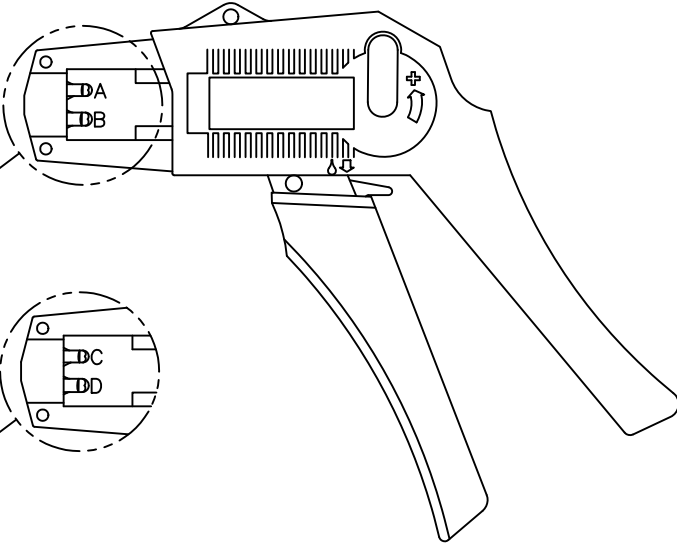
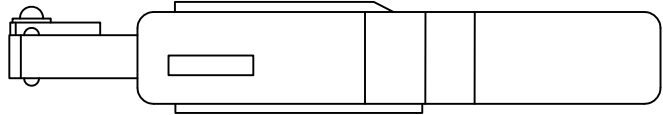
SH: 1

OF: 1

REVISIONS					
REV	ECO	DESCRIPTION	DATE	BY	APPR
A1	-	RELEASE NUMBER 016571	6/12/09	B.D.B.	M.R.F.

USE CRIMPER NUMBER:
ATT-16-00 WITH CAVITY A & B

CONTACT P/N:	INSULATION ϕ	CAVITY	WIRE SIZE
AT60-16-01** PIN	.075 - .140	B	1.5mm ²
AT62-16-01** SOC	[1.91 - 3.56]	A	16AWG
		A	1.0mm ²
AT60-14-01** PIN	.095 - .150	B	14AWG
AT62-14-01** SOC	[2.41 - 3.81]	B	2.0mm ²
		B	1.5mm ²
		A	1.5mm ²
		A	16AWG
		A	1.0mm ²
AT60-16-06** PIN	.055 - .100	A	16AWG
AT62-16-06** SOC	[1.40 - 2.54]	A	1.0mm ²



CAVITY VIEW OF
CRIMPER NUMBER
ATT-16-00

CAVITY VIEW OF
CRIMPER NUMBER
ATT-16-01

USE CRIMPER NUMBER:
ATT-16-01 WITH CAVITY C & D

CONTACT P/N:	INSULATION ϕ	CAVITY	WIRE SIZE
AT60-16-01** PIN	.075 - .140	D	18AWG
AT62-16-01** SOC	[1.91 - 3.56]	D	.75mm ²
AT60-16-06** PIN	.055 - .100	D	18AWG
AT62-16-06** SOC	[1.40 - 2.54]	D	.75mm ²
		C	.50mm ²

NOTES (UNLESS OTHERWISE SPECIFIED):

- ALL DIMENSIONS IN INCHES [MILLIMETERS]
- FOR PLATING CODES ** SEE CONTACT DATA DRAWINGS.
- THIS TOOL IS FOR CRIMPING SIZE 16 CONTACTS ONLY TO WIRES LISTED IN THE CHARTS.
- DEUTSCH IPD CROSS REFERENCE PART NUMBERS ARE DTT-16-00 AND DTT-16-01.

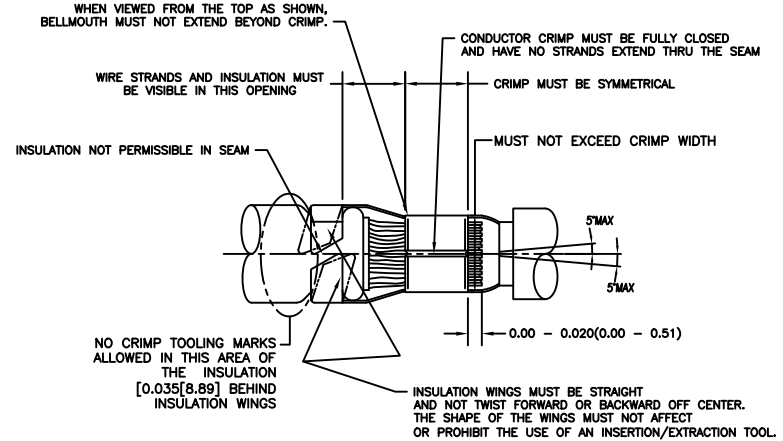
ALL REFERENCES TO DEUTSCH PRODUCTS OR SPECIFICATIONS ARE FOR COMPARISON PURPOSES ONLY, AND REFER TO DEUTSCH INDUSTRIAL PRODUCTS.

QUANTITY	PART NUMBER	DESCRIPTION	ITEM
MATERIALS LIST			
<small>UNLESS OTHERWISE SPECIFIED</small> 1) All dimensions are in inches. 2) Tolerances are as follows: 1 PL DEC ± 0.05 Fractions $\pm 1/64$ 2 PL DEC ± 0.01 Angles $\pm 1^\circ$ 3 PL DEC ± 0.005 3) Fabrication Standards Per: SS-20020 4) Note Reference =		SINE Systems Corporation A Subsidiary of Amphenol Corporation 44724 Morley Drive Clinton Township, MI 48036	
<small>SIGNATURES</small> DRAWN: BERNUM 6/8/09 CHECKED: FORCE 6/8/09 ENGINEER: BERNUM APPROVAL: BERNUM 6/8/09		<small>CUSTOMER:</small> INSTRUCTIONS, ATT-16-00 & 01 CRIMPER, HAND, STAMPED CONTACTS	
<small>MATERIAL SPECIFICATIONS:</small> N/A		<small>THE USE OF THIS DOCUMENT IS UNLIMITED. DESIGN FEATURES, SPECIFICATIONS, AND PERFORMANCE DATA SHOWN HEREON ARE THE PROPERTY OF AMPHENOL CORP. ALL DIMENSIONS ARE SUBJECT TO NORMAL MANUFACTURING VARIATIONS. DOCUMENTS REFERENCED HEREON MAY CONTAIN LIMITED RIGHTS DATA.</small>	
<small>PROCESS SPECIFICATIONS:</small> N/A		<small>SIZE</small> B	<small>FSCM NO./DWG NO.</small> S2-15223
<small>NEXT ASSY:</small> N/A		<small>SCALE</small> NONE	<small>REVISION</small> A1
		<small>SHEET</small> 1	<small>OF</small> 1

TITLE: INSTRUCTIONS, CRIMPER, HAND
DWG NO: S2-15223
REV: A1
SH: 1
OF: 1

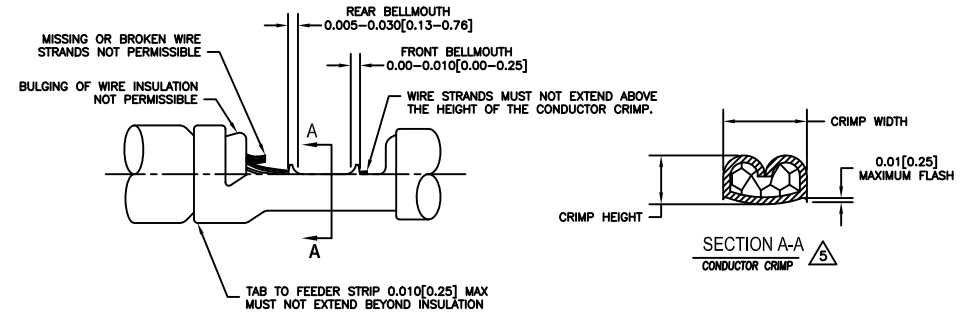
STAMPED CONTACT PART NUMBER 1060=PIN 1062=SOCKET	SIZE	CONDUCTOR WIRE SIZE	CRIMP HEIGHT	CRIMP WIDTH	CONDUCTOR PUNCH NUMBER	CONDUCTOR ANVIL NUMBER	CRIMP TENSILE REFERENCE LBS[N]
			$+0.001-0.002$ INCH $[+0.03-0.05$ mm]	± 0.003 INCH $[\pm 0.08$ mm]			
AT60-14-01xx AT62-14-01xx INSULATION RANGE 0.095-0.150[2.41-3.81]	16	14 AWG	0.055[1.40]	0.094[2.39]	AT17-002-0200	AT17-101-0200	25[111]
		2.00mm ²	0.055[1.40]	0.094[2.39]			
		1.50mm ²	0.053[1.35]	0.094[2.39]			
		16 AWG	0.050[1.27]	0.094[2.39]			
		1.00mm ²	0.050[1.27]	0.094[2.39]			
AT60-16-01xx AT62-16-01xx INSULATION RANGE 0.075-0.140[1.91-3.56]	16	14 AWG	0.055[1.40]	0.094[2.39]	AT17-002-0200	AT17-101-0200	25[111]
		2.00mm ²	0.055[1.40]	0.094[2.39]			
		1.50mm ²	0.053[1.35]	0.094[2.39]			
		16 AWG	0.050[1.27]	0.094[2.39]			
		1.00mm ²	0.050[1.27]	0.094[2.39]			
AT60-16-06xx AT62-16-06xx INSULATION RANGE 0.055-0.100[1.40-2.54]	16	18 AWG	0.049[1.24]	0.094[2.39]	AT17-003-0200	AT17-103-0200	25[111]
		0.75mm ²	0.048[1.22]	0.094[2.39]			
		16 AWG	0.050[1.27]	0.079[2.01]			
		1.00mm ²	0.050[1.27]	0.079[2.01]			
		20 AWG	0.048[1.22]	0.079[2.01]			
		0.50mm ²	0.045[1.14]	0.079[2.01]			15[67]

REVISIONS						
REV	ZONE	ECO	DESCRIPTION	DATE	BY	APPR
A1	-	-	RELEASE NUMBER 016571	6/12/09	B.D.B.	M.R.F.



CROSS REFERENCE

SINE PART NUMBER	DEUTSCH PART NUMBER
MFX-3950	DCT16-02-00
AT17-002-0200	1017-002-0200
AT17-003-0200	1017-003-0200
AT17-101-0200	1017-101-0200
AT17-103-0200	1017-103-0200
AT17-210-0200	1017-210-0200
AT17-211-0200	1017-211-0200
AT17-213-0200	1017-213-0200
AT17-214-0200	1017-214-0200
AT17-217-0200	1017-217-0200
AT17-218-0200	1017-218-0200
AT17-310-0200	1017-310-0200
AT17-311-0200	1017-311-0200
AT17-313-0200	1017-313-0200
AT17-304-0200	1017-304-0200
AT17-317-0200	1017-317-0200
AT17-318-0200	1017-318-0200



INSULATION DIAMETER RANGE	INSULATION PUNCH NUMBER	INSULATION ANVIL NUMBER
0.120-0.150	[3.05-3.81]	AT17-210-0200
0.105-0.125	[2.67-3.18]	AT17-211-0200
0.085-0.111	[2.16-2.82]	AT17-213-0200
0.075-0.105	[1.91-2.67]	AT17-214-0200
0.063-0.094	[1.62-2.39]	AT17-217-0200
0.050-0.075	[1.27-1.91]	AT17-218-0200

NOTES: UNLESS OTHERWISE SPECIFIED

- ALL DIMENSIONS ARE IN INCHES[mm].
- FORCES ARE IN POUNDS[LBS] AND NEWTONS[N].
- "XX"= PLATING SUFFIX. SEE INDIVIDUAL CONTACT DRAWING.
- WIRE STRIP LENGTH: 0.175±0.025[4.45±0.64]. BROKEN OR MISSING CONDUCTOR STRANDS ARE NOT ACCEPTABLE.
- USE A BLADE MICROMETER (0.100[2.54] MIN SPINDLE AND 0.060/0.010[1.50/0.040] ANVIL) TO MEASURE THE CONDUCTOR CRIMP. SEE SECTION A-A
- CRIMP TENSILE STRENGTH IS DETERMINED AT A PULL RATE SPEED OF 1.00 INCH[25.4] PER MINUTE. INSULATION WINGS ARE REMOVED FOR TEST. ACTUAL CRIMP TENSILE STRENGTH DEPENDS ON WIRE/CONDUCTOR SIZE. VALUES ON THIS SPECIFICATION ARE FOR REFERENCE ONLY.
- INSULATION DIAMETER RANGE IS DETERMINED BY CONNECTOR AND IT'S WIRE SEAL SIZE. SEE CONNECTOR DRAWING FOR INSULATION RANGE.
- INSULATION CRIMP DIAMETER SHOULD BE THE EQUAL OR LESS THAN THE DIAMETER OF THE WIRE INSULATION (HARD OR TEFLON INSULATION MAY BE AN EXCEPTION). INSULATION CRIMP SHALL NOT AFFECT REMOVAL TOOL PERFORMANCE AND SHALL NOT DAMAGE CONNECTOR GROMMET SEAL.
- CONDUCTOR TYPE ARE PER SAEJ1128(AWG) AND ISO 6722(METRIC)
- FOR CONTACT MATERIAL AND PERFORMANCE DATA, SEE DRAWING S2-15217.
- REFER TO S2-15223 AND S2-15224 AND CROSS REFERENCE CHARTS FOR CRIMP TOOL DATA.

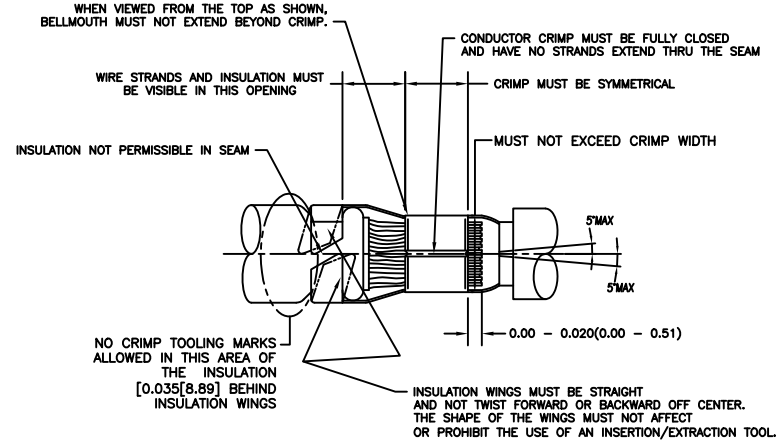
ALL REFERENCES TO DEUTSCH PRODUCTS OR SPECIFICATIONS ARE FOR COMPARISON PURPOSES ONLY, AND REFER TO DEUTSCH INDUSTRIAL PRODUCTS.

QUANTITY	PART NUMBER	DESCRIPTION	ITEM
MATERIALS LIST			
UNLESS OTHERWISE SPECIFIED		SIGNATURES	DATE
1) All dimensions are in inches.		DRAWN: POTER	4/7/09
2) Tolerances are as follows:		CHECKED: FORCE	6/8/09
1 PL DEC ±0.05 Fractions ±1/64		ENGINEER: BERNUM	
2 PL DEC ±0.01 Angles ±1°		APPROVAL: BERNUM	6/8/09
3 PL DEC ±0.005		CUSTOMER:	
3) Fabrication Standards Per: SS-20020			
4) Note Reference =			
MATERIAL SPECIFICATIONS:		SINE Systems Corporation A Subsidiary of Amphenol Corporation 44724 Morley Drive Clinton Township, MI 48036 CRIMP DATA, STAMPED CONTACTS FOR CRIMPER MFX-3950	
N/A			
PROCESS SPECIFICATIONS:		THE USE OF THIS DOCUMENT IS UNLIMITED. DESIGN FEATURES, SPECIFICATIONS, AND PERFORMANCE DATA SHOWN HEREON ARE THE PROPERTY OF AMPHENOL CORP. ALL DIMENSIONS ARE SUBJECT TO NORMAL MANUFACTURING VARIATIONS. DOCUMENTS REFERENCED HEREON MAY CONTAIN LIMITED RIGHTS DATA.	SIZE: FSCM NO. DWG NO. REVISION C 1GK44 S2-15222 A1
NEXT ASSY:		SCALE: NONE	SHEET 1 OF 1

TITLE: CRIMP DATA, STAMPED CONTACTS DWG NO: S2-15222 REV: A1 SH: 1 OF: 1

STAMPED CONTACT PART NUMBER 1060=PIN 1062=SOCKET	SIZE	CONDUCTOR WIRE SIZE	CRIMP HEIGHT +0.001/-0.002 INCH [+0.03/-0.05 mm]	CRIMP WIDTH ±0.003 INCH [±0.08 mm]	CONDUCTOR PUNCH NUMBER	CONDUCTOR ANVIL NUMBER	CRIMP TENSILE REFERENCE LBS[N]
AT60-14-01xx AT62-14-01xx INSULATION RANGE 0.095-0.150[2.41-3.81]	16	14 AWG	0.055[1.40]	0.094[2.39]	AT17-083-0200	AT17-183-0200	25[111]
		2.00mm ²	0.055[1.40]	0.094[2.39]			
		1.50mm ²	0.053[1.35]	0.094[2.39]			
		16 AWG	0.050[1.27]	0.094[2.39]			
		1.00mm ²	0.050[1.27]	0.094[2.39]			
		18 AWG	0.049[1.24]	0.094[2.39]			
AT60-16-01xx AT62-16-01xx INSULATION RANGE 0.075-0.140[1.91-3.56]	16	14 AWG	0.055[1.40]	0.094[2.39]	AT17-083-0200	AT17-183-0200	25[111]
		2.00mm ²	0.055[1.40]	0.094[2.39]			
		1.50mm ²	0.053[1.35]	0.094[2.39]			
		16 AWG	0.050[1.27]	0.094[2.39]			
		1.00mm ²	0.050[1.27]	0.094[2.39]			
		18 AWG	0.049[1.24]	0.094[2.39]			
AT60-16-06xx AT62-16-06xx INSULATION RANGE 0.055-0.100[1.40-2.54]	16	16 AWG	0.050[1.27]	0.079[2.01]	AT17-082-0200	AT17-182-0200	25[111]
		1.00mm ²	0.050[1.27]	0.079[2.01]			
		18 AWG	0.049[1.24]	0.079[2.01]			
		0.75mm ²	0.048[1.22]	0.079[2.01]			
		20 AWG	0.048[1.22]	0.079[2.01]			
		0.50mm ²	0.045[1.14]	0.079[2.01]			

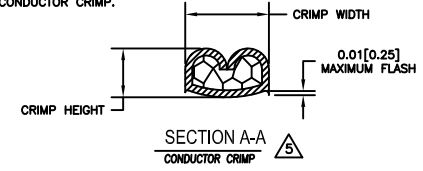
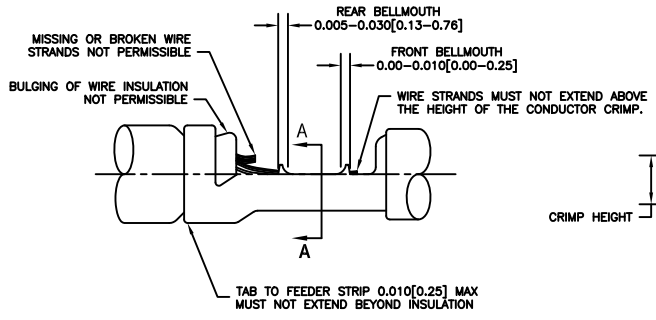
REVISIONS						
REV	ZONE	ECO	DESCRIPTION	DATE	BY	APPR
A1	-	-	RELEASE NUMBER 016571	6/12/09	B.D.B.	M.R.F.



CROSS REFERENCE

SINE PART NUMBER	DEUTSCH PART NUMBER
MFx-3953	DCT1620-02-00
AT17-083-0200	1017-083-0200
AT17-082-0200	1017-082-0200
AT17-183-0200	1017-183-0200
AT17-182-0200	1017-182-0200
AT17-225-0200	1017-225-0200
AT17-226-0200	1017-226-0200
AT17-227-0200	1017-227-0200
AT17-228-0200	1017-228-0200
AT17-229-0200	1017-229-0200
AT17-230-0200	1017-230-0200
AT17-325-0200	1017-325-0200
AT17-326-0200	1017-326-0200
AT17-327-0200	1017-327-0200
AT17-328-0200	1017-328-0200
AT17-329-0200	1017-329-0200
AT17-330-0200	1017-330-0200

INSULATION DIAMETER RANGE	INSULATION PUNCH NUMBER	INSULATION ANVIL NUMBER
0.120-0.150	[3.05-3.81]	AT17-225-0200
0.105-0.125	[2.67-3.18]	AT17-226-0200
0.085-0.111	[2.16-2.82]	AT17-227-0200
0.075-0.105	[1.91-2.67]	AT17-228-0200
0.063-0.094	[1.62-2.39]	AT17-229-0200
0.050-0.075	[1.27-1.91]	AT17-230-0200



NOTES: UNLESS OTHERWISE SPECIFIED

- ALL DIMENSIONS ARE IN INCHES[mm].
- FORCES ARE IN POUNDS[LBS] AND NEWTONS[N].
- "XX"= PLATING SUFFIX. SEE INDIVIDUAL CONTACT DRAWING.
- WIRE STRIP LENGTH: 0.175±0.025[4.45±0.64]. BROKEN OR MISSING CONDUCTOR STRANDS ARE NOT ACCEPTABLE.
- USE A BLADE MICROMETER (0.100[2.54] MIN SPINDLE AND 0.060/0.010[1.50/0.040] ANVIL) TO MEASURE THE CONDUCTOR CRIMP. SEE SECTION A-A
- CRIMP TENSILE STRENGTH IS DETERMINED AT A PULL RATE SPEED OF 1.00 INCH[25.4] PER MINUTE. INSULATION WINGS ARE REMOVED FOR TEST. ACTUAL CRIMP TENSILE STRENGTH DEPENDS ON WIRE/CONDUCTOR SIZE. VALUES ON THIS SPECIFICATION ARE FOR REFERENCE ONLY.
- INSULATION DIAMETER RANGE IS DETERMINED BY CONNECTOR AND ITS WIRE SEAL SIZE. SEE CONNECTOR DRAWING FOR INSULATION RANGE.
- INSULATION CRIMP DIAMETER SHOULD BE THE EQUAL OR LESS THAN THE DIAMETER OF THE WIRE INSULATION (HARD OR TEFLON INSULATION MAY BE AN EXCEPTION). INSULATION CRIMP SHALL NOT AFFECT REMOVAL TOOL PERFORMANCE AND SHALL NOT DAMAGE CONNECTOR GROMMET SEAL.
- CONDUCTOR TYPE ARE PER SAEJ1128(AWG) AND ISO 6722(METRIC)
- FOR CONTACT MATERIAL AND PERFORMANCE DATA, SEE DRAWING S2-15217.
- REFER TO S2-15223 AND S2-15224 AND CROSS REFERENCE CHARTS FOR CRIMP TOOL DATA.

ALL REFERENCES TO DEUTSCH PRODUCTS OR SPECIFICATIONS ARE FOR COMPARISON PURPOSES ONLY, AND REFER TO DEUTSCH INDUSTRIAL PRODUCTS.

QUANTITY	PART NUMBER	DESCRIPTION	ITEM
MATERIALS LIST			
UNLESS OTHERWISE SPECIFIED		SIGNATURES	DATE
1) All dimensions are in inches.		DRAWN: POTER	4/7/09
2) Tolerances are as follows:		CHECKED: FORCE	6/8/09
1 PL DEC ±0.05 Fractions ±1/64		ENGINEER: BERNUM	
2 PL DEC ±0.01 Angles ±1°		APPROVAL: BERNUM	6/8/09
3 PL DEC ±0.005			
3) Fabrication Standards Per: SS-20020			
4) Note Reference =			
MATERIAL SPECIFICATIONS:		CUSTOMER:	
N/A			
PROCESS SPECIFICATIONS:		THE USE OF THIS DOCUMENT IS UNLIMITED. DESIGN FEATURES, SPECIFICATIONS, AND PERFORMANCE DATA SHOWN HEREON ARE THE PROPERTY OF AMPHENOL CORP. ALL DIMENSIONS ARE SUBJECT TO NORMAL MANUFACTURING VARIATIONS. DOCUMENTS REFERENCED HEREON MAY CONTAIN LIMITED RIGHTS DATA.	
NEXT ASSY:		SIZE: C	REVISION: A1
		SCALE: NONE	
		FIG. NO. 1GK44	
		DWG NO. S2-15221	
		SHEET 1 OF 1	

TITLE: CRIMP DATA, STAMPED CONTACTS DWG NO: S2-15221 REV: A1 SH: 1 OF 1

REVISIONS					
REV	ZONE	ECO	DESCRIPTION	DATE	BY APPR
A1	-	-	RELEASE NUMBER 016571	6/12/09	B.D.B. M.R.F.

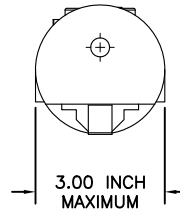
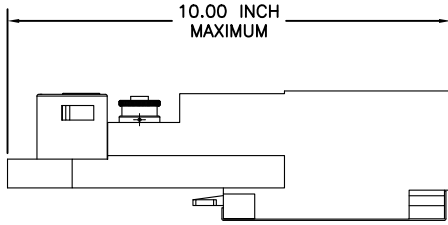
CONTACT LOCATOR "TURRET"
THREE POSITION FOR SIZE
12, 16 & 20 MALE AND
FEMALE CONTACTS

SELECTOR FOR
CRIMP SETTING

THREADED HOLE FOR
ATTACHMENT OF
BENCH MOUNT FIXTURE

"TURRET"
RELEASE LATCH

THREADED OPENING
FOR COMPRESSED
AIR FITTING



NOTES:

1. THE CA-5E12 IS A COMPRESSED AIR OPERATED HAND CRIMPER FOR ELECTRICAL CONTACTS. IT IS ADJUSTABLE TO 3 CONTACT SIZES (12, 16 & 20) AND 8 INDENTER CRIMP POSITIONS FOR DIFFERENT WIRE SIZES (12AWG THRU 26 AWG).
2. 80-120 PSI COMPRESSED AIR.
3. WEIGHT: 3.1 LBS
4. SELECTING CONTACT SIZE: PRESS THE RELEASE LATCH ON SIDE OF THE CONTACT LOCATOR "TURRET". ROTATE TO THE DESIRED CONTACT SIZE. THE TOP OF THE "TURRET" IS EMBOSSED WITH THE CONTACT SIZES.
5. SELECTING WIRE SIZE: GRASP THE SELECTOR AND ROTATE TO THE DESIRED NUMBER.

OPENING TO INSERT
AND CRIMP CONTACT

VALVE TO
CYCLE CRIMPER

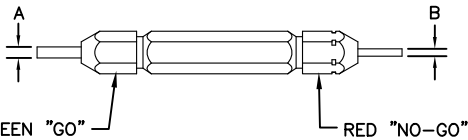
SELECTOR NUMBER

CONTACT SIZE	LOCATOR "TURRET" POSITION COLOR	SELECTOR NUMBER							
		26 AWG WIRE	24 AWG WIRE	22 AWG WIRE	20 AWG WIRE	18 AWG WIRE	16 AWG WIRE	14 AWG WIRE	12 AWG WIRE
20-20	RED	1	2	3	4				
16-22	BLUE	4	5	6					
16-20	BLUE	1	2	3	4				
16-16	BLUE				4	5	6		
12-16	YELLOW				4	5	6		
12-12	YELLOW							7	8

GAGE PART NO.	A GO DIA.	B NO-GO DIA.	SELECTOR NUMBER
G125	.0390	.0440	4

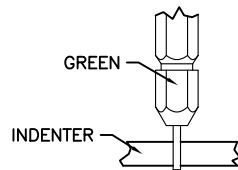
GAGING INSTRUCTIONS

CAUTION!
DO NOT CRIMP GAGE!

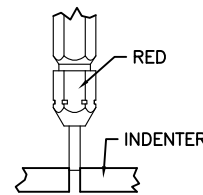


"GO" GAGING: OPERATE TOOL TO FULLY CLOSED POSITION. INSERT "GO" GAGE END AS SHOWN. GAGE MUST PASS FREELY BETWEEN INDENTER TIPS.

"NO-GO" GAGING: OPERATE TOOL TO FULLY CLOSED POSITION. INSERT "NO-GO" GAGE END AS SHOWN. THE "NO-GO" MAY PARTIALLY ENTER THE INDENTER OPENING, BUT MUST NOT PASS COMPLETELY THROUGH THE OPENING.



SELECTOR NUMBER	A ±.0001 GO DIA.	B ±.0001 NO-GO DIA.
1	.0280	.0330
2	.0320	.0370
3	.0360	.0410
4	.0390	.0440
5	.0450	.0500
6	.0520	.0570
7	.0590	.0640
8	.0680	.0730



QUANTITY	PART NUMBER	DESCRIPTION	ITEM
MATERIALS LIST			
UNLESS OTHERWISE SPECIFIED		SIGNATURES	DATE
1) All dimensions are in inches.		BERNUM	6/2/09
2) Tolerances are as follows:		CHECKED: FORCE	6/3/09
1 PL DEC ±0.05 Fractions ±1/64		ENGINEER: BERNUM	
2 PL DEC ±0.01 Angles ±1°		APPROVAL: BERNUM	6/3/09
3 PL DEC ±0.005		CUSTOMER:	
4) Note Reference =			
MATERIAL SPECIFICATIONS:			
N/A			
PROCESS SPECIFICATIONS:		THE USE OF THIS DOCUMENT IS UNLIMITED. DESIGN FEATURES, SPECIFICATIONS, AND PERFORMANCE DATA SHOWN HEREON ARE THE PROPERTY OF AMPHENOL CORP. ALL DIMENSIONS ARE SUBJECT TO NORMAL MANUFACTURING VARIATIONS. DOCUMENTS REFERENCED HEREON MAY CONTAIN LIMITED RIGHTS DATA.	REVISION
NEXT ASSY:		SCALE: NONE	A1
		SIZE: 1GK44	
		FIG NO: S2-15220	
		SHEET 1 OF 1	

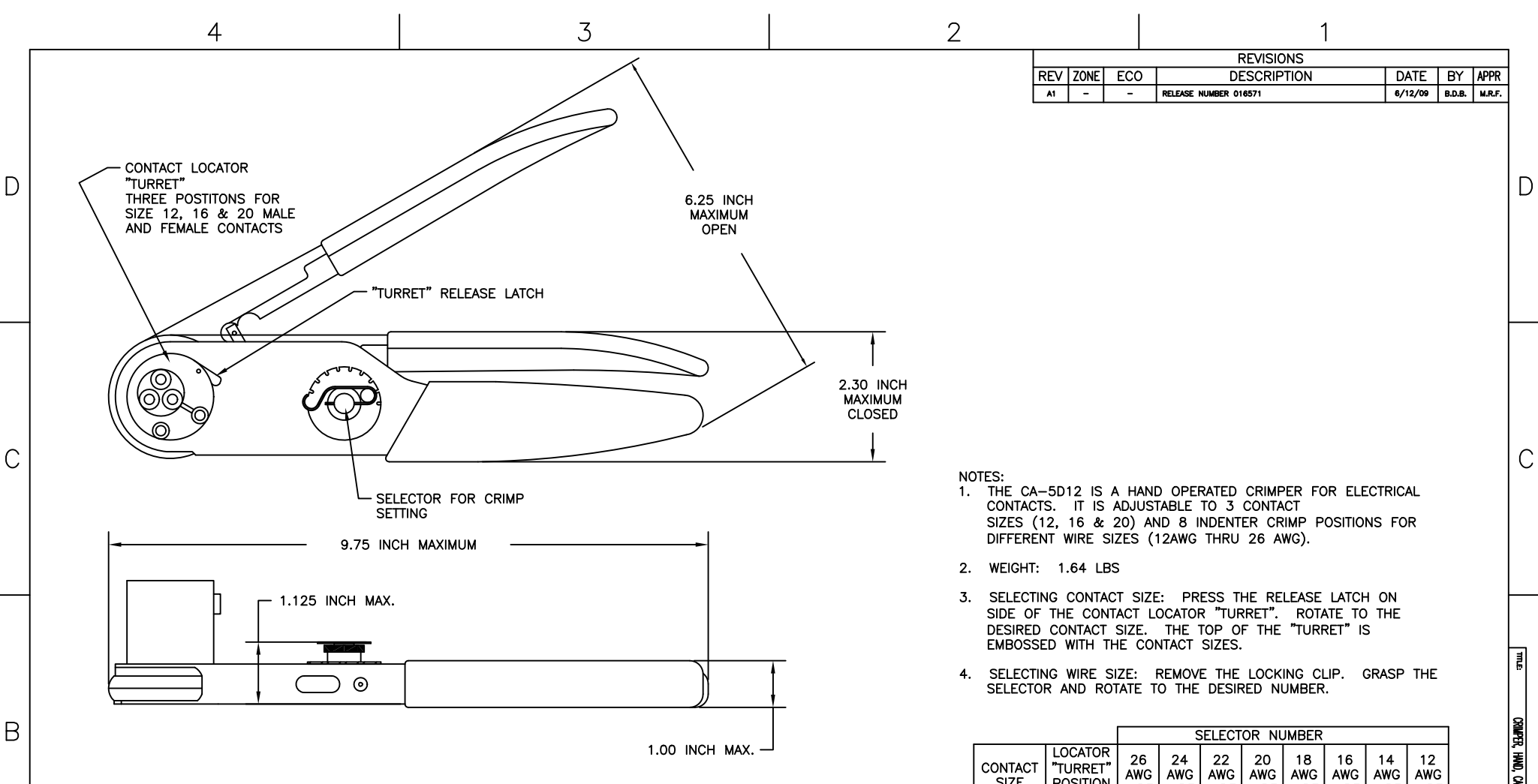
SINE Systems Corporation

A Subsidiary of Amphenol Corporation
44724 Morley Drive
Clinton Township, MI 48036

INSTRUCTIONS FOR CA-5E12
CRIMPER, PNEUMATIC

DRAWN BY: S2-15220
DATE: 6/2/09
REV: A1
SHEET: 1 OF 1

REVISIONS					
REV	ZONE	ECO	DESCRIPTION	DATE	BY APPR
A1	-	-	RELEASE NUMBER 016571	6/12/09	B.D.B. M.R.F.



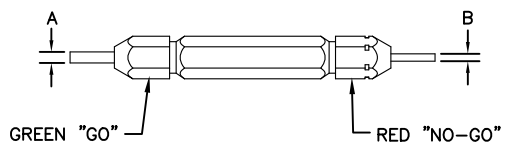
- NOTES:
1. THE CA-5D12 IS A HAND OPERATED CRIMPER FOR ELECTRICAL CONTACTS. IT IS ADJUSTABLE TO 3 CONTACT SIZES (12, 16 & 20) AND 8 INDENTER CRIMP POSITIONS FOR DIFFERENT WIRE SIZES (12AWG THRU 26 AWG).
 2. WEIGHT: 1.64 LBS
 3. SELECTING CONTACT SIZE: PRESS THE RELEASE LATCH ON SIDE OF THE CONTACT LOCATOR "TURRET". ROTATE TO THE DESIRED CONTACT SIZE. THE TOP OF THE "TURRET" IS EMBOSSED WITH THE CONTACT SIZES.
 4. SELECTING WIRE SIZE: REMOVE THE LOCKING CLIP. GRASP THE SELECTOR AND ROTATE TO THE DESIRED NUMBER.

CONTACT SIZE	LOCATOR "TURRET" POSITION COLOR	SELECTOR NUMBER							
		26 AWG WIRE	24 AWG WIRE	22 AWG WIRE	20 AWG WIRE	18 AWG WIRE	16 AWG WIRE	14 AWG WIRE	12 AWG WIRE
20-20	RED	1	2	3	4				
16-22	BLUE	4	5	6					
16-20	BLUE	1	2	3	4				
16-16	BLUE				4	5	6		
12-16	YELLOW				4	5	6		
12-12	YELLOW							7	8

GAGE PART NO.	A GO DIA.	B NO-GO DIA.	SELECTOR NUMBER
G125	.0390	.0440	4

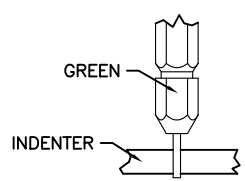
GAGING INSTRUCTIONS

CAUTION!
DO NOT CRIMP GAGE!

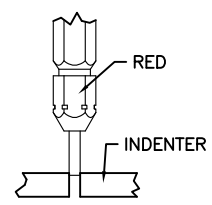


"GO" GAGING: OPERATE TOOL TO FULLY CLOSED POSITION. INSERT "GO" GAGE END AS SHOWN. GAGE MUST PASS FREELY BETWEEN INDENTER TIPS.

"NO-GO" GAGING: OPERATE TOOL TO FULLY CLOSED POSITION. INSERT "NO-GO" GAGE END AS SHOWN. THE "NO-GO" MAY PARTIALLY ENTER THE INDENTER OPENING, BUT MUST NOT PASS COMPLETELY THROUGH THE OPENING.



SELECTOR NUMBER	A ±.0001 GO DIA.	B ±.0001 NO-GO DIA.
1	.0280	.0330
2	.0320	.0370
3	.0360	.0410
4	.0390	.0440
5	.0450	.0500
6	.0520	.0570
7	.0590	.0640
8	.0680	.0730



QUANTITY	PART NUMBER	DESCRIPTION	ITEM
MATERIALS LIST			
UNLESS OTHERWISE SPECIFIED		SIGNATURES	DATE
1) All dimensions are in inches.		BERNUM	6/3/09
2) Tolerances are as follows:		CHECKED: FORCE	6/3/09
1 PL DEC ±0.05 Fractions ±1/64		ENGINEER: BERNUM	
2 PL DEC ±0.01 Angles ±1°		APPROVAL: BERNUM	6/3/09
3 PL DEC ±0.005		CUSTOMER:	
4) Note Reference =			
MATERIAL SPECIFICATIONS:		N/A	
PROCESS SPECIFICATIONS:		THE USE OF THIS DOCUMENT IS UNLIMITED. DESIGN FEATURES, SPECIFICATIONS, AND PERFORMANCE DATA SHOWN HEREON ARE THE PROPERTY OF AMPHENOL CORP. ALL DIMENSIONS ARE SUBJECT TO NORMAL MANUFACTURING VARIATIONS. DOCUMENTS REFERENCED HEREON MAY CONTAIN LIMITED RIGHTS DATA.	
NEXT ASSY:		SCALE: NONE	REVISION: A1

SINE Systems Corporation
A Subsidiary of Amphenol Corporation
44724 Morley Drive
Clinton Township, MI 48036

INSTRUCTIONS FOR CA-5D12 CRIMPER, HAND, MACHINED CONTACTS

SIZE: 1GK44 | FSCM NO: S2-15219 | DWG NO: S2-15219 | SHEET 1 OF 1

TITLE: CRIMPER, HAND, CH-5012
 DWG NO: S2-15219
 REV: A1 SH: 1 OF: 1

4

3

2

1

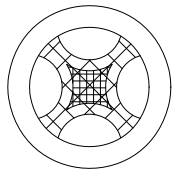
REVISIONS					
REV	ZONE	ECO	DESCRIPTION	DATE	BY APPR
A1	-	-	RELEASE NUMBER 016571	6/12/09	B.D.B. M.R.F.

CONTACT P/N	SIZE TYPE	WIRE SIZE	REF. ONLY TENSILE LBS[N]
AT60-202-16XX	16PIN	1.5mm ² 16AWG	35[156]
AT62-201-16XX	16SOC	1.0mm ² 18AWG	25[111]
		0.75mm ² 20AWG	20[89]
		0.50mm ²	

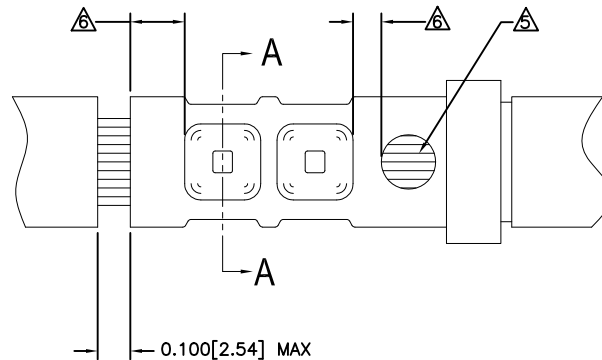
RECOMMENDED STRIP LENGTH	
CONTACT SIZE	STRIP LENGTH INCH[MM]
16	0.250-0.312[6.35-7.92]

CRIMP TOOLING						
CONTACT SIZE	CRIMP TOOL PART NUMBER	CONTACT LOCATOR "TURRET" POSITION	WIRE SELECTOR NUMBER	GO GAGE INCH[MM]	"NOGO" GAGE INCH[MM]	REMARKS
16	CA-5D12 CA-5E12	BLUE	6	0.052[1.32]	0.057[1.45]	
16	CA-5D12 CA-5E12	BLUE	4	0.039[.991]	0.044[1.12]	SIZE 16 WITH 20 AWG WIRE

- NOTES: UNLESS OTHERWISE SPECIFIED
- ⚠ MINIMUM +/-0.0005 [0.013] TOLERANCE STEEL GAGE PINS. DO NOT CRIMP GAGE PINS. CLOSE DIE, THEN USE GAGE PINS.
 - ⚠ WHEN XX=31, CONTACT PLATING IS GOLD
 - ⚠ WHEN XX=141, CONTACT PLATING IS NICKEL
 - ⚠ PULL RATE OF 1.0 IN [25.4] PER MINUTE. ACTUAL STRENGTH DEPENDS ON WIRE SIZE.
 - 4. FOR CONTACT PERFORMANCE, MATERIAL SPECIFICATIONS AND APPLICATION DETAILS, SEE DRAWING S2-15217.
 - ⚠ CONDUCTOR STRANDS MUST BE VISIBLE THRU THE INSPECTION HOLE PRIOR TO CRIMP.
 - ⚠ PROPER CRIMP TOOLING WILL PRODUCE A CRIMP CENTERED BETWEEN THE INSPECTION HOLE AND CRIMP BARREL END.
 - ⚠ WIRE SIZES PER SAE J1128 AND J1560 [DIN 72551-6]
 - 8. REFERENCE INSTRUCTION MANUALS S2-15219 AND S2-15220 FOR CA-5D12 AND CA-5E12 HAND AND PNEUMATIC CRIMPER.
 - ⚠ THE CRIMP HEIGHT DIMENSION AFTER CRIMPING MAY VARY FROM THE VALUES LISTED FOR THE "GO-NOGO" PINS.



SECTION A-A
CRIMP CROSS-SECTION



QUANTITY	PART NUMBER	DESCRIPTION	ITEM
MATERIALS LIST			
UNLESS OTHERWISE SPECIFIED		SIGNATURES DATE	
1) All dimensions are in inches.		DRAWN: BERNUM	6/3/09
2) Tolerances are as follows:		CHECKED: FORCE	6/3/09
1 PL DEC ±0.05 Fractions ±1/64		ENGINEER: BERNUM	
2 PL DEC ±0.01 Angles ±1°		APPROVAL: BERNUM	6/3/09
3 PL DEC ±0.005		CUSTOMER:	
3) Fabrication Standards Per: SS-20020		SINE Systems Corporation	
4) Note Reference = ⚠		A Subsidiary of Amphenol Corporation	
MATERIAL SPECIFICATIONS:		44724 Morley Drive	
N/A		Clinton Township, MI 48036	
PROCESS SPECIFICATIONS:		CRIMP INFORMATION	
N/A		SOLID MACHINED CONTACTS	
NEXT ASSY:		SCALE: NONE	REVISION: A1
		SIZE: C	FIGM NO./DWG NO.: S2-15218
		SCALE: NONE	SHEET 1 OF 1

4

3

2

1

TITLE: CRIMP INFORMATION SOLID CONTACTS DWG NO: S2-15218 REV: A1 SHEET 1 OF 1

4

3

2

1

REVISIONS					
REV	ZONE	ECO	DESCRIPTION	DATE	BY APPR
A1	-	-	RELEASE NUMBER 016571	6/12/09	B.D.B. M.R.F.

SOLID CONTACT SIZE	SOLID CONTACT PART NUMBERS		WIRE SIZE AWG(mm ²)	RECOMMENDED STRIP LENGTH INCH [mm]	MIN CONTACT RETENTION LBS [N]	REF CRIMP TENSILE LBS [N]	MAX RATED AMPS@125°C CONTINUOUS
	PIN	SOCKET					
16	AT60-202-16**	AT62-201-16**	16-20 [1.5-0.5]	0.25-0.31 [6.35-7.92]	25 [111]	35-20 [156-89]	13

S&F CONTACT SIZE	STAMPED CONTACT PART NUMBERS		WIRE SIZE AWG [mm ²]	WIRE INSULATION O.D. RANGE	RECOMMENDED STRIP LENGTH INCH [mm]	MIN CONTACT RETENTION LBS [N]	REF CRIMP TENSILE LBS [N]	MAX RATED AMPS@125°C CONTINUOUS
	PIN	SOCKET						
16	AT60-14-01**	AT62-14-01**	14-16 [2.0-1.0]	.100 - .150 [2.54 - 3.81]	0.150-0.200 [3.81-5.08]	25 [111]	25 [111]	13
16	AT60-16-01**	AT62-16-01**	16-18 [1.0-0.75]	.075 - .100 [1.90 - 2.54]	0.150-0.200 [3.81-5.08]	25 [111]	25 [111]	13
16	AT60-16-06**	AT62-16-06**	18-20 [0.75-0.50]	.055 - .095 [1.40 - 2.41]	0.150-0.200 [3.81-5.08]	25 [111]	25-15 [111-67]	13

CONTACT RESISTANCE STRENGTH (LESS DROP THROUGH WIRE)			
WIRE AWG	TEST CURRENT	MILLIVOLT DROP SOLID	MILLIVOLT DROP S&F
14	18	60	100
16	13	60	100
18	10	60	100
20	7.5	60	100

MATERIAL SPECIFICATION AND PLATING ** CODES
PIN: COPPER ALLOY SOCKET: COPPER ALLOY WITH STAINLESS STEEL SLEEVE
SOLID MACHINED CONTACT PLATING OPTIONS:
31= GOLD* 141= NICKEL
STAMPED CONTACT PLATING OPTIONS:
22= NICKEL 44= GOLD* 88= SELECTIVE GOLD*
GOLD*= PLATING IS AVAILABLE (RECOMMENDED) FOR ONLY (<5V) CIRCUIT APPLICATIONS
MATERIALS AND PLATINGS ARE RoHS COMPLIANT

NOTES: UNLESS OTHERWISE SPECIFIED

- 1. ALL DIMENSIONS ARE INCHES[MM].
- 2. ALL FORCES ARE IN "LBS"(POUNDS) AND "[N]" (NEWTONS).
- CONTACT RETENTION TEST PULL RATE SHALL BE 1.0 INCH[25.4] PER MINUTE MAXIMUM. WIRE SIZE WILL AFFECT THE TRUE STRENGTH OF THE CRIMP.
- WIRE SIZES AND INSULATION RANGES ARE FOR REFERENCE ONLY. THE ACTUAL INSULATION RANGE DEPENDS ON CONNECTOR GROMMET SEALING SIZE.

SEE SPECIFICATIONS LISTED BELOW FOR INDIVIDUAL CRIMP INFORMATION:

"SOLID" CONTACTS	SIZE	"STAMPED" CONTACTS	SIZE
S2-15218	16	S2-15222	16
		S2-15221	16/20

- MAXIMUM RATED CURRENT IN CHART DEPENDS ON CONTACT SIZE. ACTUAL RATED CURRENT DEPENDS ON WIRE SIZE.
- CONTACT FACTORY FOR ALL AVAILABLE PLATING ON SPECIFIC CONTACTS.
- AMPHENOL SINE PERFORMANCE SPECIFICATIONS REQUIRE THE USE OF AMPHENOL SINE APPROVED TOOLING.

QUANTITY	PART NUMBER	DESCRIPTION	ITEM
MATERIALS LIST			
UNLESS OTHERWISE SPECIFIED		SIGNATURES DATE	
1) All dimensions are in inches.		DRAWN: POTER	4/5/09
2) Tolerances are as follows:		CHECKED: FORCE	6/3/09
1 PL DEC ±0.05 Fractions ±1/64		ENGINEER: BERNUM	
2 PL DEC ±0.01 Angles ±1°		APPROVAL: BERNUM	6/3/09
3 PL DEC ±0.005		CUSTOMER:	
4) Note Reference =		SINE Systems Corporation	
MATERIAL SPECIFICATIONS:		A Subsidiary of Amphenol Corporation 44724 Morley Drive Clinton Township, MI 48036	
N/A		GENERAL DATA, CONTACTS STAMPED AND FORMED / MACHINED	
PROCESS SPECIFICATIONS:		THE USE OF THIS DOCUMENT IS UNLIMITED. DESIGN FEATURES, SPECIFICATIONS, AND PERFORMANCE DATA SHOWN HEREON ARE THE PROPERTY OF AMPHENOL CORP. ALL DIMENSIONS ARE SUBJECT TO NORMAL MANUFACTURING VARIATIONS. DOCUMENTS REFERENCED HEREON MAY CONTAIN LIMITED RIGHTS DATA.	
NEXT ASSY:		SCALE: NONE	SIZE: C
		SCALE: NONE	SIZE: S2-15217
		SHEET 1	OF 1

4

3

2

1

ITEM CONTACT DATA GENERAL DWG NO: S2-15217 REV: A1 SH: 1 OF: 1