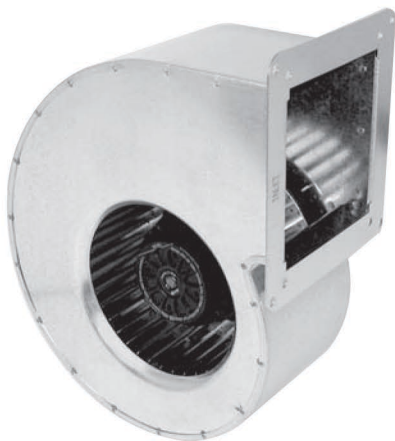


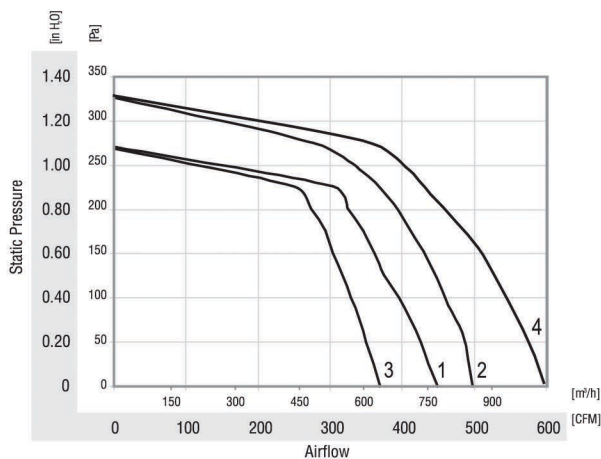
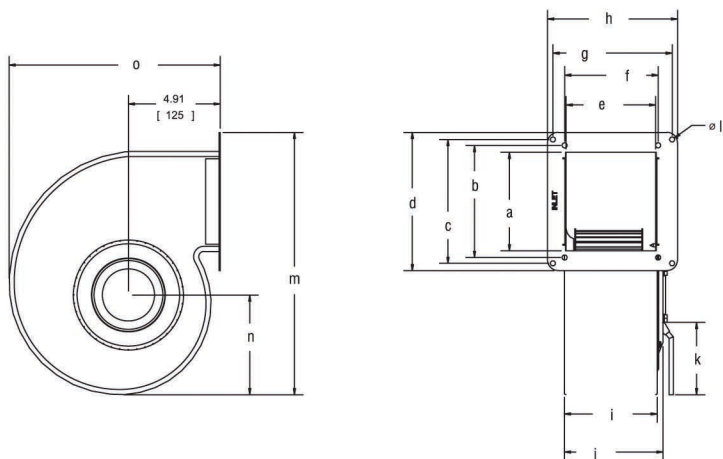
EE1G180 Series Centrifugal Blower



Ø 180mm

- AC single inlet, forward curved centrifugal blower.
- Direction of rotation is CW as seen from suction side.
- Housing and impeller of galvanised sheet-steel.
- Maintenance-free ball bearings.
- UL, CSA, VDE approvals on most models, please contact application engineering.

Part Number	Curve	CFM @ 0	VAC	Hertz	Power (W)	dba	Max Amb. Temp C	Bearing Type	Features	Capacitor (µF)
EE1G-115-180-04	1	450	115	50/60	125/180	64	50	Ball	Leads	16
EE1G-230-180-04	1	450	230	50/60	125/180	64	60	Ball	Leads	4
EE1G-230-180-06	2	500	230	50/60	125/180	64	60	Ball	Leads	4
EE1G-115-180-05	3	350	115	60	152	61	50	Ball	Leads	10
EE1G-115-180-06	4	604	115	60	251	-	50	Ball	Leads	20



	a	b	c	d	e	f	g	h	i	j	k	l	m	n	o
EE1G-xxx-180-04	4.38 [111]	5 [127]	5.13 [130]	6.38 [162]	4.50 [114]	4.63 [117]	5.63 [143]	6.69 [170]	4.96 [126]	5.26 [134]	18.13 [461]	.25 [6]	11.88 [302]	4.72 [120]	10.22 [260]
EE1G-xxx-180-06	5.27 [134]	6 [152]	6.63 [168]	7.4 [188]	4.79 [122]	5 [127]	6.38 [162]	6.96 [177]	4.96 [126]	5.27 [134]	18.51 [470]	.27 [7]	14.04 [357]	5.34 [136]	11.28 [287]
EE1G-xxx-180-05	4.25 [108]	5 [127]	- [140]	5.51 [140]	4 [101]	4.5 [114]	- [140]	5.51 [110]	4.33 [110]	4.40 [112]	17.72 [450]	.25 [6]	11.50 [292]	4.72 [120]	10.22 [260]

Mouser Electronics

Authorized Distributor

Click to View Pricing, Inventory, Delivery & Lifecycle Information:

[ebm-papst:](#)

[EE1G-115-180-04](#) [EE1G-115-180-05](#) [EE1G-230-180-04](#) [EE1G-230-180-05](#) [EE1G-230-180-06](#)