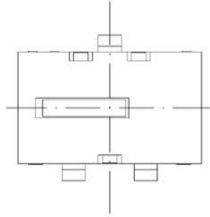


P. C. B LAYOUT
TOP VIEW



ELECTRIC PERFORMANCE:

Current Range: 0.1A, 30VDC

Operation Temperature: -10°C~+60°C

Storage Temperature: -20°C~+70°C

Contact Resistance: 500MΩ MAX.

Insulation Resistance: 100MΩ MIN. (Measurements shall be made following application of 100VDC potential across terminals)

Dielectric Withstanding Voltage: 100VAC

5	TERMINAL	1	BRASS δ=0.2	SILVER PLATING
4	BODY	1	PA66	BLACK
3	SPRING PLATE	1	BE-BRONZE δ=0.065	SILVER PLATING
2	COVER	1	POM	BLACK
1	BUTTON	1	POM	WHITE
NO.	PART	QTY	MATERIAL	COLOR

B	20190306	ELECTRIC PERFORMANCE ADDED		
Rev.	Date	Description		Remark
YUBRIGHT CO., LTD.		P/N	SF-6065.0	
Title		MICRO SWITCH		
Date	20151117	Rev.	B	RoHS
File	SWT009	Drw.	b37	App.
Unless otherwise specified, dimensions are in millimeters.				