

Vari-Tork

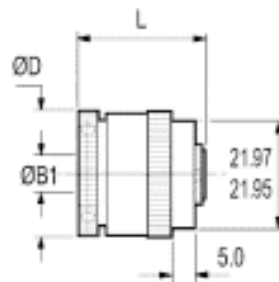
Basic 2 Plate, Adjustable Friction Clutches with Set Screw and Clamp fixings



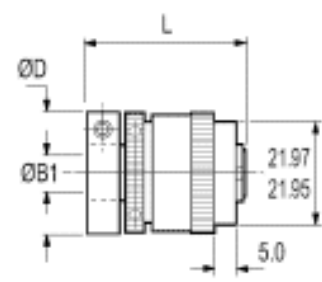
Ref. 271



Ref. 401



Ref. 271
(Set screw fixing)



Ref. 401
(Clamp fixing)

Dimensions and Order Codes

	Clutch Size	Clutch Ref	ØD	L	L1 (1)	L2	ØB1 max	Fasteners at B1 end		ØB2 max	Fasteners at B2 end		Moment of inertia (3)	Mass (3)	Max drag torque		
								Screw	Torque Wrench (2)		Screw	Torque Wrench (2)					
			mm	mm	mm	mm	mm	Nm	mm	mm	Nm	mm	kgm ² x 10 ⁻⁸	kg x 10 ⁻³	Nm		
more	25	271.25	25.8	26.4	thro'	-	8	M3	0.94	1.5	8	-	-	-	242	37	0.53
more	25	401.25	25.8	34.4	thro'	-	8	M3	2.43	2.5	8	-	-	-	317	47	0.53

Table Notes:

Max shaft penetration
Maximum recommended tightening torque.
Values apply with max bores.

Materials & Finishes

Housing, adjuster ring, adaptors:

Al. Alloy 2011T8 or T3. Alclacrom finish.

Hub:

Steel, heat treated.

Clutch plates:

Size 25 Steel, heat treated. Size 48 Brass.

Bearings:

Sintered bronze.

Fasteners:

Alloy Steel, black oiled.

Performance

	Clutch size	Clutch Ref.	Power dissipation at 20°C	Backlash (max)	Max surface temperature	Max speed continuous slip
			Watts	deg	deg C	rpm
more	25	271.25	7	2	80	1000
more	25	401.25	7	2	80	1000