

4

3

2

1

THIS DRAWING IS UNPUBLISHED.

RELEASED FOR PUBLICATION

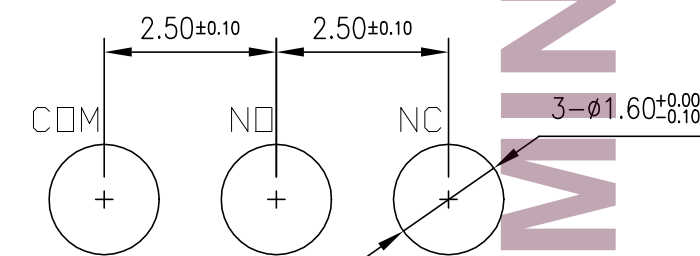
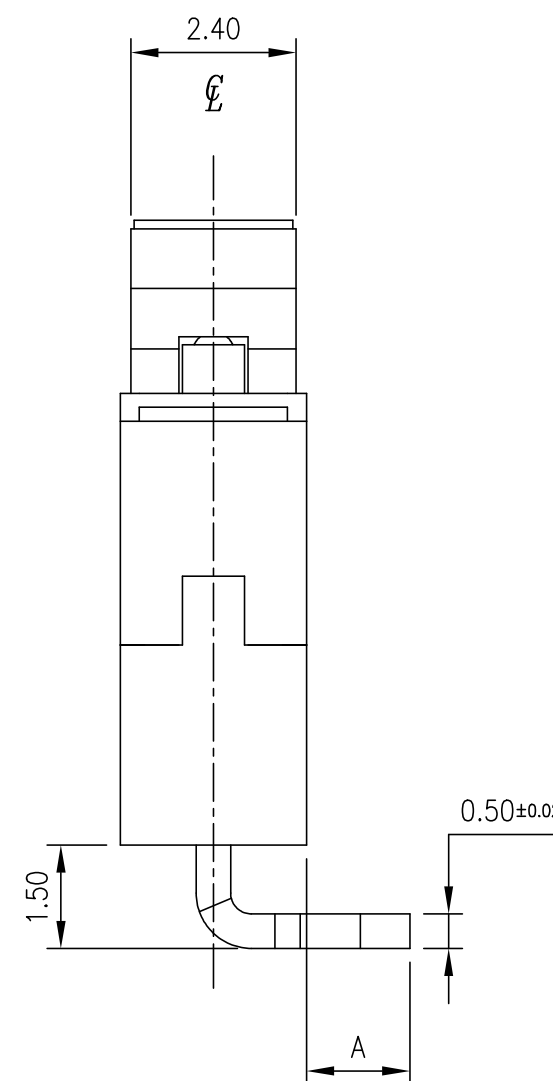
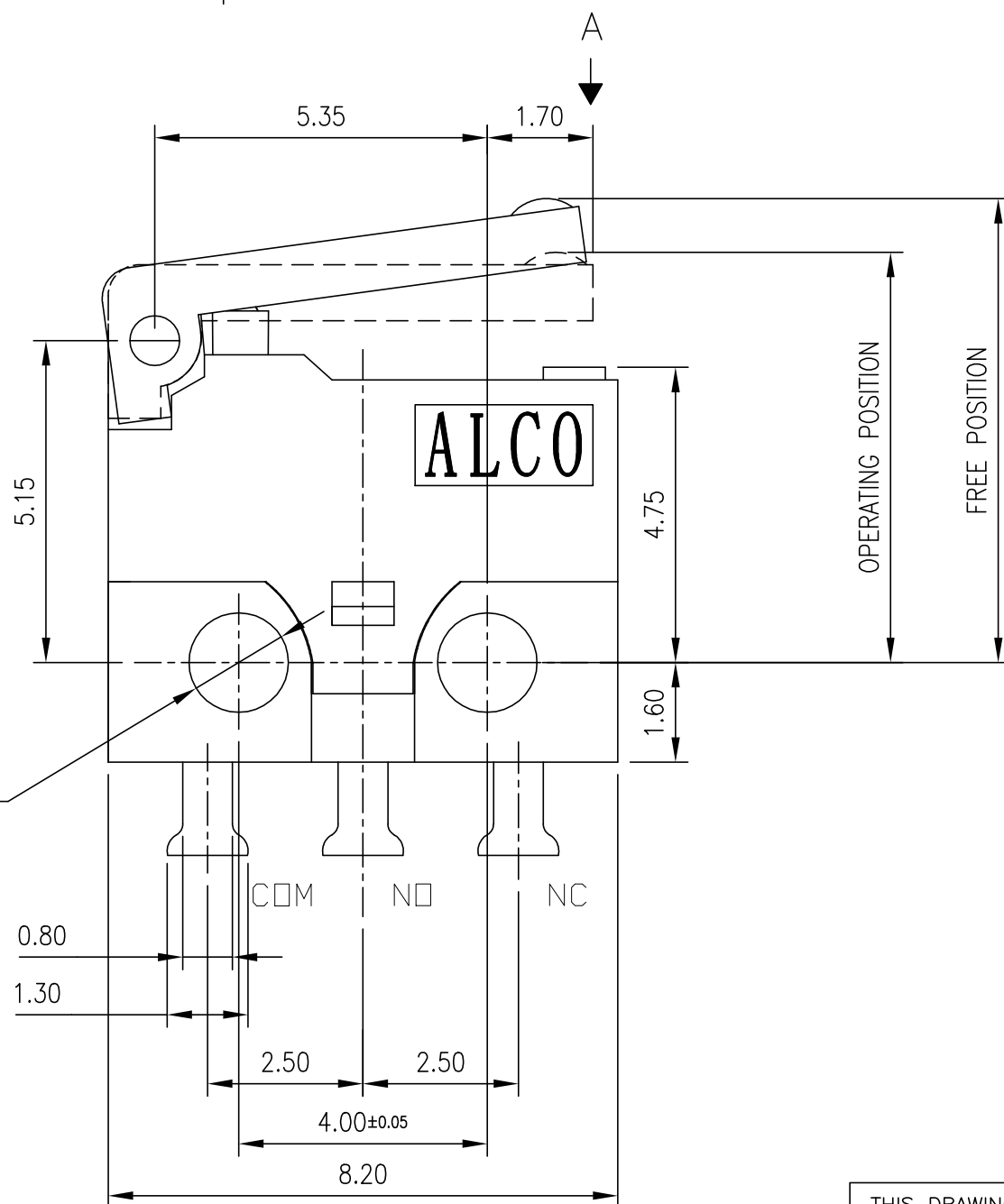
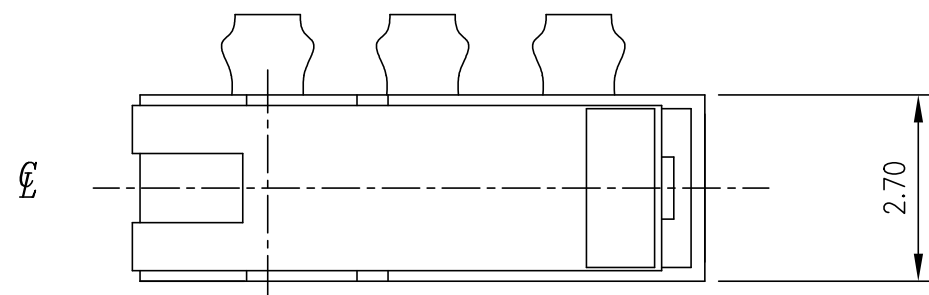
© COPYRIGHT - TE Connectivity Ltd.

ALL RIGHTS RESERVED.

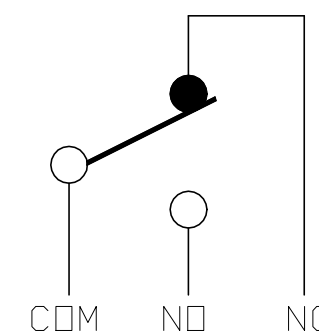
REVISIONS

P	LTR	DESCRIPTION	DATE	DWN	APVD
1		NEW DRAWING	13MAY2019	GCM	AS

APPLICABLE FOR TE P/N
2351461-1
2351461-4



P.C.B. LAYOUT



CIRCUIT DIAGRAM

PRELIMINARY

D

D

C

C

B

B

A

A

THIS DRAWING IS A CONTROLLED DOCUMENT.

DWN GANESH C M 13MAY2019

CHK ALEXANDER SHARPE 13MAY2019

APVD ALEXANDER SHARPE 13MAY2019

PRODUCT SPEC

APPLICATION SPEC

WEIGHT

CUSTOMER DRAWING

TE TE Connectivity Ltd.

NAME SWITCH, MINIATURE SNAP ACTION, HINGE LEVER, RIGHT ANGLE, RIGHT, TERMINALS

SIZE	CAGE CODE	DRAWING NO	RESTRICTED TO
A3	00779	C=2351461	-

DIMENSIONS:	TOLERANCES UNLESS OTHERWISE SPECIFIED:
mm	
0 PLC	± -
1 PLC	± 0.15
2 PLC	± 0.15
3 PLC	± -
4 PLC	± -
ANGLES	± -
MATERIAL	FINISH
-	-

PRELIMINARY

4

3

2

1

THIS DRAWING IS UNPUBLISHED.

RELEASED FOR PUBLICATION

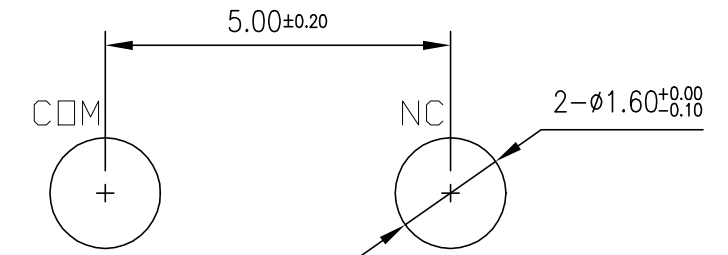
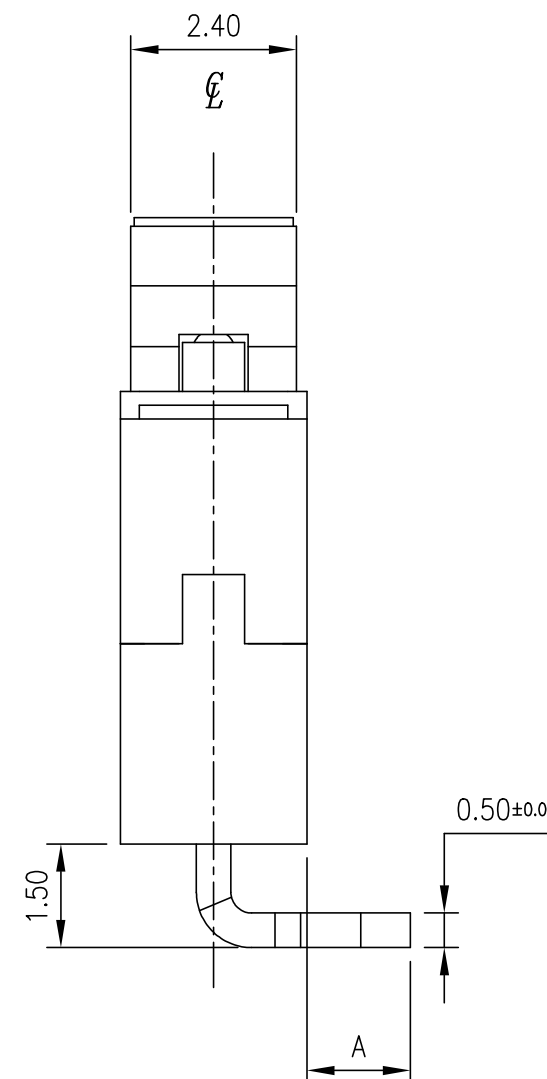
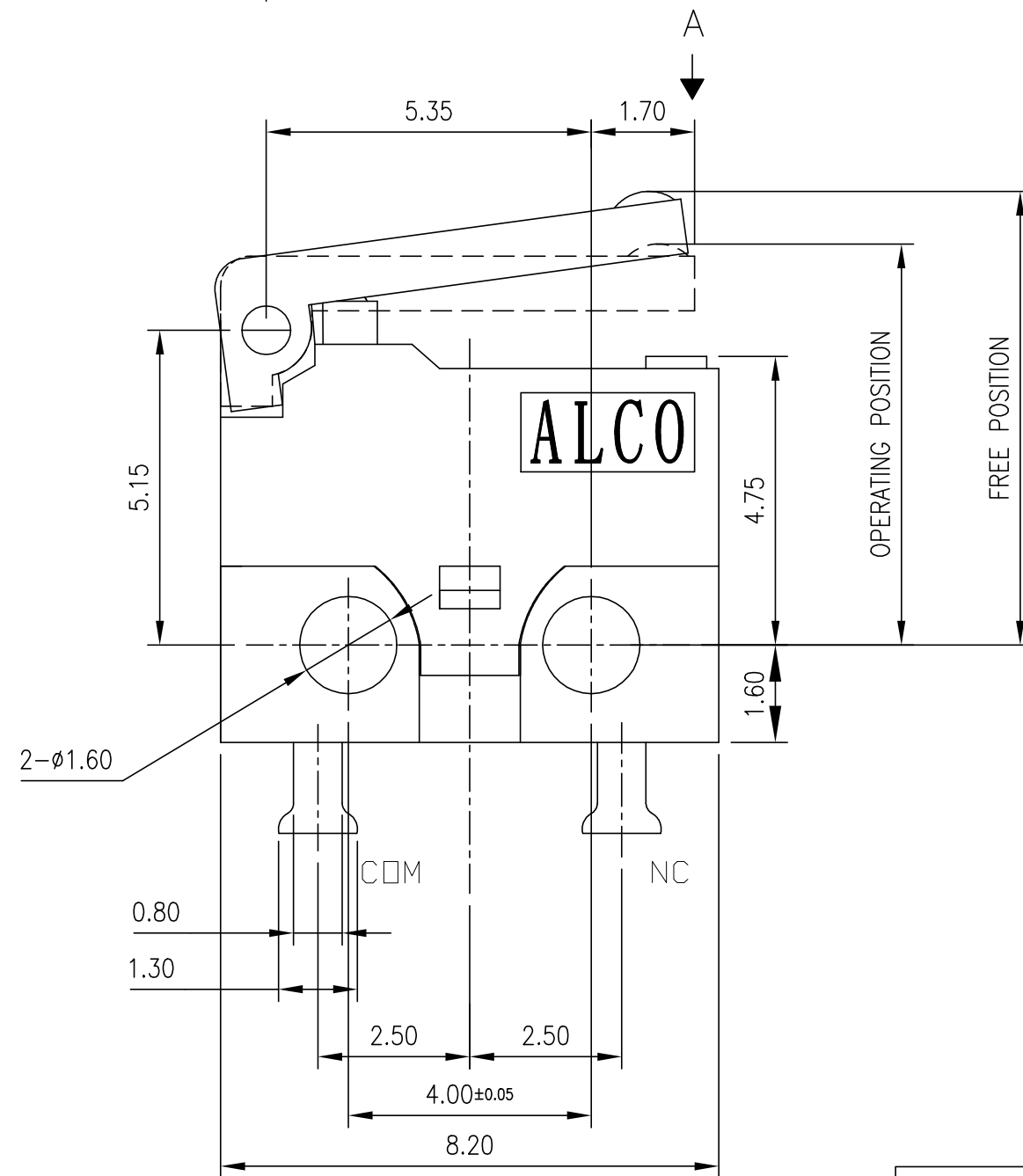
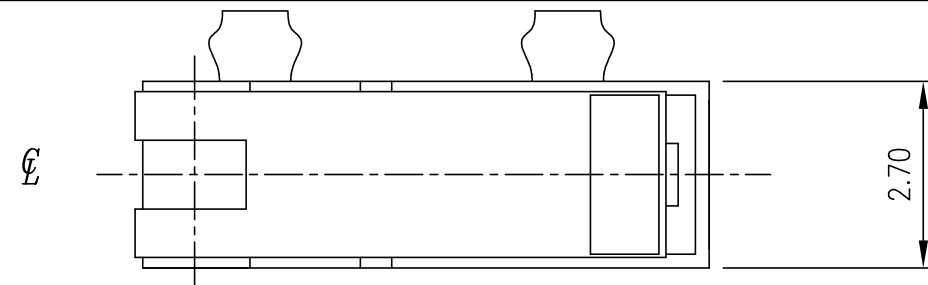
REVISIONS

© COPYRIGHT - TE Connectivity Ltd.

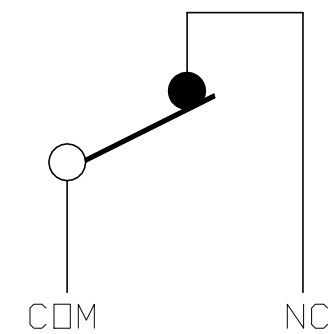
ALL RIGHTS RESERVED.

P	LTR	DESCRIPTION	DATE	DWN	APVD
-	-	SEE SHEET 1	-	-	-

APPLICABLE FOR TE P/N
2351461-2
2351461-5



P.C.B. LAYOUT



CIRCUIT DIAGRAM

THIS DRAWING IS A CONTROLLED DOCUMENT.		DWN	13MAY2019		 TE Connectivity Ltd.
		CHK	13MAY2019		
		APVD	13MAY2019		
		PRODUCT SPEC	ALEXANDER SHARPE		
		APPLICATION SPEC	-		NAME
		WEIGHT	-		SWITCH, MINIATURE SNAP ACTION, HINGE LEVER, RIGHT ANGLE, RIGHT, TERMINALS
		CUSTOMER DRAWING	SIZE	CAGE CODE	DRAWING NO
			A3	00779	2351461
			SCALE	SHEET	REV
			NTS	2 of 4	1

PRELIMINARY

4

3

2

1

THIS DRAWING IS UNPUBLISHED.

RELEASED FOR PUBLICATION

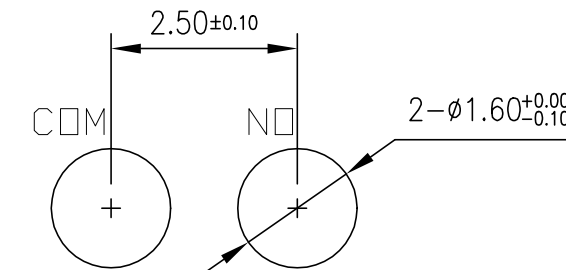
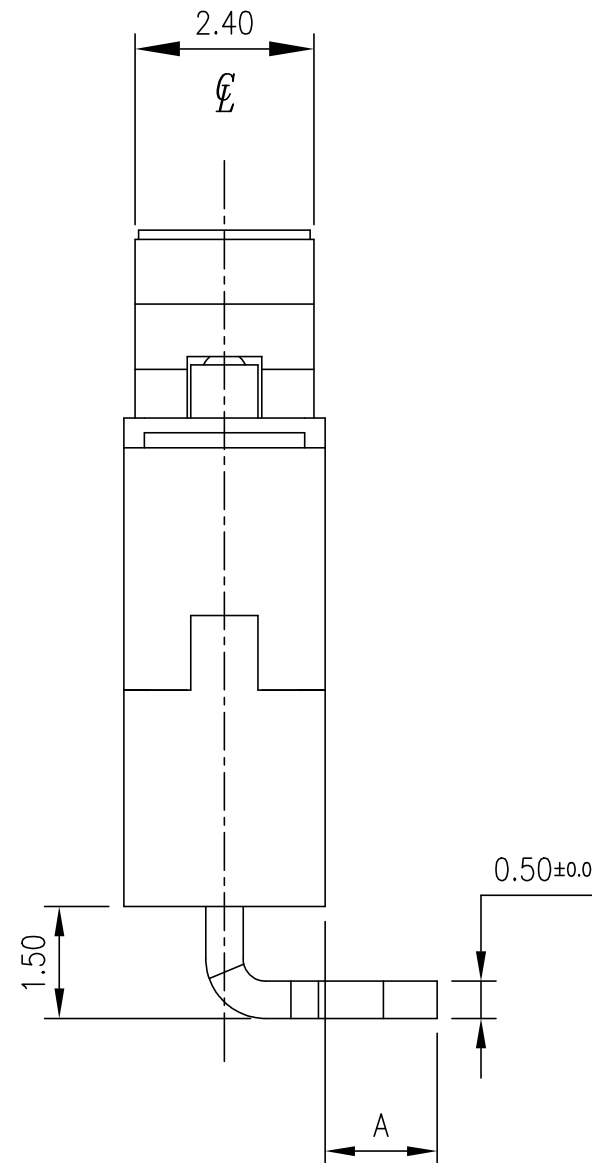
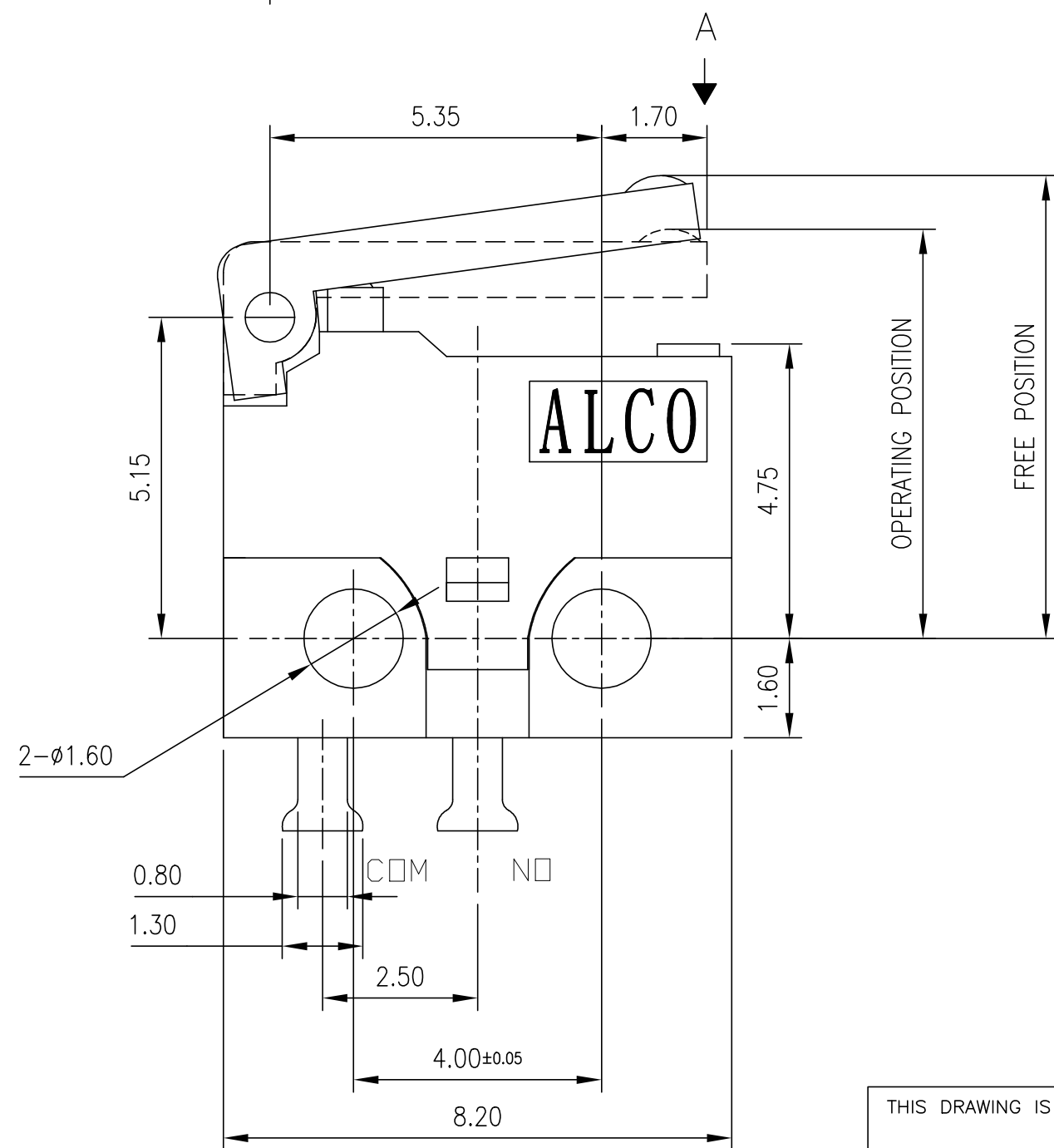
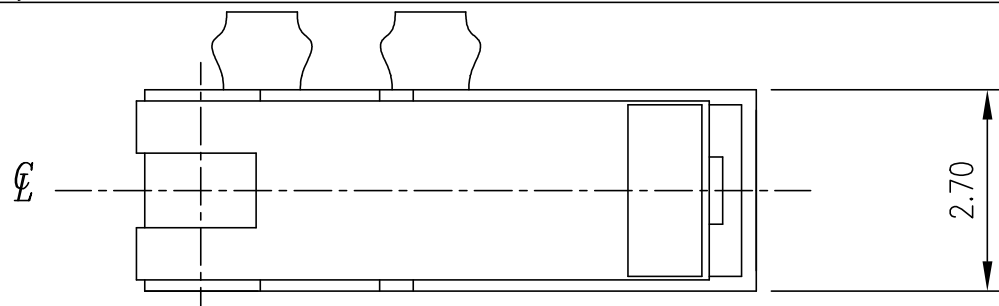
© COPYRIGHT - TE Connectivity Ltd.

ALL RIGHTS RESERVED.

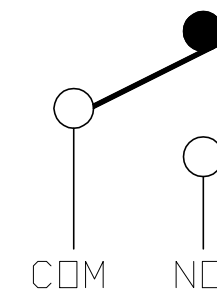
REVISIONS

P	LTR	DESCRIPTION	DATE	DWN	APVD
-	-	SEE SHEET 1	-	-	-

APPLICABLE FOR TE P/N
2351461-3
2351461-6



P.C.B. LAYOUT



CIRCUIT DIAGRAM

THIS DRAWING IS A CONTROLLED DOCUMENT.

DWN GANESH C M 13MAY2019

CHK ALEXANDER SHARPE 13MAY2019

APVD ALEXANDER SHARPE 13MAY2019

PRODUCT SPEC

APPLICATION SPEC

WEIGHT -

CUSTOMER DRAWING

TE TE Connectivity Ltd.

NAME SWITCH, MINIATURE SNAP ACTION, HINGE LEVER, RIGHT ANGLE, RIGHT, TERMINALS

SIZE	CAGE CODE	DRAWING NO	RESTRICTED TO
A3	00779	2351461	-

SCALE NTS SHEET 3 of 4 REV 1

DIMENSIONS:	TOLERANCES UNLESS OTHERWISE SPECIFIED:
mm	
0 PLC	± -
1 PLC	± 0.15
2 PLC	± 0.15
3 PLC	± -
4 PLC	± -
ANGLES	± -
MATERIAL	FINISH
-	-

PRELIMINARY

THIS DRAWING IS UNPUBLISHED. RELEASED FOR PUBLICATION
 © COPYRIGHT - TE Connectivity Ltd. ALL RIGHTS RESERVED.

REVISIONS				
P	LTR	DESCRIPTION	DATE	APVD
-	-	SEE SHEET 1	-	-

NOTES:

- OPERATING CHARACTERISTICS ARE FOR OPERATION IN THE A DIRECTION ↓
- PACKAGING:
SWITCHES ARE BULK PACKAGED IN BAGS, 500 SWITCHES PER BAG, 2 BAGS PER BOX.
- COMPLIANCE:
THE CURRENT STATEMENT OF COMPLIANCE IS AVAILABLE AT TE.COM.
- MATERIAL AND FINISH:
COVER: THERMOPLASTIC, BLACK
BASE: THERMOPLASTIC, BLACK
BUTTON: THERMOPLASTIC, BLACK
CONTACT: SILVER ALLOY
TERMINAL: BRASS, SILVER PLATED
SPRING PLATE: COPPER ALLOY
LEVER: THERMOPLASTIC, BLACK
- SPECIFICATIONS:
CURRENT RATING: SEE TABLE
CONTACT RESISTANCE: 100mΩ MAXIMUM, INITIAL, AT FREE POSITION AND TOTAL TRAVEL POSITION
INSULATION RESISTANCE: 100MΩ MINIMUM, @ 100 V DC, 1 MINUTE, INITIAL.
DIELECTRIC WITHSTANDING VOLTAGE, BETWEEN TERMINALS OF THE SAME POLARITY: 250 V AC, 50 TO 60 Hz FOR 1 MINUTE
DIELECTRIC WITHSTANDING VOLTAGE, BETWEEN EACH TERMINAL AND GROUND: 250 V AC, 50 TO 60 Hz FOR 1 MINUTE
DIELECTRIC WITHSTANDING VOLTAGE, BETWEEN EACH TERMINAL AND NON-CURRENT CARRYING METAL PART :1500 V AC, 50 TO 60 Hz FOR 1 MINUTE
- SOLDER PROCESS:
MANUAL SOLDERING: 350°C, 3 SECONDS MAXIMUM, 30 TO 40 WATTS. PREVENT SOLDER AND FLUX CONTACTING THE SWITCH BODY.
DO NOT OPERATE THE SWITCH DURING THE FIRST MINUTE AFTER SOLDERING.
WAVE SOLDERING: 260°C, 5 SECONDS MAXIMUM. PREVENT SOLDER AND FLUX CONTACTING THE SWITCH BODY.
DO NOT OPERATE THE SWITCH DURING THE FIRST MINUTE AFTER SOLDERING.

CONTACT FINISH	CONTACT FORM	MECHANICAL LIFE	ELECTRICAL LIFE	STORAGE TEMPERATURE RANGE/HUMIDITY RANGE	OPERATING TEMPERATURE RANGE/HUMIDITY RANGE	MOVEMENT DIFFERENTIAL	OVERTRAVEL	PRETRAVEL	OPERATING POSITION	FREE POSITION	RELEASE FORCE	OPERATING FORCE	CONTACT RATING	CONTACT CONFIGURATION	DIMENSION "A"	TERMINAL TYPE	TE SMART PART NUMBER	PART NUMBER
SILVER	SPST, NORMALLY OPEN	100,000 CYCLES, MINIMUM	50,000 CYCLES, MINIMUM	-40 TO +85°C/85% RELATIVE HUMIDITY MAXIMUM	-40 TO +85°C/60% RELATIVE HUMIDITY MAXIMUM	0.70 MAXIMUM	0.30 MINIMUM	1.80 MAXIMUM	6.7±0.5	8.0 MAXIMUM	3 gf MINIMUM	50 gf MAXIMUM	0.5A, 30V DC	MOMENTARY	3.10	RIGHT ANGLE, RIGHT	SAJ405XHL0N30SNOLRQ	2351461-6
	SPST, NORMALLY CLOSED																SAJ405XHL0N30SNCLRQ	2351461-5
	SPDT																SAJ405XHL0N30SDTLRQ	2351461-4
	SPST, NORMALLY OPEN																SAJ405XHL0N30SNOSRQ	2351461-3
	SPST, NORMALLY CLOSED																SAJ405XHL0N30SNCSRQ	2351461-2
	SPDT																SAJ405XHL0N30SDTSRQ	2351461-1

THIS DRAWING IS A CONTROLLED DOCUMENT.

DIMENSIONS: mm	TOLERANCES UNLESS OTHERWISE SPECIFIED:
	0 PLC ± - 1 PLC ± 0.15 2 PLC ± 0.15 3 PLC ± - 4 PLC ± - ANGLES ± -
MATERIAL	FINISH
-	-

DWN	13MAY2019
CHK	13MAY2019
APVD	13MAY2019
NAME	
ALEXANDER SHARPE	
PRODUCT SPEC	
APPLICATION SPEC	
WEIGHT	
-	
CUSTOMER DRAWING	

TE TE Connectivity Ltd.

NAME			
SWITCH, MINIATURE SNAP ACTION, HINGE LEVER, RIGHT ANGLE, RIGHT, TERMINALS			
SIZE	CAGE CODE	DRAWING NO	RESTRICTED TO
A3	00779	C=2351461	-
SCALE		SHEET	REV
NTS		4 of 4	1

PRELIMINARY