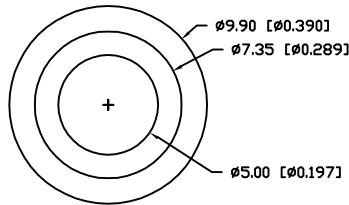


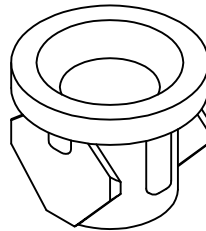
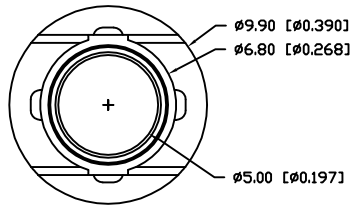
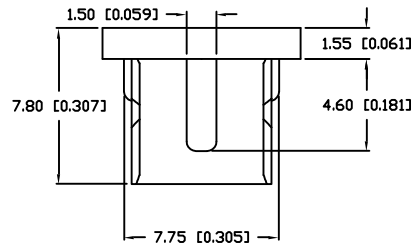
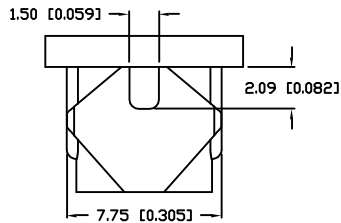
UNCONTROLLED DOCUMENT

PART NUMBER
SSH-LXH501

REV.



SSH-LXH501



UNCONTROLLED DOCUMENT

*UNLESS OTHERWISE SPECIFIED TOLERANCES PER DECIMAL PRECISION ARE: X=±1 (±0.039), X.X=±0.5 (±0.020), X.XX=±0.25 (±0.010), X.XXX=±0.127 (±0.005). LEAD SIZE=±0.05 (±0.002), LEAD LENGTH=±0.75 (±0.030). MIN= +DECIMAL PRECISION -0.00 MAX.= +0.00 -DECIMAL PRECISION

REV.	PART NUMBER SSH-LXH501
------	---------------------------

CONFIDENTIAL INFORMATION
THE INFORMATION CONTAINED IN THIS DOCUMENT IS THE PROPERTY OF LUMEX INC. EXCEPT AS SPECIFICALLY AUTHORIZED IN WRITING BY LUMEX INC., THE HOLDER OF THIS DOCUMENT SHALL KEEP ALL INFORMATION CONTAINED HEREIN CONFIDENTIAL AND SHALL PROTECT SAME IN WHOLE OR IN PART FROM DISCLOSURE AND DISSEMINATION TO ALL THIRD PARTIES.



290 E. HELEN ROAD
PALATINE, IL 60067-6976
PHONE: +1.847.359.2790
US WEB: www.lumex.com
TW WEB: www.lumex.com.tw

PANEL INDICATOR HOLDER.

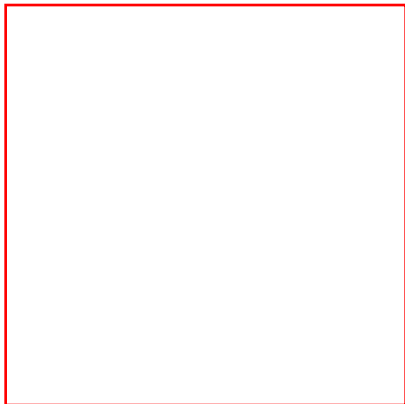
RELIABILITY NOTE
OUR MANY YEARS OF EXPERIENCE DATA ACCUMULATION INDICATE THAT SOLDER HEAT IS A MAJOR CAUSE OF EARLY AND FUTURE FAILURE. PLEASE PAY ATTENTION TO YOUR SOLDERING PROCESS.

DRAWN BY:	CHECKED BY:	APPROVED BY:	DATE:
			PAGE: 1 OF 1
			SCALE: N/A

One Piece 5mm LED Panel Bezel

INDEX

PRODUCT TREE



- [Product Table](#)
- [Order Samples](#)
- [Stock/Price Request](#)
- [Sales and Tech Support](#)

1. [Product Gallery](#)
2. [LED Panel, PCB and Array Indicator Assemblies](#)
3. [Panel Mount LED Indicators](#)
4. [Panel Mounting Hardware](#)
5. [Panel Mount Holders](#)
6. [One Piece 5mm LED Panel Bezel](#)

[View](#) Image next to part no. indicates cad file.

Lumex drawings are in PDF format. If you don't have Adobe Acrobat, click on this icon to

[download a free copy](#)



Lumex Part Number	Material	Panel Hole
SSH-LXH501 View	Black Nylon	0.330"

[Home](#) |
 [What's New](#) |
 [Product Gallery](#) |
 [Product Search](#) |
 [X-Ref Search Engine](#) |
 [Tech Notes](#) |
 [Sales and Tech Support](#) |
 [Corporate Info](#)

290 East Helen Road Palatine, IL 60067 Telephone: (847) 359-2790 Facsimile: (847) 359-8904 E-mail us at sales@lumex.com

Mouser Electronics

Authorized Distributor

Click to View Pricing, Inventory, Delivery & Lifecycle Information:

[Lumex:](#)

[SSH-LXH501](#)