

FEATURES

- 316 Stainless Steel hose nipple, fully threaded
- 150 lb fitting
- Screwed BSPT (Tapered) connection
- Barbed hose tail connection
- Various sizes, from 3/8" (9.5 mm) up to 2" (51 mm)

RS PRO Stainless Steel Hexagon Hose Nipple 1-1/2in R(T) Male Male 3.15in

RS Stock No.: 499-3798



RS Professionally Approved Products bring to you professional quality parts across all product categories. Our product range has been tested by engineers and provides a comparable quality to the leading brands without paying a premium price.

Product Description

Brought to you by RS Pro, a series of stainless steel threaded fittings, suitable for applications requiring a secure and reliable pipe connection. Heavily used within the plumbing industry, water and gas will flow through in a tightly sealed construction. These pipe fittings are made from a durable 316 stainless steel material and are available in various sizes to make sure there's a perfect fit. All models are highly reliable and excellent quality.

General Specifications

Connection 1	1-1/2 in R Male
Connection 2	40mm Barbed Male
Shape	Hexagon
Fitting Type	Hose Nipple
Thread Size 1	1-1/2in
Connection Gender 1	Male
Connection Gender 2	Male
Thread Standard 1	R (taper)
Weight	0.283kg
Material	S/S 316
Application	All throughout the home (bathroom, kitchen etc.)Any building with running water, heating or gas; Sewage and underground networks; Ships and boats; Car engines

Mechanical Specifications

Length	3.15in
---------------	--------



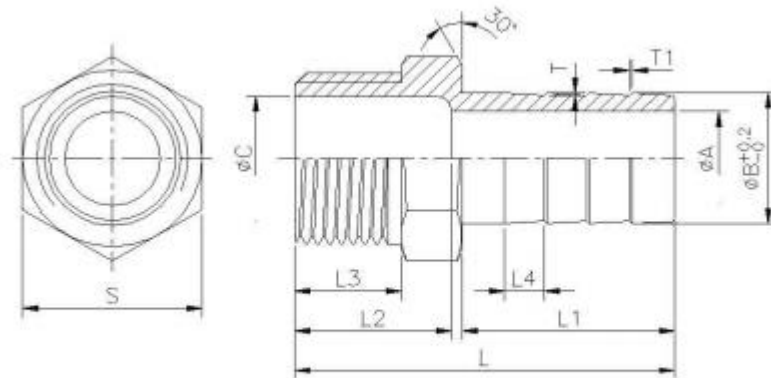


Figure 1

A	B	C	L	L1	L2	L3	L4	S	T	T1	Weight (kg)
33.3	40	39.5	80	47.5	28	22	9.2	50	0.5	0.5	0.283