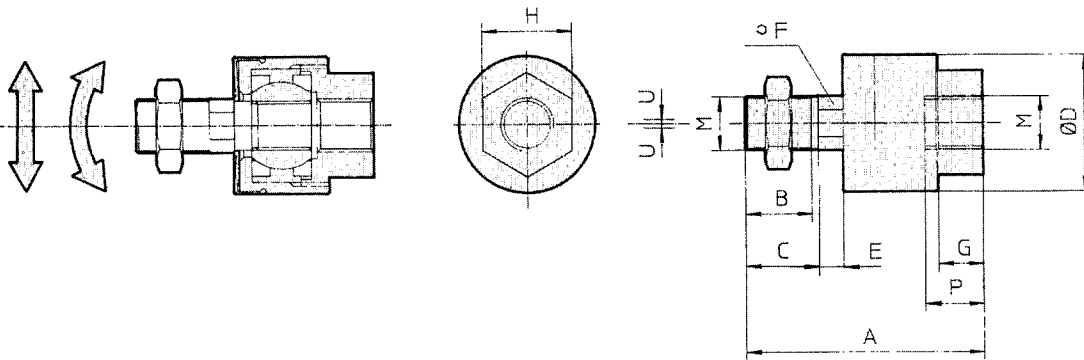


**Piston Rod mounting accessory dimensions**

[mm]

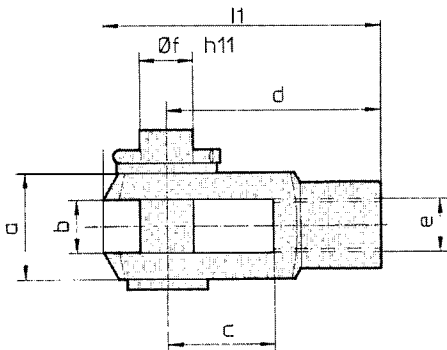
**Floating joint JA**  
Carbon tool steel

Ø Bore	M	Order No.	A	B	C	ØD	E	F	G	H	P	U	Load [kN]	Weight [g]	Angle
32	M10x1.25	JA30-10-125	49.5	19.5	-	24	5	8	8	17	9	0.5	2.5	70	
40	M12x1.25	JA40-12-125	60	20	-	31	6	11	11	22	13	0.75	4.4	160	±5°
50/63	M16x1.5	JA50-16-150	71.5	22	-	41	7.5	14	13.5	27	15	1.0	11	300	
80/100	M20x1.5	JAH50-20-150	101	28	31	59.5	11.5	24	16	32	18	2.0	18	1080	

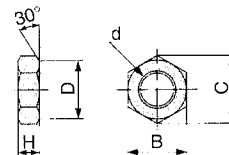


**Rod clevis GKM (DIN 71752), supplied with bolt and safety device**  
Chromed steel

Ø Bore	e	Order No.	b	d	Øf	l1	c	a
32	M10x1.25	GKM10-20	10	40	10	52	20	20
40	M12x1.25	GKM12-24	12	48	12	62	24	24
50/63	M16x1.5	GKM16-32	16	64	16	83	32	32
80/100	M20x1.5	GKM20-40	20	80	20	105	40	40



**Rod end nut**  
(standard equipment)



Order No.	Bore size (mm)	d	H	B	C	D
NT-03	32	M10 x 1.25	6	17	19.6	16.5
NT-04	40	M14 x 1.5	8	22	25.4	21
NT-05	50, 63	M18 x 1.5	11	27	31.2	26
NT-08	80	M22 x 1.5	13	32	37.0	31
NT-10	100	M26 x 1.5	16	41	47.3	39

**Piston rod ball joint KJ (DIN 648)**  
Zinc chromate plated steel

Ø Bore	d3	Order No.	d1	h	d6	b3	b1	l	d7	α	l3	sw
32	M10x1.25	KJ10D	10	43	28	10.5	14	20	19	13°	14	17
40	M12x1.25	KJ12D	12	50	32	12	16	22	22	13°	16	19
50/63	M16x1.5	KJ16D	16	64	42	15	21	28	27	15°	26	32
80/100	M20x1.5	KJ20D	20	77	50	18	25	33	34	15°	26	32

