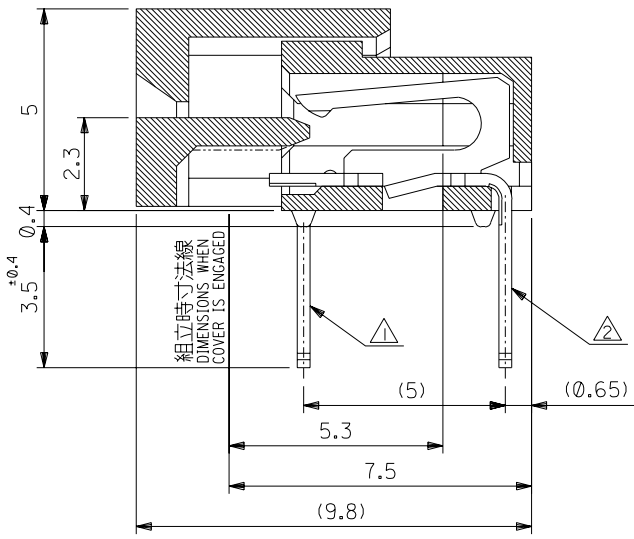
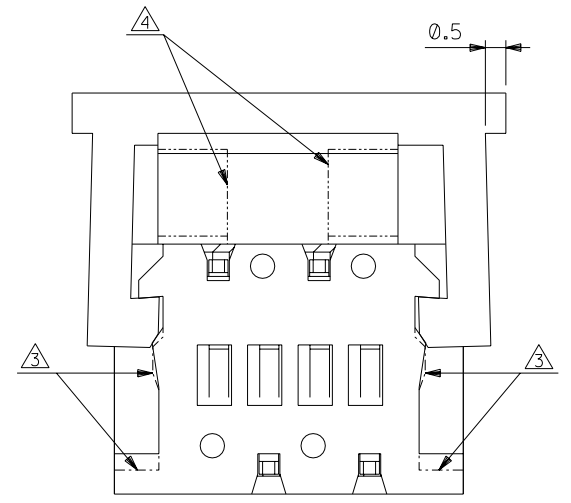
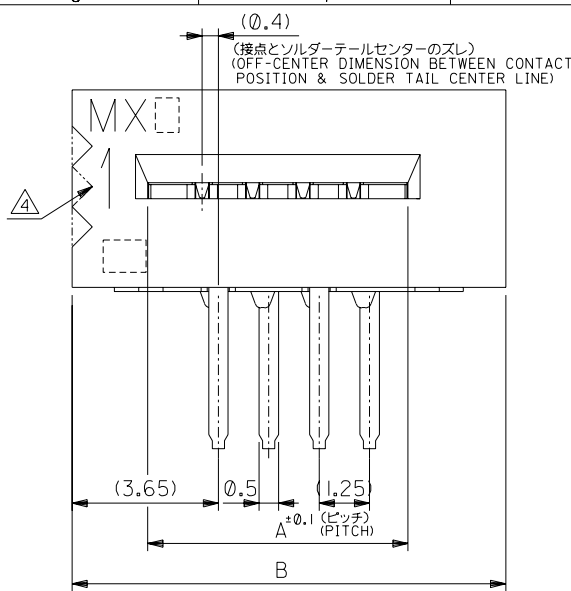


DO NOT SCALE DRAWING

DWG. NO. SD-5597-004



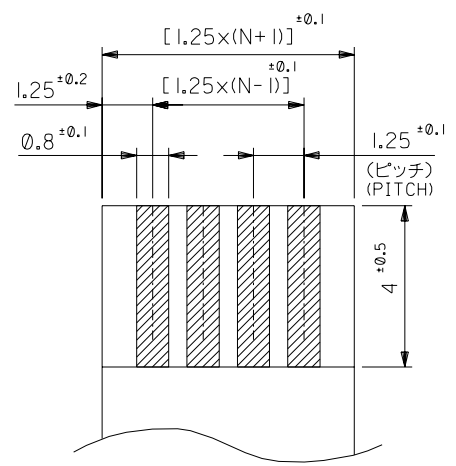
**注記 NOTES**

- ① MX J側を基準に奇数番目の極におけるソルダーテール。  
SOLDER TAIL OF ODD CKTS, MXJ MARK AS BASIC.
- ② MX J側を基準に偶数番目の極におけるソルダーテール。  
SOLDER TAIL OF EVEN CKTS, MXJ MARK AS BASIC.
- ③ 3極~10極に適用。APPLY FOR 3-10 CKTS.
- ④ 3極~19極に適用。APPLY FOR 3-19 CKTS.
- 5. ( ) 内寸法は、参考値。  
( ) DIMENSION IS FOR REFERENCE.
- 6. ソルダーテールは、先端が取付推奨穴にガイドされること。  
ガイドされること。  
SOLDER TAILS MAY BE CHECKED BY INSERTION FOR RECOMMENDED PCB BOARD HOLES.

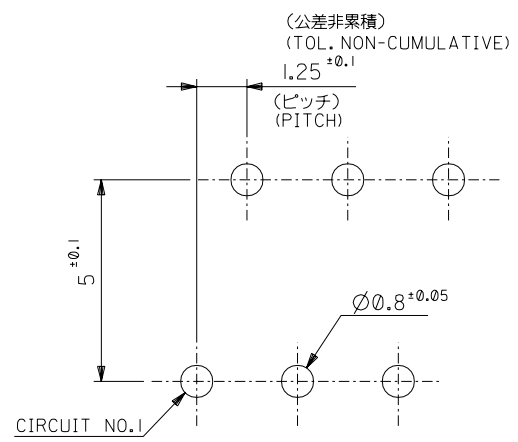
48.25	43.95	39-51-3343	5597-34APB	34
47.00	42.70	-3333	-33APB	33
45.75	41.45	-3323	-32APB	32
44.50	40.20	-3313	-31APB	31
43.25	38.95	-3303	-30APB	30
42.00	37.70	-3293	-29APB	29
40.75	36.45	-3283	-28APB	28
39.50	35.20	-3273	-27APB	27
38.25	33.95	-3263	-26APB	26
37.00	32.70	-3253	-25APB	25
35.75	31.45	-3243	-24APB	24
34.50	30.20	-3233	-23APB	23
33.25	28.95	-3223	-22APB	22
32.00	27.70	-3213	-21APB	21
30.75	26.45	-3203	-20APB	20
29.50	25.20	-3193	-19APB	19
28.25	23.95	-3183	-18APB	18
27.00	22.70	-3173	-17APB	17
25.75	21.45	-3163	-16APB	16
24.50	20.20	-3153	-15APB	15
23.25	18.95	-3143	-14APB	14
22.00	17.70	-3133	-13APB	13
20.75	16.45	-3123	-12APB	12
19.50	15.20	-3113	-11APB	11
18.25	13.95	-3103	-10APB	10
17.00	12.70	-3093	-09APB	9
15.75	11.45	-3083	-08APB	8
14.50	10.20	-3073	-07APB	7
13.25	8.95	-3063	-06APB	6
12.00	7.70	-3053	-05APB	5
10.75	6.45	-3043	-04APB	4
9.50	5.20	39-51-3033	5597-03APB	3
B	A	MATERIAL NO.	ENG. NO.	極数 CKT.

②64 NO. DRWN: CH'K: APPR: ②63 NO. DRWN: CH'K: APPR: ②62 NO. DRWN: CH'K: APPR: ②61 NO. DRWN: CH'K: APPR:	再作図及び変更 REDRAWN & REVISED ②60 NO. J2003-2624 DRWN: K. TOJO '03/04/17 CH'K: H. Saito '03/04/17 APPR: H. Saito '03/04/17	MATERIAL HOUSING, ACTUATOR : 材料 PBTP, UL94V-0 TERMINAL : PHOSPHOR-BRONZE THK : 0.3+	GENERAL TOLERANCES: (UNLESS SPECIFIED) 一般公差	SCALE	DESIGN UNITS	DIMENSIONS: ②888 ②889 ②890 ②891 ②892 ②893 ②894 ②895 ②896 ②897 ②898 ②899 <input type="checkbox"/> mm <input type="checkbox"/> INCH <input checked="" type="checkbox"/> mm ONLY <input type="checkbox"/> INCH ONLY	SHT	REV
				10 UNDER 未満 ±0.2 10 OVER 以上 30 UNDER 未満 ±0.25 30 OVER 以上 ±0.3	// <input checked="" type="checkbox"/> mm <input type="checkbox"/> INCH		DRAWN BY & DATE K. TOJO '03/04/15 CHECKED BY & DATE H. Saito '03/04/17 APPROVED BY & DATE H. Saito '03/04/17	TITLE:
WIRE RANGE 適用線径範囲	DESCRIPTION ②888 ②889 ②890 ②891 ②892 ②893 ②894 ②895 ②896 ②897 ②898 ②899	FINISH TIN-LEAD(9:1) 3~5MICRON 仕上げMETER OVER COPPER 1~2.5 MICRON METER PLATING.	ANGLE 角度 ±3°	CAD FILENAME SD-5597-004.S01	MATERIAL NO. 39-51-3**3	DRAWING NO. SD-5597-004	SHEET NO. 1 OF 2	SIZE B

5597-004.S04



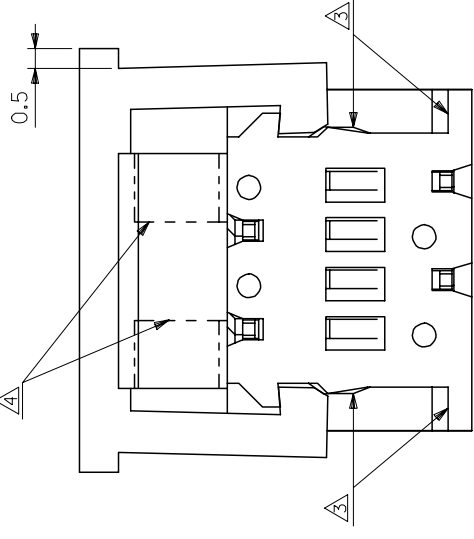
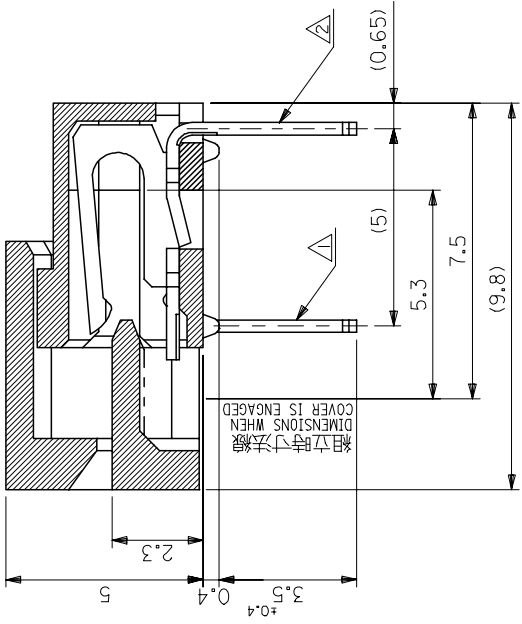
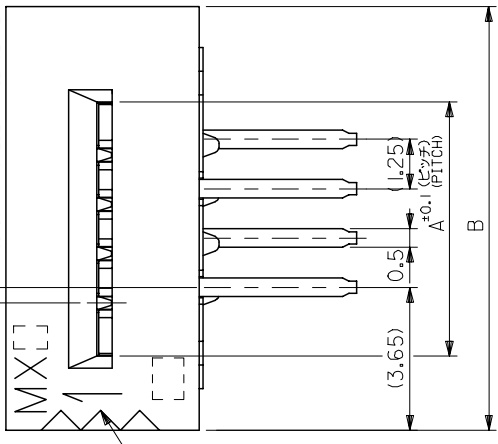
適合FPC/FFC推奨寸法  
RECOMMENDED FPC/FFC  
厚さ THK : 0.3 ±0.05



基板取付穴推奨寸法 (t=1.6)  
RECOMMENDED P.C. BOARD  
HOLE DIMENSION

DRAWING NO. DRAWN: CHK: APPR:	DRAWING NO. DRAWN: CHK: APPR:	DRAWING NO. DRAWN: CHK: APPR:	DRAWING NO. DRAWN: CHK: APPR:	DRAWING NO. DRAWN: CHK: APPR:	再作図及び変更 REDRAWN & REVISED J2003-2624 DRAWN: K. TOJO '03/04/17 CHK: H. Sasaki '03/04/17 APPR: H. Sasaki '03/04/17	MATERIAL 材料	GENERAL TOLERANCES: (UNLESS SPECIFIED) 一般公差	SCALE	DESIGN UNITS	DIMENSIONS: <input type="checkbox"/> mm <input type="checkbox"/> INCH <input checked="" type="checkbox"/> mm ONLY	SHT	REV
						SEE SHEET 1	10 UNDER 未満 ±0.2	//	mm <input checked="" type="checkbox"/> INCH			
DRAWING NO. DRAWN: CHK: APPR:	DRAWING NO. DRAWN: CHK: APPR:	DRAWING NO. DRAWN: CHK: APPR:	DRAWING NO. DRAWN: CHK: APPR:	DRAWING NO. DRAWN: CHK: APPR:	再作図及び変更 REDRAWN & REVISED J2003-2624 DRAWN: K. TOJO '03/04/17 CHK: H. Sasaki '03/04/17 APPR: H. Sasaki '03/04/17	FINISH 仕上り	10 OVER 30 UNDER 未満 ±0.25	DRAWN BY & DATE K. TOJO '03/04/15	TITLE: 1.25 FPC Conn Assy ZIF	APPROVED BY & DATE M. Sasaki '03/04/17	MATERIAL NO. 39-51-3**3	DRAWING NO. SD-5597-004
						SEE SHEET 1	30 OVER 以上 ±0.3					
DRAWING NO. DRAWN: CHK: APPR:	DRAWING NO. DRAWN: CHK: APPR:	DRAWING NO. DRAWN: CHK: APPR:	DRAWING NO. DRAWN: CHK: APPR:	DRAWING NO. DRAWN: CHK: APPR:	再作図及び変更 REDRAWN & REVISED J2003-2624 DRAWN: K. TOJO '03/04/17 CHK: H. Sasaki '03/04/17 APPR: H. Sasaki '03/04/17	WIRE RANGE 適用電線範囲	ANGLE 角度 ±3°	CAD FILENAME SD-5597-004.S02	MATERIAL NO. 39-51-3**3	DRAWING NO. SD-5597-004	SHEET NO. 2 OF 2	SIZE B
						INS. RANGE 被覆外径	//	MOLEX MOLEX INCORPORATED				

(0.4)  
 (接点とソルダーテールセンターのズレ)  
 (OFF-CENTER DIMENSION BETWEEN CONTACT  
 POSITION & SOLDER TAIL CENTER LINE)



注記 NOTES

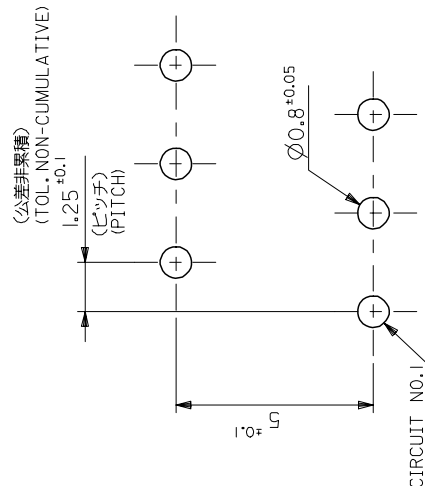
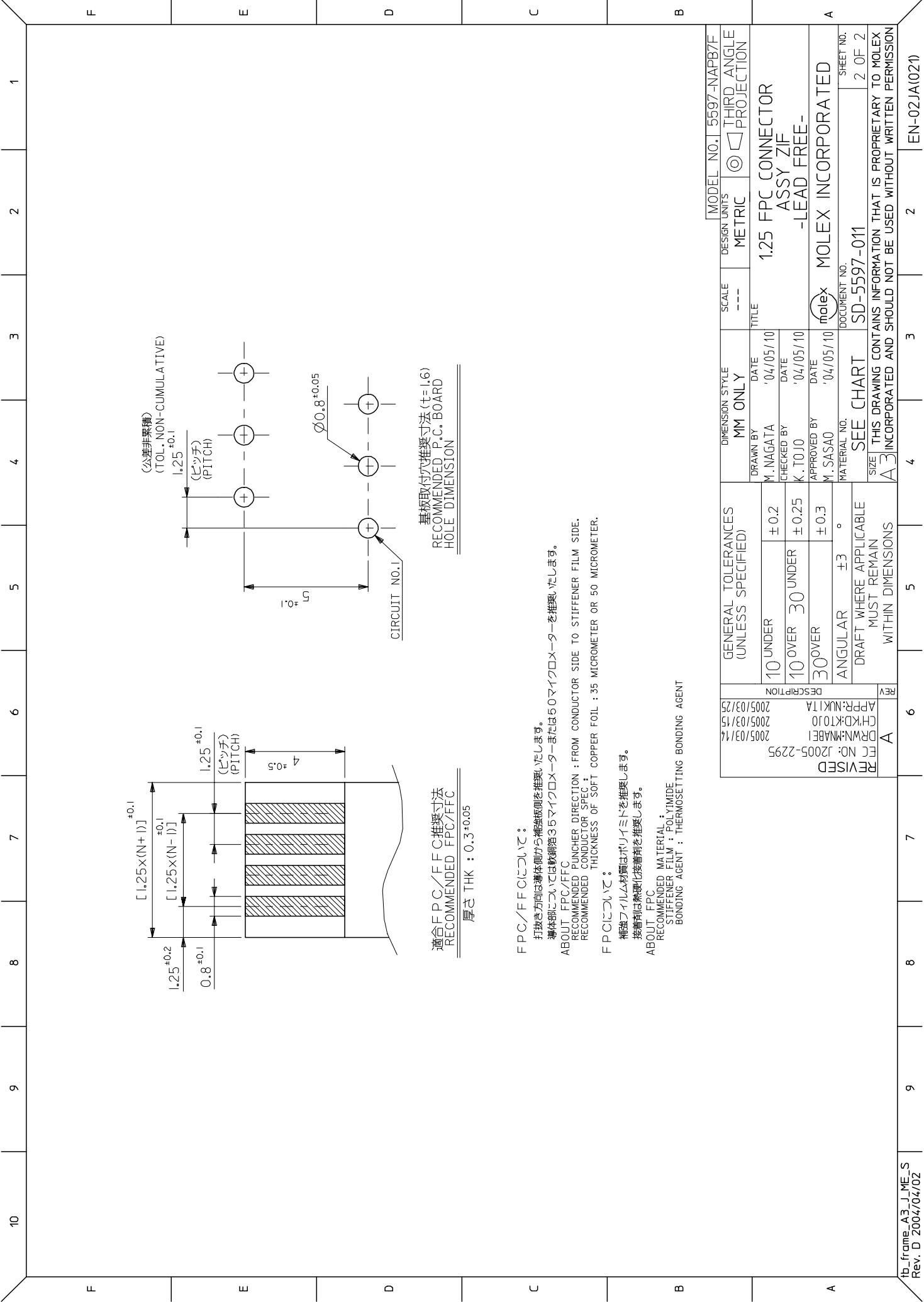
- △ MX J側を基準に奇数番目の極におけるソルダーテール。  
 SOLDER TAIL OF ODD CKTS, MXJ MARK AS BASIC.
- △ MX J側を基準に偶数番目の極におけるソルダーテール。  
 SOLDER TAIL OF EVEN CKTS, MXJ MARK AS BASIC.
- △ 3極～10極に適用。APPLY FOR 3-10 CKTS.
- △ 3極～19極に適用。APPLY FOR 3-19 CKTS.
- 5. ( ) 内寸法は、参考値。
- 6. ( ) DIMENSION IS FOR REFERENCE.
- 6. ソルダーテールは、先端が取付推奨穴にガイドされること。  
 SOLDER TAILS MAY BE CHECKED BY INSERTION  
 FOR RECOMMENDED PCB BOARD HOLES.
- 7. 本製品は5597-NAPBの鉛フリー製品である。  
 THIS PRODUCT IS LEAD FREE OF 5597-NAPB.

48.25	43.95	39-53-2344	5597-34APB7F	34
47.00	42.70	-2334	-33APB7F	33
45.75	41.45	-2324	-32APB7F	32
44.50	40.20	-2314	-31APB7F	31
43.25	38.95	-2304	-30APB7F	30
42.00	37.70	-2294	-29APB7F	29
40.75	36.45	-2284	-28APB7F	28
39.50	35.20	-2274	-27APB7F	27
38.25	33.95	-2264	-26APB7F	26
37.00	32.70	-2254	-25APB7F	25
35.75	31.45	-2244	-24APB7F	24
34.50	30.20	-2234	-23APB7F	23
33.25	28.95	-2224	-22APB7F	22
32.00	27.70	-2214	-21APB7F	21
30.75	26.45	-2204	-20APB7F	20
29.50	25.20	-2194	-19APB7F	19
28.25	23.95	-2184	-18APB7F	18
27.00	22.70	-2174	-17APB7F	17
25.75	21.45	-2164	-16APB7F	16
24.50	20.20	-2154	-15APB7F	15
23.25	18.95	-2144	-14APB7F	14
22.00	17.70	-2134	-13APB7F	13
20.75	16.45	-2124	-12APB7F	12
19.50	15.20	-2114	-11APB7F	11
18.25	13.95	-2104	-10APB7F	10
17.00	12.70	-2094	-09APB7F	9
15.75	11.45	-2084	-08APB7F	8
14.50	10.20	-2074	-07APB7F	7
13.25	8.95	-2064	-06APB7F	6
12.00	7.70	-2054	-05APB7F	5
10.75	6.45	-2044	-04APB7F	4
9.50	5.20	39-53-2034	5597-03APB7F	3
B	A	EDP NO.	ENG. NO.	極数 CKT.

GENERAL TOLERANCES (UNLESS SPECIFIED)		DIMENSION STYLE MM ONLY	SCALE ---	DESIGN UNITS METRIC	MODEL NO. 5597-NAPB7F
10 UNDER	± 0.2	DRAWN BY M. NAGATA	TITLE 1.25 FPC CONNECTOR	THIRD ANGLE PROJECTION	
10 OVER	30 UNDER	DATE '04/05/10	ASSY ZIF		
30 OVER	± 0.25	CHECKED BY K. TOJO	-LEAD FREE-		
ANGULAR	± 0.3	DATE '04/05/10			
DRAFT WHERE APPLICABLE MUST REMAIN WITHIN DIMENSIONS		APPROVED BY M. SASAO			
	± 3	MATERIAL NO.			
SEE CHART		DOCUMENT NO.			
SD-5597-011					
MOLEX INCORPORATED					
SHEET NO. 1 OF 2					
THIS DRAWING CONTAINS INFORMATION THAT IS PROPRIETARY TO MOLEX INCORPORATED AND SHOULD NOT BE USED WITHOUT WRITTEN PERMISSION					

REVISED	REV	DESCRIPTION
A	2005/03/14	2005/03/15
FC NO: 1205-2295	DR/NAME/ABE	CHK/CKT/TO
APR: NUK/ITA	2005/03/15	2005/03/25

材料 MATERIAL	ACTUATOR : FBTP, UL94V-0 HOUSING : PHOSPOR-BRONZE TERMINAL : 0.3
仕上り FINISH	TIN(SOLDER) : MINIMUM OVER NICKEL PLATING 10 MICROMETER MINIMUM
適用 WIRE RANGE	— # —
検査 INS. RANGE	— # —



基板取付穴推奨寸法 (±=I.6)  
RECOMMENDED P.C. BOARD  
HOLE DIMENSION

適合FPC/FFC推奨寸法  
RECOMMENDED FPC/FFC  
厚さ THK : 0.3 ±0.05

FPC/FFCについて：  
打抜き方向は導体側から補強材側を推奨いたします。  
導体部については教部第3.6マイクロメーターまたは5.0マイクロメーターを推奨いたします。  
ABOUT FPC/FFC  
RECOMMENDED PUNCHER DIRECTION : FROM CONDUCTOR SIDE TO STIFFENER FILM SIDE.  
RECOMMENDED CONDUCTOR SPEC :  
THICKNESS OF SOFT COPPER FOIL : 35 MICROMETER OR 50 MICROMETER.  
FPCについて：  
補強フィルム材質はポリイミドを推奨します。  
接着剤は熱硬化接着剤を推奨します。  
ABOUT FPC  
RECOMMENDED MATERIAL :  
STIFFENER FILM : POLYIMIDE  
BONDING AGENT : THERMOSETTING BONDING AGENT

MODEL NO. 5597-NAPB7F		DESIGN UNITS	SCALE	DIMENSION STYLE	THIRD ANGLE PROJECTION	
		METRIC	---	MM ONLY	1.25 FPC CONNECTOR ASSY ZIF -LEAD FREE-	
DRAWN BY		DATE	TITLE	MOLEX INCORPORATED		
M. NAGATA		'04/05/10		DOCUMENT NO.	SD-5597-011	
CHECKED BY		DATE		SHEET NO.	2 OF 2	
K. TOJO		'04/05/10		THIS DRAWING CONTAINS INFORMATION THAT IS PROPRIETARY TO MOLEX INCORPORATED AND SHOULD NOT BE USED WITHOUT WRITTEN PERMISSION		
APPROVED BY		DATE				
M. SASAO		'04/05/10				
MATERIAL NO.		SEE CHART				
SIZE		A3				
WITHIN DIMENSIONS						
GENERAL TOLERANCES (UNLESS SPECIFIED)						
10 UNDER	±0.2					
10 OVER	30 UNDER	±0.25				
30 OVER		±0.3				
ANGULAR	±3 °					
DRAFT WHERE APPLICABLE MUST REMAIN						
DESCRIPTION						
REV	DESCRIPTION					
A	REVISED					
	FC NO. 12005-2295					
	DRW/N:MNABE1					
	CHKD:KTOJO					
	APP:NUKITA					
	2005/03/15					
	2005/03/25					