

THIS COPY IS PROVIDED ON A RESTRICTED BASIS AND IS NOT TO BE USED IN ANY WAY DETRIMENTAL TO THE INTERESTS OF PANDUIT CORP.

PANDUIT PART NUMBER	STUD SIZE	DIMENSIONS in.				
		A ±.03	W ±.01	C ±.02	M ±.03	H ±.01
PV18-6F	#6	.86 (21.8)	.30 (7.6)	.21 (5.3)	.69 (17.5)	.15 (3.8)
PV18-6FN*	#6	.85 (21.6)	.24 (6.1)	.21 (5.3)	.69 (17.5)	.15 (3.8)
PV18-8F	#8	.93 (23.6)	.32 (8.1)	.25 (6.4)	.73 (18.5)	.17 (4.3)
PV18-10F	#10	.93 (23.6)	.35 (8.9)	.25 (6.4)	.75 (19.1)	.20 (5.1)
PV18-10FN*	#10	.93 (23.6)	.31 (7.9)	.25 (6.4)	.75 (19.1)	.20 (5.1)

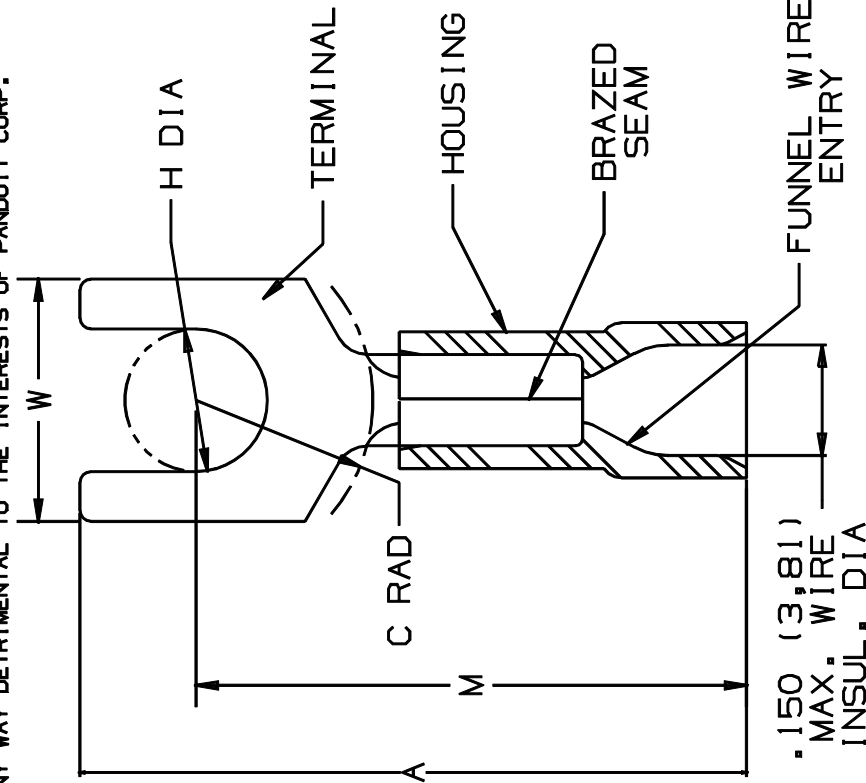
Notes:

1. Used for:

- A. 600 max voltage rating (1000 V. max in signs, fixtures, & luminaries)
- B. #22-16 AWG Solid or stranded copper wire range: 221°F (105°C) max temp rating with CT-1550, CT-1551 installation tools
- C. #22-18 AWG Solid or stranded copper wire range: 167°F (75°C) max temp rating with CT-100 installation tool
- 2. Wire strip length: 5/16 ^{+1/32} -0 (7,9 ^{+0.8} -0)
- 3. Package Quantity (Suffix to basic part no.):
A. Standard -C=100
B. Bulk -M=1000

4. Material:
A. Stamping: .032 (.81) thick tin plated copper
B. Housing: Red vinyl

5. Dimensions in brackets are in millimeters



* PV18-6FN and PV18-10FN are not UL listed or CSA certified.



LISTED 587H E52164
CERTIFIED LR31212

A41194-05

05	1/01	KMD	CAD FILE SPEC. WAS N41194AA_PCD_04				
04	1/00	EJS	MAX. WIRE INSUL DIA WAS .150, REMOVED TOOLS CT-500, CT-950. WIRE GAUGE DIA .150, REMOVED TOOLS CT-500, CT-950. MAX. IN SIGNS, FIXTURES & LUMINARIES, ADDED NOTE "3"	08839			
03	5/99	JKDSKB	ADDED CT-1551 & CT-1550 TOOLS	07634	JW	TRO	
02	1/95	MSRLS	UPDATED NOTES AND DIMENSIONS	02842	LA	TFKE	
01	3/91	DL DL	TANG WIDTH INCREASED PART NO PV18-6F, PV18-8F, PV18-10F		LA	KS	
REV	DATE	BY	DESCRIPTION	ECN #	CUST	PM	



TINLEY PARK, ILLINOIS

2PC. VINYL INSULATED, #22-18 BARREL, FORKS

DRAWN BY: FES
SCALE: NONE
CHECK'D: FS
DRAWING NO.: A41194