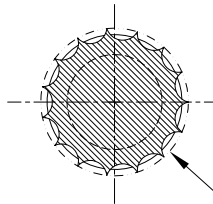
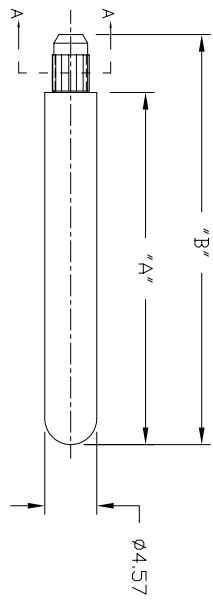


PRODUCT NUMBER	DIMENSIONS	
	"A"	"B"
74748-101	31.00	36.10
74748-102	20.02	25.12

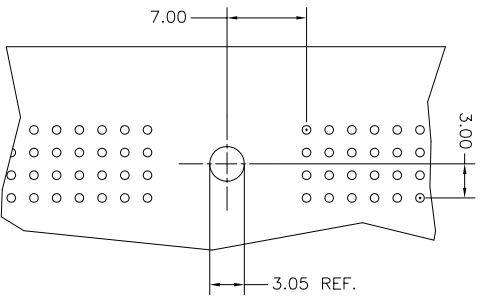


SECTION A - A  
SCALE 4:1

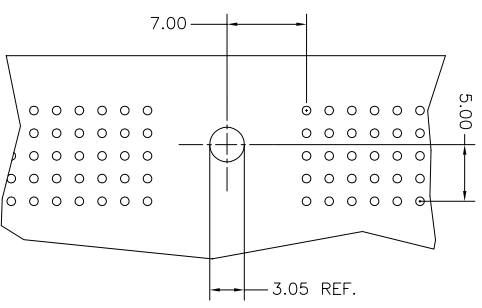


NOTES:

1. MATERIAL: STAINLESS STEEL, TYPE 303. FINISH: PASSIVATED.
2. THIS GUIDE PIN IS INTENDED TO BE INSERTED INTO A 3.05±.08 NONPLATED THROUGH HOLE.
3. SHORT GUIDE PINS TO BE USED WHEN A PCB STIFFENER IS PRESENT ON BOARD.
4. THIS GUIDE PIN IS TO BE USED WITH RECEPTACLE P/N 88917 FOR A 4 ROW APPLICATION, AND P/N 73474 FOR A 5 ROW APPLICATION.
5. PART NUMBERS WITH "LF" SUFFIX AT THE END ARE LEAD FREE OPTION.
6. THIS PRODUCT MEETS EUROPEAN UNION DIRECTIVES AND OTHER COUNTRY REGULATION AS DESCRIBED IN GS-22-008.



RECOMMENDED HOLE PATTERN WHEN STACKED BESIDE A STANDARD 4 MOD METRAL HEADER COMPONENT SIDE



RECOMMENDED HOLE PATTERN WHEN STACKED BESIDE A STANDARD 5 MOD METRAL HEADER COMPONENT SIDE

mat'l. code	surface	tolerance	projection	product family
SEE NOTE 1	ISO 1302	ISO 406	ISO 1101	METRAL ACC
ISO 1101	tolerances unless otherwise specified			
Hr ecn no   dr   date	ISO 1302	ISO 406	ISO 1101	
D   V12721   RPM   11/20/01		.0±.3	MM	title
E   V12733   LSS   12/6/01	angles	.00±.13	MM	PRESS-FIT GUIDE
F   V20703   CGD   04/15/02	linear	.000±.0051	scale 1:1	PIN
G   V21845   TAB   10/15/02	dr			dwg no
H   M06-0059   MHT   2/01/06	engr			74748
J   M06-0277   MHT   7/22/06	chr			Sheet 1 of 1
	pppd C:PENDLETON	4/24/98		size
sheet	revision	J		A3
index	sheet	1		Product Customer Drawing