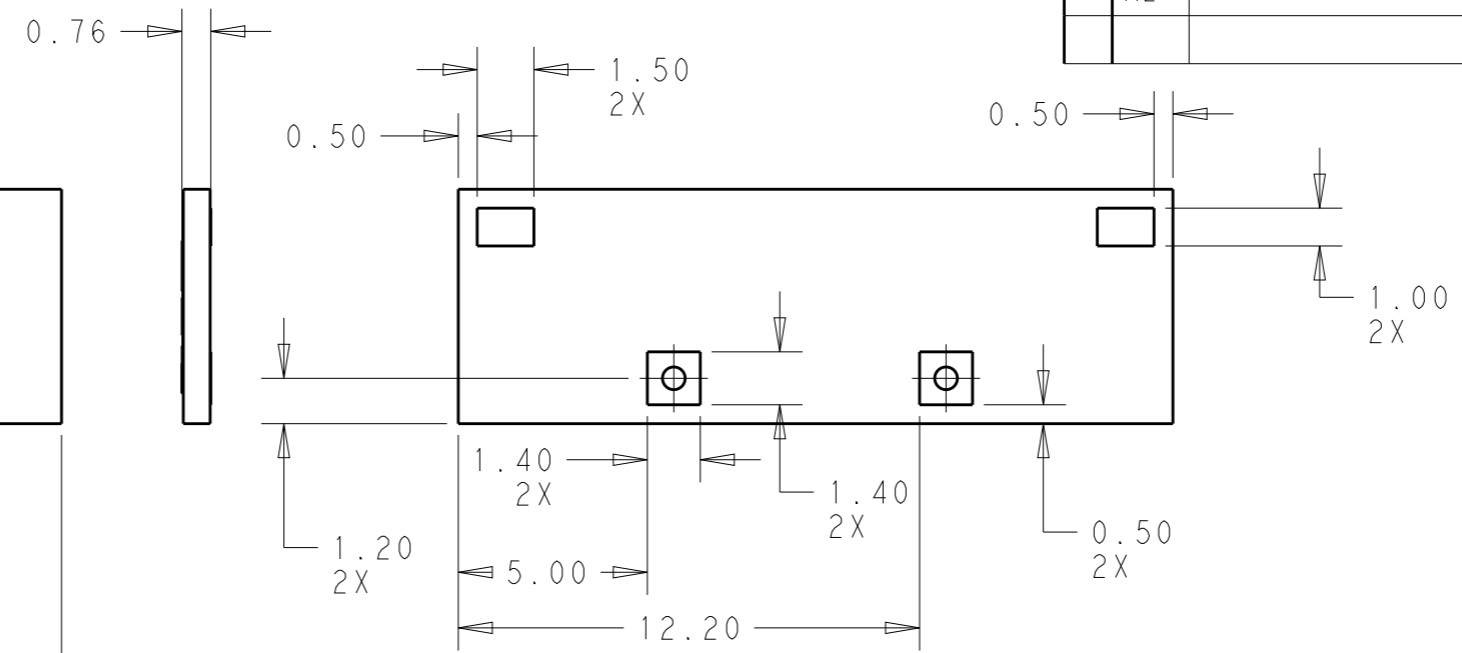
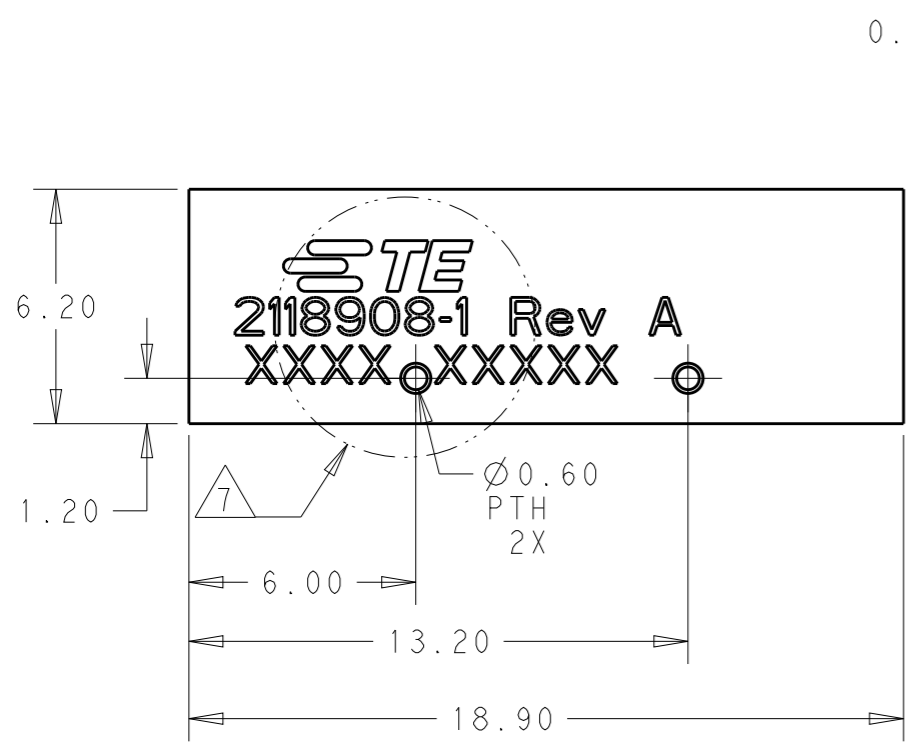


© 2020 TE Connectivity. All Rights Reserved.

REVISIONS


P	LTR	DESCRIPTION	DATE	DWN	APVD
	A	PRODUCTION RELEASE	20MAY2020	SJ	JH
	A1	REVISED PER ECO-20-007130	21MAY2020	SJ	JH
	A2	REV PER ECO-20-007878	05JUN2020	SJ	JH



NOTES: UNLESS OTHERWISE SPECIFIED.

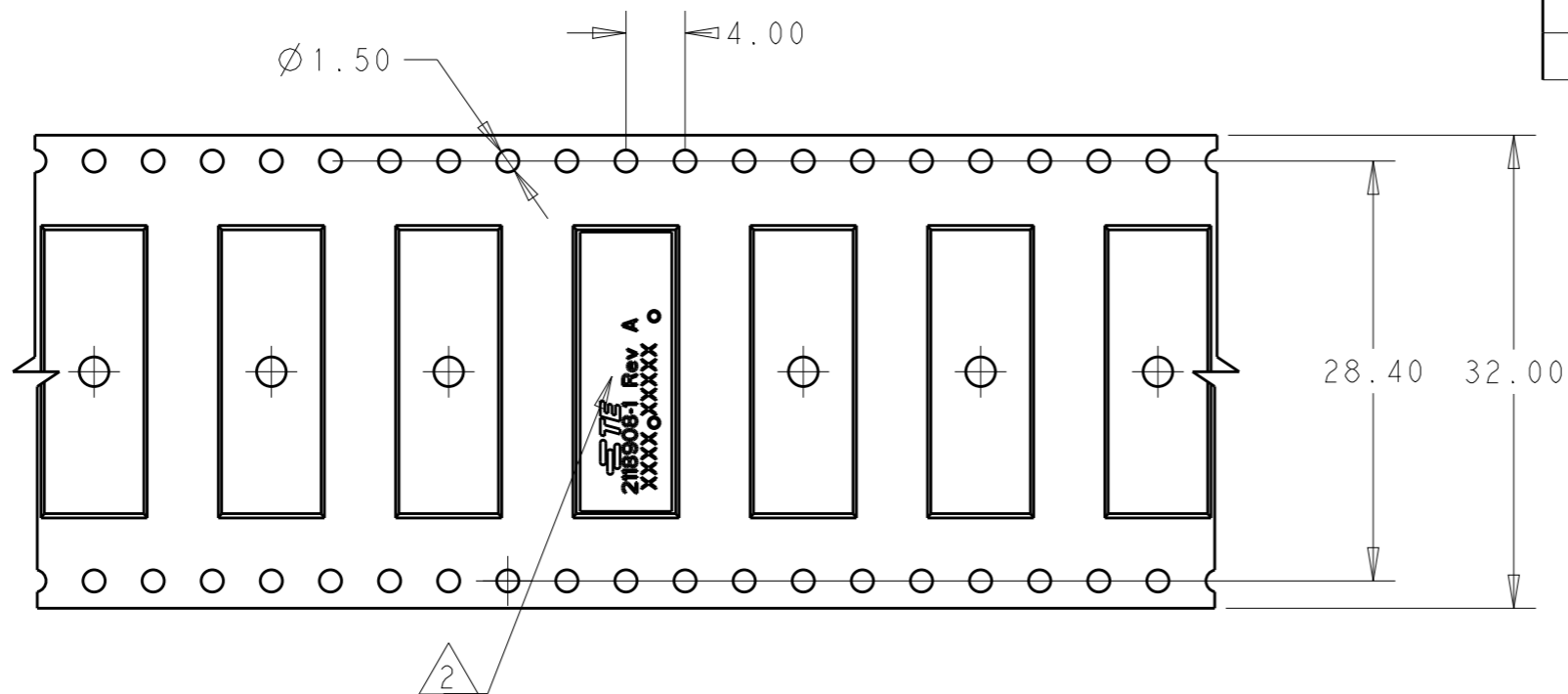
- FABRICATE TO MEET IPC - 6013, CLASS 2. INSPECT TO MEET IPC - A - 600, CLASS 2.
- MATERIAL : FR-4 PCB. THK 0.76
- FINISH:
 - A: SOLDERMASK BOTH SIDES: ORANGE.
 - B: ENIG PLATING.
- GENERAL TOLERANCE : ±0.2.
- PACKAGING: SINGULATED PARTS TO BE SECURELY SHRINK WRAPPED, BAGGED OR VACUUM PACKED IN BULK FOR TAPE AND REEL, SEE SHEET 2.
- CONSULT TE CONNECTIVITY DATA SHEET DS2118908.
- SILKSCREEN; WHITE EPOXY INK.
 - A. TE LOGO, TE P/N
 - B. WORD REV., FOLLOWED BY THE LATEST REVISION LETTER, AS SHOWN.
 - C. 4 DIGIT DATE CODE: FIRST 2 DIGITS FOR THE WEEK CODE AND THE 2ND TWO DIGITS FOR THE YEAR CODE.
 - OTHERS : SPECIFIC TE SOURCE CODE NUMBER DIGITS AS REQUIRED.

BULK PACKAGED	2118908-1
TAPE AND REELED	2118908-2
PACKAGING	PART NUMBER

THIS DRAWING IS A CONTROLLED DOCUMENT.		DWN	SJ.NOH 04DEC2018		 TE Connectivity				
DIMENSIONS: mm		CHK	SJ.NOH 04DEC2018						
TOLERANCES UNLESS OTHERWISE SPECIFIED:		APVD	JH.KIM 04DEC2018						
0 PLC ±- 1 PLC ±- 2 PLC ±- 3 PLC ±- 4 PLC ±- ANGLES ±-		PRODUCT SPEC	-						
MATERIAL		APPLICATION SPEC	-		NAME	PCB, ANTENNA WLAN TRIPLE BAND			
FINISH		WEIGHT	-		SIZE	CAGE CODE	DRAWING NO	RESTRICTED TO	
-		CUSTOMER DRAWING		A3	C=2118908	-			
-		SCALE		5:1	SHEET		1 OF 2	REV	A2

REVISIONS

P	LTR	DESCRIPTION	DATE	DWN	APVD
		SEE SHEET 1			



AS SHOWN P/N : 2118908-2

NOTES:

1. UNLESS OTHERWISE SPECIFIED.

. ORIENT PARTS AS SHOWN

THIS DRAWING IS A CONTROLLED DOCUMENT.		DWN SJ.NOH	04DEC2018	TE Connectivity	
DIMENSIONS: mm		CHK SJ.NOH	04DEC2018		
TOLERANCES UNLESS OTHERWISE SPECIFIED:		APVD JH.KIM	04DEC2018	NAME PCB, ANTENNA WLAN TRIPLE BAND	
0 PLC ±-		PRODUCT SPEC		-	
1 PLC ±-		APPLICATION SPEC		-	
2 PLC ±0.2		WEIGHT		-	
3 PLC ±-		CUSTOMER DRAWING		SCALE 5:1	
4 PLC ±-		FINISH		SHEET 2 OF 2	
ANGLES ±-		-		REV A2	
MATERIAL		-		RESTRICTED TO	
-		-		-	
-		-		-	