

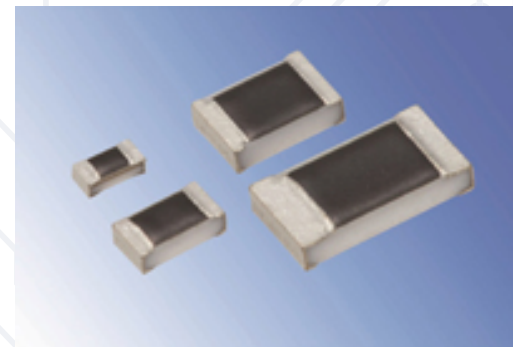
NEW High Reliability, Thin Film Flat Chip Resistor

Features

- NEW High Reliability Thin Film Resistor with Improved electrolytic corrosion resistance
- Excellent heat resistance with an Operational Temp. Range of -55°C ~ +155°C
- Improved Moisture Resistance: 85°C, 85%, 1,000 hours

Technical Information

- Power Rating: 0.063W(0402), 0.1W(0603), 0.125W(0805), 0.25W(1206)
- Tolerance: $\pm 0.05\%$, $\pm 0.1\%$, $\pm 0.25\%$, $\pm 0.5\%$, $\pm 1\%$
- Resistance Range: 10 ~ 1.5M Ω
- Rated Ambient Temperature: 85°C
- T.C.R.: ± 5 , ± 10 , ± 25 , ± 50 , ± 100 ppm/°C



Applications

- Medical Devices
- Industrial Devices

Applications & Ratings

Part Designation	Power Rating @ 85°C	Rated Ambient Temp.	Rated Terminal Part Temp.	T.C.R. (x10 ⁻⁶ /K)	Resistance Range (Ω) E-24, E-96, E-192					Maximum Working Voltage	Maximum Overload Voltage
					(A $\pm 0.05\%$)	(B $\pm 0.1\%$)	(C $\pm 0.25\%$)	(D $\pm 0.5\%$)	(F $\pm 1.0\%$)		
RN73R1E	1/16W (.063W)	85°C	90°C	± 10	—	47 - 10k	47 - 10k	47 - 10k	47 - 10k	50V	100V
				± 25	—	47 - 300k	47 - 300k	47 - 300k	47 - 300k		
				± 50	—	47 - 300k	47 - 300k	10 - 300k	10 - 300k		
RN73R1J	1/10W (.10W)	85°C	95°C	± 5	100 - 59k	100 - 59k	—	—	—	75V	150V
				± 10	47 - 59k	47 - 59k	47 - 59k	47 - 59k	47 - 59k		
				± 25	47 - 59k	15 - 1M	15 - 1M	10 - 1M	10 - 1M		
				± 50	—	15 - 1M	15 - 1M	10 - 1M	10 - 1M		
RN73R2A	1/8W (.125W)	85°C	100°C	± 5	100 - 100k	100 - 100k	—	—	—	150V	300V
				± 10	47 - 100k	47 - 100k	47 - 100k	47 - 100k	47 - 100k		
				± 25	47 - 100k	15 - 1.5M	15 - 1.5M	10 - 1.5M	10 - 1.5M		
				± 50	—	15 - 1.5M	15 - 1.5M	10 - 1.5M	10 - 1.5M		
RN73R2B	1/4W (.25W)	85°C	110°C	± 5	100 - 110k	100 - 110k	—	—	—	200V	400V
				± 10	47 - 110k	47 - 110k	47 - 110k	47 - 110k	47 - 110k		
				± 25	47 - 110k	15 - 1M	15 - 1M	10 - 1M	10 - 1M		
				± 50	—	15 - 1M	15 - 1M	10 - 1M	10 - 1M		
				± 100	—	—	—	10 - 1M	10 - 1M		

Operating Temperature: -55°C to +155°C

Rated voltage = $\sqrt{\text{Power rating} \times \text{resistance value}}$ or max. working voltage, whichever is lower