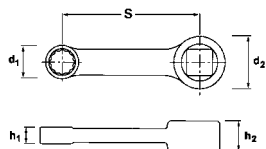


447 **Adaptor**

AS-drive HPQ

Caution! Modified settings on torque wrench (refer to note on page 190), American sizes: SAE AS 954-E, HPQ high performance steel, gunmetal finish.



Code	mm	d ₁ mm	d ₂ mm	h ₁ mm	h ₂ mm	S mm	$\Delta\Delta$ g	
02 18 1007	7	11.5	19	6	11	50.8	30	1
02 18 1008	8	12.4	19	6	11	50.8	30	1
02 18 1009	9	14	19	8	11	50.8	40	1
02 18 1010	10	15.6	19	8	11	50.8	40	1
02 18 1013	13	19.3	19	9.2	11	50.8	55	1

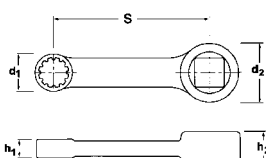
447a **Adaptor**

Code	"	d ₁ mm	d ₂ mm	h ₁ mm	h ₂ mm	S mm	$\Delta\Delta$ g	
02 47 0016	1/4	10.4	19	6	11	50.8	27	1
02 47 0020	5/16	12.4	19	6	11	50.8	29	1
02 47 0024	3/8	14.9	19	8	11	50.8	41	1
02 47 0028	7/16	17	19	8	11	50.8	40	1
02 47 0032	1/2	19	19	9.2	11	50.8	56	1
02 47 0034	9/16	21	19	9.2	11	50.8	61	1
02 47 0036	5/8	23	19	12	11	50.8	73	1

447aSP **Spline-Drive adaptor**

HPQ

Caution! Modified settings on torque wrench (refer to note on page 190), MS-33787, MIL-W-8982, HPQ high performance steel, gunmetal finish.



Code	Spline size	"	d ₁ mm	d ₂ mm	h ₁ mm	h ₂ mm	S mm	$\Delta\Delta$ g	
02 48 0014	7	7/32	9.4	19	6	11	50.8	27	1
02 48 0016	8	1/4	10.4	19	6	11	50.8	27	1
02 48 0018	9	9/32	11.5	19	6	11	50.8	29	1
02 48 0020	10	5/16	12.4	19	6	11	50.8	29	1
02 48 0024	12	3/8	14.9	19	8	11	50.8	40	1
02 48 0028	14	7/16	17	19	9.2	11	50.8	50	1
02 48 0032	16	1/2	19	19	9.2	11	50.8	59	1
02 48 0034	18	9/16	21	19	9.2	11	50.8	55	1
02 48 0036	20	5/8	23	19	12	11	50.8	74	1

45CL **Clip strips**

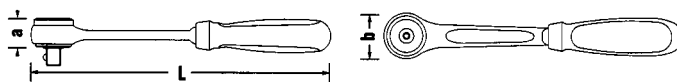
for socket retention, with 9 or 10 retaining clips. Supplied without sockets.



Code	size	L mm	$\Delta\Delta$ g	
80 45 0001	1	200	40	5
80 45 0002	2	300	58	5

Drive tools and accessories

3/8" , finish: Chrome Alloy Steel, chrome plated.


422 **Ratchet**

fine tooth, reversible, 60 teeth, with 2-component handle, for use in confined spaces, re-engages after movement of 6°, DIN 3122/ISO 3315.



Code	L mm	b mm	a mm	$\Delta\Delta$ g	
12 23 10 11	194	32	24	236	1

435 **Ratchet**

reversible, 30 teeth, with 2-component handle, DIN 3122/ISO 3315.



Code	L mm	b mm	a mm	$\Delta\Delta$ g	
12 11 10 10	193	29	17.9	241	5

435QR **QuickRelease ratchet**


reversible, 30 teeth, with QuickRelease safety lock and 2-component handle, DIN 3122/ISO 3315.



Code	L mm	b mm	a mm	$\Delta\Delta$ g	
12 11 00 20	193	29	17.9	244	1

435SG-QR **QuickRelease ratchet**


reversible, 30 teeth, with QuickRelease safety lock and steel handle, DIN 3122/ISO 3315.



Code	L mm	b mm	a mm	$\Delta\Delta$ g	
12 11 00 30	193	29	17.9	275	1

445 Ratchet adaptor

reversible, 20 teeth.



Code	L mm	∅ mm	△△ g	📦
12 140000	53	30	135	1

450* RATCHFIX ratchet

reversing lever near handle, 30 teeth, DIN 3122/ISO 3315.



Code	L mm	b mm	a mm	△△ g	📦
12 150001	196	30	16	249	1

* to be discontinued

452 Flexible joint ratchet

reversible, 60 teeth, handle may be raised or lowered by approx. 90°. Lockable in following positions: straight, 30° up, 60° up, 30° down. Unlocked by depressing button in handle, registered design.



Code	L mm	b mm	a mm	△△ g	📦
12260001	300	34	24	500	1

7350/5 Spare parts set for ratchets No 422, 452

Content: 1 pinion; 1 pawl; 1 switching disk; 1 spring; 3 screws

Code	△△ g	📦
5925 1005	85	1

for ratchets from 12/97

4350 Spare parts set for ratchets No 435, 435SG, 438, 439

Content: 1 pinion; 1 pawl; 1 lever with pin; 1 ball; 2 compression springs; 2 screws

Code	△△ g	📦
19020000	50	1

for ratchets from 1992

4350 QR Spare parts set for ratchets No 435QR, 435SG-QR



Content: 1 pinion; 1 Pawl; 1 lever with pin; 1 ball; 2 compression springs; 2 screws

Code	△△ g	📦
19020020	51	1

421 Speeder brace

working radius 85 mm, DIN 3122/ISO 3315.



Code	L mm	△△ g	📦
12 1000 10	386.5	385	5

453 Speeder brace

with steel handle, for greater axial power transmission, detachable palm head, working radius 85 mm, DIN 3122/ISO 3315.



Code	L mm	△△ g	📦
12 100002	408	619	1

424 Flexible handle

DIN 3122/ISO 3315, with 2-component handle.



Code	L mm	△△ g	📦
1206 10 10	253.5	222	1

425 Sliding T-handle

DIN 3122/ISO 3315.



Code	L mm	△△ g	📦
12070000	165	133	5

425QR QuickRelease sliding T-handle



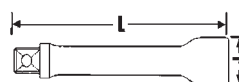
with QuickRelease safety lock.



Code	L mm	△△ g	📦
1207 1000	165	148	1

427 Extensions

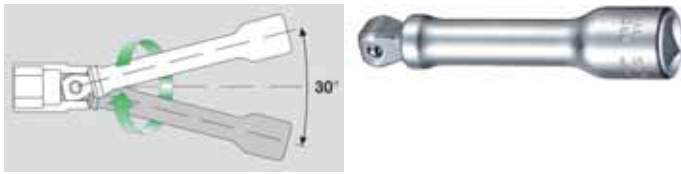
DIN 3123/ISO 3316.



Code	size	L mm	d mm	△△ g	📦
12010005	1.5	38	17	36	5
12010001	3	76	17	67	5
12010006	5	125	17	104	5
12010002	6	160	17	127	5
12010003	10	240	17	188	5
12010004	18	455	17	345	5

427W Extensions with wobble-drive

swivel angle 15° each side, max. torque 80 N m.



Code	size	L mm	d mm	Δ g	☐
12010007	3	76	17	67	5
12010008	5	125	17	104	5
12010009	6	160	17	127	5

427QR QuickRelease extensions



DIN 3123/ISO 3316.



Code	size	L mm	d mm	Δ g	☐
12011001	3	76	17	66	1
12011002	6	160	17	127	1
12011003	10	240	17	185	1

433/1 Locking adaptor

with hexagon key wrench
No 10760aCV 1/8".



Code	L mm	d mm	Δ g	☐
96122701	52	18	57	1

434 Extension, flexible

(right hand rotation only),
maximum torque 7 N m.



Code	L mm	d mm	Δ g	☐
12040000	194	17	109	5

1225 Special extension



Code	L mm	d mm	Δ g	☐
12250001	150	17	128	5

13220 Special extension

for removing Boroscope plugs,
with Boroscope plug locking,
external hexagon size 16 mm.



Code	L mm	Δ g	☐
12270020	355	362	1

428 Universal joint

DIN 3123/ISO 3316.

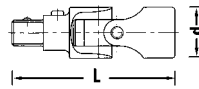


Code	L mm	d mm	Δ g	☐
12020000	46	18.8	55	5

428QR QuickRelease universal joint



DIN 3123/ISO 3316, with QuickRelease safety lock.



Code	L mm	d mm	Δ g	☐
12021000	60	19	66	1

431 Adaptor



3/8" socket x 1/4" plug (10 x 6.3), maximum torque 62 N m,
DIN 3123/ISO 3316, HPQ high performance steel.



Code	L mm	d mm	Δ g	☐
12030001	28	17.2	26	5

432 Adaptor



3/8" socket x 1/2" plug (10 x 12.5), DIN 3123/ISO 3316,
HPQ high performance steel.



Code	L mm	d mm	Δ g	☐
12030003	31	17.2	36	5

409M/432M/514M/3 Set adaptors, 3 pieces

1/4" socket x 3/8" plug,
3/8" socket x 1/2" plug,
1/2" socket x 3/4" plug.



Code	Δ g	☐
96121002	120	1