

**MICRO SWITCH**  
a Honeywell Division

FED. MFG. CODE 91929

**SWITCH-BASIC**

CATALOG LISTING

V3-19M

CK-A1901

CATALOG LISTING  
**V3-19M**  
PAGE 1 OF 1

ISSUE  
**M**  
8

REPLACES  
PR-11069

CHECK

REVISIONS

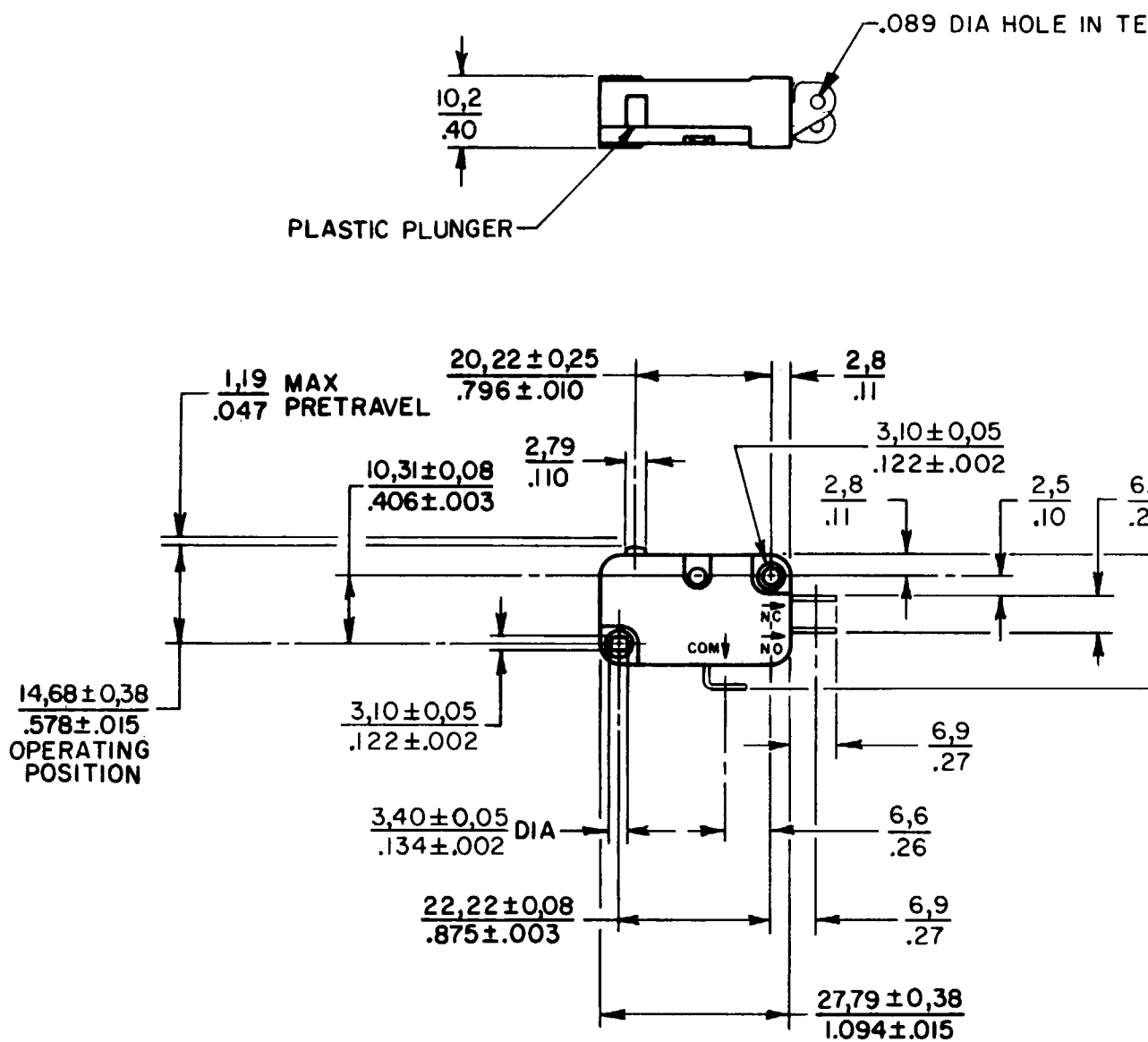
A	CO	82848	
	DCS		15 JUL 96

FORMTEK

DRAWN  
DCS

15 JUL 96

CHECK



THIS DRAWING COVERS A PROPRIETARY ITEM AND IS THE PROPERTY OF MICRO SWITCH, A DIVISION OF HONEYWELL. THIS DRAWING IS NOT TO BE COPIED OR USED WITHOUT THE APPROVAL OF MICRO SWITCH.

**CHARACTERISTICS**

OPERATING FORCE	170 - 398 GR 6 - 14 OZ	MAX
RELEASE FORCE	113 GR 4 OZ	MIN
DIFFERENTIAL TRAVEL	0.15 - 0.41 .006 - .016	
OVERTRAVEL	1.01 .040	MIN
RELEASE TRAVEL	0.18 .007	MIN
FREE POSITION		.625 MAX

**ELECTRICAL DATA**

CONTACT ARRANGEMENT  
**S P D T**

L83 15.1A 1/2HP 125, 250 VAC  
1/2A 125 VDC, 1/4A 250 VDC  
5A 125 VAC "L"

**SCALE FULL**

**DO NOT SCALE PRINT**

**TOLERANCES**

APPLY TO DESIGN UNITS. CONVERSIONS ARE FOR REFERENCE. UNLESS NOTED, TOLERANCES ARE:

DIM.	TOL.	DIM.
mm	mm/in	in
NO PLACES	X, X	1/04
ONE PLACE	X, X, X	0.4/016
TWO PLACES	X, X, X	0.16/008
THREE PLACES	X, X, X, X	X, X, X, X
ANGLES		

DESIGN UNITS  SI METRIC  US CU

RAW MATERIAL - COMMERCIAL STANDARD MICRO SWITCH STANDARDS APPLY. DIMENSIONS ARE TO BE MET BEFORE PROTECTIVE COATINGS ARE APPLIED.

**WEIGHT**

