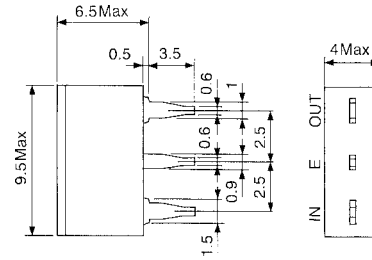


TYPE CFA (CERATUNE®)



Unit: mm

Description

- Unique structure single element AM IF filter
- Center frequency range: 450 — 470kHz
- Bandwidth at 6dB: 13 ± 3 kHz

Features

- Compact, low profile
- High selectivity, suited to a wide range of applications
- Low temperature coefficient
- Low spurious response

Applications

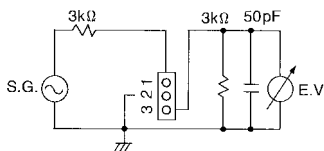
- AM radio-cassettes
- CB transceivers

STANDARD FILTERS SELECTION GUIDE

TYPE CFA

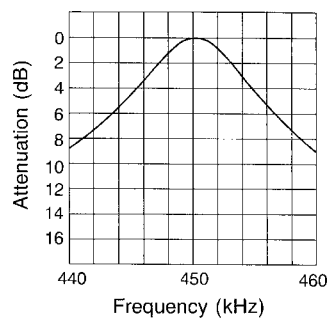
TOKO Part Number	Center Frequency (kHz)	Bandwidth at 6dB (kHz)	Selectivity at $F_o \pm 9$ kHz (dB)	Ripple in Pass Band (dB)	Insertion Loss (dB)	Input/Output Impedance (k Ω)
ACFA-450	450 ± 1.1	13 ± 3.0	6.0 min.	0	5.0 max.	3.0/3.0
BCFA-450	450 ± 2.1	13 ± 3.0	6.0 min.	0	5.0 max.	3.0/3.0
ACFA-455	455 ± 1.1	13 ± 3.0	6.0 min.	0	5.0 max.	3.0/3.0
BCFA-455	455 ± 2.1	13 ± 3.0	6.0 min.	0	5.0 max.	3.0/3.0
ACFA-459	459 ± 1.1	13 ± 3.0	6.0 min.	0	5.0 max.	3.0/3.0
BCFA-459	459 ± 2.1	13 ± 3.0	6.0 min.	0	5.0 max.	3.0/3.0
ACFA-468	468 ± 1.1	13 ± 3.0	6.0 min.	0	5.0 max.	3.0/3.0
BCFA-468	468 ± 2.1	13 ± 3.0	6.0 min.	0	5.0 max.	3.0/3.0
AFCFA-450L02	450.2 ± 2.1	5.0 min.	10.0 min.	0	4.0 max.	3.0/3.0
AFCFA-455L02	455.2 ± 2.1	5.0 min.	10.0 min.	0	4.0 max.	3.0/3.0
AFCFA-459L02	459.2 ± 1.1	5.0 min.	10.0 min.	0	4.0 max.	3.0/3.0

Test Circuit



Frequency Response

ACFA-450



Frequency characteristics

AFCFA-450L02

