

PRODUCT NUMBER

5 3 6 1 1 - X X X - X X X X LF

PLATING

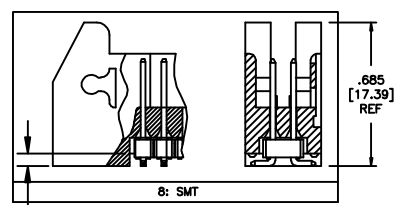
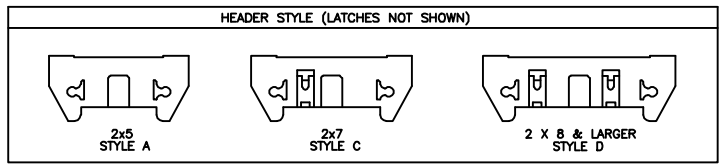
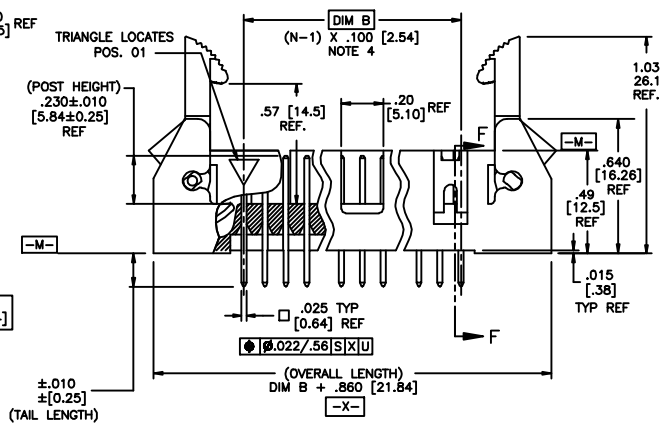
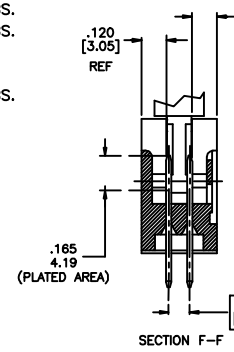
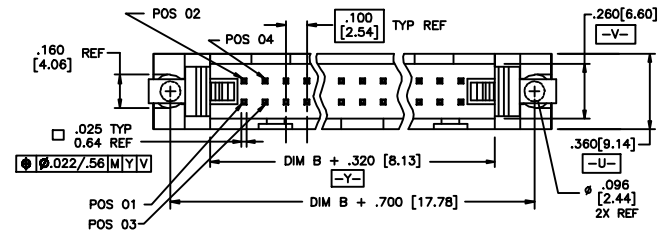
S=15μ [0.38μm] GOLD ON CONTACT AREA (NOTE 12)
100μ [2.54μm] TIN ON TAIL
G=30μ [0.76μm] GOLD (NOTE 12)
ON CONTACT AREA
100μ [2.54μm] PURE TIN ON TAIL

LEAD FREE OPTION
NOTE 9,10
RETENTION
R= RETENTION LEG
NOTE 5
POLARIZATION
NOTE 8

TAIL LENGTH

1	= .085 / 2.16	OBS.
2	= .112 / 2.84	OBS.
4	= .120 / 3.05	
6	= .150 / 3.81	
7	= .675 / 17.15	OBS.
8	= SMT	

DASH NO.	POSITIONS	HEADER STYLE
10	2 X 5	A
14	2 X 7	C
16	2 X 8	D
20	2 X 10	D
26	2 X 13	D
34	2 X 17	D
40	2 X 20	D
50	2 X 25	D



mat'l. code		surface		tolerance		projection		product family	
		ISO 9002		ISO 406		FIRST ANGLE		QUICKIE	
ltr		ecr no		date		tolerances unless otherwise specified		title	
D		VO2309		MEM 9/11/00		angular		.100/2.54cc EJECT LATCH	
E		C10004		MDF 2/26/01		linear		SHOROUNDED VERTICAL HEADER	
F		M05-0089		ERE 5/20/05		0° ± 2'		scale 1:1	
G		M07-0116		AGS 2/19/07		dr		dwg no	
H		M08-0010		MHT 1/11/08		engr		sheet 1 of 2 size	
J		M08-0237		MHT 8/26/08		chr		53611	
K		M08-0273		MHT 9/26/08		appd		A3	
sheet		revision		K		K		type	
index		sheet		1		2		Product Customer Drawing	

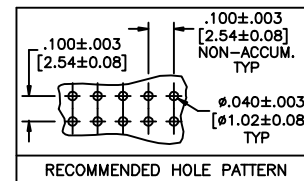
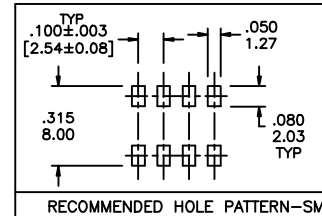


Copyright FCI

NOTES:

- ① HOUSING MAT'L: HIGH TEMPERATURE THERMOPLASTIC. UL94V-0.
COLOR : BLACK
- ② PIN MATERIAL: PHOSPHOR-BRONZE
- ③ 3 LBS/1.36 KG MIN. RETENTION.
- ④ TO DETERMINE DIMENSIONS:
N = NUMBER OF POSITIONS.
EXAMPLE: 10 POS., (N-1) x .100[2.54]=.900[22.87]
- ⑤ RETENTIVE LEG:
RETENTIVE LEG APPLICABLE TO TAIL LENGTH .120/3.05 ONLY.
RETENTION IS APPLIED TO FOUR PINS ON PART SIZES OF 2x14 AND SMALLER,
AND APPLIED TO EIGHT PINS ON PARTS SIZES OF 2x15 AND LARGER.
5LB/2.3KG MAX INSERTION FORCE AND .25LB./1KG MIN RETENTION FORCE
PER RETENTIVE PIN USING .062/1.57 THICK CIRCUIT BOARD AND RECOMMENDED
HOLE PATTERN. RETENTIVE LOCATION AT THE DISCRETION OF THE MANUFACTURER.
OMIT FROM PRODUCT NUMBER IF THIS FEATURE IS NOT APPLICABLE.
- 6. PACKAGED IN TRAYS.
- 7. UNDERPLATING: 50μ"/1.27μm Ni.
- ⑧ FOR POLARIZATION, SPECIFY POSITION NUMBER (i.e.. 03= PIN 3) TO OMIT PIN.
OMIT FROM PRODUCT NUMBER IF THIS FEATURE IS NOT APPLICABLE.
- ⑨ ADD "LF" SUFFIX AT THE END OF PART NUMBER FOR LEAD FREE OPTION.
- ⑩ THIS PRODUCT MEETS EUROPEAN UNION DIRECTIVES AND OTHER
COUNTRY REGULATION AS DESCRIBED IN GS-22-008.
- 11. THE HOUSING WILL WITHSTAND EXPOSURE TO 260°C PEAK TEMPERATURE
FOR 15 SECONDS IN A WAVE SOLDER APPLICATION WITH A 1.5mm
MINIMUM THICK CIRCUIT BOARD. SEE APPLICATION NOTES/PROCEDURES
IF THEY ARE AVAILABLE.

THE HOUSING WILL WITHSTAND EXPOSURE TO 260°C PEAK TEMPERATURE
FOR 20 SECONDS IN A CONVECTION, INFRA-RED OR VAPOR PHASE REFLOW
OVEN. SEE APPLICATION NOTES/PROCEDURES IF THEY ARE AVAILABLE.
- ⑫ PLATING OPTIONS:
MAY BE EITHER GOLD OR GXT PLATED AT MANUFACTURER'S OPTION.



mat'l code		surface ISO 802		tolerance ISO 406 ISO 1101		projection		product family QUICKIE	
ltr	ecn no	dr	date	tolerances unless otherwise specified					
K				angles	linear	XX±.01/XX±0.3 XXX±.005/XXX±0.13 XXXX±.0020/XXXX±0.05		INCH/MM	title
				0°±2'		scale 1:1			.100/2.54cc EJECT LATCH SHOROUNDED VERTICAL HEADER
				dr	D. INGRAM	7/12/99			
				engr	L. GREEN	7/21/99			
				chr	L. GREEN	7/21/99			
				appd	L. GREEN	7/21/99	dwg no 53611 sheet 2 of 2 size A3		
sheet index	revision sheet						type Product Customer Drawing		

FCJ
FCConnect.com

Copyright FCJ

form A3

Mouser Electronics

Authorized Distributor

Click to View Pricing, Inventory, Delivery & Lifecycle Information:

[FCI / Amphenol:](#)

[53611-S50-6](#) [53611-G20-6](#) [53611-S14-8](#) [53611-S20-4LF](#) [53611-S16-4LF](#) [53611-G10-8LF](#) [53611-G20-4LF](#) [53611-G20-6LF](#) [53611-S10-8LF](#) [53611-S50-6LF](#) [53611-G10-4LF](#) [53611-G10-6LF](#) [53611-G14-4LF](#) [53611-G14-8LF](#) [53611-G16-4LF](#) [53611-G16-6LF](#) [53611-G20-8LF](#) [53611-G26-4LF](#) [53611-G26-6LF](#) [53611-G26-8LF](#) [53611-G34-4LF](#) [53611-G34-6LF](#) [53611-G34-8LF](#) [53611-G40-4LF](#) [53611-G40-6LF](#) [53611-G40-8LF](#) [53611-G50-4LF](#) [53611-G50-6LF](#) [53611-G50-8LF](#) [53611-S10-402LF](#) [53611-S10-6LF](#) [53611-S14-6LF](#) [53611-S16-6LF](#) [53611-S16-8LF](#) [53611-S20-6LF](#) [53611-S20-8LF](#) [53611-S26-6LF](#) [53611-S26-8LF](#) [53611-S34-4LF](#) [53611-S34-6LF](#) [53611-S34-8LF](#) [53611-S40-4LF](#) [53611-S40-6LF](#) [53611-S50-4LF](#) [53611-S16-4](#) [53611-S14-4LF](#) [53611-S26-4LF](#) [53611-S10-4LF](#) [53611-G14-8](#) [53611-G26-4](#) [53611-G50-6](#) [53611-S50-8](#) [53611-S40-420](#) [53611-S40-820LF](#) [53611-S14-4RLF](#) [53611-S34-4RLF](#) [53611-S40-4RLF](#)