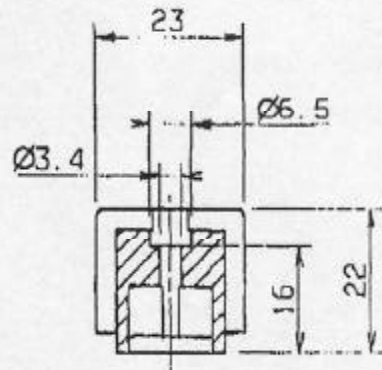
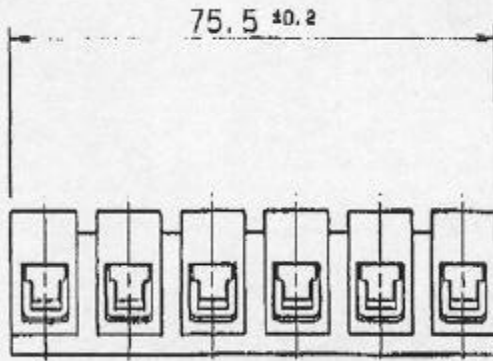
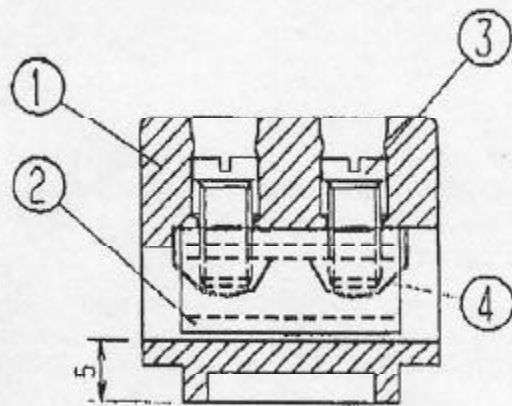
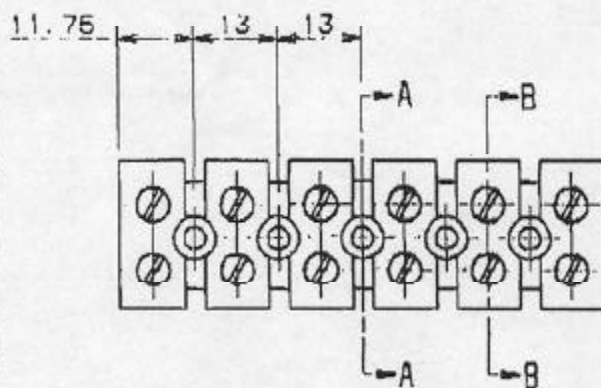


DIÉ ENGLISCHE VERSIE IS VERBINLIK
THE ENGLISH VERSION IS BINDING



SECTION / SCHNITT 'A'-'A'



SECTION / SCHNITT 'B'-'B'

REFERENCE PURPOSE ONLY
UNCONTROLLED COPY

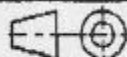
SEE STOCKLIST :- 423928
SIEHE STUCLISTE :- 423928

BLE / BLAU	①	MK6/5	①	062017	①
BLE / BLAU		MK6/3		062037	
COLOR		TYPE		PART No.	
FREE		TYP		TEILE N°.	

DATA ON LABEL:

300V 40A
AVG 22 10

CE



SCALE: 1:1 2:1

DATE

APPROVED

①		
②		
③	CHANGE NOTE NO. 04	11/27/95
MODIFICATION		

Weldmüller

CAT. NO.: SEE LABEL

4 23884

FORMING NO. 10000 NO. 10000
SHEET. 1 OF 1 SHEETS

MK6/... NON-BASEEFA

POST-ZEICHNUNG
GENERAL ASSEMBLY DRAWING

PRODUCT FILE: MK6

UK

L

ENEC-TESTEN ENK-31N-11-RECHTEN
 PROTECTA REMARK TO DIA 11 MUST BE OBSERVED