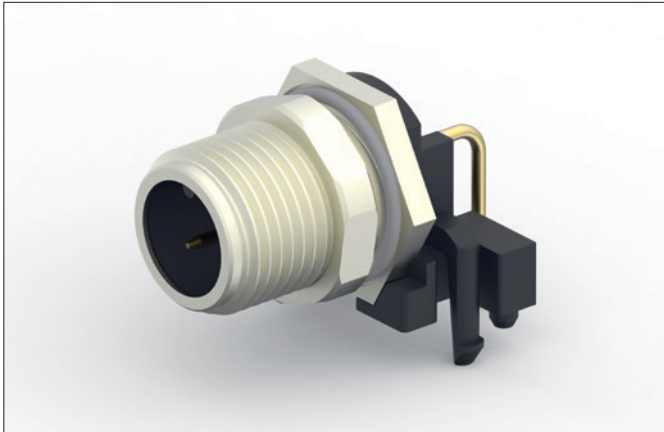


M8/M12 Panel Mount and PCB Connectors



TE Connectivity (TE)'s M8/M12 Panel Mount connectors are designed for safe and reliable communication. With a broad portfolio and many configurations, the M8/M12 Panel mount product range offers maximum design flexibility and cost-efficiency. For PCB boards.

As part of TE Connectivity's extensive range of connectors, the M8/M12 connector system helps to establish safe, reliable and efficient communication in nearly all industrial environments.

KEY FEATURES

- Right angle connector
- IP67 rated for harsh industrial environments
- Available in male and female
- Available in shielded and unshielded versions
- Gold plated
- 2-5 pos.
- A/B/D code

BENEFITS

- Maximum design flexibility for PCBs: broad portfolio and many configurations
- Cost-effective: ruggedized for use in harsh industrial environments
- Short lead-times: accelerate your Go-To-Market time
- Time-saving: field-installable
- Performance-enhancing: extending the lifetime and durability of equipment

APPLICATIONS

- Industrial automation
- Automobile manufacturing
- Machine tools
- Semiconductor manufacturing
- Factory automation machines
- Manufacturing of solenoid and sensor valves
- Vision systems

ELECTRICAL

- IEC61076-2-101
- IEC61076-2-104

MECHANICAL

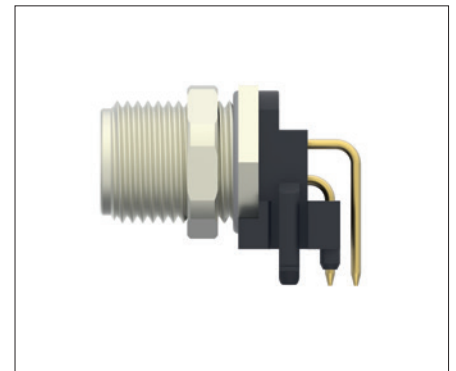
- IEC61076-2-101
- IEC61076-2-104

STANDARDS & SPECIFICATIONS

- IEC61076-2-101
- IEC61076-2-104

PRODUCT COMPLIANCE/APPROVALS

- RoHS
- REACH



M8/M12 Panel Mount and PCB Connectors

ORDERING INFORMATION - M8 CONNECTORS

Description	TE PN
M8.FMLE.PNLREAR.3POS.STR PCB	T4041017031-000
M8.MLE.PNLREAR.3POS.STR WIRE	T4070014031-001
M8.MLE.PNLFRONT.3POS.STR	T4032014031-000
M8.FMLE.PNLFRONT.4POS.STR	T4033014041-000
M8.MLE.PNLREAR.4POS.STR PCBSHLD	T4040034041-000
M8.FMLE.PNLREAR.3POS.STR PCBSHLD	T4041037031-000
M8.MLE.PNLREAR.4POS.STR WIRE	T4070014041-001
M8.FMLE.PNLFRONT.3POS.STR WIRE	T4073014031-001
M8.MLE.PNLREAR.3POS.STR PCBSHLD	T4040034031-000
M8.FMLE.PNLREAR.4POS.STR PCBSHLD	T4041037041-000
M8.MLE.PNLFRONT.4POS.STR.PCB	T4042014041-000
M8.FMLE.PNLREAR.3POS.STR WIRE	T4071017031-001
M8.FMLE.PNLREAR.3POS.STR	T4031017031-000
M8.MLE.PNLFRONT.4POS.STR.	T4032014041-000
M8 Y DISTRIBUTOR MALE 4POS	T4081122004-000
M8 T DISTRIBUTOR MALE 4POS	T4082102004-000
M8 T DISTRIBUTOR MALE 3POS	T4082102003-000
M8 Y DISTRIBUTOR MALE 3POS	T408112003-000

Description	TE PN
M8.MLE.PNLFRONT.3POS.STR PCB	T4042014031-000
M8.FMLE.PNLREAR.4POS.STR PCB	T4041017041-000
M8.FMLE.PNLFRONT.4POS.STRPCB	T4043014041-000
M8.MLE.PNLFRONT.4POS.STR WIRE	T4072014041-001
M8.MLE.PNLREAR.3POS.STR	T4030014031-000
M8.MLE.PNLREAR.4POS.STR.	T4030014041-000
M8.FMLE.PNLFRONT.3POS.STRPCB	T4043014031-000
M8.FMLE.PNLFRONT.4POS.STR WIRE	T4073014041-001
M8.FMLE.PNLREAR.4POS.STR	T4031017041-000
M8.FMLE.PNLFRONT.3POS.STR	T4033014031-000
M8.FMLE.PNLREAR.4POS.STR WIRE	T4071017041-001
M8.MLE.PNLREAR.3POS.STR PCB	T4040014031-000
M8.MLE.PNLREAR.4POS.STR PCB	T4040014041-000
M8.MLE.PNLFRONT.3POS.STR WIRE	T4072014031-001

Please visit [te.com](https://www.te.com) to explore our complete M8/M12 Panel Mount and PCB Connector portfolio.

ORDERING INFORMATION - M12 CONNECTORS

Description	TE PN
M12,REAR MOUNT,MALE,A,4P,SOLDER WIRE	T4130012041-000
M12,REAR MOUNT,MALE,A,5P,SOLDER WIRE	T4130012051-000
M12,REAR MOUNT,MALE,B,5P,SOLDER WIRE	T4130412051-000
M12,REAR MOUNT,MALE,D,4P,SOLDER WIRE	T4130512041-000
M12,REAR MOUNT,FEMALE,A,4P,SOLDER WIRE	T4131012041-000
M12,REAR MOUNT,FEMALE,A,5P,SOLDER WIRE	T4131012051-000
M12,REAR MOUNT,FEMALE,B,5P,SOLDER WIRE	T4131412051-000
M12,REAR MOUNT,FEMALE,D,4P,SOLDER WIRE	T4131512041-000
M12,REAR MOUNTING,MALE,A CODE,4P	T4140012041-000
M12,REAR MOUNTING,MALE,A CODE,5P	T4140012051-000
M12,REAR MOUNTING,MALE,B CODE,5P	T4140412051-000

Description	TE PN
M12 R/A F PNLREAR STAMPED PIN A-CODE 4P	T4145015041-001
M12 R/A F PNLREAR STAMPED PIN A-CODE 5P	T4145015051-001
M12 R/A F PNLREAR STAMPED PIN B-CODE 5P	T4145415051-001
M12 R/A F PNL STAMPED PIN D-CODE 4P SHLD	T4145535041-001
M12,REAR MOUNTING,MALE,A,4P,0.2M WIRE	T4171010004-001
M12,REAR MOUNTING,MALE,A,4P,0.5M WIRE	T4171010004-002
M12,REAR MOUNTING,MALE,A,5P,0.2M WIRE	T4171010005-001
M12,REAR MOUNTING,MALE,A,5P,0.5M WIRE	T4171010005-002
M12,REAR MOUNTING,MALE,B,5P,0.2M WIRE	T4171010405-001
M12,REAR MOUNTING,MALE,B,5P,0.5M WIRE	T4171010405-002
M12,REAR MOUNTING,MALE,D,4P,0.2M WIRE	T4171010504-001

M8/M12 Panel Mount and PCB Connectors

ORDERING INFORMATION - M12 CONNECTORS (CONTINUED)

Description	TE PN	Description	TE PN
M12,REAR MOUNTING,MALE,D CODE,4P	T4140512041-000	M12,REAR MOUNTING,MALE,D,4P,0.5M WIRE	T4171010504-002
M12,REAR MOUNTING,FEMALE,A CODE,4P	T4141012041-000	M12,REAR MOUNTING,FEMALE,A,4P,0.2M WIRE	T4171110004-001
M12,REAR MOUNTING,FEMALE,A CODE,5P	T4141012051-000	M12,REAR MOUNTING,FEMALE,A,4P,0.5M WIRE	T4171110004-002
M12,REAR MOUNTING,FEMALE,B CODE,5P	T4141412051-000	M12,REAR MOUNTING,FEMALE,A,5P,0.2M WIRE	T4171110005-001
M12,REAR MOUNTING,FEMALE,D CODE,4P	T4141512041-000	M12,REAR MOUNTING,FEMALE,A,5P,0.5M WIRE	T4171110005-002
		M12,REAR MOUNTING,FEMALE,B,5P,0.2M WIRE	T4171110405-001
		M12,REAR MOUNTING,FEMALE,B,5P,0.5M WIRE	T4171110405-002
		M12,REAR MOUNTING,FEMALE,D,4P,0.2M WIRE	T4171110504-001
		M12,REAR MOUNTING,FEMALE,D,4P,0.5M WIRE	T4171110504-002

Please visit te.com to explore our complete M8/M12 Panel Mount and PCB Connector portfolio.

te.com/m8m12

TE Connectivity, TE Connectivity (logo) and Every Connection Counts are trademarks. All other logos, products and/or company names referred to herein might be trademarks of their respective owners.

The information given herein, including drawings, illustrations and schematics which are intended for illustration purposes only, is believed to be reliable. However, TE Connectivity makes no warranties as to its accuracy or completeness and disclaims any liability in connection with its use. TE Connectivity's obligations shall only be as set forth in TE Connectivity's Standard Terms and Conditions of Sale for this product and in no case will TE Connectivity be liable for any incidental, indirect or consequential damages arising out of the sale, resale, use or misuse of the product. Users of TE Connectivity products should make their own evaluation to determine the suitability of each such product for the specific application.

© 2017 TE Connectivity Ltd. family of companies All Rights Reserved.

1-1773936-9 09/2017 Original: WR

PRODUCT SHEET

TE Connectivity Automation & Control

Pfnorstr. 1
D-64293 Darmstadt
Germany

+49 6151 607 1999

www.te.com

LEGAL ENTITY

Mouser Electronics

Authorized Distributor

Click to View Pricing, Inventory, Delivery & Lifecycle Information:

TE Connectivity:

<u>T4081112003-000</u>	<u>T4040034041-000</u>	<u>T4171110504-002</u>	<u>T4141412051-000</u>	<u>T4171010004-002</u>	<u>T4171010504-001</u>
<u>T4033014031-000</u>	<u>T4071017041-001</u>	<u>T4171010005-001</u>	<u>T4171110405-001</u>	<u>T4171110005-002</u>	<u>T4131012051-000</u>
<u>T4171010405-002</u>	<u>T4041037041-000</u>	<u>T4070014041-001</u>	<u>T4145015051-001</u>	<u>T4145415051-001</u>	<u>T4032014041-000</u>
<u>T4043014041-000</u>	<u>T4140512041-000</u>	<u>T4041017031-000</u>	<u>T4073014031-001</u>	<u>T4145015041-001</u>	<u>T4041017041-000</u>
<u>T4171010005-002</u>	<u>T4072014031-001</u>	<u>T4040034031-000</u>	<u>T4030014031-000</u>	<u>T4130412051-000</u>	<u>T4171110405-002</u>
<u>T4130512041-000</u>	<u>T4171010405-001</u>	<u>T4042014041-000</u>	<u>T4071017031-001</u>	<u>T4140412051-000</u>	<u>T4171010004-001</u>
<u>T4171010504-002</u>	<u>T4042014031-000</u>	<u>T4040014031-000</u>	<u>T4082102004-000</u>	<u>T4082102003-000</u>	<u>T4171110504-001</u>
<u>T4070014031-001</u>	<u>T4040014041-000</u>	<u>T4030014041-000</u>	<u>T4171110004-002</u>	<u>T4073014041-001</u>	<u>T4031017031-000</u>
<u>T4041037031-000</u>	<u>T4033014041-000</u>	<u>T4131412051-000</u>	<u>T4032014031-000</u>	<u>T4072014041-001</u>	<u>T4145535041-001</u>
<u>T4043014031-000</u>	<u>T4031017041-000</u>	<u>T4081122004-000</u>	<u>T4171110004-001</u>	<u>T4171110005-001</u>	