

RoHS Compliant

Specifications

| | |
|--------------------|--------------------------|
| Electrical Ratings | 25mA @ 50VDC |
| Electrical Life | 1,000,000 cycles typical |
| Contact Resistance | <25mΩ initial |
| Actuation Force | 150 ± 50gF |

| | |
|-----------------------|---------------|
| Dielectric Strength | 1500Vrms min |
| Insulation Resistance | >100MΩ min |
| Operating Temperature | -40°C to 85°C |
| Storage Temperature | -40°C to 85°C |

Materials

| | |
|-----------|---------------------------------------|
| Cap | ABS |
| Housing | 6/6 Nylon |
| Contacts | Copper Alloy, Gold over Nickel Plated |
| Terminals | Copper Alloy, Silver Plated |

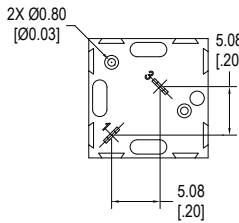
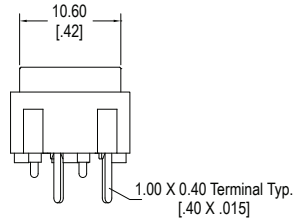
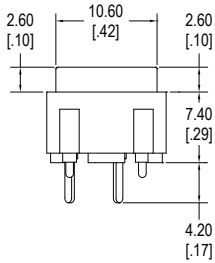
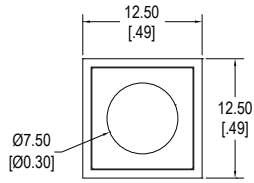
Ordering Information

| | | | |
|----------------|----------------|---|---|
| 1. Series | NC | A | 3 |
| NC | | | |
| 2. Cover Style | | | |
| A | | | |
| B | | | |
| C | | | |
| D | | | |
| E | | | |
| F | | | |
| 3. Cover Color | | | |
| 1 = White | 6 = Orange | | |
| 2 = Black | 7 = Blue | | |
| 3 = Red | 8 = Dark Gray | | |
| 4 = Yellow | 9 = Light Gray | | |
| 5 = Green | | | |
| 4. Caps | | Cap Colors | |
| Blank = No Cap | C16 | | |
| C11 | C17* | ** See cap options for color availability | |
| C12 | C18 | ** Caps available with C & E actuators only | |
| C13 | C19 | * C15 & C17 fit only E Actuator | |
| C14 | C22 | | |
| C15* | C26 | | |

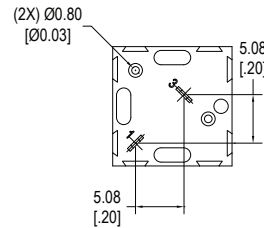
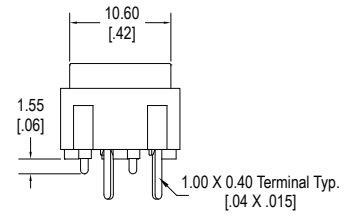
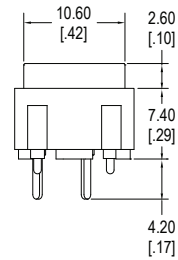
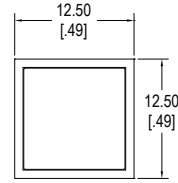
NC

Miniature Pushbutton

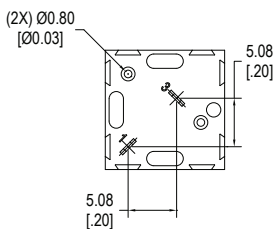
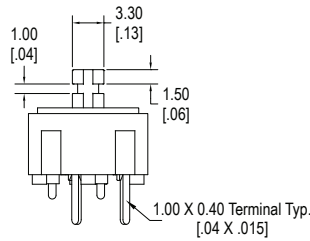
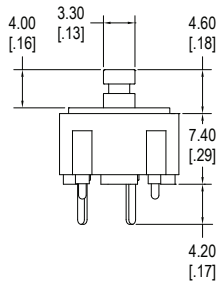
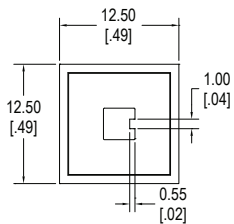
Dimensions



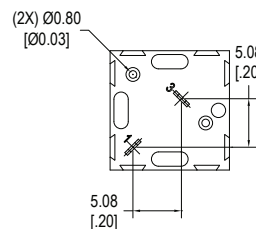
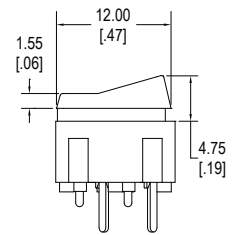
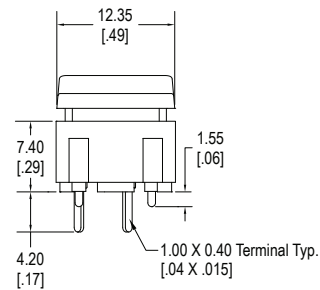
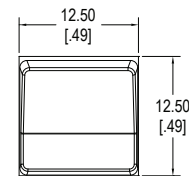
A Style Cover



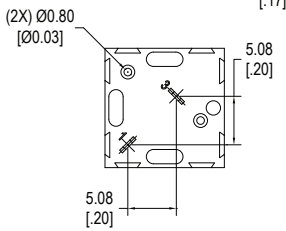
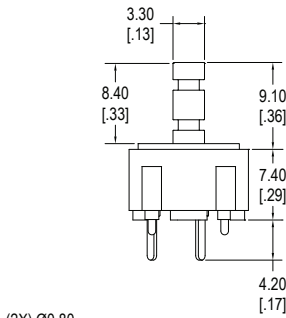
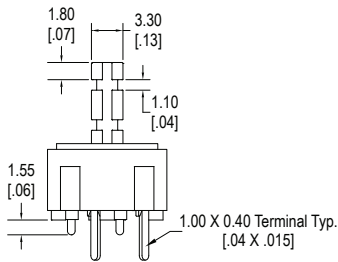
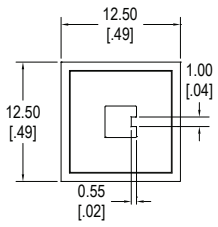
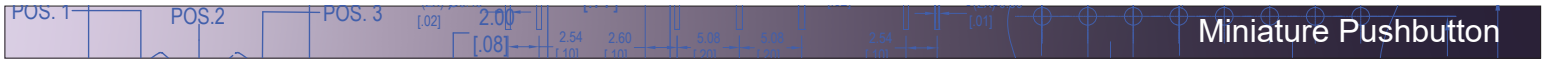
B Style Cover



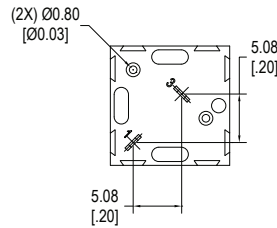
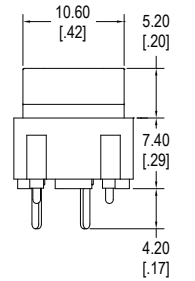
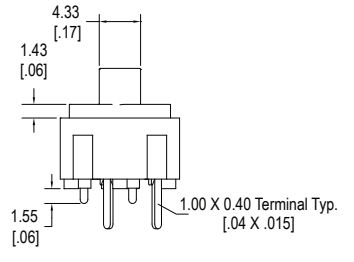
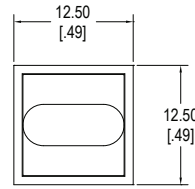
C Style Cover



D Style Cover

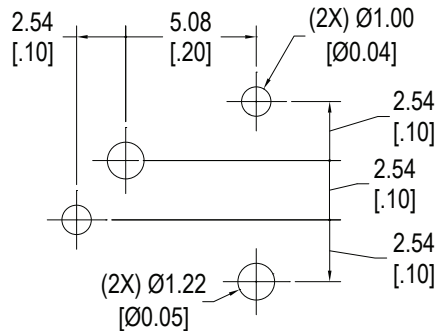
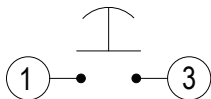


E Style

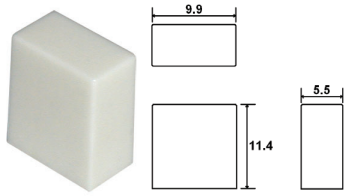


F Style

Schematic & PC Layout

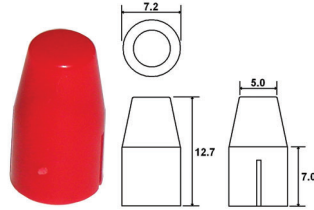


Cap Options for C & E Cover Styles



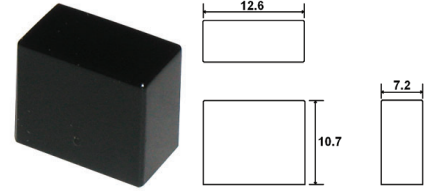
C11_

1 = White, 2 = Black, 3 = Red, 9 = Light Gray
Contact Factory for other available colors



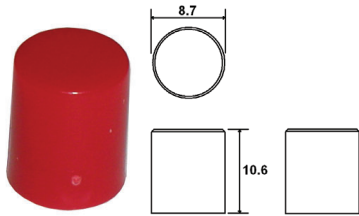
C12_

1 = White, 2 = Black, 3 = Red, 9 = Light Gray
Contact Factory for other available colors



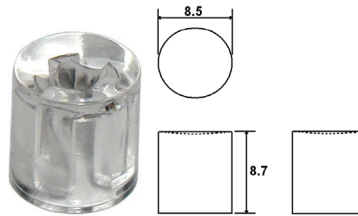
C13_

1 = White, 2 = Black, 3 = Red, 9 = Light Gray
Contact Factory for other available colors



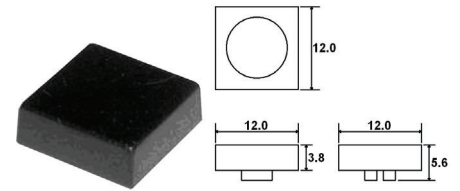
C14_

1 = White, 2 = Black, 3 = Red, 9 = Light Gray
Contact Factory for other available colors



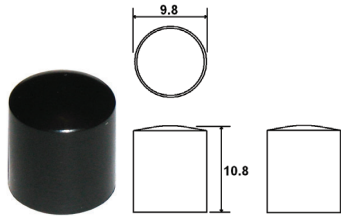
C15_

2 = Black, 0 = Clear
Contact Factory for other available colors



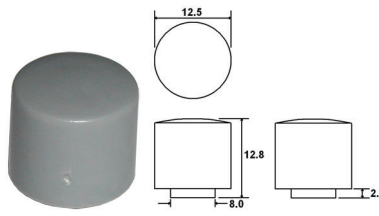
C16_

1 = White, 2 = Black, 3 = Red, 7 = Blue
Contact Factory for other available colors



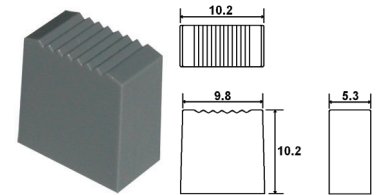
C17_

2 = Black, 0 = Clear
Contact Factory for other available colors



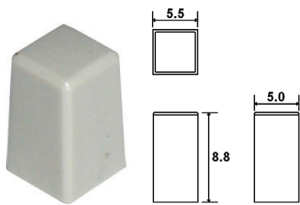
C18_

1 = White, 2 = Black, 9 = Light Gray
Contact Factory for other available colors



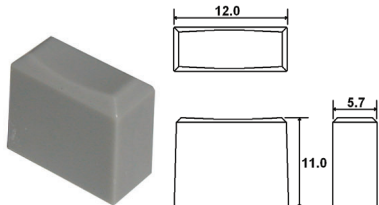
C19_

1 = White, 2 = Black, 3 = Red, 8 = Dark Gray
Contact Factory for other available colors



C22_

2 = Black, 8 = Dark Gray, 9 = Light Gray
Contact Factory for other available colors



C26_

1 = White, 2 = Black, 3 = Red, 9 = Light Gray
Contact Factory for other available colors