



## Micro-D MWDM-BS Vertical Mount Thru-Hole Printed Circuit Board Connectors



**High Performance** – These connectors feature gold-plated TwistPin contacts for best performance. PC tails are .020 inch diameter. Specify nickel-plated shells or cadmium plated shells for best availability.

**Solder-Dipped** – Terminals are coated with Sn60/Pb40 tin-lead solder for best solderability. Optional gold-plated terminals are available for RoHS compliance.

**Rear Mountable** – Can be installed through panels up to .125 inch thick. Specify rear panel mount jackposts.

### How To Order BS Vertical Style PCB Micro-D Connectors

Sample Part Number	MWDM	1	L	-15	P	BS	R3	T	-.110	513	
Series	MWDM Glenair Micro-D										
Shell Material and Finish	Aluminum Shell		Stainless Steel Shell								
	1 - Cadmium		2 - Nickel		3 - Passivated						
	4 - Black Anodize										
	5 - Gold		6 - Chem Film								
Insulator Material	L - LCP or PPS										
	LCP - 30% Glass-filled liquid crystal polymer										
	PPS - 40% Glass-filled polyphenylene sulfide										
Contact Layout	9, 15, 21, 25, 31, 37, 51, 100 (See Table II)										
Contact Type	P - Pin S - Socket										
Termination Type	BS - Board Straight										
Jackpost Option	Omit - None		P - Jackpost		Jackposts for Rear Panel Mounting						
	(See Table I)				R1 - .032" Panel		R2 - .047" Panel		R3 - .062" Panel		
					R4 - .093" Panel		R5 - .125" Panel		R6 - .080" Panel		
Threaded Insert Option	T - Threaded Insert In Board Mount Hole					Omit - for Thru-Hole					
Terminal Length in Inches	.080, .110, .125, .140, .150, .172, .190, .250 Length in Inches $\pm$ .015 (0.38) (See Table II)										
Gold-Plated Terminal Mod Code	These connectors are solder-dipped in 60/40 tin-lead solder. To delete the solder dip and change to gold-plated terminals, add code 513										

Table I: Jackpost Options

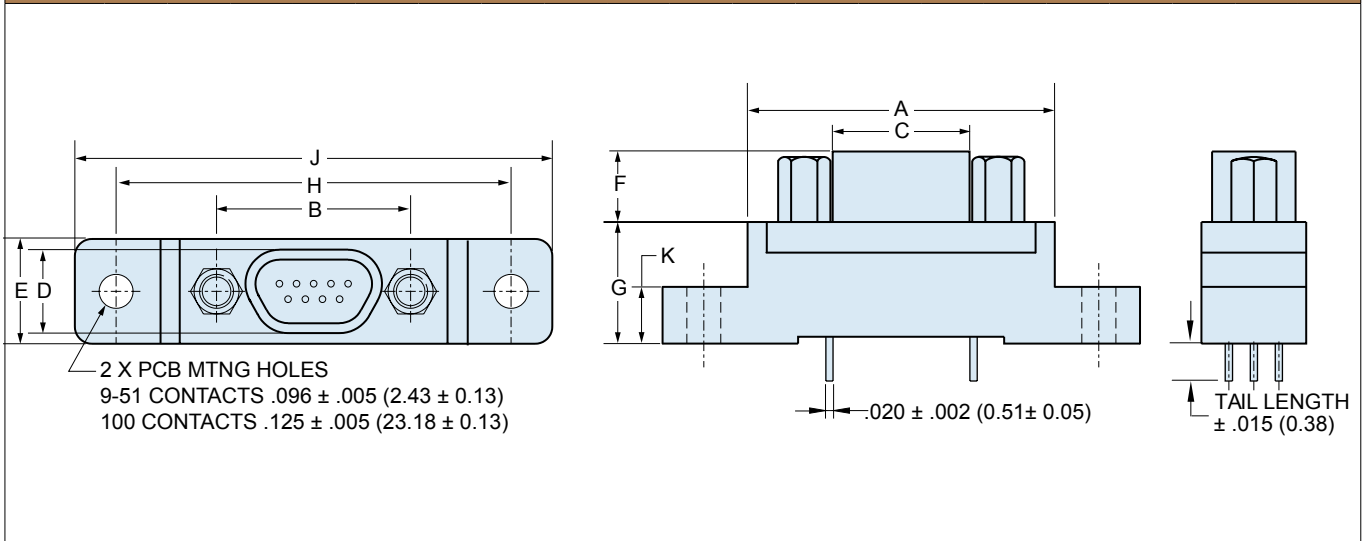
No Designator	P	R1 Thru R6
<p>THREADED INSERT</p>		<p>Panel</p>
<p>Thru-Hole</p> <p>For use with Glenair jackposts only. Order hardware separately. Install with threadlocking compound.</p>	<p>Standard Jackpost</p> <p>Factory installed, not intended for removal.</p>	<p>Jackpost for Rear Panel Mounting</p> <p>Shipped loosely installed. Install with permanent threadlocking compound.</p>

# Micro-D MWDM-BS Vertical Mount Thru-Hole Printed Circuit Board Connectors



Micro-D PCB

Table II: Dimensions



Layout	A Max.		B		C Max.		D Max.		E Max.		F		G		H		J Max.		K	
	In.	mm.	In. ±.003	mm. ± 0.08	In.	mm.	In.	mm.	In.	mm.	In. ±.004	mm. ±0.10	In. ±.010	mm. ±0.25	In. ±.007	mm. ±0.18	In.	mm.	In. ±.010	mm. ±0.25
9P	.790	20.07	.565	14.35	.333	8.46	.184	4.67	.310	7.87	.183	4.65	.333	8.46	1.150	29.21	1.390	35.31	.155	3.94
9S	.790	20.07	.565	14.35	.400	10.16	.250	6.35	.310	7.87	.195	4.95	.333	8.46	1.150	29.21	1.390	35.31	.155	3.94
15P	.940	23.88	.715	18.16	.483	12.27	.184	4.67	.310	7.87	.183	4.65	.333	8.46	1.150	29.21	1.390	35.31	.155	3.94
15S	.940	23.88	.715	18.16	.551	14.00	.250	6.35	.310	7.87	.195	4.95	.333	8.46	1.150	29.21	1.390	35.31	.155	3.94
21P	1.180	29.97	.865	21.97	.633	16.08	.184	4.67	.310	7.87	.183	4.65	.333	8.46	1.450	36.83	1.690	42.93	.155	3.94
21S	1.180	29.97	.865	21.97	.701	17.81	.250	6.35	.310	7.87	.195	4.95	.333	8.46	1.450	36.83	1.690	42.93	.155	3.94
25P	1.275	32.39	.965	24.51	.733	18.62	.184	4.67	.310	7.87	.183	4.65	.333	8.46	1.500	38.10	1.740	44.20	.155	3.94
25S	1.275	32.39	.965	24.51	.801	20.35	.250	6.35	.310	7.87	.195	4.95	.333	8.46	1.500	38.10	1.740	44.20	.155	3.94
31P	1.575	40.01	1.115	28.32	.883	22.43	.184	4.67	.310	7.87	.183	4.65	.333	8.46	1.800	45.72	2.040	51.82	.155	3.94
31S	1.575	40.01	1.115	28.32	.951	24.16	.250	6.35	.310	7.87	.195	4.95	.333	8.46	1.800	45.72	2.040	51.82	.155	3.94
37P	1.875	47.63	1.265	32.13	1.033	26.24	.184	4.67	.310	7.87	.183	4.65	.333	8.46	2.100	53.34	2.340	59.44	.155	3.94
37S	1.875	47.63	1.265	32.13	1.101	27.96	.250	6.35	.310	7.87	.195	4.95	.333	8.46	2.100	53.34	2.340	59.44	.155	3.94
51P	1.775	45.09	1.215	30.86	.983	24.97	.228	5.79	.351	8.92	.183	4.65	.333	8.46	2.000	50.80	2.270	57.64	.155	3.94
51S	1.775	45.09	1.215	30.86	1.051	26.70	.296	7.52	.351	8.92	.195	4.95	.333	8.46	2.000	50.80	2.270	57.64	.155	3.94
100P	2.585	65.66	1.800	45.72	1.383	35.13	.270	6.86	.460	11.68	.183	4.65	.525	13.34	2.800	71.12	3.250	82.55	.293	7.44
100S	2.585	65.66	1.800	45.72	1.451	36.86	.333	8.46	.460	11.68	.195	4.95	.525	13.34	2.800	71.12	3.250	82.55	.293	7.44

Performance Specifications	
Current Rating	3 AMP
DWV	600 VAC Sea level
Insulation Resistance	5000 Megohms Minimum
Contact Resistance	8 Milliohms Maximum
Low Level Contact Resist.	32 Milliohms Maximum
Magnetic Permeability	2 μ Maximum
Operating Temperature	-55° C. to +150° C.
Shock, Vibration	50 g., 20g.
Mating Force	(10 Ounces) X (# of Contacts)

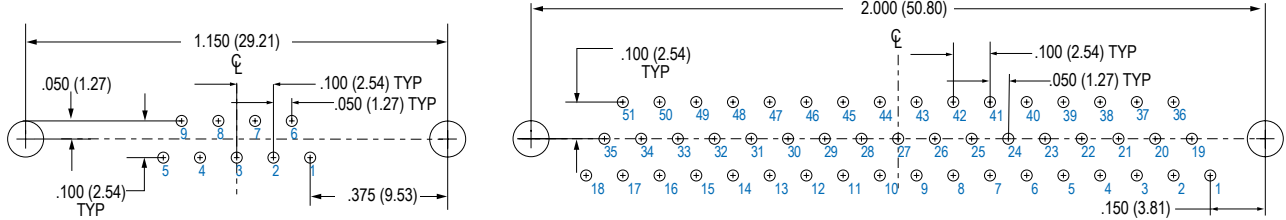
Materials and Finishes	
Connector Shell	Aluminum Alloy 6061 or Stainless Steel, 300 Series, passivated. See Ordering Info for Plating Options
Insulator, Tray	Liquid Crystal Polymer (LCP)/ Polyphenylene Sulfide (PPS)
Interfacial Seal	Fluorosilicone Rubber, Blue
Pin Contact	Copper Alloy, Gold over Nickel Plating
Socket Contact	Copper Alloy, Gold Over Nickel Plating
PCB Terminals	Gold Plated Copper Alloy, Solder Dipped
Hardware	300 Series Stainless Steel
Encapsulant	Epoxy Resin Hysol EE4215



# Micro-D MWDM-BS Vertical Mount Thru-Hole Printed Circuit Board Connectors

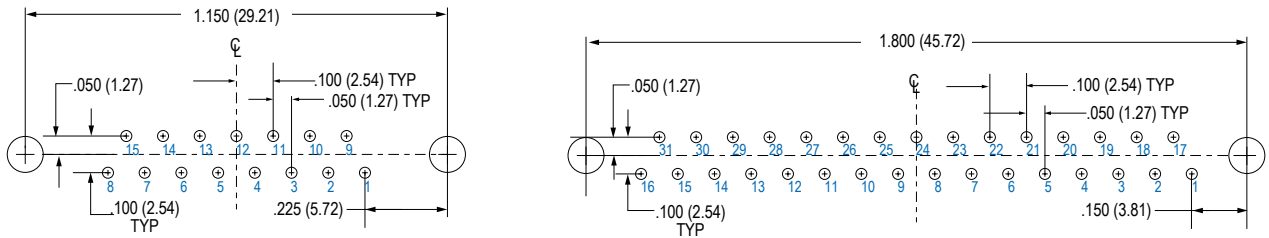
## MICRO-D BS Board Mount Connector PCB Layouts – Pin Connectors

Patterns shown are for connector mounting side of PC board. 9 Thru 51 Contacts .096 (2.44) Diameter Mounting Holes, 100 Pin .125 (3.18) Diameter



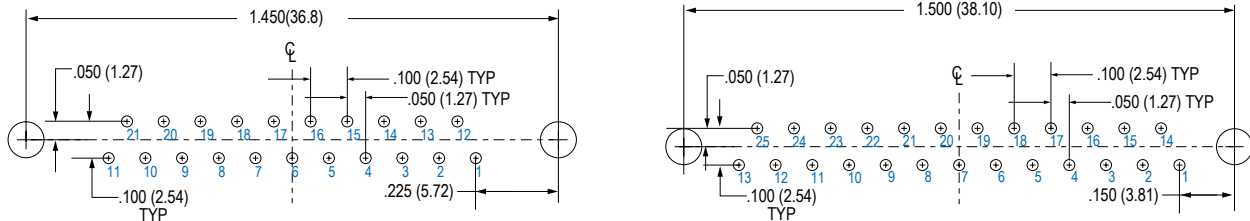
9 PIN

51 PIN



15 PIN

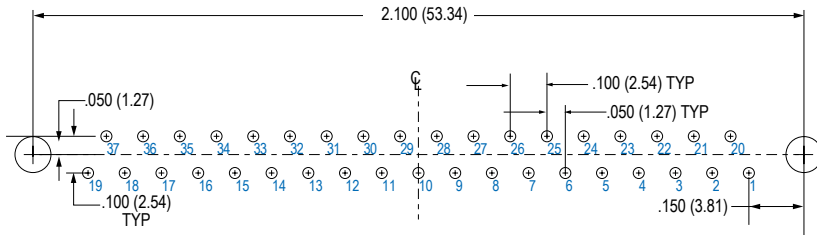
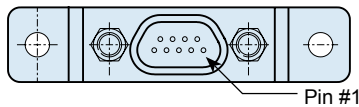
31 PIN



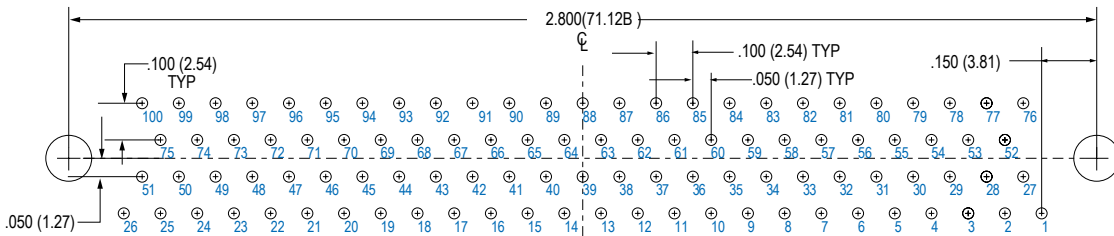
21 PIN

25 PIN

**Connector Orientation**



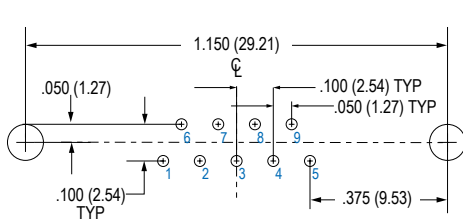
37 PIN



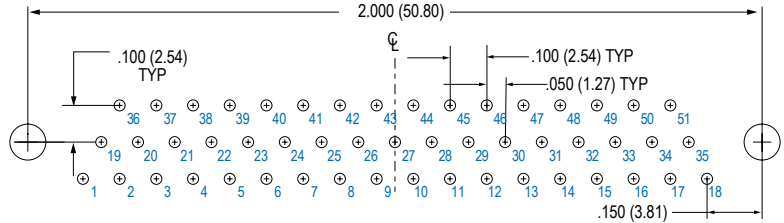
100 PIN

## MICRO-D BS Board Mount Connector PCB Layouts – Socket Connectors

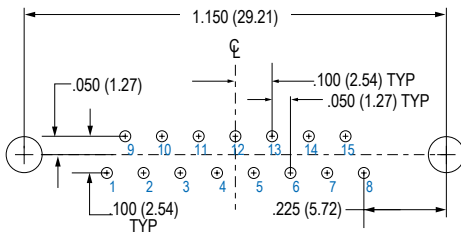
Patterns shown are for connector mounting side of PC board. 9 Thru 51 Contacts .096 (2.44) Diameter Mounting Holes, 100 Pin .125 (3.18) Diameter



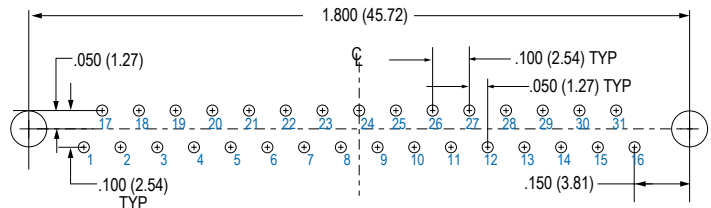
**9 SOCKET**



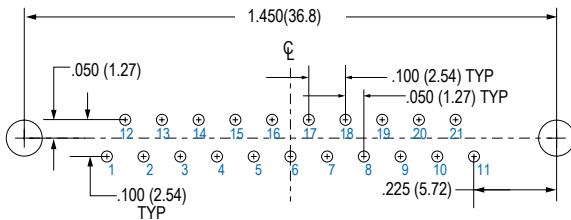
**51 SOCKET**



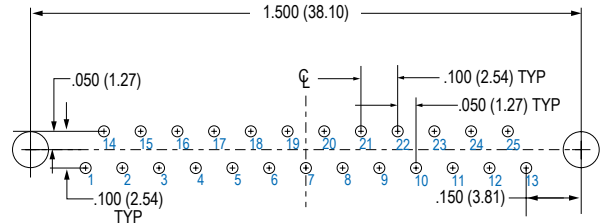
**15 SOCKET**



**31 SOCKET**

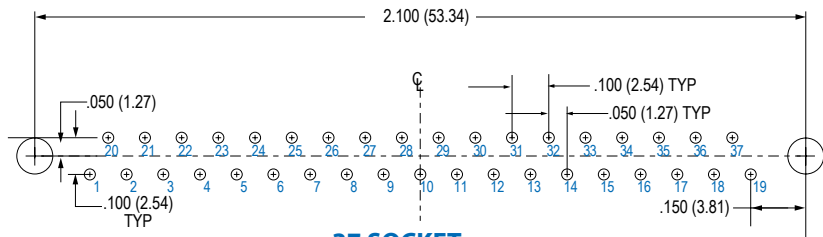
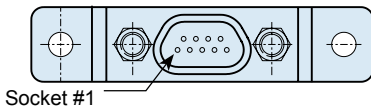


**21 SOCKET**

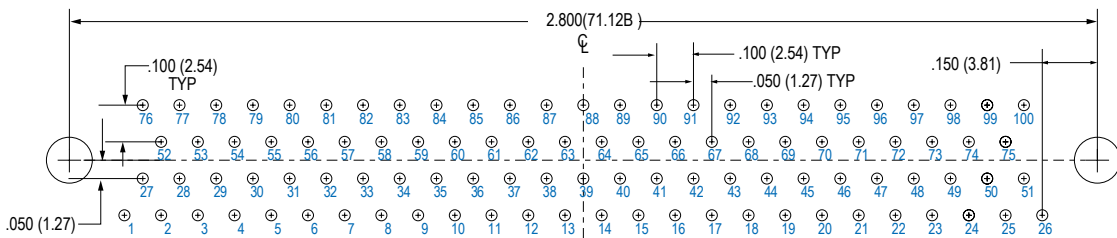


**25 SOCKET**

**Connector Orientation**



**37 SOCKET**



**100 SOCKET**

# Mouser Electronics

Authorized Distributor

Click to View Pricing, Inventory, Delivery & Lifecycle Information:

## Glenair:

[MWDM1L-37SBS-.250](#) [MWDM1L-51PBSP-.110](#) [MWDM1L-9PBSPT-.190](#) [MWDM2L-100PBS-.250](#) [MWDM2L-25SBSP-.110](#) [MWDM2L-51SBSP-.250](#) [MWDM2L-9PBSP-.110](#) [MWDM2L-37SBS-.250](#) [MWDM1L-15PBSP-.250](#) [MWDM1L-51SBSP-.150](#) [MWDM2L-9PBSPT-.110](#) [MWDM2L-25PBSP-.110](#) [MWDM1L-21PBSP-.110](#) [MWDM1L-21PBSP-.190](#) [MWDM1L-21PBSPT-.110](#) [MWDM1L-21SBS-.190](#) [MWDM1L-21SBS-.250](#) [MWDM1L-21SBSP-.110](#) [MWDM1L-21SBSP-.190](#) [MWDM1L-21SBST-.150](#) [MWDM1L-25PBS-.110](#) [MWDM1L-25PBSP-.110](#) [MWDM1L-25PBST-.150](#) [MWDM1L-25SBS-.190](#) [MWDM1L-25SBSP-.172](#) [MWDM1L-25SBSP-.250](#) [MWDM1L-31PBS-.110](#) [MWDM1L-31PBS-.250](#) [MWDM1L-31SBS-.250](#) [MWDM1L-31SBSP-.110](#) [MWDM1L-31SBSP-.150](#) [MWDM1L-37PBS-.110](#) [MWDM1L-37PBS-.150](#) [MWDM1L-37PBS-.190](#) [MWDM1L-37PBSP-.110](#) [MWDM1L-37PBSP-.190](#) [MWDM1L-37PBSPT-.110](#) [MWDM1L-37SBS-.110](#) [MWDM1L-37SBS-.150](#) [MWDM1L-37SBSP-.110](#) [MWDM1L-37SBSP-.150](#) [MWDM1L-37SBSP-.190](#) [MWDM1L-51PBS-.150](#) [MWDM1L-51PBSP-.150](#) [MWDM1L-51PBSP-.190](#) [MWDM1L-51PBSPT-.110](#) [MWDM1L-51PBSR3-.110](#) [MWDM1L-51SBS-.150](#) [MWDM1L-51SBS-.190](#) [MWDM1L-51SBSP-.110](#) [MWDM1L-51SBSP-.150](#) [MWDM1L-51SBSP-.190](#) [MWDM1L-51SBSP-.110](#) [MWDM1L-51SBSP-.150](#) [MWDM1L-51SBSP-.190](#) [MWDM1L-51SBSPT-.110](#) [MWDM1L-51SBSR4-.110](#) [MWDM1L-9PBS-.110](#) [MWDM1L-9PBS-.250](#) [MWDM1L-9PBSP-.110](#) [MWDM1L-9PBSP-.190](#) [MWDM1L-9PBSPT-.110](#) [MWDM1L-9PBSPT-.125](#) [MWDM1L-9PBSPT-.150](#) [MWDM1L-9PBST-.190](#) [MWDM1L-9SBS-.150](#) [MWDM1L-9SBS-.190](#) [MWDM1L-9SBSP-.110](#) [MWDM1L-9SBSP-.190](#) [MWDM1L-9SBSPT-.125](#) [MWDM1L-9SBSPT-.140](#) [MWDM1L-9SBSR2T-.110](#) [MWDM1L-9SBST-.125](#) [MWDM2L-100PBS-.150](#) [MWDM2L-100PBS-.172](#) [MWDM2L-100PBSPT-.110](#) [MWDM2L-100PBSR5T-.110](#) [MWDM2L-100PBST-.110](#) [MWDM2L-100SBS-.110](#) [MWDM2L-100SBS-.150](#) [MWDM2L-100SBSP-.110](#) [MWDM2L-100SBSR5T-.110](#) [MWDM2L-21SBSP-.150](#) [MWDM2L-25SBSP-.150](#) [MWDM1L-25SBSP-.150](#) [MWDM1L-9SBSPT-.150](#) [MWDM1L-100PBS-.110](#) [MWDM1L-100PBS-.150](#) [MWDM1L-100PBS-.172](#) [MWDM1L-100PBS-.190](#) [MWDM1L-100PBSPT-.150](#) [MWDM1L-100SBS-.110](#) [MWDM1L-100SBS-.190](#) [MWDM1L-100SBS-.250](#) [MWDM1L-100SBSP-.110](#) [MWDM1L-100SBSP-.150](#) [MWDM1L-100SBSP-.110](#) [MWDM1L-100SBSR1T-.110](#) [MWDM1L-15PBS-.110](#) [MWDM1L-15PBSP-.110](#) [MWDM1L-15PBSP-.150](#) [MWDM1L-15PBSP-.190](#) [MWDM1L-15PBSPT-.110](#) [MWDM1L-15PBST-.110](#)