



DC POWER CONNECTORS: KPJX-PM Series

Snap and Lock Panel Mount

Product Features

Laptop Computers, Power Supplies and Other Portable

Digital Equipment Applications

Snap & Lock Feature Helps to Prevent Accidental Disconnects

3 or 4 Pins Transmit Power, or One Pin Can Be Used For Signal Transmission

For Signal and DC Power Applications

CSA/NRTL Certified File No. LR78160

UL File No. E140125

Performance Specifications

Materials and Finish

Shield: Copper Alloy, Tin Plated

Body: PBT Thermoplastic, UL94 V-0 Rated

Power Pins: Brass, Tin Plated

Signal Pins: Phosphor Bronze, Tin Plated

Electrical Characteristics

Contact Rating

3 Position: Pin 1 and 2, 48V DC at 7.5A Max.,
Pin 3, 48V DC 1.0A Max.

4 Position: 48V DC 7.5A Max. For All Pins

Insulation Resistance: 50 Megohms Min. at 250V DC

Dielectric Withstanding Voltage: 500V AC For 1 Minute

Contact Resistance: 30 milliohms Max.

Mechanical Characteristics

Durability: 1000 Cycles

Suggested Wire Awg.: #18 For Power Wires, #24 for Signal Wire

| | | | |
|----------------|-----------------|------------------|---------------------------|
| 2D Drawing | IGES | STEP | 3D PDF |
| Check Stock | Solder Profile | Request a Sample | Send Us An Email |
| RoHS Compliant | REACH Compliant | UL Plastic | Certificate of Compliance |

Generated Part Number

Part Number Builder

| | | | | |
|----------------------|---|----------------------|----------------------|----------------------|
| <input type="text"/> | - | <input type="text"/> | <input type="text"/> | <input type="text"/> |
| Series | | No. of Contacts | Contact Type | Shield Option |

Series

KPJX-PM - Receptable, Panel Mount

Number of Contacts

3 Pin

4 Pin

Contact Type

S - Socket

Shield Option

Blank - Non-Shielded

S - Shielded

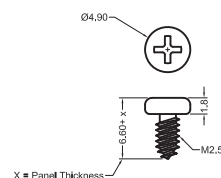
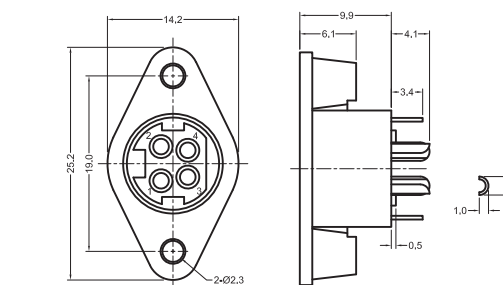
Recommended to be used with Kycon KPPX Series Plugs

Contact Kycon for Other Options

KPJX-PM Series

Dimensions in mm

KPJX-PM-4S



Recommended Mounting Screw

Mouser Electronics

Authorized Distributor

Click to View Pricing, Inventory, Delivery & Lifecycle Information:

[Kycon:](#)

[KPJX-PM-4S-S](#) [KPJX-PM-3S-S](#) [KPJX-PM-3S](#)