

4

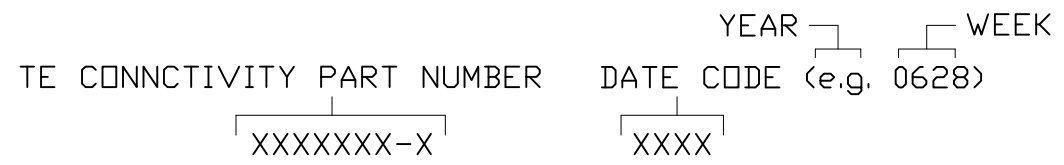
3

2

1

REVISIONS			
EC	REV	DESCRIPTION	DATE
	A1	REVISED PER ECO-11-005140	25MAR11

- 7. CONTACTS PURCHASED SEPARATELY.
- 6. ELCON EQUIVALENT SERIES 297-08-01100.
- 5. ITEMS PROVIDED TO THIS SPECIFICATION TO BE PERMANENTLY IDENTIFIED PER THE FOLLOWING IDENTIFIER:



- 4. A REFERENCE DIMENSION (X.XX) IS WITHOUT TOLERANCE AND USED FOR INFORMATION ONLY.
- 3. FINISHES:  
RETENTION CLIPS: BRITE DIP PICKLED PER INDUSTRY STANDARDS.
- 2. MATERIALS:  
INSULATORS: THERMOPLASTIC, GLASS REINFORCED, UL94V-0 FLAMMABILITY RATED, COLOR-BLACK.  
RETENTION CLIPS: COPPER OR STAINLESS STEEL.
- 1. PART NUMBER CHANGES AND OR DESIGN CHANGES AFFECTING ITEM INTERCHANGEABILITY REQUIRE PRIOR TE CONNECTIVITY APPROVAL AND AUTHORIZATION BY REVISION TO THIS DRAWING.

NOTES: UNLESS OTHERWISE SPECIFIED

PART NUMBER
1648203-1

INCH OR INCH (MM)  THIRD ANGLE PROJECTION UNLESS OTHERWISE SPECIFIED DIMENSIONS ARE IN INCHES (METRIC) TOLERANCES ANGLES ± .5' DECIMALS .XXX ± .010 (.25) .XX ± .02 (.3)	DRAWN R. F. A.	DATE 2/28/06	TE Connectivity TITLE CONNECTOR, PIN SIZE #12, #20, #12 CONFIG. LOWER DRAWER	SIZE	DWG NUMBER	REV.
	CHECKED			B	C= 1648203	A1
	APPROVED					
	APPROVED S. FLICKINGER	3/3/06				
	DCA APPROVED					
	ACAD FILE NUMBER	C1648203A.DWG		DWG SCALE	1=1	SH 1 OF 2

4

3

2

1

4

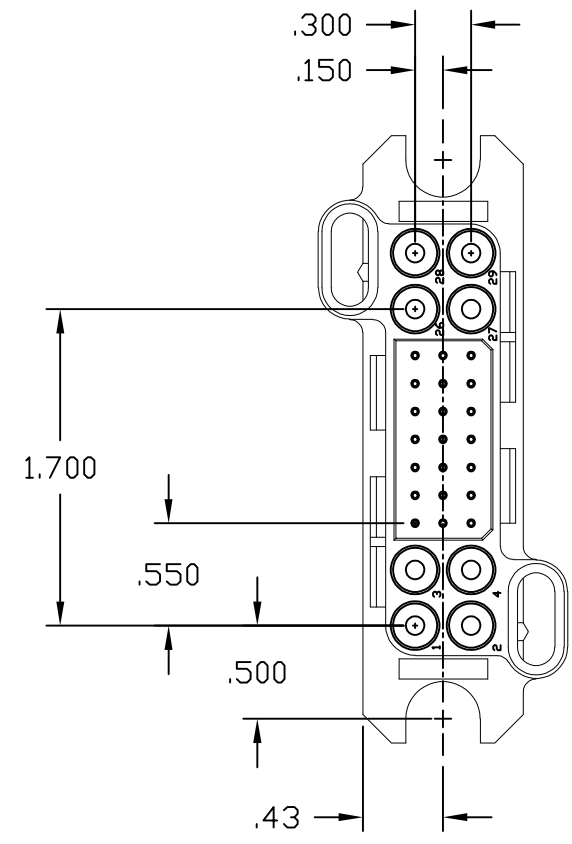
3

2

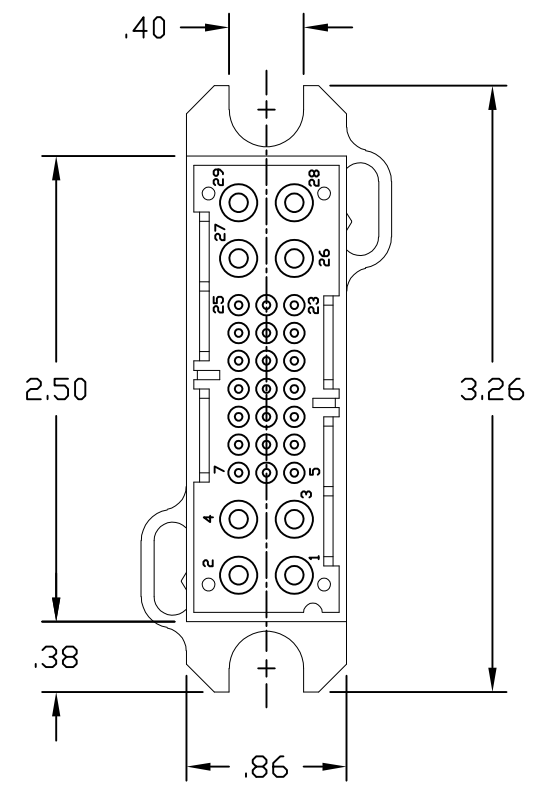
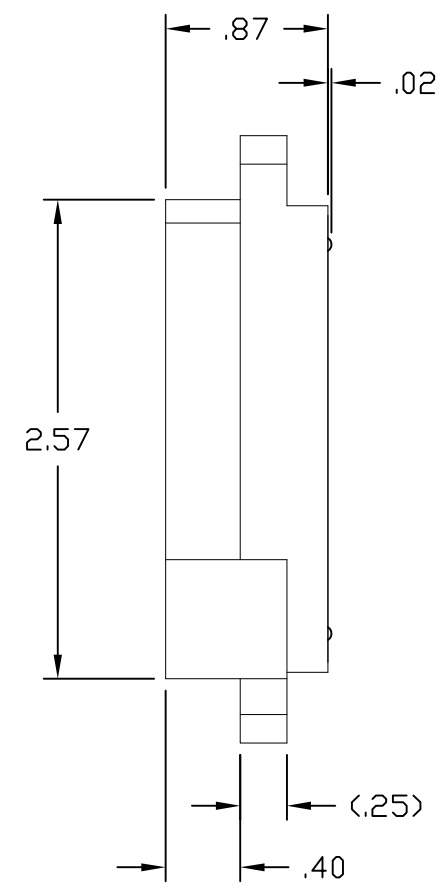
1

REVISIONS

EC	REV	DESCRIPTION	DATE
		SEE SHEET 1	



FRONT VIEW



REAR VIEW

B

B

A

A

<p>INCH OR INCH (MM)</p> <p>MM</p> <p>THIRD ANGLE PROJECTION</p> <p>UNLESS OTHERWISE SPECIFIED DIMENSIONS ARE IN INCHES (METRIC)</p> <p>TOLERANCES</p> <p>ANGLES ± .5°</p> <p>DECIMALS</p> <p>.XXX ± .010 (.25)</p> <p>.XX ± .02 (.3)</p>	DRAWN	DATE	TE Connectivity			
	R. F. A.	2/28/06				
	CHECKED		TITLE CONNECTOR, PIN SIZE #12, #20, #12 CONFIG. LOWER DRAWER			
	APPROVED					
	APPROVED	3/3/06	SIZE	DWG NUMBER	REV.	
	S. FLICKINGER		B	C= 1648203	A1	
	DCA APPROVED		ACAD FILE NUMBER C1648203A.DWG		DWG SCALE 1=1	SH 2 OF 2

4

3

2

1

# Mouser Electronics

Authorized Distributor

Click to View Pricing, Inventory, Delivery & Lifecycle Information:

[TE Connectivity:](#)

[1648203-1](#)