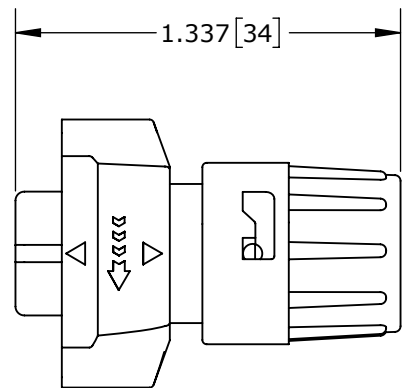


CUSTOMER PRINT

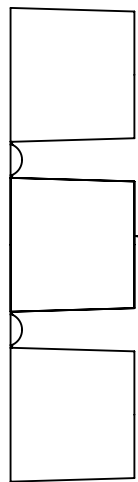
PART NUMBER: W6382-XPG-P-3XX

NOTES:

1. ALL PARTS TO BE BULK PACKED.
2. SEE DRAWING HPMISTD FOR HOLE PATTERN.
3. ALL DIMENSIONS ARE REFERENCE ONLY. DIMENSIONS IN [] ARE METRIC.



SHOWN ASSEMBLED KIT
ASSY: W6382-2PG-P-3XX SHOWN

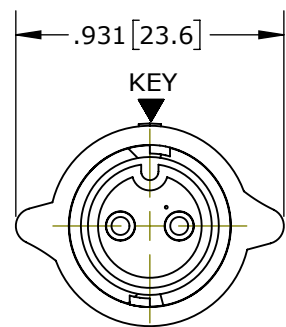


DAISY CHAIN GROMMETS (3DC)
.125 I.D. FOR CABLES .09-.14 [2.3 - 3.6] O.D.
.188 I.D. FOR CABLES .18-.20 [4.6 - 5.1] O.D.
.250 I.D. FOR CABLES .24-.26 [6.1 - 6.6] O.D.

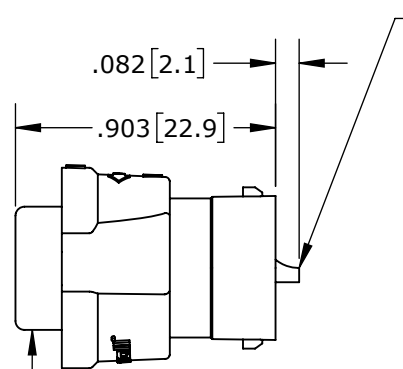
| CABLE-END CONNECTOR P/N | CONTACTS |
|-------------------------|----------|
| W6382-2PG-P-3XX | 2 #16 |
| W6382-3PG-P-3XX | 3 #16 |
| W6382-4PG-P-3XX | 4 #16 |
| W6382-XPG-P-3XX | |

GROMMET SIZE:
3DC FOR DAISY CHAIN GROMMETS
3XX FOR SINGLE GROMMET SIZE PER LIST ON THIS DRAWING.

NUMBER OF CONTACTS

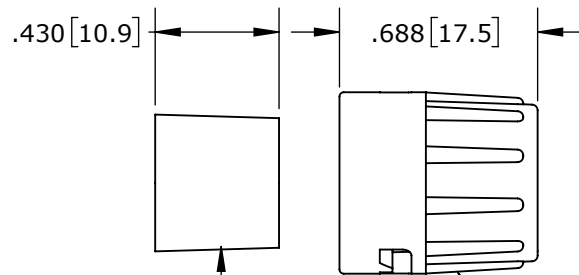


MATING FACE
ASSY: W6382-2PG-P-3XX SHOWN



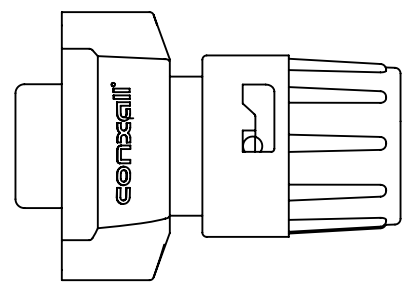
CABLE-END ASSEMBLY KIT
MAT'L: BLACK THERMOPLASTIC HOUSING
BLACK THERMOPLASTIC COUPLING RING
RED SILICONE O-RING
STAINLESS STEEL SPRING

(2-4) #16 PIN CONTACT, SOLDER
MAT'L: COPPER ALLOY, GOLD PLATED

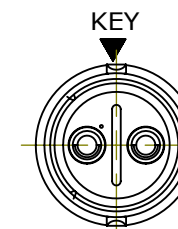


BACKSHELL
MAT'L: THERMOPLASTIC, BLACK

GROMMET
MAT'L: THERMOPLASTIC ELASTOMER, BLACK
GROMMET SINGLE SIZE = CABLE O.D. RANGE:
311: .125 I.D. FOR CABLES .09-.14 [2.3 - 3.6] O.D.
315: .156 I.D. FOR CABLES .15-.17 [3.8 - 4.3] O.D.
318: .188 I.D. FOR CABLES .18-.20 [4.6 - 5.1] O.D.
321: .225 I.D. FOR CABLES .21-.23 [5.3 - 5.8] O.D.



SHOWN ASSEMBLED KIT
ASSY: W6382-2PG-P-3XX SHOWN



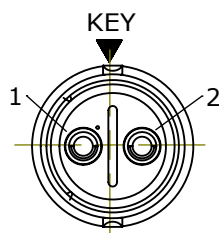
WIRING END
ASSY: W6382-2PG-P-3XX SHOWN WITHOUT HARDWARE

CUSTOMER APPROVAL

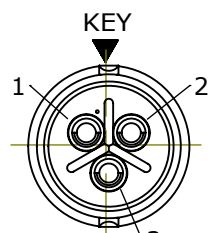
THIS DOCUMENT CONTAINS CONFIDENTIAL INFORMATION PROPRIETARY TO CONXALL CORPORATION. ANY REPRODUCTION, DISCLOSURE, OR USE OF THIS DOCUMENT / INFORMATION IS EXPRESSLY PROHIBITED UNLESS AUTHORIZED IN WRITING BY CONXALL CORPORATION.

APPROVED BY: _____

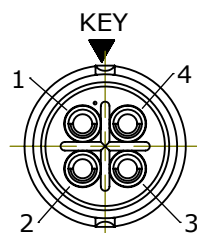
DATE: _____



WIRING END
W6382-2PG-P-3XX



WIRING END
W6382-3PG-P-3XX



WIRING END
W6382-4PG-P-3XX

RoHS COMPLIANT

| | | | |
|--|----------------|--|---|
| 0A | PNK | 05-10-19 | PDR 16014 |
| REV. | INIT. | DATE | DESCRIPTION |
| | | | ORIG. DRAWN BY: PNK DATE: 05-10-19 |
| ALL INFORMATION ILLUSTRATED IS THE PROPERTY OF CONXALL CORPORATION. UNAUTHORIZED DUPLICATION OR DISTRIBUTION OF THIS DOCUMENT IS PROHIBITED. | | | <p>601 E. WILDWOOD VILLA PARK, IL 60181</p> |
| UNLESS OTHERWISE SPECIFIED TOLERANCES: 3 PLACE DECIMALS ±0.10 ANGLES ±1° FRACTIONS ±1/16 - CRITICAL CHARACTERISTIC FLAG PER SPEC. XXXX | | | |
| APPROVED BY: | | TITLE: CABLE-END ASSEMBLY 2-4 #16 PIN CONTACTS, SOLDER INSTA-CLICK™ MINI-CON-X | |
| SCALE: NTS | SIZE: B | SHEET: 1 OF 1 | CUSTOMER: STANDARD PRODUCT |
| FILE: W6382-XPG-P-3XX | DIRECTORY: SLW | PART NUMBER: W6382-XPG-P-3XX | REV: 0A |

Mouser Electronics

Authorized Distributor

Click to View Pricing, Inventory, Delivery & Lifecycle Information:

Switchcraft:

[W6382-3PG-P-321](#) [W6382-2PG-P-318](#) [W6382-4PG-P-315](#) [W6382-3PG-P-311](#) [W6382-4PG-P-318](#) [W6382-2PG-P-311](#) [W6382-2PG-P-315](#) [W6382-4PG-P-311](#) [W6382-3PG-P-3DC](#) [W6382-3PG-P-318](#) [W6382-2PG-P-3DC](#) [W6382-4PG-P-3DC](#) [W6382-3PG-P-315](#) [W6382-2PG-P-321](#) [W6382-4PG-P-321](#)