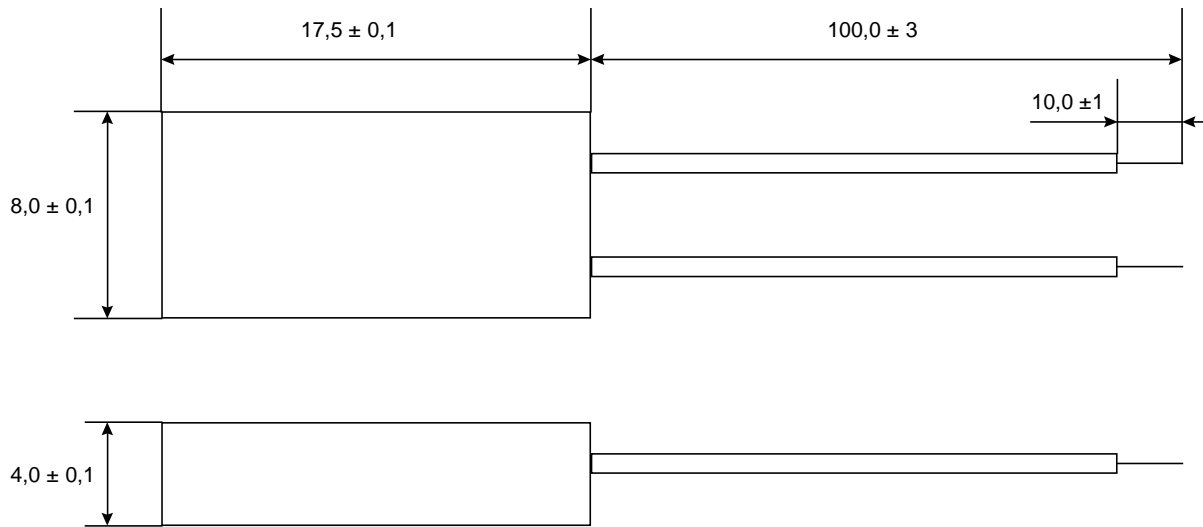


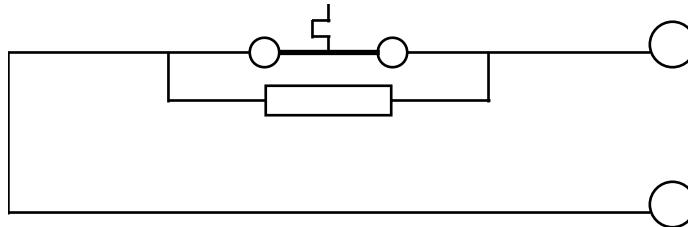


Thermal limit switch Q8.-...- (sealed housing)



Connection type: solder flags
insulated stranded tin plated wire AWG 24
insulated solid wire AWG 24 yellow
insulated stranded untinned wire AWG 24

Circuit diagram: normally closed



switching capacity:	250 V; 2,5 A (1,6) A/ 50Hz
min./ max. current:	50 mA/ 9,6 A (20 x)
temperature range:	50°C - 150°C
tolerance:	± 5 K oder ± 10 K
peak temperature:	160°C/ 200°C 1 Minute
holding resistor:	4 - 60 KOhm (Je nach Anwendung)
approvals	VDE, UL

Additional wire length and/ or connections upon request.