

PRODUCT NUMBER
77311-YYY-XXLF

ROHS COMPATIBLE
SEE NOTE 6

PIN STYLE SEE SHEET 2
TOTAL NB OF POSITIONS 01 TO 36
OPTION LETTER SEE NOTE 7

PRODUCT NUMBER (BERGSTRIK PACKAGING)
77311-YYY-00LF

INDICATES THE PRODUCT IS ROHS
COMPATIBLE; SEE NOTE 6
POSITIONS PER REEL : 00=36,000 (BERGSTRIK)

PIN STYLE	MATING	SOLDER	OAL
01	5.84	2.41	10.8
02	5.84	3.42	11.8
18	5.84	3.05	11.43
22	7.75	3.05	13.35
24	6.75	2.9	12.2
27	6.6	2.66	11.8

NOTES:

- HOUSING MAT'L : HIGH TEMPERATURE THERMOPLASTIC. UL94V-0 COLOR: BLACK
- PIN MATERIAL : PHOSPHOR BRONZE
- BERGSTRIK PRODUCT PACKAGED IN POLYBAGS, BERGSTRIK PRODUCT PACKAGED PER REELS.
- 9N MIN RETENTION IN EITHER DIRECTION
- TO DETERMINE DIMENSIONS :
N = NUMBER OF POSITIONS PER ROW
EXAMPLE : 8 POS N x 2.54 = 20.32mm
- ROHS COMPATIBLE PRODUCT SPECIFICATIONS

d - PLATING:

- "LF" MEANS THE PRODUCT IS LEAD-FREE, 2µm MINIMUM MATTE TIN OVER 1.27µm MINIMUM NICKEL UNDERPLATE.
- MANUFACTURING PROCESS COMPATIBILITY
 - THE HOUSING WILL WITHSTAND EXPOSURE TO 260°C ±5°C SOLDER BATH TEMPERATURE FOR 5 SECONDS IN A WAVE SOLDER APPLICATION WITH A 1.6mm MIN THICK CIRCUIT BOARD.
 - REFLOW COMPATIBLE

- LABELING:
 - MEETS PACKAGING SPECS AS PER GS-14-920
- LEGAL STATEMENT: SEE GS-47-0004
- OPTIONS : - = POLYBAG PACKAGING

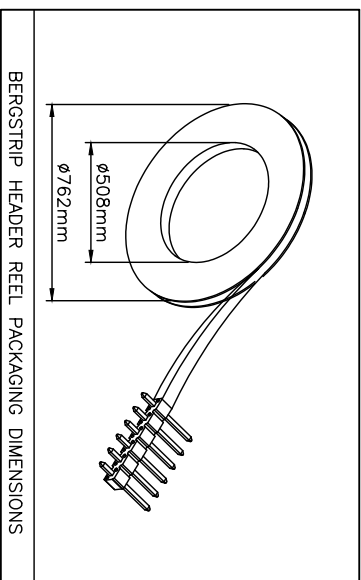
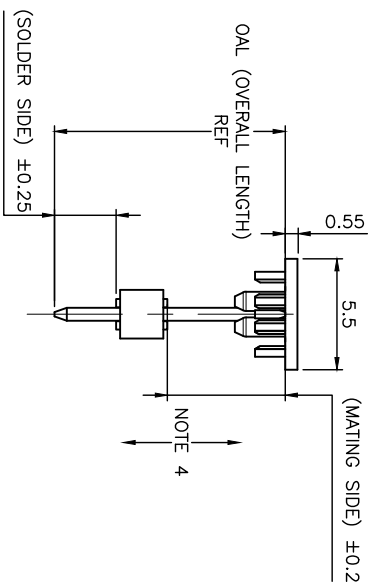
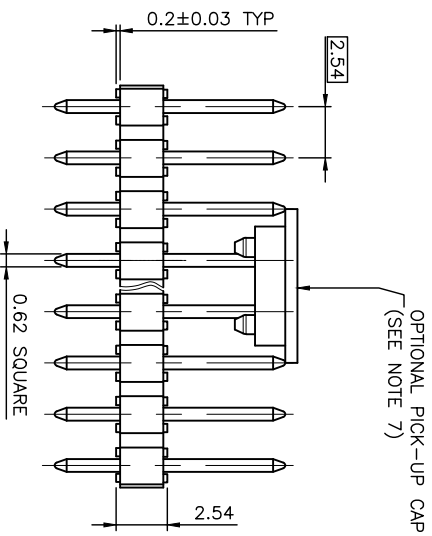
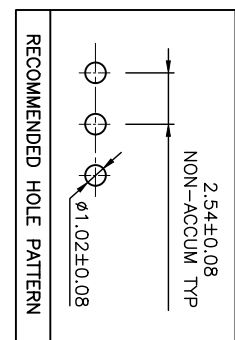
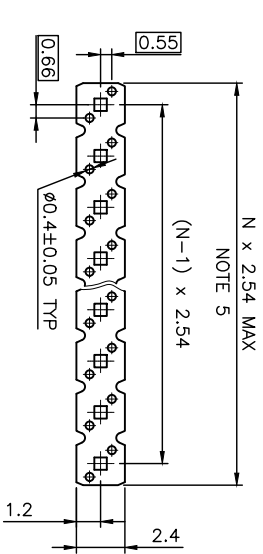
- T = TUBE PACKAGING WITHOUT PICK UP CAP
- K = TAPE & REEL PACKAGING, WITHOUT PICK UP CAP ONLY FOR P/N 77311-462K04(LF) AND 77311-462K05(LF)
- KC = TAPE & REEL PACKAGING WITHOUT PICK UP CAP AND WITH HIGH RETENTION FEATURES ONLY FOR P/N 77311-462KV04(LF)
- AV = TAPE & REEL PACKAGING WITH PICK UP CAP FOR CUSTOMER DEDICATED PART
- C = HIGH RETENTION FEATURES, SEE SHEET 2
- R = RETENTION FEATURES, SEE SHEET 2
- IF RETENTION FEATURE "R" AND TUBE PACKAGING "T" ARE BOTH REQUIRED OPTIONAL LETTER "R" WILL APPEAR INSTEAD OF THE FIRST DASH
- EXAMPLE : 77311R424T03LF
- V = BIBOX PACKAGING FOR CUSTOMER DEDICATED PART. ONLY FOR 77311-4BNV01LF

2 3

4

5

6



mat'l. code	SEE NOTES	surface	tolerance	projection	product family
1tr	ecn no	dr	date	ISO 1302	BERGSTRIK
CW	F-38159	DDE	20.08.26	tolerances unless otherwise specified	
CR	F-28445	DDE	17.11.10	x ±0.3	
CS	F-29484	DDE	18.03.08	xxx ±0.05	
CT	F-31328	LMW	18.09.20	linear	
CU	F-33656	LMW	19.05.22	linear	
CV	F-35304	LMW	19.11.04	linear	

UNSHR.HEADER

STR SR TWT

77311

CUSTOMER Drawing

sheet 1 of 3 size A3

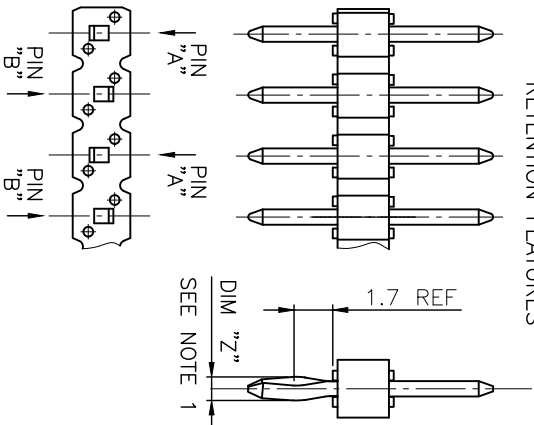
Amphenol FCI

type

- PLATING**
- 1 = 0.76µm GOLD/GXT ON CONTACT AREA, 2µm TIN MIN ON TAIL
 - 4 = 2µm TIN MIN FULL PLATED
 - 5 = 0.25µm GOLD/GXT ON CONTACT AREA, 2µm TIN MIN ON TAIL
 - 8 = 0.38µm GOLD/GXT ON CONTACT AREA, 2µm TIN MIN ON TAIL
 - G = 0.76µm FULL GXT
 - S = 0.38µm FULL GXT
 - T = 2µm TIN MIN FULL PLATED INCLUDED PIN TYP
 - 1.27µm NICKEL MIN UNDERLAYER FOR ALL PLATING VERSIONS

RETENTION FEATURES :

- 1 - PART NUMBER 77311-XXXXXXLF: DIM "Z"=(0.99)
 - PART NUMBER 77311-XXXXXXLF: DIM "Z"= 1.05MIN -1.15MAX
 - 2 - PINS "A" AND "B" USED FOR RETENTION.
 - 3 - DIRECTION OF RETENTION SHOWN BY ARROWS.
 - 4 - ON 4 TO 36 POSITIONS HEADER; RETENTION IS IN MID POSITION OF HEADER (4 CENTRAL PINS)
 - 5 - FOR RETENTION OPTION , SOLDER TAIL LENGTH TO BE 2.9 MIN UP TO 3.5 MAX.
 - 6 - HOUSING MATERIAL FOR P/N 77311-4AUC03LF & 77311-TAUC03LF HIGH TEMPERATURE THERMOPLASTIC UL94V-0 COLOR : NATURAL
- PLATING SPECIFICATIONS :**
- 7 - ONLY FOR PLATING 1XX, 8.0MM GOLD / GXT PLATING AREA FROM PIN TYPE ON MATING SIDE



mat'l. code		surface		tolerance		projection		product family			
ltr	ecr no	dr	date	ISO 1302	ISO 406	ISO 101	mm	title	family		
BU	B-20596	AMA	15.03.30	tolerances unless otherwise specified		mm		UNSHR. HEADER STR SR TMT	BERGSTIK		
BV	F-22085	LMU	15.10.05	angles	linear	mm	Amphenol FCI				
BW	F-22100	AMA	15.10.08			scale N/A				77311 CUSTOMER	
BX	F-26241	LMU	17.03.01	dr	D.LE	01.01.24					Sheet 2 of 3
BS	B-20169	BVE	15.02.12	eng'	JM.C	01.01.24					
BT	B-20497	BVE	15.03.18	qppd	JF.N	01.01.24					
sheet index	revision							dwg no	size		
								77311	A3		

PRODUCTS SPECIFICATIONS

PIN STYLE	MATING	SOLDER	OAL
01	5.84	2.41	10.8
02	5.84	3.42	11.8
03	5.72	5.09	13.35
05	5.72	10.14	18.4
08	5.72	17.78	26.04
11	5.72	5.94	14.20
15	8.51	2.55	13.6
18	5.84	3.05	11.43
19	12.83	3.03	18.4
20	15.37	3.04	20.95
22	7.75	3.05	13.35
24	6.75	2.9	12.2
25	8.51	3.18	14.22
27	6.6	2.65	11.8
26	15.57	2.84	20.95
29	17.5	3.46	23.5
32	10.3	3.05	15.9
38	5.84	3.82	12.2
39	11.2	3.05	16.8
46	8.08	2.98	13.6
54	8.08	3.81	14.43
58	14.47	3.05	20.06
62	13.5	3.05	19.09
70	6.54	3.50	12.57
83	20.46	3.00	26.00
85	5.72	8.51	16.76
87	6.98	3.05	12.57
91	5.6	10.21	18.35
92	5.65	12.76	20.95
93	6.00	4.81	13.35
94	15.60	3.20	21.25
95	10.00	8.45	20.95
96	10.95	3.05	16.55
97	9.00	3.55	15.09
98	3.00	1.35	6.84
99	24.00	3.05	29.50
AA	5.72	15.24	23.50
AB	N/A08		2.79

PRODUCTS SPECIFICATIONS

PIN STYLE	MATING	SOLDER	OAL
AC	7.21	3.05	12.80
AD	17.53	3.43	23.50
AE	4.99	2.80	10.33
AF	5.72	3.05	11.30
AG	5.84	4.95	13.33
AH	14.31	3.20	20.05
AJ	8.90	3.40	14.85
AK	25.06	3.00	30.80
AL	3.30	3.30	9.14
AM	9.26	3.05	14.85
AN	7.60	4.40	14.47
AP	7.80	3.30	13.60
AR	18.86	2.41	23.81
AS	11.91	1.45	15.90
AT	4.60	4.60	11.61
AU	12.10	3.10	17.70
AV	6.30	6.30	15.10
AW	9.16	1.80	13.50
AX	5.08	2.43	10.05
AY	7.49	3.47	13.50
BA	8.08	2.75	13.37
BB	10.80	2.15	15.50
BC	8.08	3.81	14.43
BD	10.10	2.16	14.80
BE	13.65	2.41	18.60
BF	2.54	5.32	10.40
BG	4.98	1.85	9.23
BH	4.69	2.41	9.50
BU	7.21	6.15	15.90
BK	6.86	2.65	12.05
BL	17.70	3.25	23.50
BM	10.96	3.70	16.20
BN	19.46	3.00	25.00
BP	8.80	3.20	14.50
BR	19.46	4.00	26.00
BS	5.72	11.05	19.30
BT	8.50	5.36	16.40
BU	3.80	3.80	10.14
BV	5.08	2.79	10.40
BW	7.36	2.30	12.20

NOTE 6

PRODUCTS SPECIFICATIONS

PIN STYLE	MATING	SOLDER	OAL
BX	2.67	3.43	8.60
BY	11.90	3.05	17.50

NOTE 7

mat'l. code	surface	tolerance	projection	product family
	ISO 1302	ISO 406 ISO 1001		BERGSTIK

ltr	ecrn no	dr	date	tolerances unless otherwise specified	linear	mm	scale	product type
H	F-29484	DDE	18.03.08	angles			N/A	UNSHR.HEADER
J	F-31328	LMU	18.09.20					STR SR TMT
K	F-33636	LMU	19.05.22					
L	F-35304	LMU	19.11.04					
M	F-38159	DDE	20.08.26	engr	AMA	15.10.08		
				chr	LMU	15.10.08		
G	F-28445	DDE	17.11.10	pppd	JCO	15.10.08		
					ASO	15.10.08		

sheet	revision	index	sheet	revision	index	sheet	revision	index



UNSHR.HEADER

STR SR TMT

77311

CUSTOMER Drawing