

SUPER FLUX LED LAMP, 4PIN LED
BL-FL7670xx
Features:

- 7.62*7.62*4.0MM, 3MM ROUND SUPER FLUX LED LAMP
- Ultra brightness.
- Wide Viewing Angles.
- Ideal For Backlight and Indicator
- RoHs Compliance


RoHs Compliance
□ Electrical-optical characteristics: (Ta=25°C) (Test Condition: IF=20mA)

| Part Number | Chip | | | Lens Type | Forward Voltage(VF) Unit:V | | Luminous Intensity (Iv) Unit:mcd | | Viewing Angle 2θ/2 (deg) |
|--------------|--------------------|----------|---------|-----------|-------------------------------|-----------|-------------------------------------|------|--------------------------|
| | Emitted Color | Material | λp (nm) | | Typ | Max | Min. | Typ. | |
| | | | | | BL-FL7670URC | Ultra Red | AlGaAs,DDH | 660 | |
| BL-FL7670UEC | Ultra Orange | AlGaInP | 630 | 2.10 | 2.50 | 800 | 1600 | | |
| BL-FL7670UYC | Ultra Yellow | AlGaInP | 590 | 2.10 | 2.50 | 600 | 1400 | | |
| BL-FL7670UGC | Ultra Green | AlGaInP | 574 | 2.20 | 2.50 | 200 | 800 | | |
| BL-FL7670PGC | Ultra Pure Green | InGaN | 525 | 3.80 | 4.50 | 1000 | 5200 | | |
| BL-FL7670BGC | Ultra Bluish Green | InGaN | 505 | 3.80 | 4.50 | 800 | 4200 | | |
| BL-FL7670UBC | Ultra Blue | InGaN | 470 | 2.70 | 4.20 | 800 | 2200 | | |
| BL-FL7670UWC | Ultra White | InGaN | / | 2.70 | 4.20 | 1000 | 5200 | | |

□ Absolute maximum ratings (Ta=25°C)

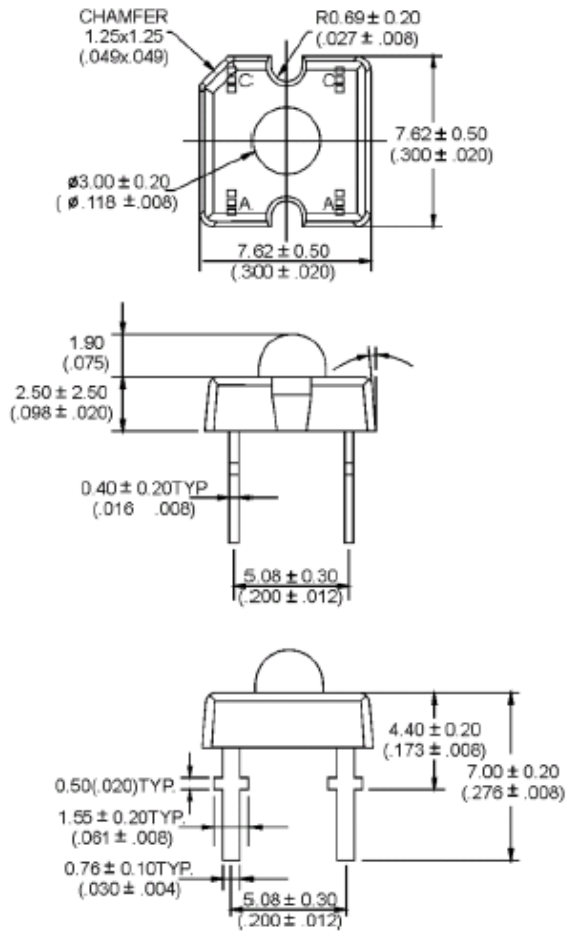
| Parameter | UR | UE | UY | UG | PG | BG | UB | W | Unit |
|---|---|-----|-----|-----|-----|-----|-----|-----|------|
| Forward Current I _F | 25 | 30 | 30 | 30 | 30 | 30 | 30 | 30 | mA |
| Power Dissipation P _g | 60 | 65 | 65 | 75 | 110 | 110 | 120 | 120 | mW |
| Reverse Voltage V _R | 5 | 5 | 5 | 5 | 5 | 5 | 5 | 5 | V |
| Peak Forward Current I _{PF} (Duty 1/10 @1KHZ) | 150 | 150 | 150 | 150 | 150 | 100 | 100 | 100 | mA |
| Operation Temperature T _{OPR} | -40 to +80 | | | | | | | | °C |
| Storage Temperature T _{STG} | -40 to +85 | | | | | | | | °C |
| Lead Soldering Temperature T _{SOL} | Max.260±5°C for 3 sec Max. (1.6mm from the base of the epoxy bulb) | | | | | | | | °C |

SUPER FLUX LED LAMP, 4PIN LED

BL-FL7670xx

□ **Package configuration & Internal circuit diagram**

BL-LF7670 Series



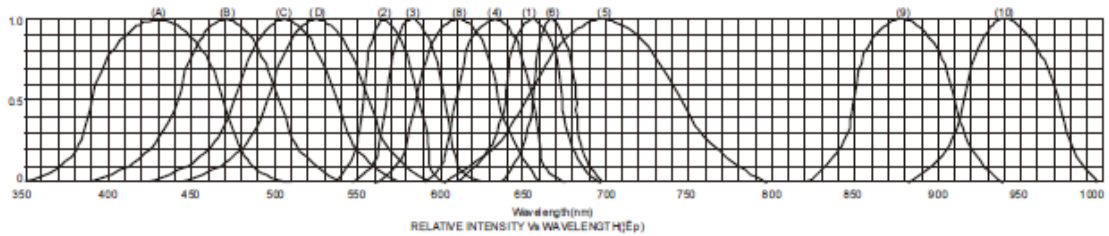
Notes:

1. All dimensions are in millimeters (inches)
2. Tolerance is $\pm 0.25(0.01)$ unless otherwise noted.
3. Specifications are subject to change without notice.

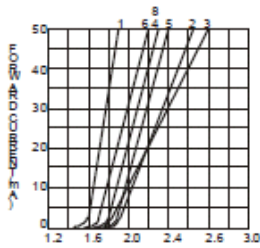
SUPER FLUX LED LAMP, 4PIN LED

BL-FL7670xx

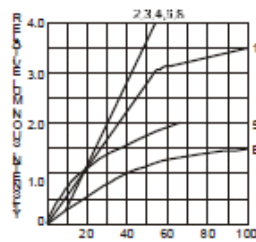
□ Typical electrical-optical characteristics curves:



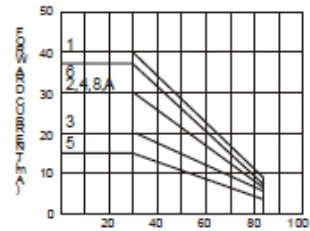
- | | |
|---|--------------------------------------|
| (1) - GaAsP/GaAs 655nm/Red | (9) - GaAlAs 880nm |
| (2) - GaP 570nm/Yellow Green | (10) - GaAs/GaAs & GaAlAs/GaAs 940nm |
| (3) - GaAsP/GaP 585nm/Yellow | (A) - GaN/SiC 430nm/Blue |
| (4) - GaAsP/GaP 635nm/Orange & Hi-Eff Red | (B) - InGaNSiC 470nm/Blue |
| (5) - GaP 700nm/Bright Red | (C) - InGaNSiC 505nm/Ultra Green |
| (6) - GaAlAs/GaAs 660nm/Super Red | (D) - InGaAlSiC 525nm/Ultra Green |
| (8) - GaAsP/GaP 610nm/Super Red | |



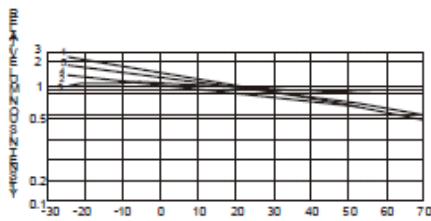
FORWARD CURRENT (IF)
FORWARD CURRENT VS.
FORWARD VOLTAGE



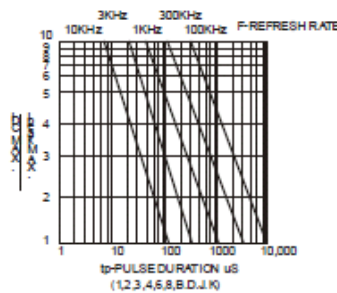
FORWARD CURRENT (mA)
RELATIVE LUMINOUS
INTENSITY VS. FORWARD
CURRENT



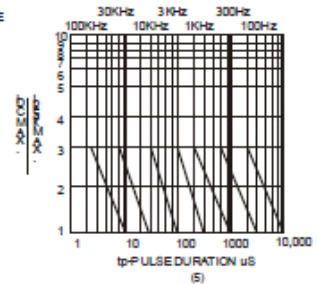
AMBIENT TEMPERATURE Ta(°C)
FORWARD CURRENT VS. AMBIENT
TEMPERATURE



AMBIENT TEMPERATURE Ta(°C)



tp-PULSE DURATION μs
(1,2,3,4,6,8,B,D,J,K)



(S)

NOTE: 25°C free air temperature unless otherwise specified