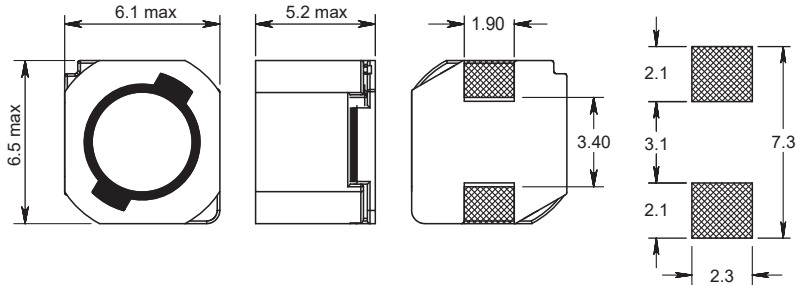
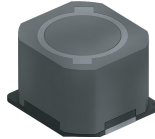


PISA 2416

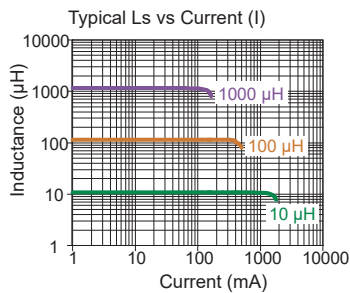
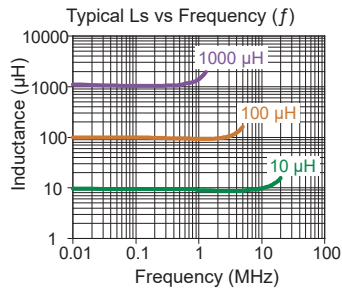


Magnetically Shielded

Engineer's Kit: EK-PISA2416-X



Recommended layout for solder pads



Part No	Inductance L (µH)	fL (kHz)	Tol ± (%)	DCR max (Ω)	Rated DC Current I (A)
PISA2416-4R7M-04	4.7	1	20	0.09	2.40
PISA2416-100M-04	10	1	20	0.12	1.35
PISA2416-120M-04	12	1	20	0.13	1.20
PISA2416-150M-04	15	1	20	0.18	1.10
PISA2416-180M-04	18	1	20	0.24	1.00
PISA2416-220M-04	22	1	20	0.27	0.91
PISA2416-270M-04	27	1	20	0.3	0.82
PISA2416-330M-04	33	1	20	0.33	0.75
PISA2416-390M-04	39	1	20	0.37	0.69
PISA2416-470M-04	47	1	20	0.52	0.62
PISA2416-560M-04	56	1	20	0.56	0.58
PISA2416-680M-04	68	1	20	0.63	0.52
PISA2416-820M-04	82	1	20	0.71	0.47
PISA2416-101M-04	100	1	20	1.03	0.43
PISA2416-121M-04	120	1	20	1.15	0.39
PISA2416-151M-04	150	1	20	1.68	0.35
PISA2416-181M-04	180	1	20	1.87	0.32
PISA2416-221M-04	220	1	20	2.08	0.29
PISA2416-271M-04	270	1	20	2.37	0.26
PISA2416-331M-04	330	1	20	2.67	0.23
PISA2416-391M-04	390	1	20	2.94	0.22
PISA2416-471M-04	470	1	20	3.93	0.2
PISA2416-561M-04	560	1	20	5.43	0.18
PISA2416-681M-04	680	1	20	7.32	0.17
PISA2416-821M-04	820	1	20	8.24	0.15
PISA2416-102M-04	1000	1	20	9.26	0.14

Core Material: Ferrite

Revision date: 29 Nov 2023

Base Material: Plastic

SPQ: Taped / Reel 1000 [-04]

Remarks:

- Additional gluing to PCB board is recommended.
- I - see description in Inductors Technical Data.