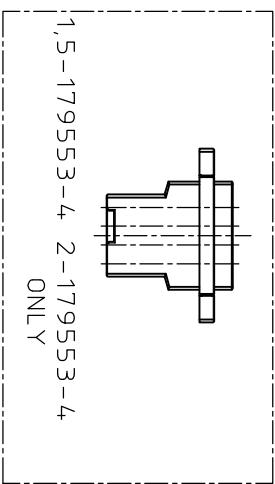
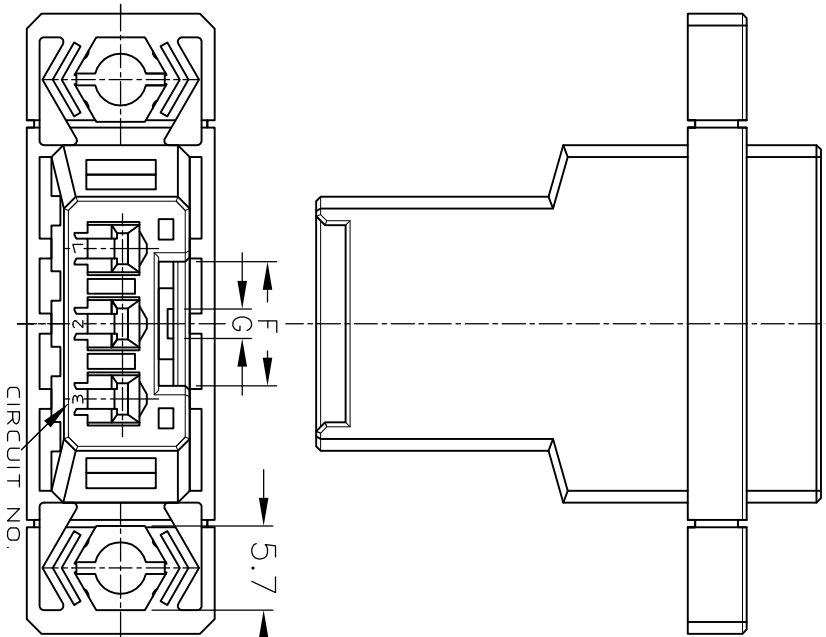
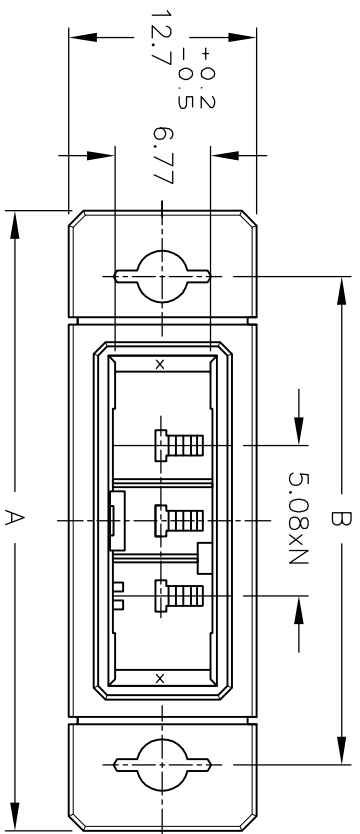
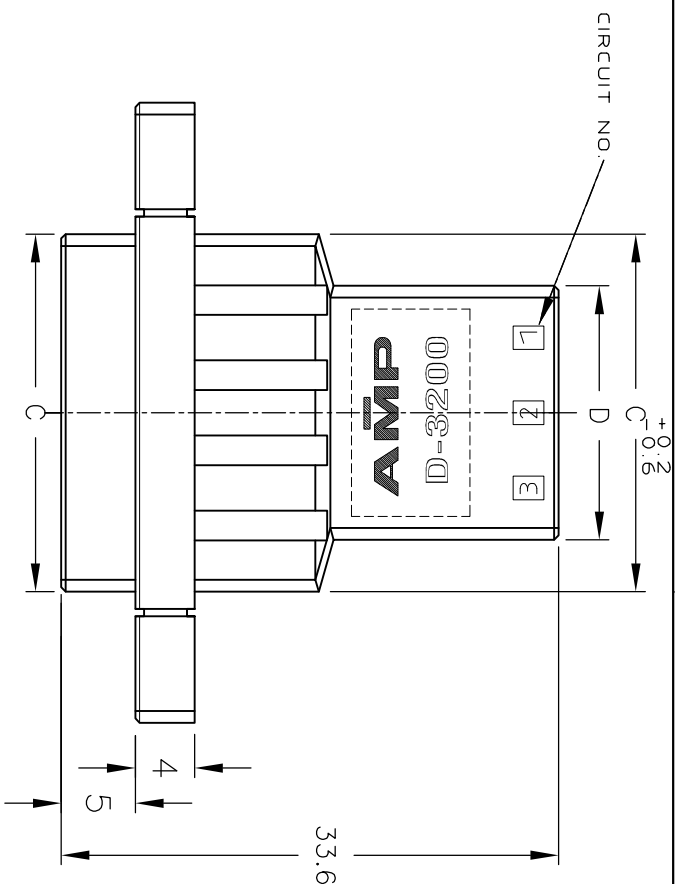


4

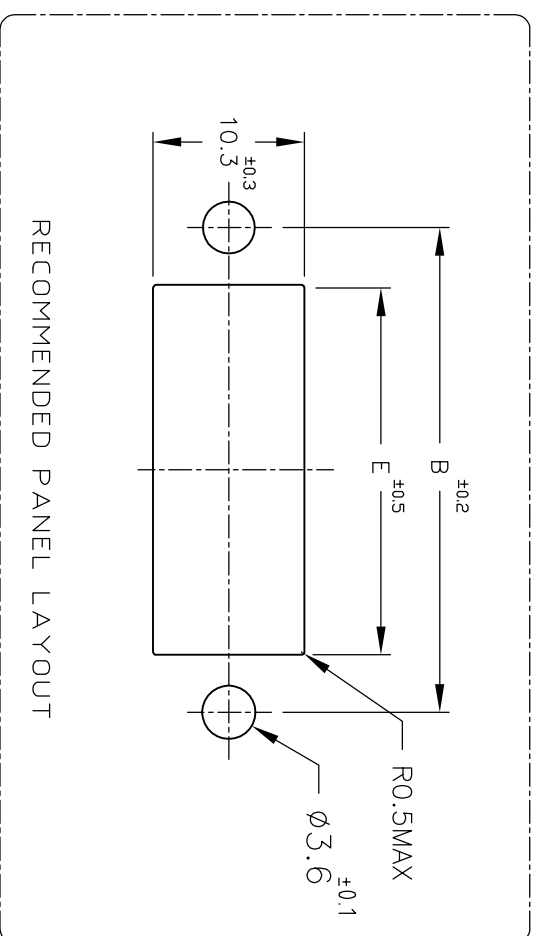
3

2

1

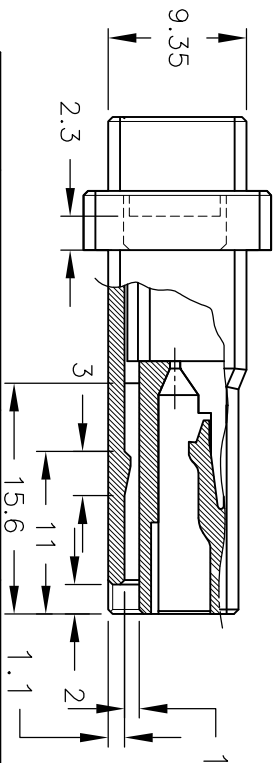


1,5-179553-2, 2-179553-2 ONLY



NOTES

- 1 MATERIAL: GLASS FIELD THERMO PLASTIC, POLYESTER COLOR: BLACK
- 2 TO COAT ALL SURFACE OF HOUSING WITH TEFLON
- 3 PRODUCT SPEC: 108-5349
- 4 PANEL ATTACHMENT RECOMMENDATION M3 SCREW



OBSOLETE  
OBSOLETE  
OBSOLETE  
OBSOLETE  
OBSOLETE

FINISH	KEYING PATTERN	POS.	DIMENSION	A	B	C	D	E	F	G	N	KEY	PART NUMBER
2	[Pattern]	4	4.6-9.9	38	29-24	22-24	30	8.4	2	3	X		5-179553-4
-	[Pattern]	4	4.6-9.9	38	29.24	22.24	30	8.4	2	3	Y		2-179553-4
-	[Pattern]	4	4.6-9.9	38	29.24	22.24	30	8.4	2	3	X		1-179553-4
2	[Pattern]	3	4.1-9.1	33	24.16	17.16	25	8.4	2	2	Y		6-179553-3
2	[Pattern]	3	4.1-9.1	33	24.16	17.16	25	8.4	2	2	X		5-179553-3
-	[Pattern]	3	4.1-9.1	33	24.16	17.16	25	8.4	2	2	Y		2-179553-3
-	[Pattern]	3	4.1-9.1	33	24.16	17.16	25	8.4	2	2	X		1-179553-3
2	[Pattern]	2	3.6-8.3	28	19.08	12.08	20	8.4	2	1	X		5-179553-2
-	[Pattern]	2	3.6-8.3	28	19.08	12.08	20	8.4	2	1	Y		2-179553-2
-	[Pattern]	2	3.6-8.3	28	19.08	12.08	20	8.4	2	1	X		1-179553-2

LTR	(REVISION RECORD)	DR	CHK	DATE
H	REVISED	HUNY		24 APR 83
G	REVISED PER ECR-11-012413	T.T.M		16 JUN 91

(WIRE RANGE)	(INSULATION-DIA)	(MATERIAL)	(FINISH)
SEE NOTES			

(NAME)	(GENERAL TOLERANCE)	SIZE	LOC	(NO.)
WIRE TO WIRE TAB HSG FOR DYNAMIC D-3200S PANEL MOUNT TYPE	K10: ±0.2 K10.50: ±0.25 K10.3: ±0.3	A3	J	179553

**STE** TE Connectivity

# Mouser Electronics

Authorized Distributor

Click to View Pricing, Inventory, Delivery & Lifecycle Information:

[TE Connectivity:](#)

[1-179553-3](#)