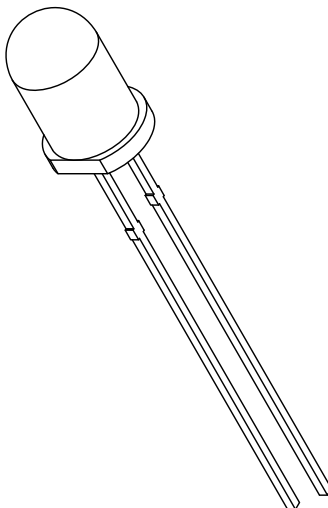
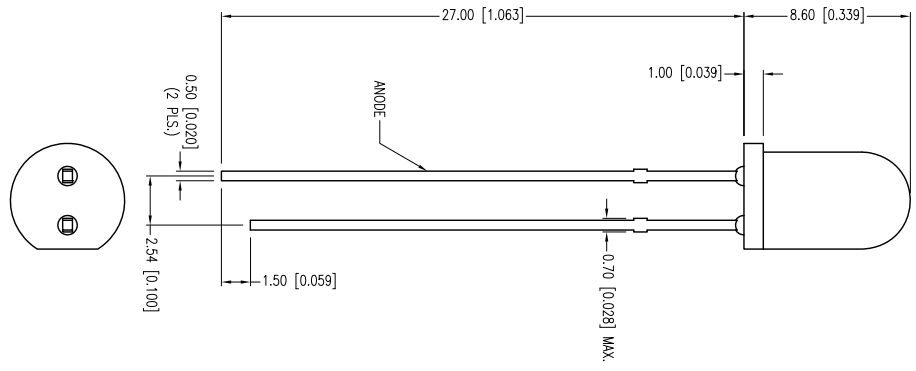
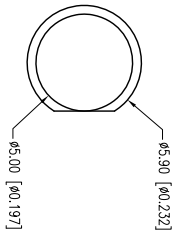


PART NUMBER	SSL-LX5093UECC	REV.	B
DATE	10.30.06	E.C.N. NUMBER AND REVISION COMMENTS	REV.
	05.16.11	E.C.N. #11148.	A
		E.C.N. #10BRDR. & REDRAWN/#11718.	B



[A] ELECTRO-OPTICAL CHARACTERISTICS TA = 25°C

PARAMETER	MIN	TYPE	MAX	UNITS	TEST COND
PEAK WAVELENGTH	500		3.8	nm	
FORWARD VOLTAGE	5.0			Vf	If=100µA
REVERSE VOLTAGE				Vr	
AXIAL INTENSITY	8000		12000	mcd	If=20mA
VIEWING ANGLE			20	2x theta	
EMITTED COLOR:			GREEN		
EPOXY LENS FINISH:			WATER CLEAR		

[A] LIMITS OF SAFE OPERATION AT 25°C

PARAMETER	MAX	UNITS
PEAK FORWARD CURRENT*	150	mA
STEADY CURRENT	25	mA
POWER DISSIPATION	95	mW
DERATE FROM 25°C	-1.2	mW/°C
OPERATING TEMP.	-40 TO +85	°C
STORAGE TEMP.	-40 TO +85	°C
SOLDERING TEMP.	+260	°C
2.0mm FROM BODY	3	SEC. MAX.

* I<10µS

*UNLESS OTHERWISE SPECIFIED TOLERANCES PER DECIMAL PRECISION ARE: X=±1 (±0.039), X.X=±0.5 (±0.020), X.XX=±0.25 (±0.010), X.XXX=±0.127 (±0.005), LEAD SIZE=±0.05 (±0.002), LEAD LENGTH=±0.75 (±0.030), MIN.= -0.000, DECIMAL PRECISION MAX.= +0.000, DECIMAL PRECISION

LUMEX
 Creating LED and LCD Solutions Together™
 425 N. GARY AVE.
 CAROL STREAM, IL 60188-4900
 PHONE: +1(800)278-3666
 FAX: +1(630)315-2152
 WEB: WWW.LUMEX.COM
 MEMBER OF **TW PHOTONICS GROUP**

QUASARBRITE T-5mm (T-1 3/4) 500nm ULTRA EMERALD GREEN LED, WATER CLEAR LENS.
 THE SPECIFICATIONS MAY CHANGE AT ANY TIME WITHOUT NOTICE DUE TO NEW MATERIALS OR PRODUCT IMPROVEMENT
 CONFIDENTIAL INFORMATION
 THE INFORMATION CONTAINED IN THIS DOCUMENT IS THE PROPERTY OF LUMEX INC. EXCEPT AS SPECIFICALLY AUTHORIZED IN WRITING BY LUMEX INC., THE HOLDER OF THIS DOCUMENT SHALL KEEP ALL INFORMATION CONTAINED HEREIN CONFIDENTIAL AND SHALL PROTECT SAME IN WHOLE OR IN PART FROM DISCLOSURE AND DISSEMINATION TO ALL THIRD PARTIES.

UNCONTROLLED DOCUMENT

DATE:	05.16.11	DRAWN BY:	AB
PAGE:	1 OF 1	CHKD BY:	KF
SCALE:	NTS	APRVD BY:	BC
UNIT:	mm [INCH]		