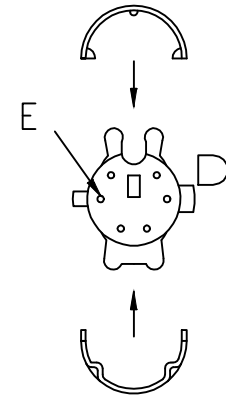
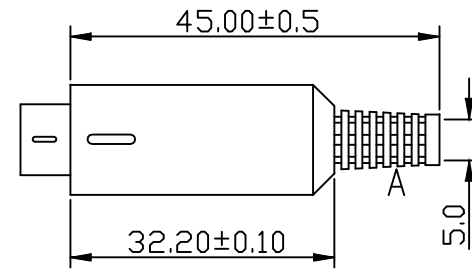
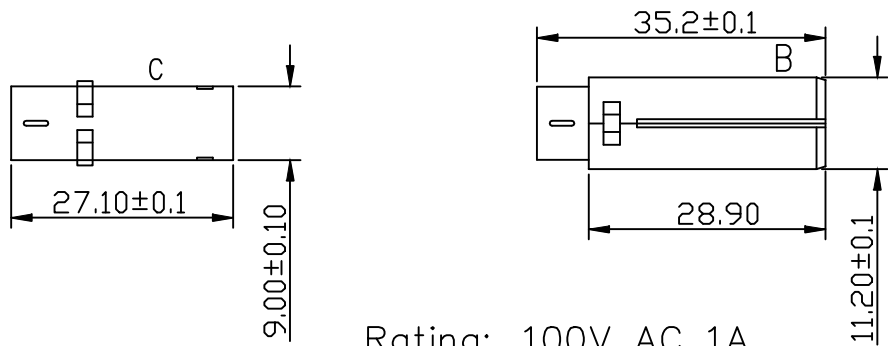


GTT P/N	MDP3SA	MDP4SA	MDP5SA	MDP6SA	MDP7SA	MDP8SA
RS P/N	463-366	463-372		463-388		463-394
NO of pins	3	4	5	6	7	8

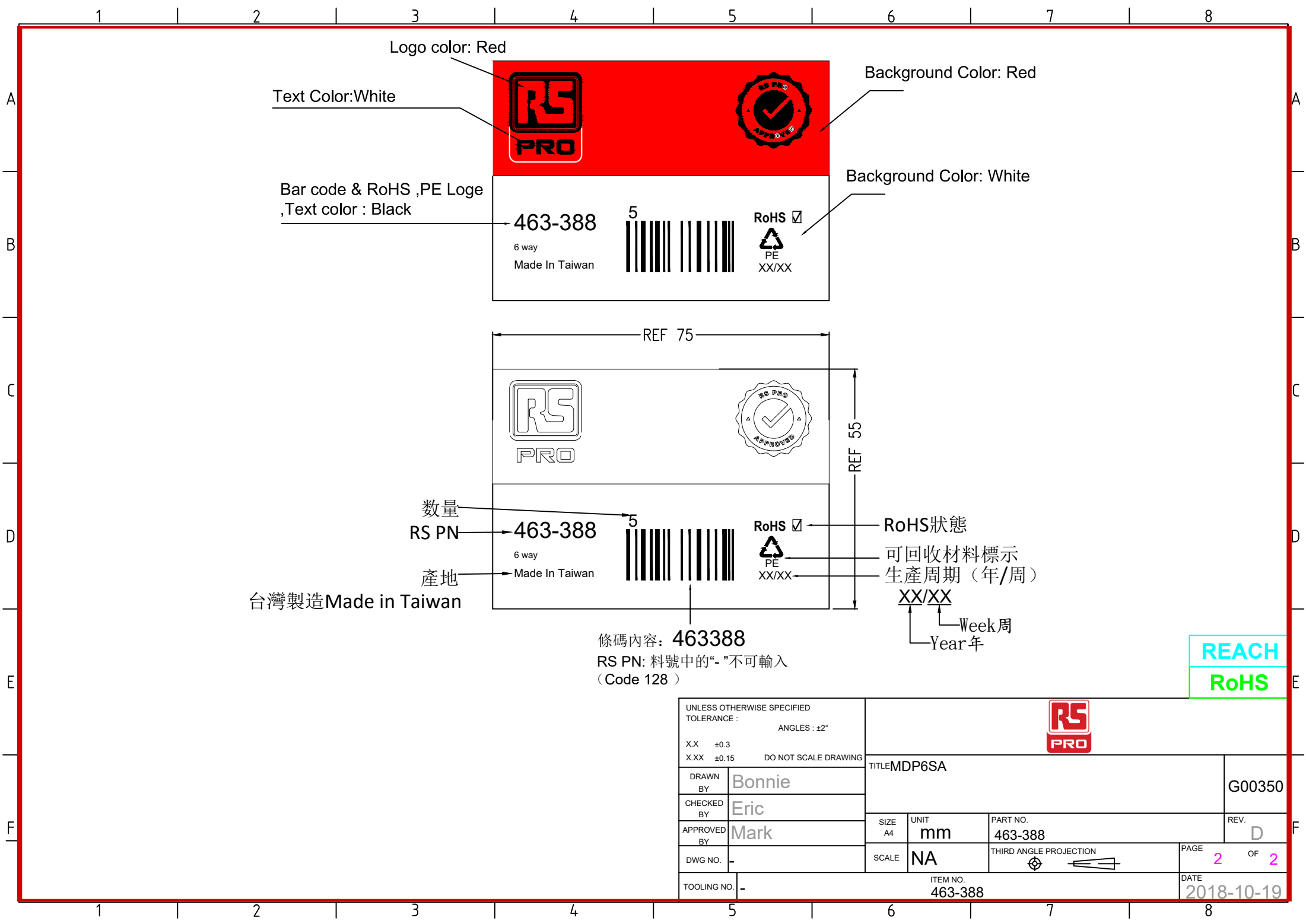


Rating: 100V AC 1A  
 Insulation  
 Resistance: 50Mohm/500V DC  
 Dielectric: 500V AC/1minute

Materials:  
 A.BOOT: PVC  
 B.MIDDLE HOOD: ABS  
 C.METAL PART: COPPER,  
 NICKEL PLATED  
 D.INSULATOR: PC  
 E.PIN CONTACT: COPPER,SILVER

REACH  
 RoHS

UNLESS OTHERWISE SPECIFIED TOLERANCE :				TITLE MDP6SA		G00350	
X.X ±0.3 X.XX ±0.15 ANGLES : ±2° DO NOT SCALE DRAWING							
DRAWN BY	Bonnie	SIZE A4	UNIT mm	PART NO.	463-388	REV.	D
CHECKED BY	Eric	SCALE	NA	THIRD ANGLE PROJECTION	PAGE 1 OF 2		
APPROVED BY	Mark			DATE 2018-10-19			
DWG NO.		ITEM NO. 463-388					
TOOLING NO.							



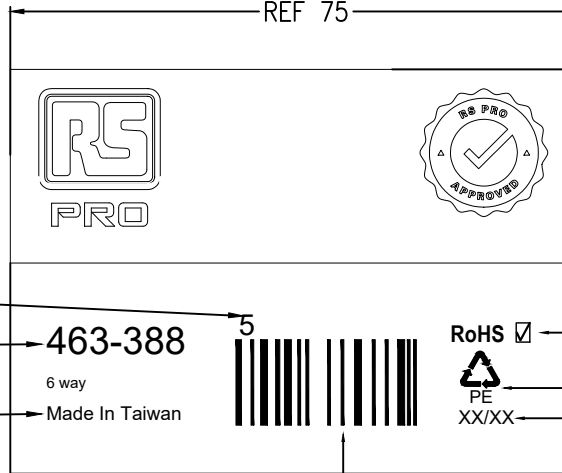
Logo color: Red

Text Color: White

Background Color: Red

Bar code & RoHS ,PE Loge  
,Text color : Black

Background Color: White



数量  
RS PN → 463-388  
產地 → Made In Taiwan

台灣製造 Made in Taiwan

條碼內容: 463388

RS PN: 料號中的“-”不可輸入  
(Code 128)

RoHS 狀態  
可回收材料標示  
生產周期 (年/周)  
XX/XX  
Week 周  
Year 年

REACH  
RoHS

UNLESS OTHERWISE SPECIFIED TOLERANCE : X.X ±0.3 X.XX ±0.15		ANGLES : ±2° DO NOT SCALE DRAWING			
DRAWN BY	Bonnie	TITLE MDP6SA			G00350
CHECKED BY	Eric	SIZE A4	UNIT mm	PART NO. 463-388	REV. D
APPROVED BY	Mark	SCALE NA	THIRD ANGLE PROJECTION		PAGE 2 OF 2
DWG NO.	-	ITEM NO. 463-388			DATE 2018-10-19
TOOLING NO.	-				