

1. MATERIALS AND FINISHES:
BODY - ZINC DIE CAST, NICKEL PLATING
CONTACT - PHOSPHOR BRONZE, GOLD PLATING (.000003 THICK)
 @ CONTACT AREA ONLY, TIN PLATING AT TAIL, NICKEL PLATED OVERALL
INSULATOR - POLYPROPYLENE
HOUSING - PBT 15% G.F., WHITE
ROUND PIN - BRASS, TIN PLATING
GROUNDNG TERMINAL - STEEL, TIN PLATING

2. ELECTRICAL:

- A. IMPEDANCE: 50 OHM
- B. FREQUENCY RANGE: DC - 1 GHz
- C. DIELECTRIC WITHSTANDING VOLTAGE: 1500 VRMS, MIN.

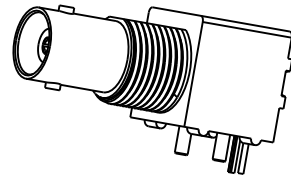
3. MECHANICAL:
A. DURABILITY: 500 CYCLES MIN.
B. TEMPERATURE RANGE: -55° C TO 85° C

4. PACKAGING:
A. PACKAGED IN PACKING TRAYS
B. QUANTITY PER TRAY: 40

5. SEPERATELY SUPPLIED MOUNTING HARDWARE
TO BE TIGHTENED TO 10 IN-LBS MIN/15 IN-LBS MAX
WHEN ASSEMBLING TO PANEL

REVISIONS

REV	DESCRIPTION	DATE	ECO	APPR
A	RELEASE TO MFG.	6/27/89	36598	DR
J	REDRAWN WAS SIZE 'C', DEL NOTE 1 THRU 4; ADD NOTES 8 THRU10 & PLATE CODES; DEL ITEMS 2 THRU 4; ITEM 1 WAS 12382	11/27/96	41683	CPM/
K	ITEM 5 WAS 31-12070-TP	8/26/05	45703	CPM/
L	UPDATED FORMAT AND NOMINAL ENVELOPE DIMENSIONS	10/2/12	49265	EW

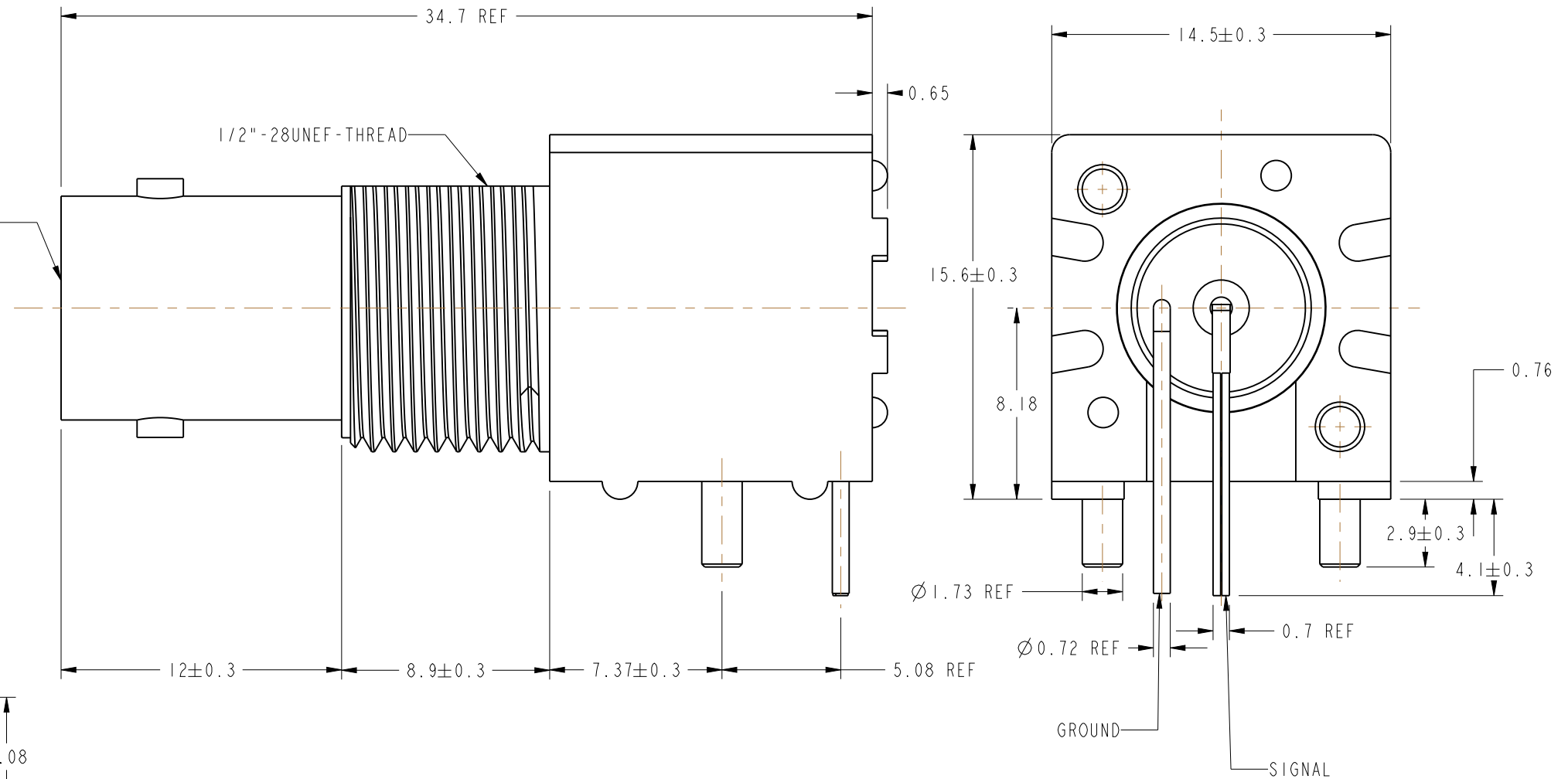


PANEL CUTOUT

Diagram showing a circular panel cutout with a diameter of $\varnothing 12.83$. The vertical dimension is 11.7.

RECOMMENDED PCB LAYOUT

Diagram showing the recommended PCB layout for the circular cutout. The layout includes two circular pads, each with a diameter of $\varnothing 2$ (TYP(2)). The pads are positioned 10.16 apart horizontally. The vertical distance from the center of the pads to the bottom edge of the cutout is 5.08. The horizontal distance from the center of the pads to the left edge of the cutout is 2.54. The pads are labeled "GROUND" and "SIGNAL". The diameter of the pads is $\varnothing 0.9$ (TYP(2)).



CUSTOMER OUTLINE DRAWING

ALL OTHER SHEETS ARE FOR INTERNAL USE ONLY

UNLESS OTHERWISE SPECIFIED, DIMENSIONS ARE IN METRIC AND TOLERANCES ARE: <0.5mm 0.5 - 6mm 6 - 30mm 30 - 120mm ANGLES ± 0.05mm ±0.1mm ±0.2mm ± 0.3mm ±1°				MATERIAL SEE NOTES		DRAWN ERIC WANKOFF		DATE 20-Jun-12		TITLE 50 OHM BNC R/A JACK, ISOLATED		Amphenol RF www.amphenolrf.com	
NOTICE - These drawings, specifications, or other data (1) are, and remain the property of Amphenol corp. (2) must be returned upon request; and (3) are confidential and not to be disclosed to any person other than those to whom they are given by Amphenol Corp. the furnishing of these drawings, specifications, or other data by Amphenol Corp., or to any other person to anyone for any purpose is not to be regarded by implication or otherwise in any manner licensing, granting rights to permitting such holder or any other sperson to manufacture, use or sell any product, process or design, patented or otherwisle, that may in any way be related to or disclosed by said drawings, specifications, or other data.						ENGINEER D ROYCE		DATE 2/1/90					
						REFERENCE D ROYCE		DATE 2/1/90					
										ITEM NO. 31-5431			
						CONFIGURATION LEVEL: CAD FILE				APPROVED		DATE	
FINISH				DWG SIZE B		REV L							

Mouser Electronics

Authorized Distributor

Click to View Pricing, Inventory, Delivery & Lifecycle Information:

[Amphenol:](#)

[031-5431](#)