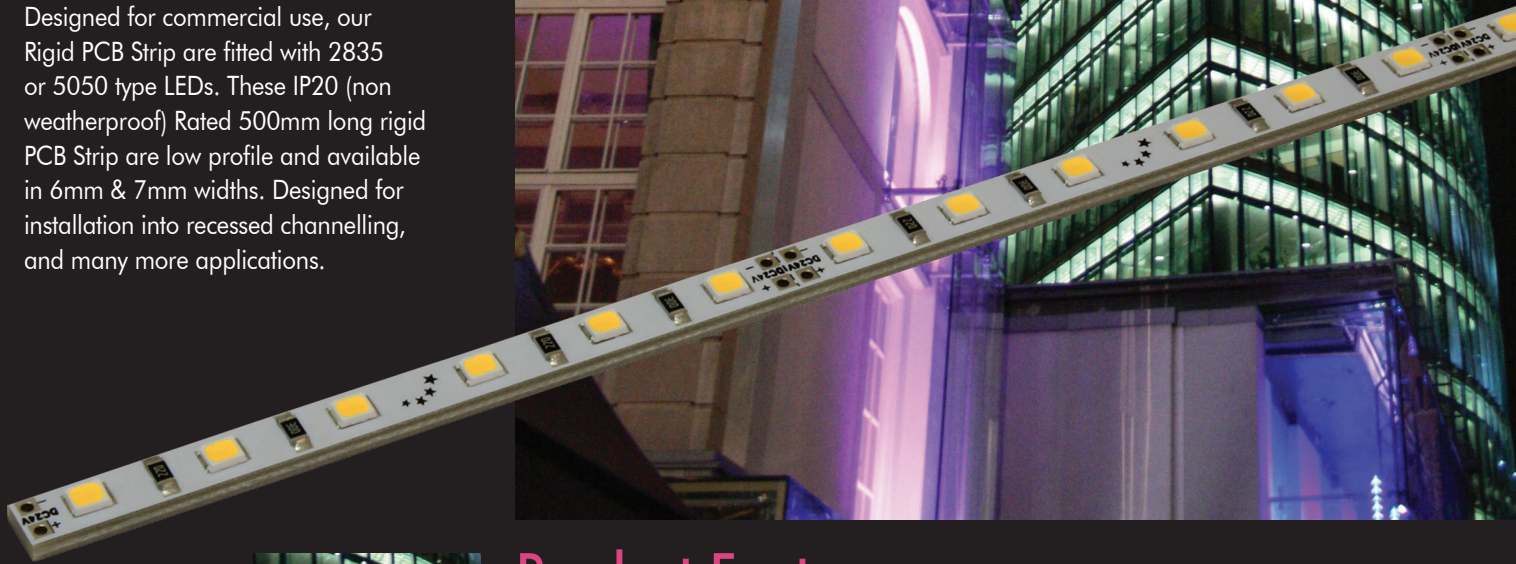


LED PCB Strip - Rigid

Designed for commercial use, our Rigid PCB Strip are fitted with 2835 or 5050 type LEDs. These IP20 (non weatherproof) Rated 500mm long rigid PCB Strip are low profile and available in 6mm & 7mm widths. Designed for installation into recessed channelling, and many more applications.



Product Features

- ★ Compact strip with Nationstar LED Technology
- ★ Epistar 2835 or 5050 LEDs
- ★ Energy saving and high efficiency rigid LED strip
- ★ Available in 3000k & 6000k
- ★ 42 LEDs per 500mm ~ 36 LEDs per 500mm on RGB
- ★ Cuttable every 71.4mm ~ 83.3mm on RGB
- ★ 50K hours working life
- ★ 110° beam angle
- ★ Suitable for domestic, commercial and retail internal lighting applications

0118 970 3856

www.powerled.uk.com

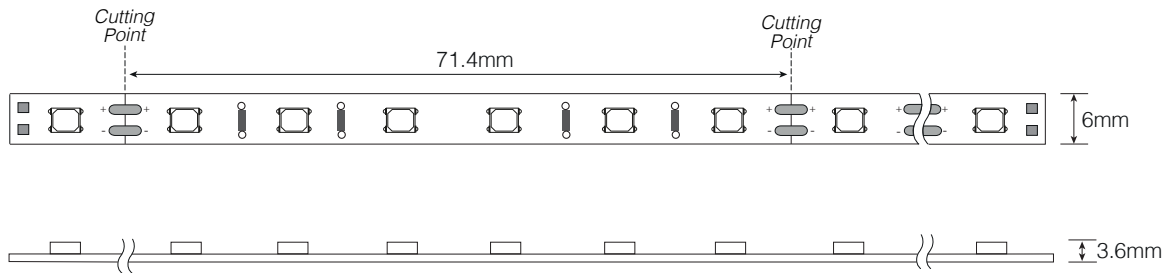
Power  LED®

LED PCB Strip - Rigid

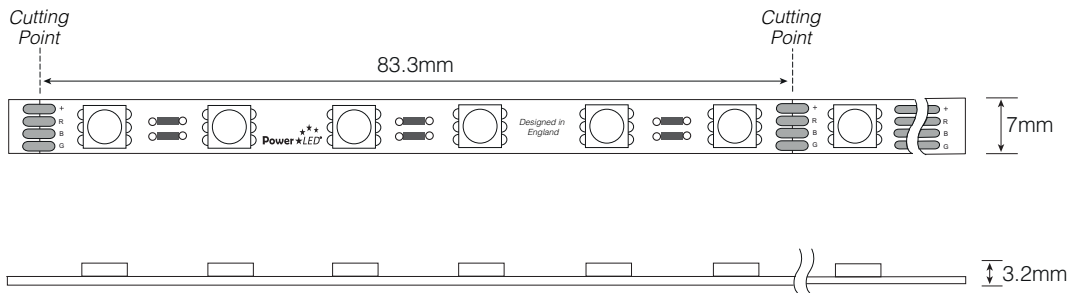
Part Code	R6-W2835-24-42-IP20-RS	R6-C2835-24-42-IP20-RS	R7-RGB5050-24-36-IP20
Lumen Output	65lm/W	75lm/W	15lm/W
Input Voltage	24Vdc	24Vdc	24Vdc
Power per metre	20.16W	20.16W	17.28W
Cutable Length	71.4mm	71.4mm	83.3mm
Luminous Flux	650lm	750lm	200lm
LED Qty	42 per 500mm	42 per 500mm	36 per 500mm
Beam Angle	110°	110°	110°
IP	IP20	IP20	IP20
Chip Size	2835	2835	5050
CCT	3000K	6000K	-



3000K & 6000K Rigid LED PCB Strip - R6



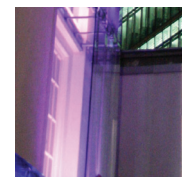
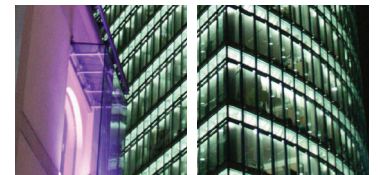
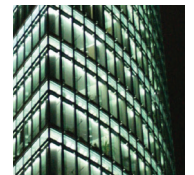
RGB Rigid LED PCB Strip - R7



RIGID R6 Warm White



RIGID R6 Cool White



IP Ratings explained



IP20 rated ~ Protection from finger sized objects.
No protection from water.