

pneumatic valve

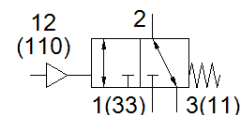
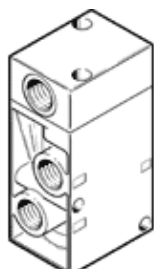
VL/O-3-1/4

Part number: 9984

FESTO

Depending on the choice of connection, normally-open or normally-closed function.

The valve can be used for vacuum when connected up to provide a normally-closed function (vacuum connected to port P1).



Data sheet

Feature	Value
Valve function	3/2 open/closed, monostable
Type of actuation	pneumatic
Width	30.5 mm
Standard nominal flow rate	800 l/min
Operating pressure	-0.95 ... 10 bar
Design structure	Poppet seat
Type of reset	mechanical spring
Protection class	IP65
Authorisation	c UL us - Recognized (OL)
Nominal size	7 mm
Grid dimension	32 mm
Exhaust-air function	throttleable
Sealing principle	soft
Assembly position	Any
Type of piloting	direct
Pilot air supply	external
Flow direction	reversible with restrictions
Freedom from overlap	No
Pilot pressure	1 ... 10 bar
Switching time off	26 ms
Switching time on	7 ms
Max. positive test pulse with logic 0	2,200 µs
Max. negative test pulse with logic 1	3,700 µs
Operating medium	Compressed air in accordance with ISO8573-1:2010 [7:4:4]
Note on operating and pilot medium	Lubricated operation possible (subsequently required for further operation)
Corrosion resistance classification CRC	1 - Low corrosion stress
Storage temperature	-20 ... 60 °C
Medium temperature	-10 ... 60 °C
Pilot medium	Compressed air in accordance with ISO8573-1:2010 [7:4:4]
Ambient temperature	-10 ... 60 °C
Product weight	230 g
Mounting type	Optional on manifold rail with through hole
Pilot air connection: 110	G1/8
Pilot air port 12	G1/8
Pneumatic connection, port 1	G1/4
Pneumatic connection, 11	G1/4
Pneumatic connection, port 2	G1/4
Pneumatic connection, port 3	G1/4
Pneumatic connection, 33	G1/4
Materials note	Conforms to RoHS
Material seals	NBR
Material housing	Aluminium die cast