

PRODUCT NUMBER

XXXXX-YYYYTLF

LEAD FREE OPTION
(SEE NOTES 1)

PACKAGING OPTIONS
(SEE NOTE 1)

HIGH TEMPERATURE PLASTIC
(SEE NOTE 1)

NO. OF
POSITIONS
(SEE NOTE 1)

PIN PLATING
(SEE SHEET 2)

BASE PART NO.

68000-X XX-XXX XXX LF

TAIL LENGTH (EXAMPLE BELOW)
3.0mm=030 12.8mm=128 (SEE NOTE 15 & 16)

MATING LENGTH (EXAMPLE BELOW)
5.0mm=050 25.5mm=255 (SEE NOTE 15 & 16)

TOTAL NUMBER OF POSITION
FROM 1 THRU 36 POS. (SEE NOTE 1)

PIN PLATING (SEE NOTE 13)

1=0.76µm Au

4= PURE TIN

8=0.36µm Au

BASE PART NO.

⊕ ⌀0.20/.51 (M) U (M) V (S)

NOTE 4

□ 0.25±.001

□ 0.64±.03

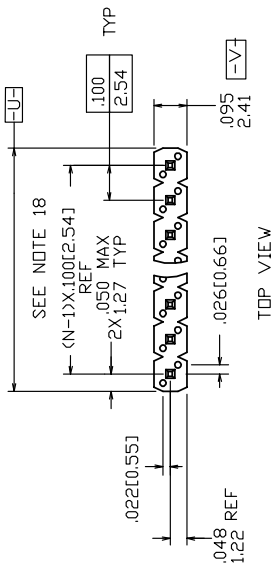
□ .013 MAX TYP

□ 0.33

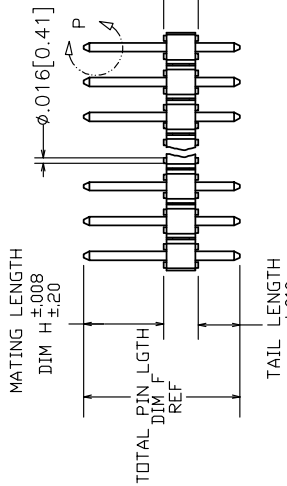
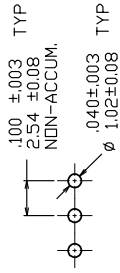
25±.5 TYP

4 SIDES

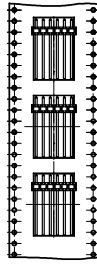
DETAIL P
TYP BOTH ENDS



RECOMMENDED HOLE PATTERN



USER DIRECTION



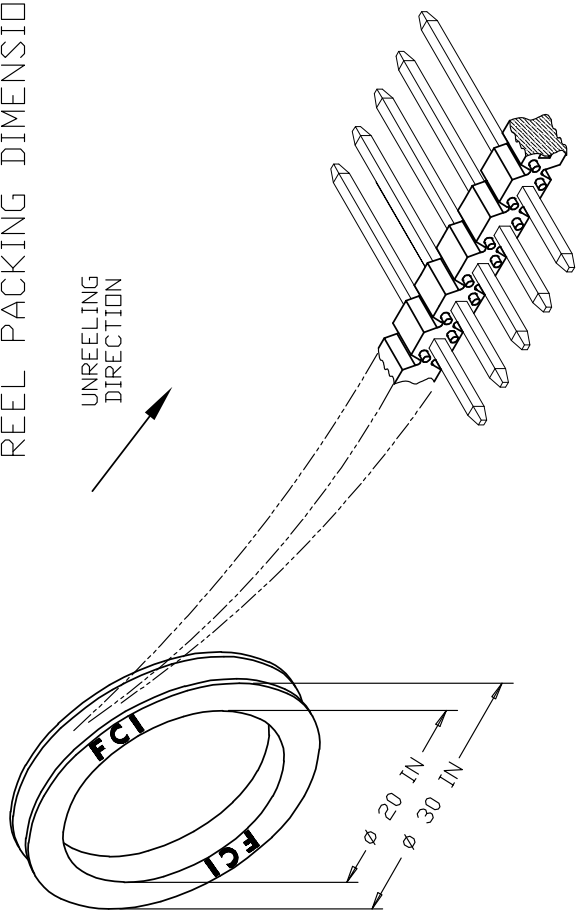
PACKAGE:

ONLY FOR 68000-406160035ALF

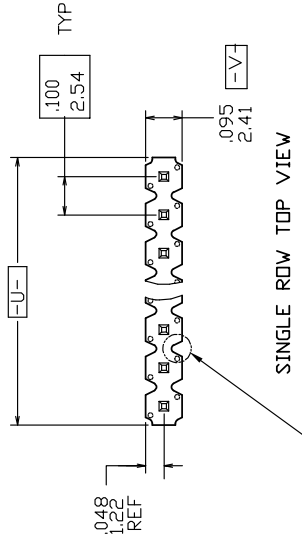
mat'l. code		surface		tolerance		projection		product family		
NOTES 2 & 3		ISO 1302		ISO 1101		1st angle		BERGSTIK		
tr	ec'n no	dk	date	tolerances unless otherwise specified		INCH/MM		title		
CY	ELX-N-01895	JZ	2012-06-12	angles	XX40/XX3	scale 1:1		BERGSTIK-II HEADER		
DA	ELX-N-6105	ZK	2013-10-22	linear	XX10.006/XX5.15	dwg no		.100/2.54cc SR STRAIGHT		
DB	ELX-N-1289	ZK	2014-03-27	0±.2	XXXXX0062/XXXX005	sheet 1 of 8 size		68000		
DC	ELX-N-28578	MZ	2017-11-23	T.BREW BAKER	01/05/95	type		Product Customer Drawing		
Sheet		revision	DC	DC	DC	DC	DC	DC	DC	
Index		sheet	1	2	3	4	5	6	7	
		Amphenol	FCI		8		9		6	

1	2	3	4	5	6																																																																	
<p>PIN PLATING CODES:</p> <table border="1"> <tr><td>XXXX-1YY</td><td>30u"/0.76u MIN (SEE NOTE 13) OVER 50u"/1.27u MIN NI</td></tr> <tr><td>XXXX-2YY</td><td>15u"/0.38u MIN (SEE NOTE 13) OVER 50u"/1.27u MIN NI</td></tr> <tr><td>XXXX-3YY</td><td>50u"/1.27u MIN (SEE NOTE 13) OVER 50u"/1.27u MIN NI</td></tr> <tr><td>XXXX-4YY</td><td>100u"/2.54u MIN OVER 50u"/1.27u MIN NI (SEE NOTE 14)</td></tr> <tr><td>XXXX-4YYHLF</td><td></td></tr> <tr><td>XXXX-5YY</td><td>15u"/0.38u MIN (SEE NOTE 13) OVER 50u"/1.27u MIN NI</td></tr> <tr><td>XXXX-6YY</td><td>30u"/0.76u MIN (SEE NOTE 13) OVER 50u"/1.27u MIN NI</td></tr> <tr><td>XXXX-7YY</td><td>30u"/0.76u MIN (SEE NOTE 13) OVER 50u"/1.27u MIN NI</td></tr> <tr><td>XXXX-8YY</td><td>15u"/0.38u MIN (SEE NOTE 13) OVER 50u"/1.27u MIN NI</td></tr> <tr><td>XXXX-9YY</td><td>15u"/0.38u MIN (SEE NOTE 13) OVER 50u"/1.27u MIN NI</td></tr> <tr><td>XXXX-0YY</td><td>30u"/0.76u MIN (SEE NOTE 13) OVER 50u"/1.27u MIN NI</td></tr> </table>						XXXX-1YY	30u"/0.76u MIN (SEE NOTE 13) OVER 50u"/1.27u MIN NI	XXXX-2YY	15u"/0.38u MIN (SEE NOTE 13) OVER 50u"/1.27u MIN NI	XXXX-3YY	50u"/1.27u MIN (SEE NOTE 13) OVER 50u"/1.27u MIN NI	XXXX-4YY	100u"/2.54u MIN OVER 50u"/1.27u MIN NI (SEE NOTE 14)	XXXX-4YYHLF		XXXX-5YY	15u"/0.38u MIN (SEE NOTE 13) OVER 50u"/1.27u MIN NI	XXXX-6YY	30u"/0.76u MIN (SEE NOTE 13) OVER 50u"/1.27u MIN NI	XXXX-7YY	30u"/0.76u MIN (SEE NOTE 13) OVER 50u"/1.27u MIN NI	XXXX-8YY	15u"/0.38u MIN (SEE NOTE 13) OVER 50u"/1.27u MIN NI	XXXX-9YY	15u"/0.38u MIN (SEE NOTE 13) OVER 50u"/1.27u MIN NI	XXXX-0YY	30u"/0.76u MIN (SEE NOTE 13) OVER 50u"/1.27u MIN NI																																											
XXXX-1YY	30u"/0.76u MIN (SEE NOTE 13) OVER 50u"/1.27u MIN NI																																																																					
XXXX-2YY	15u"/0.38u MIN (SEE NOTE 13) OVER 50u"/1.27u MIN NI																																																																					
XXXX-3YY	50u"/1.27u MIN (SEE NOTE 13) OVER 50u"/1.27u MIN NI																																																																					
XXXX-4YY	100u"/2.54u MIN OVER 50u"/1.27u MIN NI (SEE NOTE 14)																																																																					
XXXX-4YYHLF																																																																						
XXXX-5YY	15u"/0.38u MIN (SEE NOTE 13) OVER 50u"/1.27u MIN NI																																																																					
XXXX-6YY	30u"/0.76u MIN (SEE NOTE 13) OVER 50u"/1.27u MIN NI																																																																					
XXXX-7YY	30u"/0.76u MIN (SEE NOTE 13) OVER 50u"/1.27u MIN NI																																																																					
XXXX-8YY	15u"/0.38u MIN (SEE NOTE 13) OVER 50u"/1.27u MIN NI																																																																					
XXXX-9YY	15u"/0.38u MIN (SEE NOTE 13) OVER 50u"/1.27u MIN NI																																																																					
XXXX-0YY	30u"/0.76u MIN (SEE NOTE 13) OVER 50u"/1.27u MIN NI																																																																					
<p>NOTES</p> <p>1. PART NUMBER OPTIONS:</p> <p>PIN PLATING CODES (SEE ABOVE)</p> <p>HIGH TEMP. MATERIAL:</p> <p>PART NUMBERS WITH AND WITHOUT "H" WILL BE SUPPLIED WITH HIGH TEMPERATURE PLASTIC</p> <p>NUMBER OF POSITIONS :</p> <p>ANY NUMBER OF POSITIONS FROM 1 THRU 36.</p> <p>-X00H INDICATES BERGSTRIIP PRODUCT. SEE PAGE 3 FOR SPECIAL GEOMETRY OF THIS CONTINUOUS STRIP PRODUCT.</p> <p>AUTOMATED REELS WILL CONTAIN 36,000 PINS.</p> <p>SEE SPECIFIC PART NUMBERS FOR AVAILABILITY.</p> <p>PACKAGING :</p> <p>NO INDICATOR IS STANDARD PACKAGING IN POLY BAGS.</p> <p>EIGHT DIGIT PART NUMBERS FOLLOWED BY A "T" ARE PACKAGED IN TUBES. SEE SPECIFIC PART NUMBERS FOR AVAILABILITY.</p> <p>EIGHT DIGIT PART NUMBERS FOLLOWED BY A "C" ARE PACKAGED IN TUBES WITH PICKUP CAP APPLIED. (NOT TOOLED)</p> <p>BERGSTRIIP PART NUMBERS FOLLOWED BY</p> <p>A "B" ARE BULK PRICED.</p> <p>EIGHT DIGIT PART NUMBERS FOLLOWED BY A "A" ARE PACKAGED IN TAPE AND REEL WITH PICKUP CAP APPLIED.</p> <p>LEAD FREE :</p> <p>ADD "LF" SUFFIX AT THE END OF PART NUMBER FOR LEAD FREE</p> <p>2. BODY MATERIAL :</p> <p>BERGSTIK: MANUFACTURER'S OPTION OF NYLON, PCT GLASS FIBER REINFORCED, OR LCP MINERAL FILLED FLAME RETARDANT PER UL-94V-0.</p> <p>COLOR : BLACK</p> <p>BERGSTRIIP : PRODUCED WITH HIGH TEMPERATURE LCP THERMOPLASTIC, FLAME RETARDANT PER UL-94V-0.</p> <p>COLOR : BLACK</p> <p>PART NUMBERS WITH AND WITHOUT "H" SUFFIX WILL WITHSTAND EXPOSURE TO 260°C PEAK TEMPERATURE FOR 20 SECONDS IN WAVE SOLDER, INFRA-RED OR VAPOR PHASE SOLDER PROCESS.</p>																																																																						
<p>3. PIN MATERIAL : PHOS-BRONZE.</p> <p>4. MEASURED WITH PART IN RESTRAINED CONDITION.</p> <p>5. TWO SIDES OF PIN TIPS NOT PLATED. TYPICAL BOTH ENDS.</p> <p>6. 2LBS/0.9KG MIN PIN RETENTION IN EITHER DIRECTION.</p> <p>7. PIN CANNOT PROTRUDE PAST EDGE OF HOUSING. MUST BE .005±.005/.13±.13 FROM END OF HOUSING HOLE.</p> <p>8. MILITARY BERGSTIK HEADER</p> <p>P/N XXXXX-YYY-MIL.</p> <p>NOT AVAILABLE.</p> <p>9. ±.010/0.25 TOL APPLIES TO ALL "G" TAILS EXCEPT INDICATED PARTS ON TABLE WHERE +.010/0.25 -.000/0.00 APPLIES.</p> <p>10. INDICATED PART NUMBERS ARE PRODUCED AND SOLD IN THE TAIWAN/SINGAPORE AREAS. THESE ARE NOT AVAILABLE IN BERGSTRIIP CONTINUOUS STRIP.</p> <p>11. NOTCH CONFIGURATION WILL VARY PER VENDOR'S DISCRETION.</p> <p>12. THESE PRODUCTS MEETS EUROPEAN UNION DIRECTIVES AND OTHER COUNTRY REGULATION AS DESCRIBED IN GS-22-008.</p> <p>13. PLATING OPTIONS:</p> <p>PERFORMANCE PLATING WILL BE EITHER GOLD OR GXT ON POST OR TAIL, OPTIONALLY (78~295u"/2~7.5u) TIN ON TAIL.</p> <p>14. *THIS PRODUCT HAS 100% TIN PLATING IN THE INTERFACE AND HAS NOT BEEN TESTED FOR WHISKER GROWTH IN ALL INTERCONNECT ENVIRONMENTS.*</p> <p>15. THE DAL DON'T EXCEED 34.5mm</p> <p>16. INCREMENTS BY 0.1mm IN LENGTHS ONLY</p> <p>17. FOR SPECIAL PACKAGING REQUEST PLEASE CONTACT PRODUCT MANAGER FOR AVAILABILITY</p> <p>18. TO DETERMINE DIMENSIONS:</p> <p>N=NUMBER OF POSITION PER ROW</p> <p>EXAMPLE: 10 PDS. N X .100/2.54</p> <p>19. 68000-406160035ALF IS SPECIAL PART NUMBER, IT IS 6PIN, MATING LENGTH IS 16mm. TAIL LENGTH IS 3.5mm. AND PACKAGE IS TAPE AND REEL AND NO CAP.</p>																																																																						
<table border="1"> <tr> <td>mat'l. code</td> <td>surface</td> <td>tolerance</td> <td>projection</td> <td>product family</td> </tr> <tr> <td>NOTES 2 & 3</td> <td>ISO 1302</td> <td>AS 1100</td> <td></td> <td>BERGSTIK</td> </tr> <tr> <td>tr. ech no</td> <td>date</td> <td>angles</td> <td>INCH/MM</td> <td>title</td> </tr> <tr> <td>DC</td> <td></td> <td>linear</td> <td></td> <td>BERGSTIK-II HEADER</td> </tr> <tr> <td></td> <td></td> <td>xx40/xx3</td> <td>scale 1:1</td> <td>.100/2.54cc SR STRAIGHT</td> </tr> <tr> <td></td> <td></td> <td>xxxx006/xxxx15</td> <td></td> <td>sheet 2 of 8 size</td> </tr> <tr> <td></td> <td></td> <td>xxxx006/xxxx06</td> <td></td> <td>dwg no 68000</td> </tr> <tr> <td></td> <td></td> <td>dr T.BREWBAKER 01/05/95</td> <td></td> <td>type Product Customer Drawing</td> </tr> <tr> <td></td> <td></td> <td>engr T.HANNA 01/05/95</td> <td></td> <td></td> </tr> <tr> <td></td> <td></td> <td>chr J.MURPHY 01/05/95</td> <td></td> <td></td> </tr> <tr> <td></td> <td></td> <td>appd T.HANNA 01/05/95</td> <td></td> <td></td> </tr> <tr> <td>sheet</td> <td>revision</td> <td></td> <td></td> <td></td> </tr> <tr> <td>index</td> <td>sheet</td> <td></td> <td></td> <td></td> </tr> </table>						mat'l. code	surface	tolerance	projection	product family	NOTES 2 & 3	ISO 1302	AS 1100		BERGSTIK	tr. ech no	date	angles	INCH/MM	title	DC		linear		BERGSTIK-II HEADER			xx40/xx3	scale 1:1	.100/2.54cc SR STRAIGHT			xxxx006/xxxx15		sheet 2 of 8 size			xxxx006/xxxx06		dwg no 68000			dr T.BREWBAKER 01/05/95		type Product Customer Drawing			engr T.HANNA 01/05/95					chr J.MURPHY 01/05/95					appd T.HANNA 01/05/95			sheet	revision				index	sheet			
mat'l. code	surface	tolerance	projection	product family																																																																		
NOTES 2 & 3	ISO 1302	AS 1100		BERGSTIK																																																																		
tr. ech no	date	angles	INCH/MM	title																																																																		
DC		linear		BERGSTIK-II HEADER																																																																		
		xx40/xx3	scale 1:1	.100/2.54cc SR STRAIGHT																																																																		
		xxxx006/xxxx15		sheet 2 of 8 size																																																																		
		xxxx006/xxxx06		dwg no 68000																																																																		
		dr T.BREWBAKER 01/05/95		type Product Customer Drawing																																																																		
		engr T.HANNA 01/05/95																																																																				
		chr J.MURPHY 01/05/95																																																																				
		appd T.HANNA 01/05/95																																																																				
sheet	revision																																																																					
index	sheet																																																																					

REEL PACKING DIMENSIONS

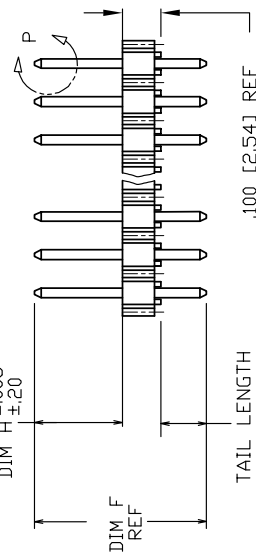


BERGSTRIPTM HEADER

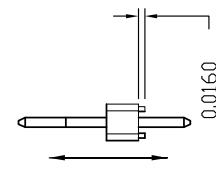


NOTE 11

MATING LENGTH
DIM H $\pm .008$
DIM H $\pm .20$



SINGLE ROW
SIDE VIEW



SINGLE ROW
END VIEW

NOTE 6

mat'l. code	surface	projection	product family
NOTES 2 & 3	ISO 1302	1st angle	BERGSTIK
tr. ech. no.	tolerances unless otherwise specified	INCH/MM	title
DC	angles	scale 1:1	BERGSTIK-II HEADER
date	0±2'	Amphenol FCI	.100/2.54cc SR STRAIGHT
	dr T.BREWBAKER 01/05/95	dwg no	sheet 3 of 8 size
	engr T.HANNA 01/05/95	68000	A3
	chr J.MURPHY 01/05/95	Product Customer	Drawing
	appd T.HANNA 01/05/95		
sheet	revision		
index	sheet		

PRODUCT NUMBER	TOTAL PIN LGTH		TAIL LENGTH		MATING LENGTH		MATING DIM H		MATING DIM H	MATING DIM H	MATING METRIC	PACKAGING	NOTES	BERGSTRIIP™ AVAILABLE	LF OPTION
	DIM F	ENGLISH	DIM G	ENGLISH	DIM G	METRIC	DIM H	METRIC							
55492-XYX	0.315	8.00	0.095	2.41	0.120	3.05	0.310	7.87	NO	DB	POLY-BAGS				
60017-XYX	0.620	15.75	0.210	5.33	0.310	7.87	0.310	7.87	NO	DB	POLY-BAGS				
60018-XYX	0.660	16.76	0.250	6.35	0.310	7.87	0.310	7.87	NO	DB	POLY-BAGS				
63334-XYX	0.435	11.05	0.095	2.41	0.240	6.10	0.240	6.10	NO	DB	POLY-BAGS				
68000-XYX	0.425	10.80	0.095	2.41	0.230	5.84	0.230	5.84	YES	NOTE 1,12	POLY BAGS				
68001-XYX	0.450	11.43	0.120	3.05	0.230	5.84	0.230	5.84	YES		POLY BAGS/TUBES				
68002-XYX	0.480	12.19	0.150	3.81	0.230	5.84	0.230	5.84	YES		POLY BAGS				
68003-XYX	0.525	13.34	0.195	4.95	0.230	5.84	0.230	5.84	NO	DB	POLY-BAGS				
68004-XYX	0.525	13.34	0.107	2.72	0.318	8.08	0.318	8.08	YES		POLY BAGS				
68024-XYX	0.568	14.43	0.150	3.81	0.318	8.08	0.318	8.08	YES		POLY BAGS				
68031-XYX	0.513	13.03	0.183	4.65	0.230	5.84	0.230	5.84	NO		POLY BAGS				
68032-XYX	0.543	13.79	0.213	5.41	0.230	5.84	0.230	5.84	NO	DB	POLY-BAGS				
68033-XYX	0.708	17.98	0.473	12.01	0.135	3.43	0.135	3.43	NO		POLY BAGS				
68415-XYX	0.615	15.62	0.115	2.92	0.400	10.16	0.400	10.16	NO		POLY BAGS				
68416-XYX	0.813	20.65	0.483	12.27	0.230	5.84	0.230	5.84	NO		POLY BAGS				
68418-XYX	0.730	18.54	0.400	10.16	0.230	5.84	0.230	5.84	NO		POLY BAGS				
68422-XYX	0.631	16.03	0.213	5.41	0.318	8.08	0.318	8.08	NO		POLY BAGS				
68443-XYX	0.755	19.18	0.425	10.80	0.230	5.84	0.230	5.84	NO	DB	POLY-BAGS				
68456-XYX	0.825	20.96	0.115	2.92	0.610	15.49	0.610	15.49	NO	DB	POLY-BAGS				
68457-XYX	0.548	13.92	0.130	3.30	0.318	8.08	0.318	8.08	NO		POLY BAGS				
68465-XYX	0.925	23.50	0.595	15.11	0.230	5.84	0.230	5.84	NO	DB	POLY-BAGS				
68466-XYX	0.925	23.50	0.128	3.25	0.697	17.70	0.697	17.70	NO		POLY BAGS				
68472-XYX	0.913	23.19	0.413	10.49	0.400	10.16	0.400	10.16	NO	DB	POLY-BAGS				
68479-XYX	0.718	18.24	0.388	9.86	0.230	5.84	0.230	5.84	NO	DB	POLY-BAGS				
68483-XYX	0.835	21.21	0.417	10.59	0.318	8.08	0.318	8.08	NO	DB	POLY-BAGS				
68487-XYX	0.705	17.91	0.110	2.79	0.495	12.57	0.495	12.57	NO	DB	POLY-BAGS				
68489-XYX	1.095	27.81	0.765	19.43	0.230	5.84	0.230	5.84	NO	DB	POLY-BAGS				
68490-XYX	1.025	26.04	0.695	17.65	0.230	5.84	0.230	5.84	NO	DB	POLY-BAGS				
68497-XYX	0.612	15.54	0.085	2.16	0.427	10.85	0.427	10.85	NO		POLY BAGS				
68603-XYX	0.555	14.10	0.120	3.05	0.335	8.51	0.335	8.51	NO		POLY BAGS				
68604-XYX	0.600	15.24	0.120	3.05	0.380	9.65	0.380	9.65	NO	NOTE 1,12	POLY BAGS				

mat'l. code NOTES 2 & 3		surface ISO 1302		tolerance ISO 1100		projection 1st angle		product family BERGSTIK	
tr	ech no	dkr	date	tolerances unless otherwise specified		INCH/MM		title	
CY	ELX-N-01895	JZ	2012-06-12	angles	XX40/XX3	BERGSTIK-II HEADER		sheet 4 of 8 size	
DA	ELX-N-6105	ZK	2013-10-22	linear	XXX0.06/XXX.15	.100/2.54cc SR STRAIGHT		68000	
DB	ELX-N-1729	ZK	2014-03-27	0±2°	XXX0.06/XXX.15	scale 1:1		type Product Customer Drawing	
DC	ELX-N-2878	NZ	2017-11-23	dir	T.BREW BAKER 01/05/95	Amphenol FCI		dwg no	
				engr	T.HANNA 01/05/95			8000	
				chr	J.MURPHY 01/05/95			sheet 4 of 8 size	
				appd	T.HANNA 01/05/95			type Product Customer Drawing	
sheet	revision	DC	DC	DC	DC	DC	DC	DC	DC
index	sheet	1	2	3	4	5	6	7	8

form: A3-2016-02-24

2016 AFCl

Amphenol
FCI

PRODUCT NUMBER	TOTAL PIN LGTH		TAIL LENGTH		MATING LENGTH		BERGSTRIPTM AVAILABLE		LF OPTION
	DIM F	DIM E	DIM G	DIM H	DIM I	DIM J	DIM K	DIM L	
68629	0.621	15.77	0.203	5.16	0.318	8.08	NO	NO	OB
68630	0.603	15.32	0.273	6.93	0.230	5.84	NO	NO	OB
68631	0.703	17.86	0.203	5.16	0.400	10.16	NO	NO	OB
68632	0.743	18.87	0.413	10.49	0.230	5.84	NO	NO	OB
68633	0.643	16.33	0.225	5.72	0.318	8.08	NO	NO	NOTE 1,12
68634	1.013	25.73	0.683	17.35	0.230	5.84	NO	NO	OB
68642	0.913	23.19	0.583	14.81	0.230	5.84	NO	NO	OB
68652	1.470	37.34	0.670	17.02	0.700	17.78	NO	NO	OB
68653	0.735	18.67	0.095	2.41	0.540	13.72	NO	NO	OB
68654	1.050	26.67	0.670	17.02	0.280	7.11	NO	NO	OB
68655	0.708	17.98	0.290	7.37	0.318	8.08	NO	NO	OB
68656	1.113	28.27	0.613	15.57	0.400	10.16	NO	NO	OB
68657	0.588	14.94	0.368	9.35	0.120	3.05	NO	NO	OB
68658	0.820	20.83	0.130	3.30	0.590	14.99	NO	NO	OB
68659	0.608	15.44	0.398	10.11	0.110	2.79	NO	NO	OB
68686	1.016	25.81	0.458	11.63	0.458	11.63	NO	NO	OB
68689	0.913	23.19	0.213	5.41	0.600	15.24	NO	NO	OB
68705	0.395	10.03	0.095	2.41	0.200	5.08	NO	NO	OB
68717	0.615	15.62	0.285	7.24	0.230	5.84	NO	NO	OB
68730	0.555	14.10	0.225	5.72	0.230	5.84	NO	NO	OB
68731	0.880	22.35	0.440	11.18	0.340	8.64	NO	NO	OB
68735	1.016	25.81	0.520	13.21	0.396	10.06	NO	NO	OB
68755	1.166	29.62	0.533	13.54	0.533	13.54	NO	NO	OB
68760	0.803	20.40	0.353	8.97	0.350	8.89	NO	NO	OB
68762	0.588	14.94	0.213	5.41	0.275	6.99	NO	NO	OB
68771	0.470	11.94	0.100	2.54	0.270	6.86	NO	NO	NOTE 1,12
68781	0.691	17.55	0.273	6.93	0.318	8.08	NO	NO	OB

mat'l. code	surface	tolerance	projection	product family
NOTES 2 & 3	ISO 1302	ISO 1101	1st angle	BERGSTIK
tr ech no	angles	INCH/MM	title	BERGSTIK-II HEADER
date	0±2°	scale 1:1	dwg no	.100/2.54cc SR STRAIGHT
	dr T.BREWBAKER	Amphenol FCI	sheet no	5 of 8 size
	engr T.HANNA		part no	68000
	chr J.MURPHY		type	Product Customer Drawing
	appd T.HANNA			
sheet index	revision			

form: A3-2016-02-24

PRODUCT NUMBER	TOTAL PIN LGTH		TAIL LENGTH		MATING LENGTH		BERGSTRIPTM AVAILABLE		LF OPTION
	DIM F	DIM E	DIM G	DIM H	DIM I	DIM J	NOTES	PACKAGING	
68795-XY	0.500	1.270	0.062	0.538	0.338	0.59		POLY-BAGS	OB
68796-XY	0.633	1.608	0.423	0.74	0.410	0.79		POLY-BAGS	OB
68797-XY	0.413	1.049	0.213	0.541	0.100	0.54		POLY BAGS	NOTE 1,12
69148-XY	0.442	1.143	0.060	0.350	0.350	0.89		POLY-BAGS	OB
69152-XY	0.720	1.829	0.120	0.500	0.500	1.270		POLY-BAGS/TUBES	OB
69173-XY	0.530	1.346	0.135	0.295	0.295	0.749		POLY BAGS	
69188-XY	0.751	1.908	0.333	0.46	0.318	0.808		POLY BAGS	
69751-XY	0.440	1.118	0.170	0.32	0.170	0.32	NOTE 10	POLY-BAGS	OB
71417-XY	0.664	1.687	0.115	0.292	0.449	1.140	NOTE 10	POLY-BAGS	OB
72260-XY	0.930	2.362	0.090	0.229	0.740	1.880		POLY-BAGS	OB
72323-XY	1.200	3.048	0.100	0.254	1.000	2.540		POLY-BAGS	OB
72457-XY	1.100	2.794	0.090	0.229	0.910	2.311		POLY-BAGS	OB
73698-XY	1.100	2.794	0.120	0.305	0.880	2.235		POLY BAGS	
74464-XY	1.028	2.611	0.610	1.549	0.318	0.808		POLY-BAGS	OB
78240-XY	0.663	1.684	0.333	0.46	0.230	0.584		POLY-BAGS	OB
78287-XY	0.678	1.722	0.120	0.305	0.458	1.163		POLY-BAGS	OB
78290-XY	1.250	3.175	0.500	1.270	0.650	1.651		POLY BAGS	
78511-XY	0.538	1.367	0.120	0.305	0.318	0.808		POLY BAGS/TUBES	
78595-XY			NOT AVAILABLE						YES
78931-XY			NOT AVAILABLE						
78958-XY			NOT AVAILABLE						
78959-XY			NOT AVAILABLE						
78977-XY			NOT AVAILABLE						
78998-XY	0.430	1.092	0.155	0.394	0.175	0.445		POLY BAGS	NO
78999-XY			NOT AVAILABLE						
79428-XY	0.695	1.765	0.120	0.305	0.475	1.207		POLY-BAGS	NO
79849-XY	0.620	1.575	0.120	0.305	0.400	1.016		POLY-BAGS	NO

mat'l. code NOTES 2 & 3	surface ISO 1302	tolerance ISO 1101	projection 1st angle	product family BERGSTIK
tr. ech no. / date	angles linear	tolerance unless otherwise specified XX40/XX3 XXX4006/XXX15	INCH/MM	title BERGSTIK-II HEADER
DC	0±2'	dr T.BREWBAKER 01/05/95	scale 1:1	.100/2.54cc SR STRAIGHT
	engr T.HANNA 01/05/95			dwg no sheet 6 of 8 size
	chr J.MURPHY 01/05/95			68000
	appd T.HANNA 01/05/95			type Product Customer Drawing
sheet index	revision			

form: A3-2016-02-24

PRODUCT NUMBER	TOTAL PIN LGTH		TAIL LENGTH		MATING LENGTH		BERGSTRIPTM AVAILABLE		LF OPTION	
	DIM F	DIM G	DIM F	DIM G	DIM H	DIM H	NOTES	NOTES		
84918-XYH	0.340	0.120	0.120	0.120	0.120	0.120	3.05	POLY-BAGS	YES	OB
84924-XYH	0.370	0.150	0.150	0.150	0.120	0.120	3.05	POLY-BAGS	YES	OB
86506-XYX	0.440	0.120	0.120	0.120	0.220	0.220	5.59	POLY-BAGS	YES	OB
86579-XYX	0.450	0.120	0.120	0.120	0.230	0.230	5.84	POLY-BAGS	NO	OB
86634-XYX		NOT AVAILABLE								NOTE 1,12
86635-XYX		NOT AVAILABLE								
86636-XYX		NOT AVAILABLE								
86637-XYX		NOT AVAILABLE								
86638-XYX		NOT AVAILABLE								
86793-XYX	0.900	0.100	0.100	0.100	0.700	0.700	17.78	POLY-BAGS	NO	OB
86899-XYX	1.020	0.120	0.120	0.120	0.800	0.800	20.32	POLY-BAGS	NO	OB
87185-XYX	1.238	0.095	0.095	0.095	1.043	1.043	26.49	POLY BAGS	NO	OB
87204-XYX	0.895	0.120	0.120	0.120	0.675	0.675	17.15	POLY-BAGS	NO	OB
87244-XYX	1.000	0.120	0.120	0.120	0.780	0.780	19.81	POLY-BAGS	NO	OB
87502-XYH	1.130	0.110	0.110	0.110	0.920	0.920	23.37	POLY-BAGS	NO	OB
87827-XYX	0.380	0.120	0.120	0.120	0.160	0.160	4.06	POLY BAGS	NO	OB
87916-XYX	1.058	0.128	0.128	0.128	0.830	0.830	21.08	POLY BAGS	NO	OB
88005-XYX	0.536	0.095	0.095	0.095	0.344	0.344	8.66	POLY-BAGS	NO	OB
88706-XYX	0.900	0.100	0.100	0.100	0.700	0.700	17.78	POLY-BAGS	NO	OB
89232-XYX	0.325	0.000	0.000	0.000	0.230	0.230	5.84	POLY-BAGS	NO	OB

mat'l. code	surface	tolerance	projection	product family
NOTES 2 & 3	ISO 1302	ISO 1100	1st angle	BERGSTIK
tr. ech no	angles	tolerances unless otherwise specified	INCH/MM	title
date	linear	XXX/XX/XX	scale	BERGSTIK-II HEADER
	0±2'	XXX/006/XXX/15	1:1	.100/2.54cc SR STRAIGHT
	dr	XXX/002/XXX/05	Amphenol FCI	dwg no
	engr	T.HANNA		sheet 7 of 8 size
	chr	J.MURPHY		68000
	appd	T.HANNA		Product Customer
sheet index	revision			Drawing

form: A3-2016-02-24

PRODUCT NUMBER	TOTAL PIN LGTH		TAIL LENGTH		MATING LENGTH		LF OPTION
	DIM F	DIM G	DIM F	DIM G	DIM H	DIM H	
	ENGLISH	METRIC	ENGLISH	METRIC	ENGLISH	METRIC	BERGSTRIIP AVAILABLE
90522	0.668	16.97	0.135	3.43	0.433	11.00	NO
90547	0.508	12.90	0.095	2.41	0.313	7.95	NO
90719	0.384	9.75	0.106	2.69	0.178	4.52	NO
90726	0.440	11.18	0.110	2.79	0.230	5.84	YES
91276	1.225	31.12	0.225	5.72	0.900	22.86	NO
92020	0.372	9.45	0.094	2.39	0.178	4.52	NO
92418	0.572	14.53	0.118	3.00	0.354	8.99	NO
93167	0.394	10.01	0.059	1.50	0.235	5.97	NO
93287	0.585	14.86	0.085	2.16	0.400	10.16	NO
93944	0.941	23.90	0.130	3.30	0.711	18.06	NO
93992	0.415	10.54	0.085	2.16	0.230	5.84	NO
94063	0.376	9.55	0.138	3.51	0.138	3.51	NOTE 10
94094	0.592	15.04	0.314	7.98	0.178	4.52	NO
94544	0.550	13.97	0.130	3.30	0.330	8.38	NO
94611	0.320	8.13	0.095	2.41	0.125	3.18	NO
95017	0.560	14.22	0.060	1.52	0.400	10.16	NO
95103	1.064	27.03	0.433	11.00	0.531	13.49	NO
95104	0.370	9.40	0.126	3.20	0.144	3.66	NO
95648	0.655	16.64	0.155	3.94	0.400	10.16	NO
95655	1.164	29.57	0.095	2.41	0.969	24.61	NO
98001	0.610	15.49	0.420	10.67	0.090	2.29	NO
98136	0.475	12.07	0.095	2.41	0.280	7.11	NO
10004594	0.290	7.37	0.095	2.41	0.095	2.41	NO
10076764	0.479	12.19	0.114	2.9	0.265	6.75	YES
10103017	0.335	8.51	0.130	3.30	0.105	2.67	NO
10121349	0.626	15.9	0.120	3.05	0.406	10.3	NO

mat'l. code NOTES 2 & 3	surface ISO 1302	tolerance ISO 1101	projection 1st angle	product family BERGSTIK
tr. ech no. / dtr. date	angles linear	tolerances unless otherwise specified XX40/XX3 XXX006/XXS15	INCH/MM	title BERGSTIK-II HEADER
	0±2'	dr. T.BREW BAKER	scale 1:1	.100/2.54cc SR STRAIGHT
	engr. T.HANNA	01/05/95		sheet 8 of 8 size
	chr. J.MURPHY	01/05/95		68000
	appd. T.HANNA	01/05/95		Product Customer Drawing
sheet index	revision			