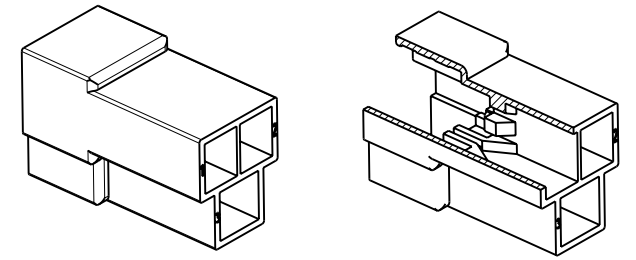
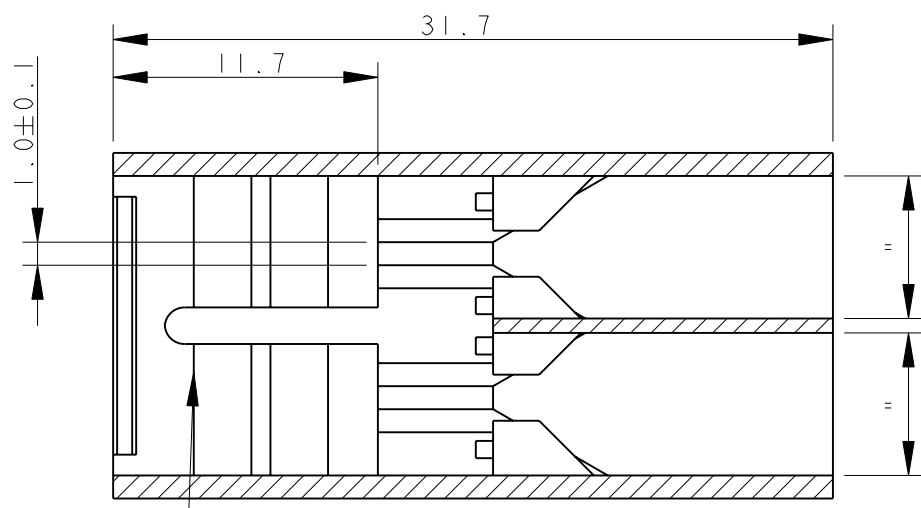


THIS DRAWING IS UNPUBLISHED. RELEASED FOR PUBLICATION 2002
 © COPYRIGHT 2002 ALL RIGHTS RESERVED.

LOC	DIST	REVISIONS			
P	LTR	DESCRIPTION	DATE	DWN	APVD
S4		ADDED 3-...-0, ET00-0137-04	25 JUN 2004	HY	CT
S5		REVISED PER ECO-09-026495	19DEC2009	KK	AEG
S6		ECR-10-022530	14JUN11	KK	HMR

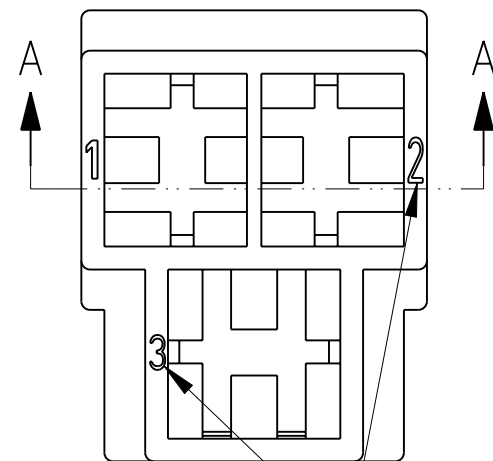
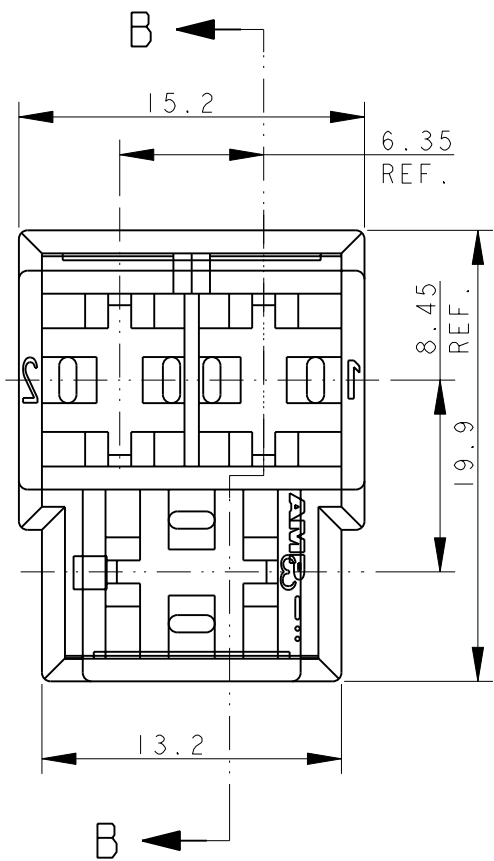
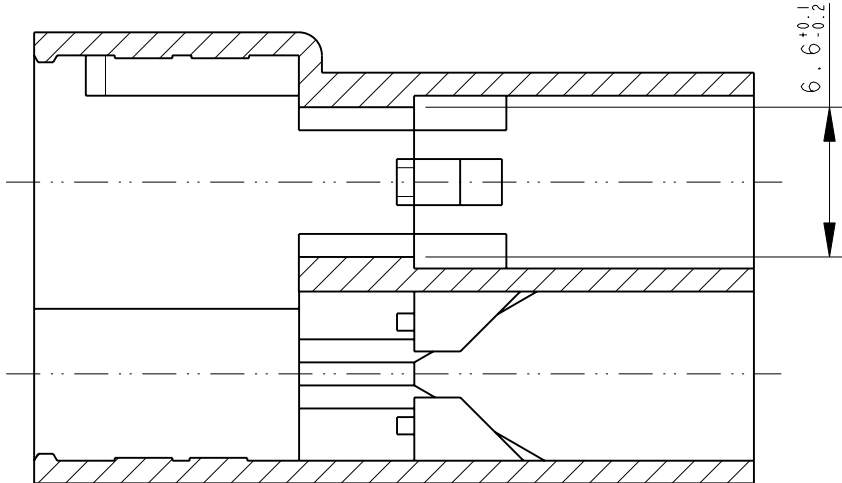
SECTION A - A



SCALE 1:1

TYPICAL CAVITY SUITABLE FOR .250" SR FASTIN-FASTON TAB CONTACT

SECTION B - B



CIRCUIT IDENTIFICATION

OBSOLETE	△3	NATURALE (NATURAL)	△1	3-180940-0	
OBSOLETE		NATURALE (NATURAL)	△2	2-180940-0	S
OBSOLETE		NATURALE (NATURAL)		1-180940-0	S
		GRIGIO (GRAY)		0-180940-7	S
		NERO (BLACK)		0-180940-5	S
		GIALLO (YELLOW)	△1	0-180940-4	S
		BLU (BLUE)		0-180940-3	S
OBSOLETE		ROSSO (RED)		0-180940-1	S
		NATURALE (NATURAL)		0-180940-0	S
NOTE		COLORE (COLOUR)	MATERIALE (MATERIAL)	PN	REV

- △1 PA 6.6 UNFILLED, UL 94-V2
- △2 PA 6 UNFILLED, GLOW WIRE TEST AT 750°C.
- △3 SAME AS 180940-0 BUT SPECIAL PACKAGING, ON CARTON BOX, TWO PLASTIC BAG WITH 1000 PIECES EACH.
- △4 OBSOLETE PARTS: OBSOLETE CIS STREAMLINING PER D.RENAUD/D.SINISI

THIS DRAWING IS A CONTROLLED DOCUMENT. DWN H. YAALI 07AUG2002
 CHK C TARTARI
 APVD -

DIMENSIONS: mm TOLERANCES UNLESS OTHERWISE SPECIFIED:
 0 PLC ±-
 1 PLC ±0.3
 2 PLC ±-
 3 PLC ±-
 4 PLC ±-
 ANGLES ±2°

MATERIAL SEE TABLE FINISH SEE TABLE

PRODUCT SPEC 108-20020
 APPLICATION SPEC -
 WEIGHT 3.1 g

STE TE Connectivity
 NAME FASTIN-FASTON* Connector, .250 sr. T TAB HOUSING 3 WAY
 SIZE A3 CAGE CODE 00779 DRAWING NO C-180940 RESTRICTED TO -
 CUSTOMER DRAWING SCALE 3:1 SHEET 1 OF 1 REV S6

Mouser Electronics

Authorized Distributor

Click to View Pricing, Inventory, Delivery & Lifecycle Information:

[TE Connectivity:](#)

[180940](#)