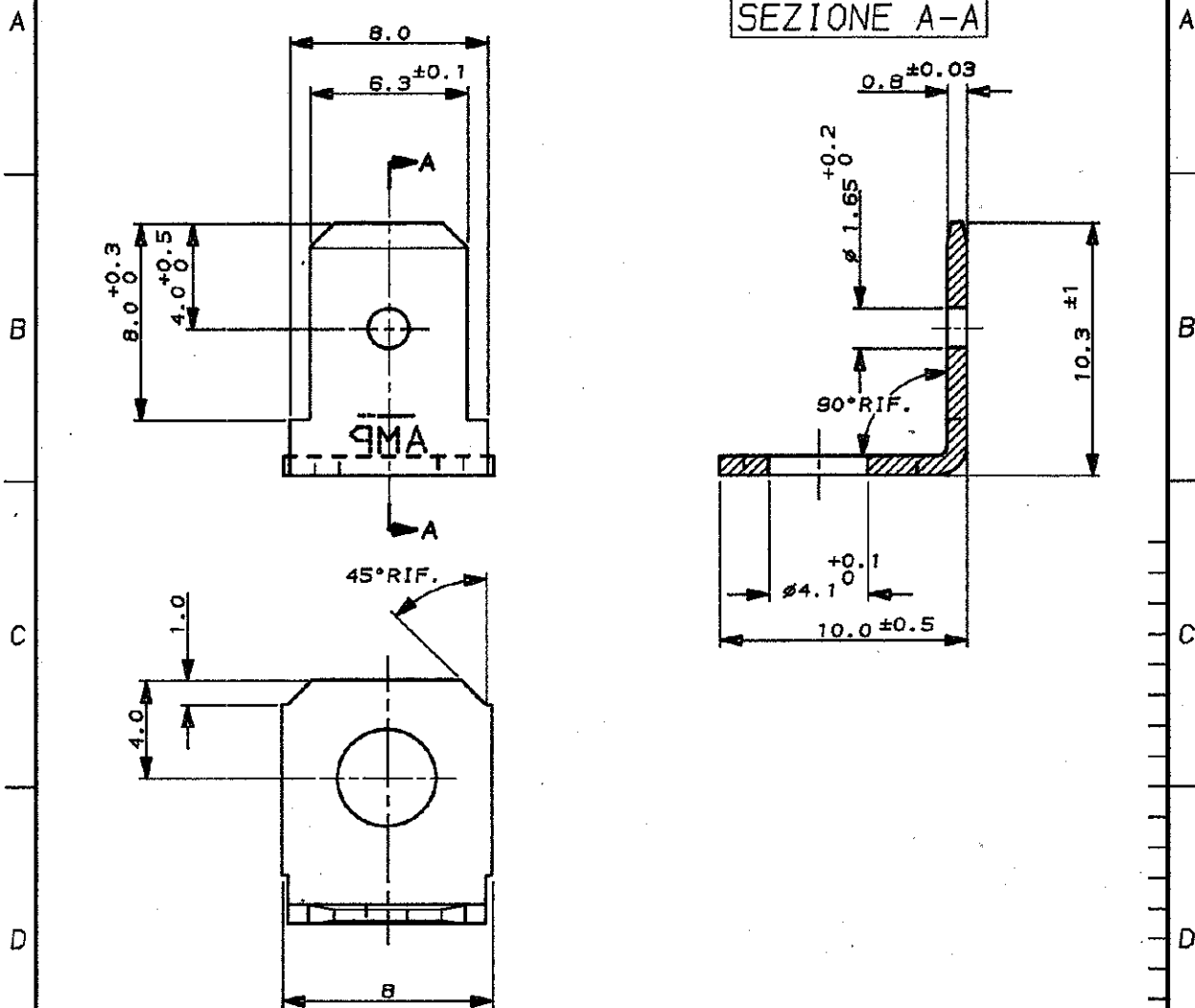


SCALA NON IMPEGNATIVA
(DO NOT SCALE)
DIMENSIONI IN mm
(DIMENSIONS IN mm)

METRIC

PROIEZIONE EUROPEA
(EUROPEAN PROJECTION)



STAGNATO 2µm min.	OTTONE	181953-2
NUDO		181953-1
FINITURA / COLORE (FINISH / COLOUR)	MATERIALE (MATERIAL)	NUMERO (PART NUMBER)

CUSTOMER DWG. FOR REFERENCE ONLY DISEGNO PER CLIENTE SOLO PER RIFERIMENTO

© COPYRIGHT 1990 BY AMP INCORPORATED, HARRISBURG, PA. ALL INTERNATIONAL RIGHT RESERVED. AMP PRODUCTS MAY BE COVERED BY U.S. AND FOREIGN PATENT AND/OR PATENT PENDING

TOLLERANZE, SE NON DIVERSAMENTE SPECIFICATO (TOLERANCES, UNLESS OTHERWISE SPECIFIED)	DIAM. ISOLANTE (INS. DIA. RANGE)	RANGO FILE (WIRE RANGE)	SCALA (SCALE)
± 0.3	-	-	4:1

ANGOLI
(ANGLES) ± 2°

AMP AMP ITALIA S.p.A.
Corso F.lli Cervi, 15
COLLENO (TORINO)

DIS. Bassano (GR.) 14 NOV. 90

DESCRIZIONE
(DESCRIPTION) FASTON TAB 6.35mm
(.250") Srs. SINGLE BENT 90° VERSION

CONT. ---
CONC. ---

LOC. SIZE NUMERO
(CAGE NO.)

APP. ---
(APP.)

REV. POS. 10
(REV.) (SHEET)

REV. 1	RIVISTO E RIDISEGNATO	-	-
REVISIONI (REVISION RECORD)		DIS. DATA (DATE)	DATE

DISTRIBUZIONE
(PRINT DIST.)

Mouser Electronics

Authorized Distributor

Click to View Pricing, Inventory, Delivery & Lifecycle Information:

[TE Connectivity:](#)

[181953-1](#)