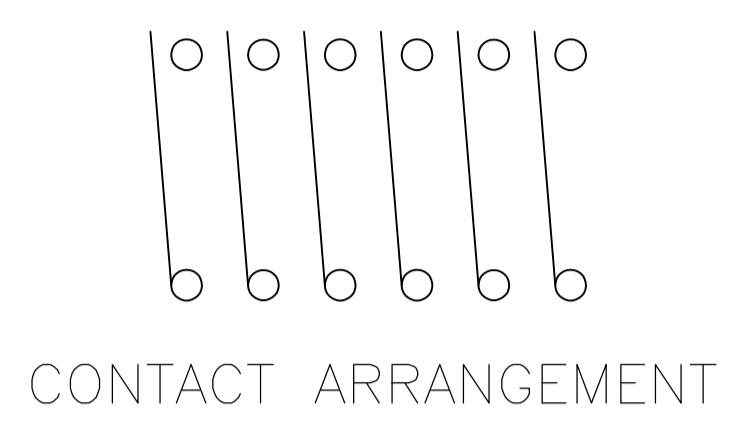
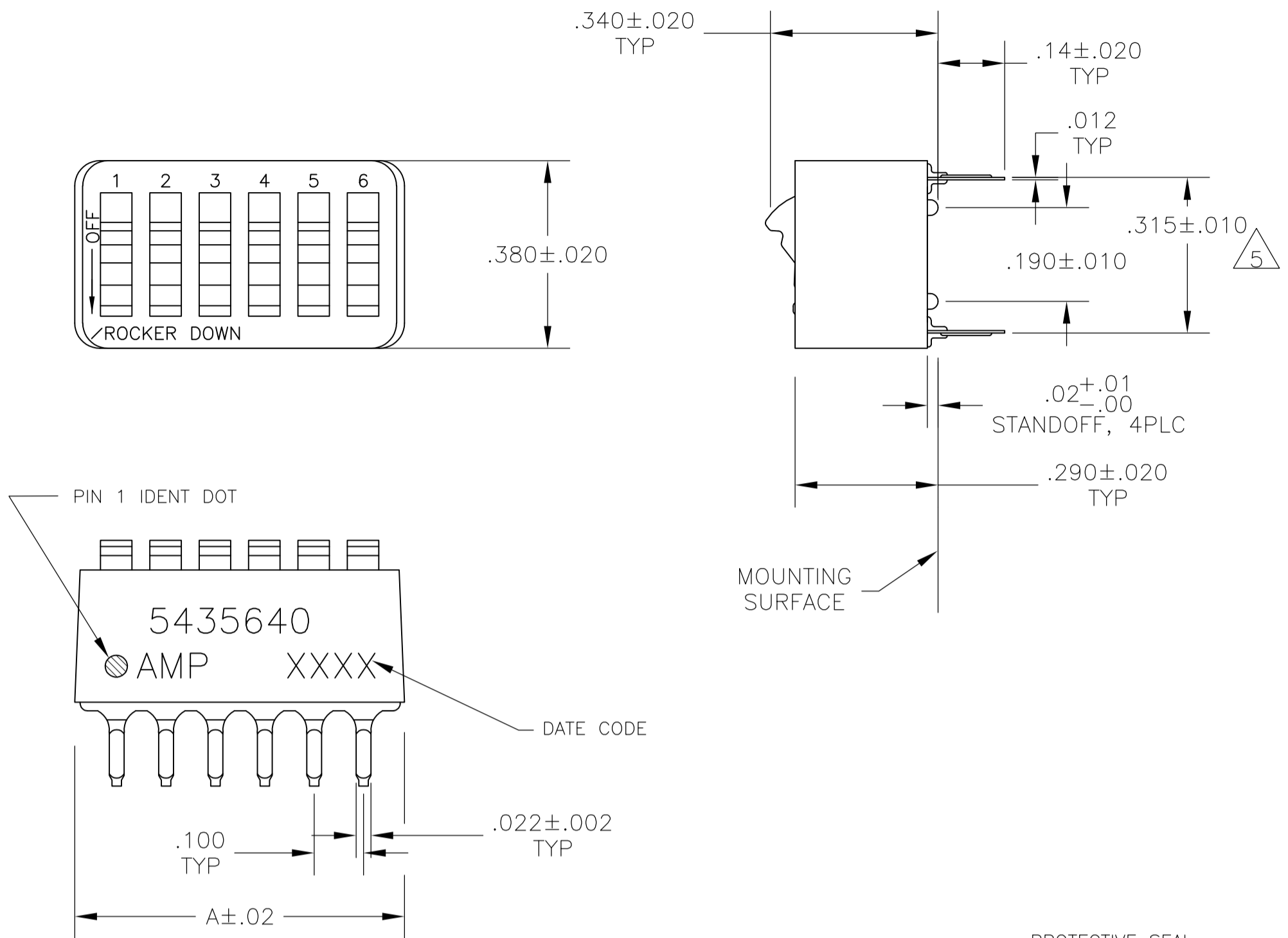


| LOC |     | DIST                      |         | REVISIONS |      |  |  |
|-----|-----|---------------------------|---------|-----------|------|--|--|
| P   | LTR | DESCRIPTION               | DATE    | DMN       | APVD |  |  |
| B   |     | REVISED PER ECO-08-006299 | 27MAR08 | HMR       | MS   |  |  |
| B1  |     | REVISED PER ECO-10-000444 | 19JAN10 | KK        | HMR  |  |  |



- 1 FOR ADDITIONAL SPECIFICATIONS SEE AMP PRODUCT SPEC 108-7532.
  - 2 SWITCH SHOWN IN OPEN POSITION.
  - 3 ALL CHARACTERS AND ROCKERS ARE WHITE, HOUSING IS BLUE.
  - 4 STAMPING WILL VARY ON 2 AND 3 POSITION SIDES DUE TO SPACE RESTRICTIONS.
  - 5 .315 DIMENSION APPLIES AT TERMINAL TIPS. TERMINALS ARE .300+.010 -.000 AT MOUNTING SURFACE.
  - 6 STRIPPABLE TRANSPARENT SEAL, SEE FIG 1.
  - 7 STRIPPABLE TRANSPARENT SEAL, SEE FIG 1.
  - 8 MATERIAL: HOUSING & ROCKERS- POLYESTER CONTACTS & SOLDER LEAD-COPPER ALLOY
  - 9 FINISH: CONTACTS- GOLD OVER NICKEL SOLDER LEAD- TIN OVER NICKEL
  - 10 ALL MATERIALS AND FINISHES SHALL COMPLY WITH EU DIRECTIVE 2002 /95/EC OF 27JAN2003(ROHS).
- 11 OBSOLETE PARTS: OBSOLETE CIS STREAMLINING PER D.RENAUD/D.SINISI

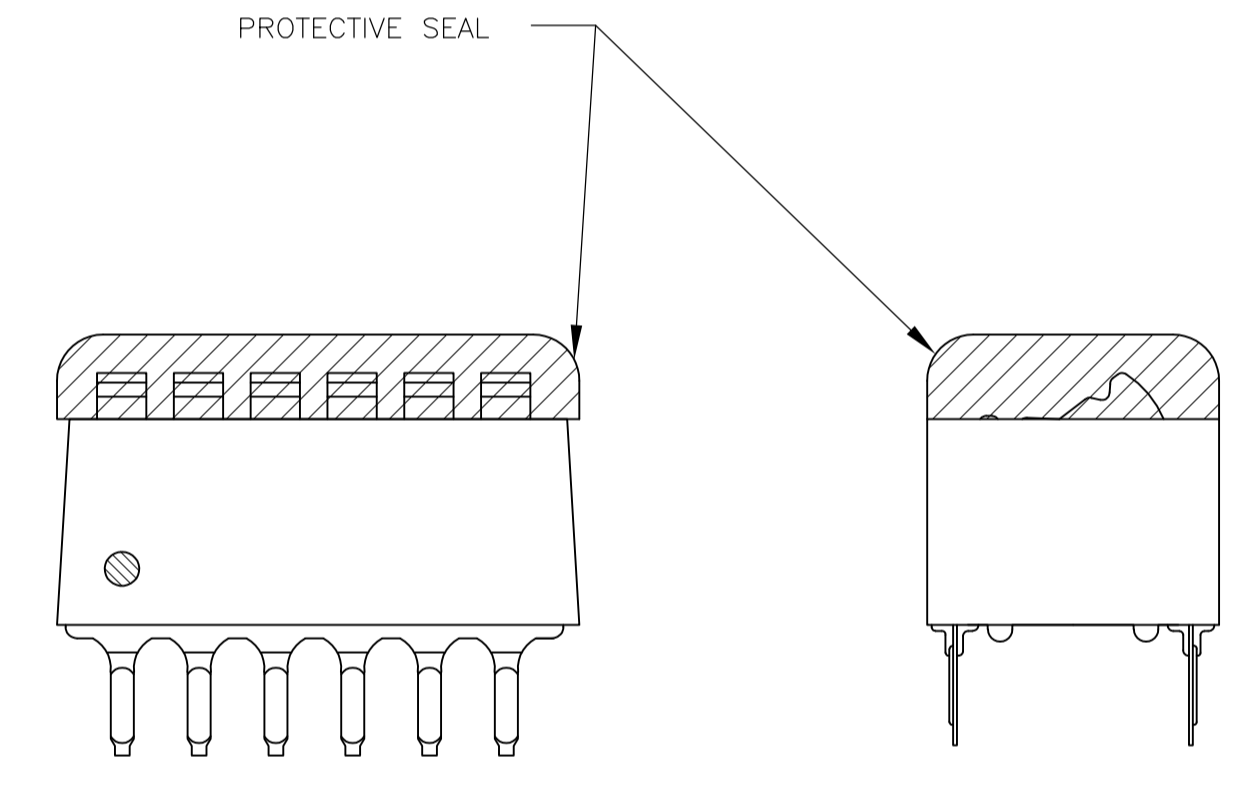


FIG 1

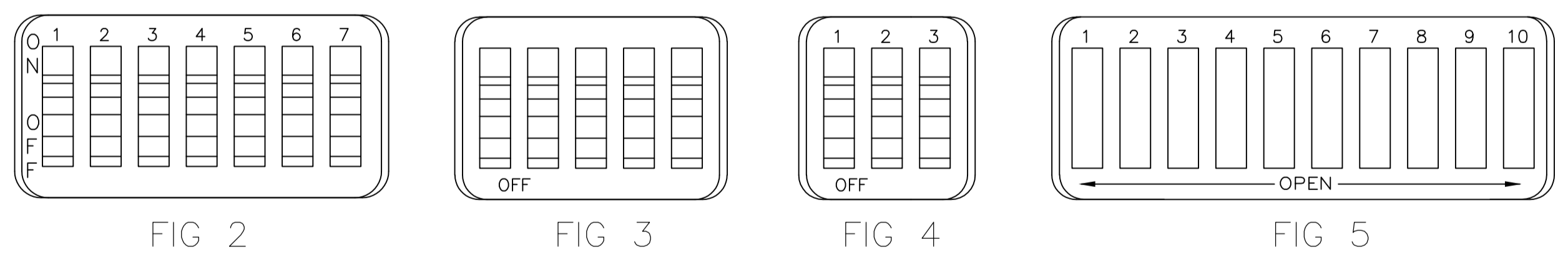


FIG 2

FIG 3

FIG 4

FIG 5

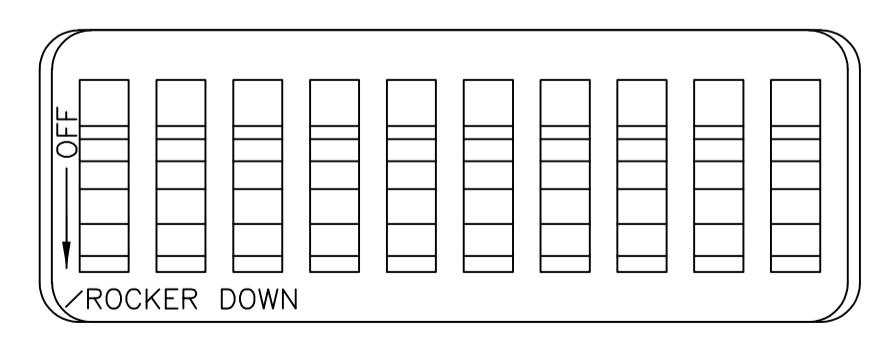


FIG 6

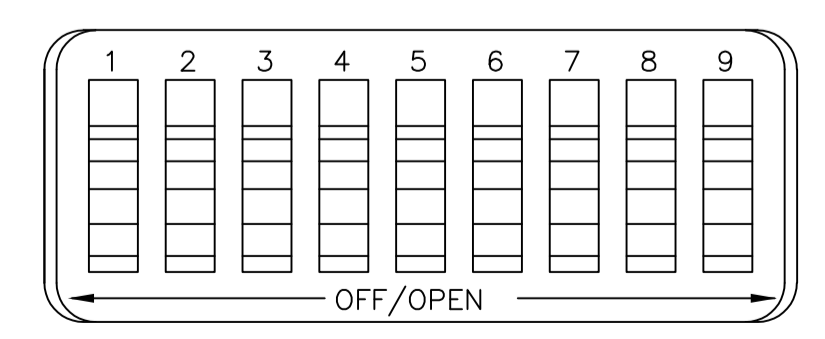


FIG 7

|             |          |            |             |              |
|-------------|----------|------------|-------------|--------------|
| OBSOLETE    | FIG 6    | 1.08       | 10          | -6-5435640-1 |
|             | FIG 7    | .58        | 5           | -6-5435640-0 |
|             |          | .48        | 4           | -5-5435640-9 |
| OBSOLETE    | FIG 5    | .88        | 8           | 5-5435640-8  |
|             |          | .98        | 9           | 5-5435640-7  |
|             | FIG 2    | .68        | 6           | -5-5435640-6 |
| OBSOLETE    | FIG 3    | .58        | 5           | -5-5435640-5 |
|             |          | .48        | 4           | 5-5435640-4  |
|             | FIG 5    | .88        | 8           | 5-5435640-3  |
| OBSOLETE    | FIG 4    | 1.08       | 10          | 5-5435640-1  |
|             |          | .88        | 8           | 5-5435640-0  |
|             | NONE     | .88        | 8           | -4-5435640-9 |
| AS SHOWN    | FIG 3    | .58        | 5           | 4-5435640-8  |
|             |          | 1.08       | 10          | -4-5435640-7 |
|             | AS SHOWN | 1.28       | 12          | -4-5435640-3 |
|             |          | 1.08       | 10          | 4-5435640-1  |
|             |          | .98        | 9           | 4-5435640-0  |
|             |          | .88        | 8           | 3-5435640-9  |
|             |          | .78        | 7           | 3-5435640-8  |
|             |          | .68        | 6           | 3-5435640-7  |
|             |          | .58        | 5           | 3-5435640-6  |
|             |          | .48        | 4           | 3-5435640-5  |
| FIG 4       | 1.28     | 12         | 3-5435640-2 |              |
|             | .38      | 3          | 3-5435640-0 |              |
| AS SHOWN    | FIG 4    | .28        | 2           | 2-5435640-9  |
|             |          | 1.08       | 10          | 5435640-7    |
|             | .98      | 9          | 5435640-6   |              |
|             | .88      | 8          | 5435640-5   |              |
|             | .68      | 6          | 5435640-4   |              |
|             | .58      | 5          | 5435640-3   |              |
|             | .48      | 4          | 5435640-2   |              |
| .78         | 7        | 5435640-1  |             |              |
| TOP MARKING | A        | NO OF POSN | PART NO.    |              |

THIS DRAWING IS A CONTROLLED DOCUMENT.

|                    |  |                       |   |
|--------------------|--|-----------------------|---|
| DIMENSIONS: INCHES | TOLERANCES UNLESS OTHERWISE SPECIFIED: | DIN BSV 08JAN2005     | Tyco Electronics Corporation                          |
| 0 PLC ± -          | 1 PLC ± -                              | CIK 13SEP05           | Harrisburg, PA 17105-3608                             |
| 2 PLC ± -          | 3 PLC ± .005                           | APVD M SARVER 13SEP05 | NAME  |
| 4 PLC ± -          | ANGLES ± -                             | PRODUCT SPEC          | SWITCH ASSY, DIP, TYPE C, 7100 SERIES, SPST, STANDARD |
| MATERIAL SEE NOTES | FINISH SEE NOTES                       | APPLICATION SPEC      | SIZE CAGE CODE DRAWING NO                             |
|                    |  | WEIGHT                | A1 00779 C=5435640                                    |
|                    |  | CUSTOMER DRAWING      | SCALE 4:1 SHEET 1 OF 1 REV B1                         |