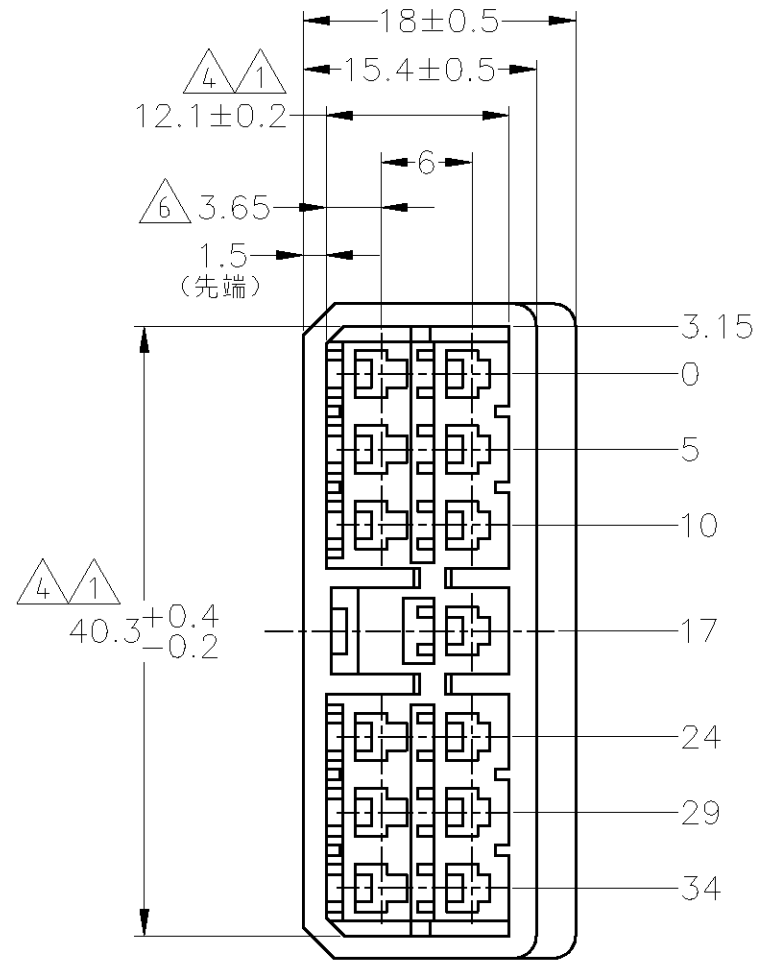
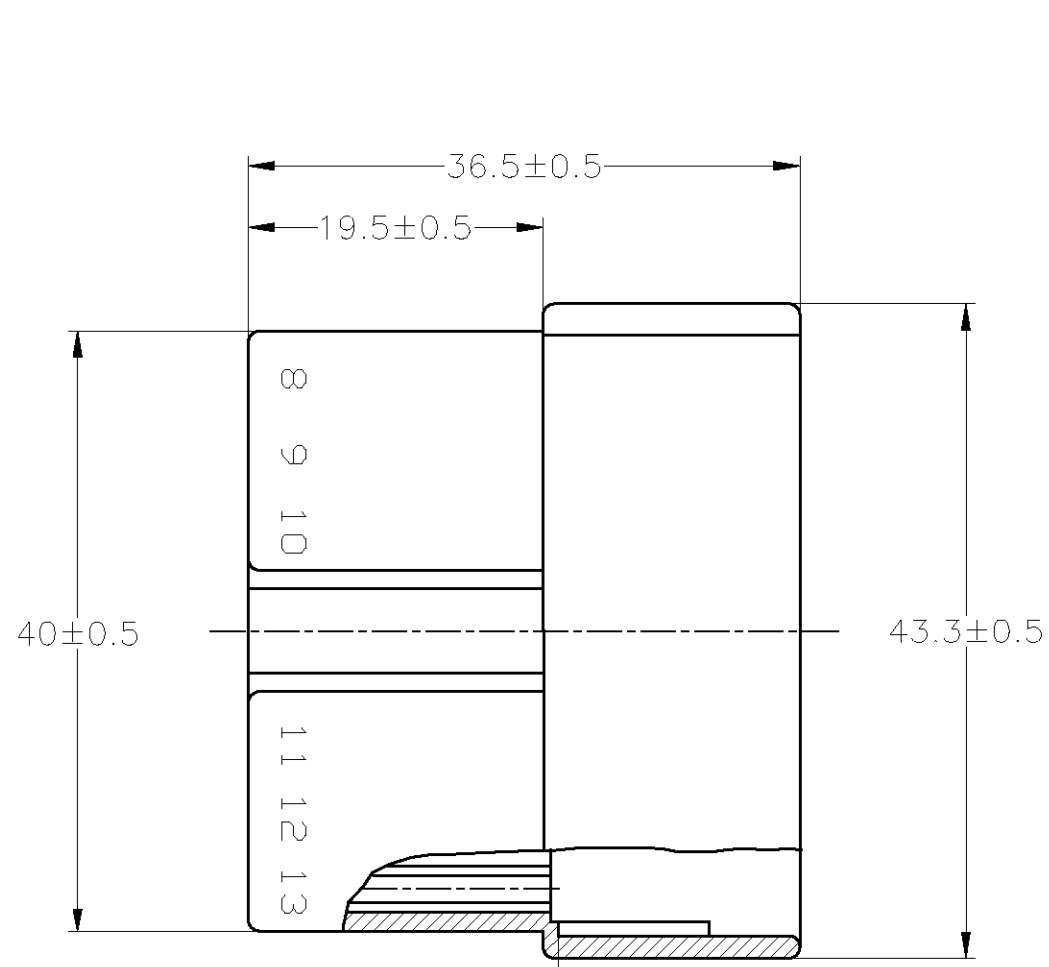
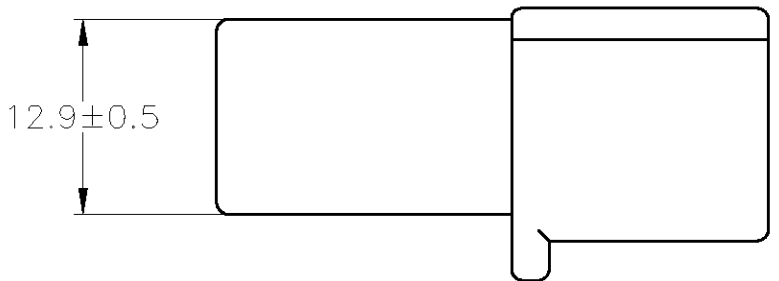


THIS DRAWING IS UNPUBLISHED. RELEASED FOR PUBLICATION  
 © COPYRIGHT BY TYCO ELECTRONICS CORPORATION. ALL INTERNATIONAL RIGHTS RESERVED.

| LOC | DIST | REVISIONS |         |               |         |     |      |
|-----|------|-----------|---------|---------------|---------|-----|------|
|     |      | P         | LTR     | DESCRIPTION   | DATE    | DWN | APVD |
| J   | -    | C2        | REVISED | ECR-10-004036 | 25FEB10 | TS  | KB   |



- ① IN COUPLING WITH THE PLUG HOUSING. MATING SATISFIES FUNCTION.
  - 2. APPLIDE CONTACT PN: 170221, 170222
  - 3. PRODUCT SPEC. NO. 108-5099
  - ④ TO BE MEASURED WITHIN 2mm FROM -A-
  - 5. IN COUPLING WITH THE PLUG HOUSING MATING FORCE 29.4N MAX. WITHOUT RECEPTACLE CONTACTS.
  - ⑥ CENTERLINE OF CONTACT
- ① 相手ハウジングと所定の機能を満たして嵌合できること。
  - 2. 使用コンタクト型番; 170221及び170222, その他。
  - 3. 製品規格番号; 108-5099
  - ④ -A- 面より2mmの範囲で測定。
  - 5. 相手ハウジングとの嵌合力は、29.4N 以上  
但し、コンタクトは含まない。
  - ⑥ コンタクトセンター迄の距離



|          |             |                |
|----------|-------------|----------------|
| OBSELETE | 灰 GRAY      | 171725-6       |
|          | 緑 GREEN     | 171725-4       |
| OBSELETE | 茶 BROWN     | 171725-3       |
| OBSELETE | 黒 BLACK     | 171725-2       |
|          | 自然色 NATURAL | 171725-1       |
|          | 色 COLOR     | 型番 PART NUMBER |

一般公差  
(GENERAL TOLERANCE)

|                  |              |
|------------------|--------------|
| 10 <sub>2</sub>  | : ±0.2       |
| 30 <sub>2</sub>  | > 10 : ±0.25 |
| 100 <sub>2</sub> | > 30 : ±0.3  |
| ANGLE : ±3°      |              |

|   |  |                         |  |                 |
|---|--|-------------------------|--|-----------------|
| THIS DRAWING IS A CONTROLLED DOCUMENT.      |  | DWN T.SHINOHARA 14MAR07 | Tyco Electronics Corporation<br>Kawasaki, Japan      |                 |
| DIMENSIONS: 単位: 耗 mm                        |  | CHK K.BETSUI 14MAR07    | NAME 名称  |                 |
| TOLERANCES UNLESS OTHERWISE SPECIFIED: 一般公差 |  | APVD K.BETSUI 14MAR07   | MULTI-INTER LOCK CONNECTOR<br>13POSITION CAP HOUSING |                 |
| 0 PLC ±-                                    |  | PRODUCT SPEC 製品規格       | SIZE A3  | CAGE CODE 00779 |
| 1 PLC ±-                                    |  | SEE NOTE 3              | DRAWING NO. 171725                                   | RESTRICTED TO   |
| 2 PLC ±-                                    |  | APPLICATION SPEC 取付適用規格 | SCALE 2:1  | SHEET 1 OF 1    |
| 3 PLC ±-                                    |  | WEIGHT -                | REV C2   |                 |
| 4 PLC ±-                                    |  | CUSTOMER DRAWING        |  |                 |
| ANGLES ±-                                   |  |                         |  |                 |
| FINISH 仕上 -                                 |  |                         |  |                 |
| MATERIAL 材料 66 NYLON (UL94V-2)              |  |                         |  |                 |