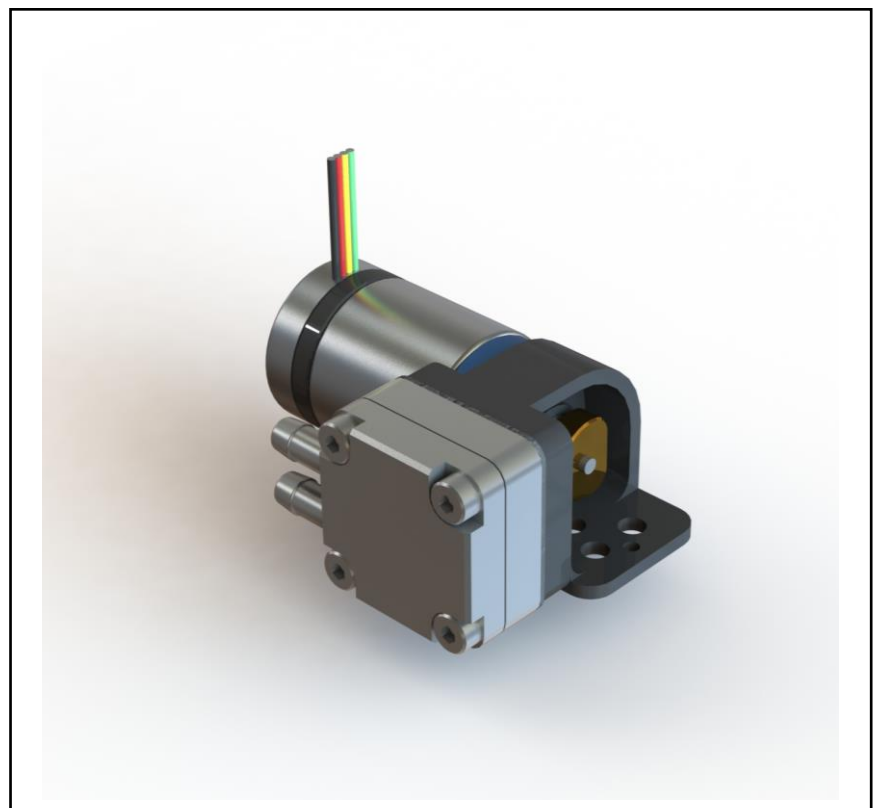


Features

- Variable flow rate and low power consumption
- Brushless Motor
- Small size only 39x28x17mm
- Useable with solar power, PSU or batteries
- Wide range of chemical resistance
- Light weight 38g

RS PRO GAS COMPRESSOR PUMP

RS Stock No.: 817-0716



RS PRO is the own brand of RS. The RS PRO Seal of Approval is your assurance of professional quality, a guarantee that every part is rigorously tested, inspected, and audited against demanding standards. Making RS PRO the Smart Choice for our customers.

Product Description

The D260S/BLX range of gas compressor pumps are constructed from stainless steel with stainless steel tubing connectors. They are fitted with Viton diaphragm and valves for its great mechanical properties and its wide range of chemical resistances. The pump uses efficient barbed style connectors designed for 2.4mm ID semi-flexible tubing.

The D260 is suitable for applications such as : Medical devices, Analysis systems, Gas detection and monitoring, Air cooling systems, Precision flow, Battery + Solar operated systems.

General Specifications

Type	Gas Compressor Pump
Maximum Flow Rate	0.4l/min (air)
Input Connection	3.6mm Hose barb connector
Input Connection Size	2.4mm ID flexible tubing
Output Connection Size	2.4mm ID flexible tubing
Maximum Vacuum/Pressure	-400/1000 mBar
Wetted Materials	316 Stainless steel, FKM
Coupling Type	Direct drive
Head Type	Single
Noise Level	<50dB measured 1m from pump
Auto On/Off Switch	No

Mechanical Specifications

Dimensions	17x28x39mm
Weight	38g

Electrical Specifications

Connection	Stripped wires (DC)
Supply Voltage	3-6v
Input Power	0.8-1.1W (@ 6V)

Protection Category

Safety Category Level	S1
IP Rating	IP 41

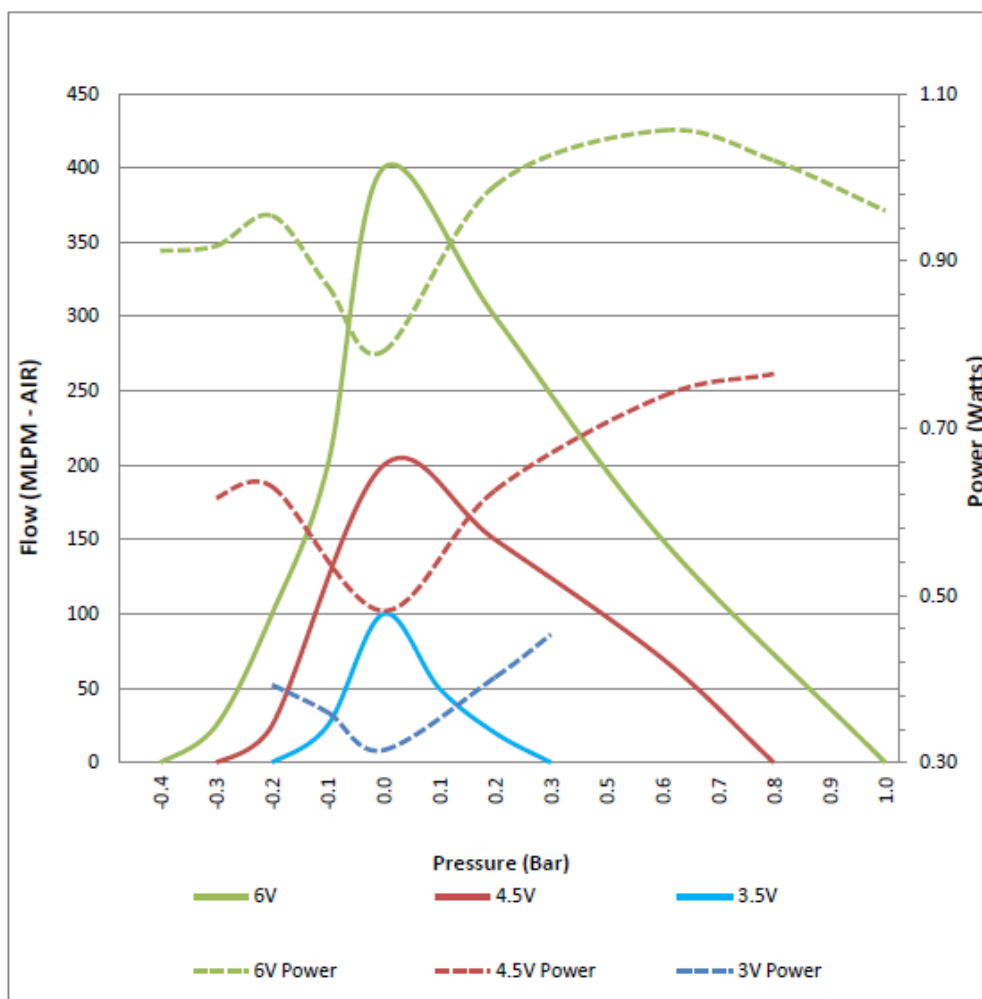
Approvals

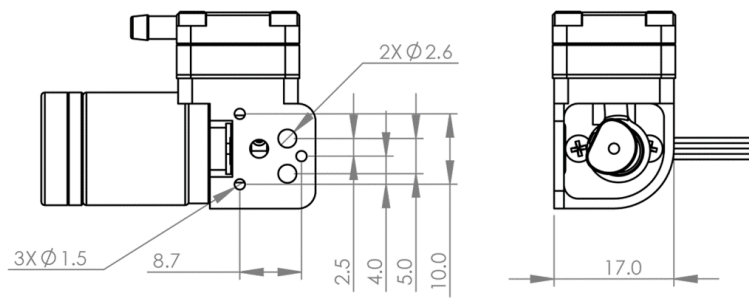
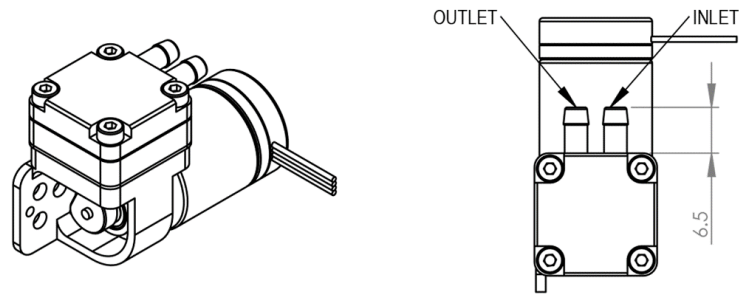
Compliance/Certifications	ISO 9001 Quality Control Standard
Declarations	TCS Declaration of Conformity - RoHS Directive 2011/65/EU, SVCH, CMRT, 3TG and REACH compliant.

Similar Products

Stock No.	Brand	Maximum Flow Rate	Input Connection	Input Power
702-6898	RS PRO	400ml/min	DC	2-4.5V
817-0725	RS PRO	105ml/min (liquid)	DC	2-4.5V
817-0728	RS PRO	75ml/min (liquid)	DC	3-6V

TEST CONDUCTED ON AIR AT 3.5, 4.5 AND 6V.





CONNECTORS TO SUIT 2.4MM ID FLEXIBLE TUBING

