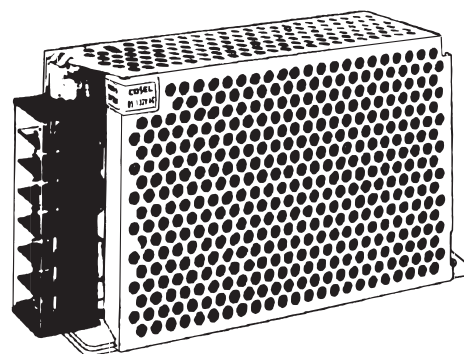


# R Series Attachment

## BASE Attachment

Plate model	Applicable models
F-R10-1	R10A
F-R15-1	R15A
F-R25-1	R25A
F-R50-1	R50A
F-R100-1	R100
F-R150-1	R150

Example  
(R100)



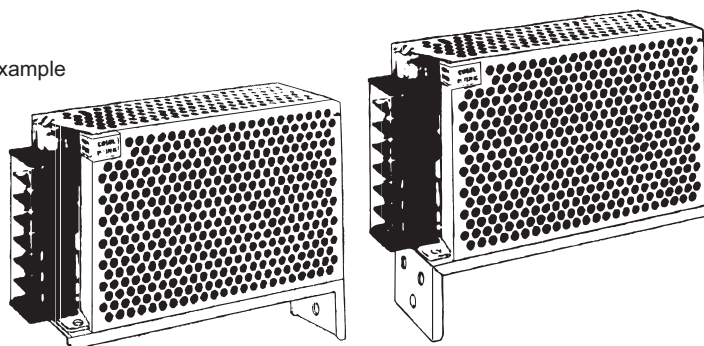
< TOP VIEW > (Unit : mm) (Tolerance : ±1)

<p><b>F-R10-1</b></p> <p>Size</p> <p>           * Material : SPCC            * Thickness : 2.0            * Weight : 40g max         </p>	<p><b>F-R15-1</b></p> <p>Size</p> <p>           * Material : SPCC            * Thickness : 2.0            * Weight : 50g max         </p>
<p>* M3 Flat screw is requested when mounting. Please check the instruction manual for the size of screw.</p>	
<p>Mounting hole size</p> <p>FRONT←</p>	<p>Mounting hole size</p> <p>FRONT←</p>
<p><b>F-R25-1</b></p> <p>Size</p> <p>           * Material : SPCC            * Thickness : 2.0            * Weight : 65g max         </p>	<p><b>F-R50-1</b></p> <p>Size</p> <p>           * Material : SPCC            * Thickness : 2.0            * Weight : 80g max         </p>
<p>* M3 Flat screw is requested when mounting. Please check the instruction manual for the size of screw.</p>	
<p>Mounting hole size</p> <p>FRONT←</p>	<p>Mounting hole size</p> <p>FRONT←</p>
<p><b>F-R100-1</b></p> <p>Size</p> <p>           * Material : SPCC            * Thickness : 2.0            * Weight : 110g max         </p>	<p><b>F-R150-1</b></p> <p>Size</p> <p>           * Material : SPCC            * Thickness : 2.0            * Weight : 150g max         </p>
<p>* M4 Flat screw is requested when mounting. Please check the instruction manual for the size of screw.</p>	
<p>Mounting hole size</p> <p>FRONT←</p>	<p>Mounting hole size</p> <p>FRONT←</p>

## FRONT • REVERSE Attachment

Plate model	Applicable models
F-K10-2	R10A
F-R15-2	R15A
F-R25-2	R25A
F-R50-2	R50A
F-R100-2	R100
F-R150-2	R150

Example



〈 TOP VIEW 〉 (Unit : mm) (Tolerance : ±1)

<p><b>F-K10-2</b></p> <p>Size</p> <p>★ Material : SPCC ★ Thickness : 1.6 ★ Weight : 60g max</p>	<p><b>F-R15-2</b></p> <p>Size</p> <p>★ Material : SPCC ★ Thickness : 1.6 ★ Weight : 75g max</p>
<p>★ M3 screw is requested when mounting. Please check the instruction manual for the size of screw.</p>	
<p><b>F-R25-2</b></p> <p>Size</p> <p>★ Material : SPCC ★ Thickness : 1.6 ★ Weight : 85g max</p>	<p><b>F-R50-2</b></p> <p>Size</p> <p>★ Material : SPCC ★ Thickness : 1.6 ★ Weight : 100g max</p>
<p>★ M3 screw is requested when mounting. Please check the instruction manual for the size of screw.</p>	
<p><b>F-R100-2</b></p> <p>Size</p> <p>★ Material : SPCC ★ Thickness : 1.6 ★ Weight : 130g max</p>	<p><b>F-R150-2</b></p> <p>Size</p> <p>★ Material : SPCC ★ Thickness : 2.0 ★ Weight : 220g max</p>
<p>★ M4 screw is requested when mounting. Please check the instruction manual for the size of screw.</p>	

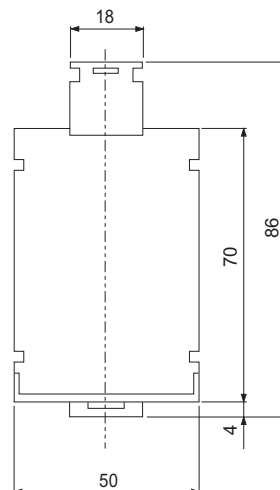
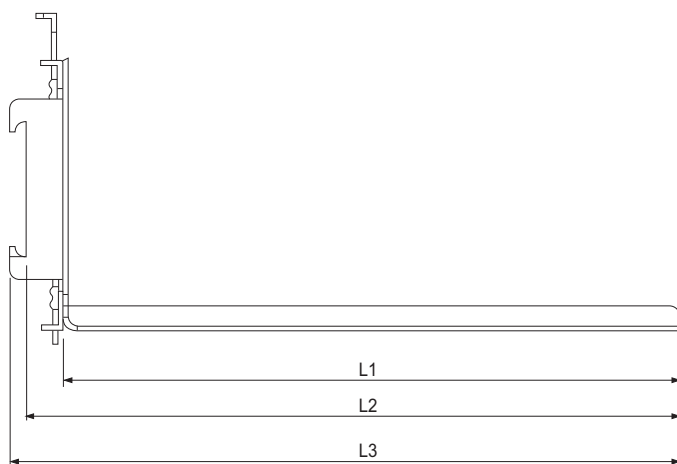
# Din rail Attachment Plate

## APPLICABLE TO MODEL

Din rail width : 35mm

Plate model	Model	screws for installation	
		Type	Qty
FD-A	R50A RMB30A, RMC30A	M3	2pcs
FD-B	MMC8A R10A, R15A, R25A RMB15A, RMC15A	M3	2pcs

## EXTERNAL VIEW



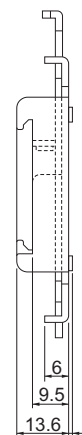
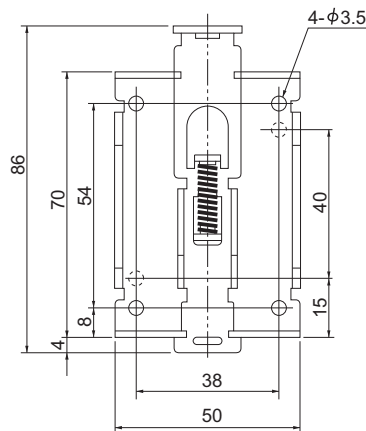
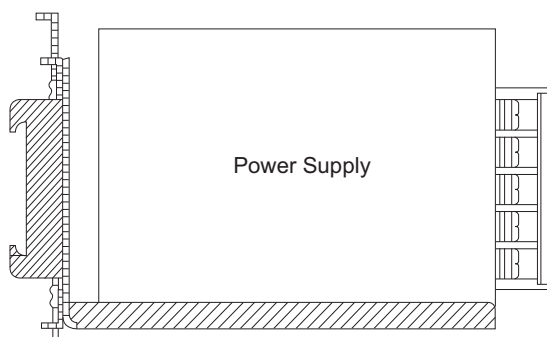
(Unit : mm)

Model	L1	L2	L3
FD-A	165	174.5	178.6
FD-B	115	124.5	128.6

- ★ Material : SPCC
- ★ Thickness : 1.6
- ★ Tolerance :  $\pm 1$
- ★ Weight : FD-A 290g max  
FD-B 240g max

## DIN RAIL ATTACHMENT MODEL : FD-SP

## MOUNTING EXAMPLE



- ★ Material : SPCC
- ★ Thickness : 1.6
- ★ Tolerance :  $\pm 1$
- ★ Weight : 85g max

Harness for input/output(J type) is prepared in R series.

# R Series

## RMB Series

## RMC Series

### Mating harness

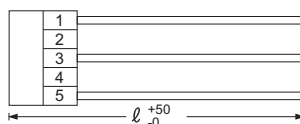
Model	Harness model #	
	Input	Output
R10A・15A・25A・50A	H-IN-3	H-OU-9
RMB15A・30A・50A		H-OU-16
RMC15A・30A・50A		H-OU-15

#### ●Model number

## H-IN-3

Housing : VHR-5N (J.S.T.)  
Pin : SVH-21T-P1.1 (J.S.T.)  
Weight : 20g max

#### ●Type



#### ●Wire

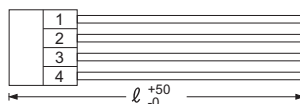
Pin #	Wire	AWG	Color	Length ℓ (mm)
1	UL1015	20	white	500
2				
3	UL1015	20	black	500
4				
5	UL1015	20	green	500

#### ●Model number

## H-OU-9

Housing : VHR-4N (J.S.T.)  
Pin : SVH-21T-P1.1 (J.S.T.)  
Weight : 40g max

#### ●Type



#### ●Wire

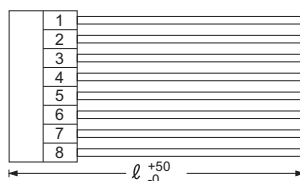
Pin #	Wire	AWG	Color	Length ℓ (mm)
1	UL1015	18	black	500
2	UL1015	18	black	500
3	UL1015	18	red	500
4	UL1015	18	red	500

#### ●Model number

## H-OU-15

Housing : VHR-8N (J.S.T.)  
Pin : SVH-21T-P1.1 (J.S.T.)  
Weight : 80g max

#### ●Type



#### ●Wire

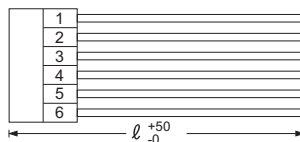
Pin #	Wire	AWG	Color	Length ℓ (mm)
1	UL1015	18	purple	500
2	UL1015	18	gray	500
3	UL1015	18	gray	500
4	UL1015	18	orange	500
5	UL1015	18	black	500
6	UL1015	18	black	500
7	UL1015	18	red	500
8	UL1015	18	red	500

#### ●Model number

## H-OU-16

Housing : VHR-6N (J.S.T.)  
Pin : SVH-21T-P1.1 (J.S.T.)  
Weight : 60g max

#### ●Type



#### ●Wire

Pin #	Wire	AWG	Color	Length ℓ (mm)
1	UL1015	18	gray	500
2	UL1015	18	orange	500
3	UL1015	18	black	500
4	UL1015	18	black	500
5	UL1015	18	red	500
6	UL1015	18	red	500

# Mouser Electronics

Authorized Distributor

Click to View Pricing, Inventory, Delivery & Lifecycle Information:

Cosel:

[F-R25-2](#) [F-R10-1](#) [F-R50-2](#) [H-OU-16](#) [F-R150-1](#) [F-R15-2](#) [H-OU-9](#) [F-R15-1](#) [H-OU-15](#) [F-R100-2](#) [F-R150-2](#) [F-R100-1](#) [F-R25-1](#) [F-R50-1](#) [H-IN-3](#) [N-P150](#) [N-P30](#) [F-KR100-1](#) [N-P100](#) [F-KR50-1](#) [N-P50](#) [N-P15](#)