

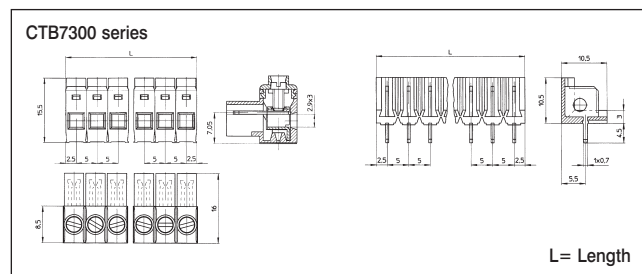
5mm Pitch Plug-in for Vertical or 90° mounting Rising Clamp Terminal

Features

- Unique 36 pole strip
- Easily cut to required number of poles
- Can be supplied pre-cut to specified number of poles
- Dual horizontal or vertical mounting
- Moulded in grey UL94-V0 flame retardant Lexan
- Professional rising clamp terminals
- 4mm² cable entry
- cUL, UL, CE approved
- Optional polarising clips
- Anti solder wicking
- Guided pin alignment
- Captive screws

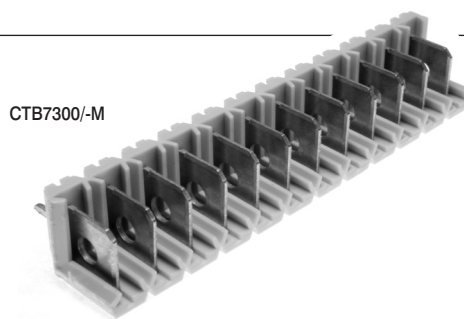
Specifications

Rating	14A/380V, UL=14A, CUL=14A, IMQ=18A
Dielectric strength	≥2.5kV/60sec
Insulation resistance	≥5MΩ
Working temperature	-20°C to 125°C
Short period	160°C
Moulding	UL94-V0 flame retardant Lexan
Pin/terminal	5μ tinned, nickel plated brass
Rising clamp	Zinc plated steel
Screw/torque	M2.5 steel, 6μ zinc colour passivated and tropicalised/0.4Nm
Recommended PCB hole size	ø1.3mm



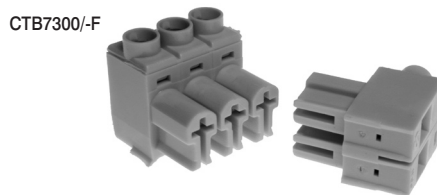
PCB mounting male: 1-36 poles

Type No.	Poles	Length	Type No.	Poles	Length
CTB7300/2M	2	10mm	CTB7300/8M	8	40mm
CTB7300/3M	3	15mm	CTB7300/9M	9	45mm
CTB7300/4M	4	20mm	CTB7300/10M	10	50mm
CTB7300/5M	5	25mm	CTB7300/11M	11	55mm
CTB7300/6M	6	30mm	CTB7300/12M	12	60mm
CTB7300/7M	7	35mm	CTB7300/36M	36	180mm



Female connector: 1-36 poles

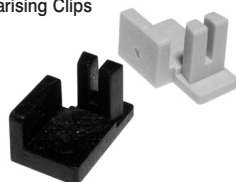
Type No.	Poles	Length	Type No.	Poles	Length
CTB7300/2F	2	10mm	CTB7300/8F	8	40mm
CTB7300/3F	3	15mm	CTB7300/9F	9	45mm
CTB7300/4F	4	20mm	CTB7300/10F	10	50mm
CTB7300/5F	5	25mm	CTB7300/11F	11	55mm
CTB7300/6F	6	30mm	CTB7300/12F	12	60mm
CTB7300/7F	7	35mm	CTB7300/36F	36	180mm



Polarising Clip

Type No.	Quantity
CTB7300/C	1 pair

Polarising Clips



Fitted to each end of the male connector ensures correct vertical or horizontal orientation of the female part