

Printed Circuit Mount

LPI Series

Low Profile International Transformers
Encapsulated

Direct Plug-in Replacement for Original FlatHead™ Design

Signal's LPI series are transformer which utilize unique insulating techniques including full encapsulation to meet international safety requirements. These transformers are ideal for low power applications where minimum height and reduced magnetic radiation are required.



Features and Benefits

- Encapsulated in order to meet harsh environmental conditions
- Rigid pin construction for easier board insertion and higher reliability
- Mounting holes provided for greater resistance to shock & vibration
- Improved electrical characteristics - regulation, temperature rise and efficiency.
- Reduced magnetic radiation

General Specifications

- Power - 2.5 VA to 18 VA
- Dielectric Strength - 4000 Vrms Hipot
- Primaries - Dual primaries, 115/230 V - 50/60 Hz
- Secondaries - Series or parallel
- Height - 1.050" to 1.22"
- Insulation System - Class B, 130° C

Agency Certifications

- UL recognized to UL 506 / UL 5085-2, File # E63829
- CSA certified to C22.2 #66.1, File # 221070
- TUV Rheinland Certified IEC / EN 60950, License # 744985



belfuse.com/signal

Part Number Selection

| Part Number | VA | Secondary RMS Rating | |
|-------------|------|----------------------|----------------|
| | Size | Series | Parallel |
| 10-250-LPI | 2.5 | 10 VCT @ 250 mA | 5 V @ 500 mA |
| 12-200-LPI | 2.5 | 12.6 VCT @ 200 mA | 6.3 V @ 400 mA |
| 16-150-LPI | 2.5 | 16 VCT @ 150 mA | 8 V @ 300 mA |
| 20-125-LPI | 2.5 | 20 VCT @ 125 mA | 10 V @ 250 mA |
| 24-100-LPI | 2.5 | 24 VCT @ 100 mA | 12 V @ 200 mA |
| 30-85-LPI | 2.5 | 30 VCT @ 85 mA | 15 V @ 170 mA |
| 34-75-LPI | 2.5 | 34 VCT @ 75 mA | 17 V @ 150 mA |
| 40-60-LPI | 2.5 | 40 VCT @ 60 mA | 20 V @ 120 mA |
| 56-45-LPI | 2.5 | 56 VCT @ 45 mA | 28 V @ 90 mA |
| 230-10-LPI | 2.5 | 230 VCT @ 10 mA | 115 V @ 20 mA |
| 10-600-LPI | 6 | 10 VCT @ 600 mA | 5 V @ 1.2 A |
| 12-450-LPI | 6 | 12.6 VCT @ 450 mA | 6.3 V @ 900 mA |
| 16-350-LPI | 6 | 16 VCT @ 350 mA | 8 V @ 700 mA |
| 20-300-LPI | 6 | 20 VCT @ 300 mA | 10 V @ 600 mA |
| 24-250-LPI | 6 | 24 VCT @ 250 mA | 12 V @ 500 mA |
| 30-200-LPI | 6 | 30 VCT @ 200 mA | 15 V @ 400 mA |
| 34-170-LPI | 6 | 34 VCT @ 170 mA | 17 V @ 340 mA |
| 40-150-LPI | 6 | 40 VCT @ 150 mA | 20 V @ 300 mA |
| 56-100-LPI | 6 | 56 VCT @ 100 mA | 28 V @ 200 mA |
| 230-25-LPI | 6 | 230 VCT @ 25 mA | 115 V @ 50 mA |
| 10-900-LPI | 9 | 10 VCT @ 900 mA | 5 V @ 1.8 A |
| 12-725-LPI | 9 | 12.6 VCT @ 725 mA | 6.3 V @ 1.45 A |
| 16-560-LPI | 9 | 16 VCT @ 560 mA | 8V @ 1.12 A |
| 20-450-LPI | 9 | 20 VCT @ 450 mA | 10 V @ 900 mA |
| 24-375-LPI | 9 | 24 VCT @ 375 mA | 12 V @ 750 mA |

| Part Number | VA | Secondary RMS Rating | |
|-------------|------|----------------------|----------------|
| | Size | Series | Parallel |
| 30-300-LPI | 9 | 30 VCT @ 300 mA | 15 V @ 600 mA |
| 34-265-LPI | 9 | 34 VCT @ 265 mA | 17 V @ 530 mA |
| 40-225-LPI | 9 | 40 VCT @ 225 mA | 20 V @ 450 mA |
| 56-160-LPI | 9 | 56 VCT @ 160 mA | 28 V @ 320 mA |
| 230-40-LPI | 9 | 230 VCT @ 40 mA | 115 V @ 80 mA |
| 10-1200-LPI | 12 | 10 VCT @ 1.2 A | 5 V @ 2.4 A |
| 12-900-LPI | 12 | 12.6 VCT @ 900 mA | 6.3 V @ 1.8 A |
| 16-700-LPI | 12 | 16 VCT @ 700 mA | 8 V @ 1.4 A |
| 20-600-LPI | 12 | 20 VCT @ 600 mA | 10 V @ 1.2 A |
| 24-500-LPI | 12 | 24 VCT @ 500 mA | 12 V @ 1 A |
| 30-400-LPI | 12 | 30 VCT @ 400 mA | 15 V @ 800 mA |
| 34-340-LPI | 12 | 34 VCT @ 340 mA | 17 V @ 680 mA |
| 40-300-LPI | 12 | 40 VCT @ 300 mA | 20 V @ 600 mA |
| 56-200-LPI | 12 | 56 VCT @ 200 mA | 28 V @ 400 mA |
| 230-50-LPI | 12 | 230 VCT @ 50 mA | 115 V @ 100 mA |
| 10-1800-LPI | 18 | 10 VCT @ 1.8 A | 5 V @ 3.6 A |
| 12-1500-LPI | 18 | 12.6 VCT @ 1.5 A | 6.3 V @ 3 A |
| 16-1100-LPI | 18 | 16 VCT @ 1.1 A | 8 V @ 2.2 A |
| 20-900-LPI | 18 | 20 VCT @ 900 mA | 10 V @ 1.8 A |
| 24-750-LPI | 18 | 24 VCT @ 750 mA | 12 V @ 1.5 A |
| 30-600-LPI | 18 | 30 VCT @ 600 mA | 15 V @ 1.2 A |
| 34-500-LPI | 18 | 34 VCT @ 500 mA | 17 V @ 1 A |
| 40-450-LPI | 18 | 40 VCT @ 450 mA | 20 V @ 900 mA |
| 56-320-LPI | 18 | 56 VCT @ 320 mA | 28 V @ 640 mA |
| 230-75-LPI | 18 | 230 VCT @ 75 mA | 115 V @ 150 mA |



Custom versions available upon request.

128 Atlantic Avenue, Lynbrook, NY 11563

Toll Free 866-239-5777 | Tel 516-239-5777 | Fax 516-239-7208

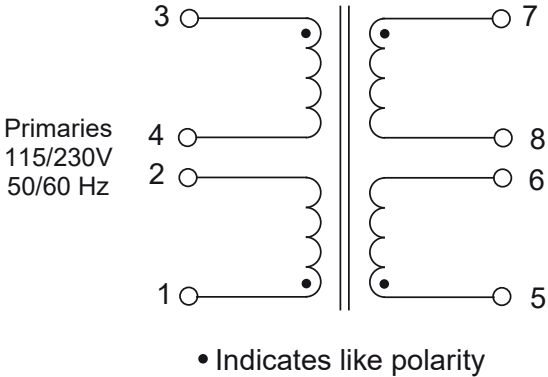
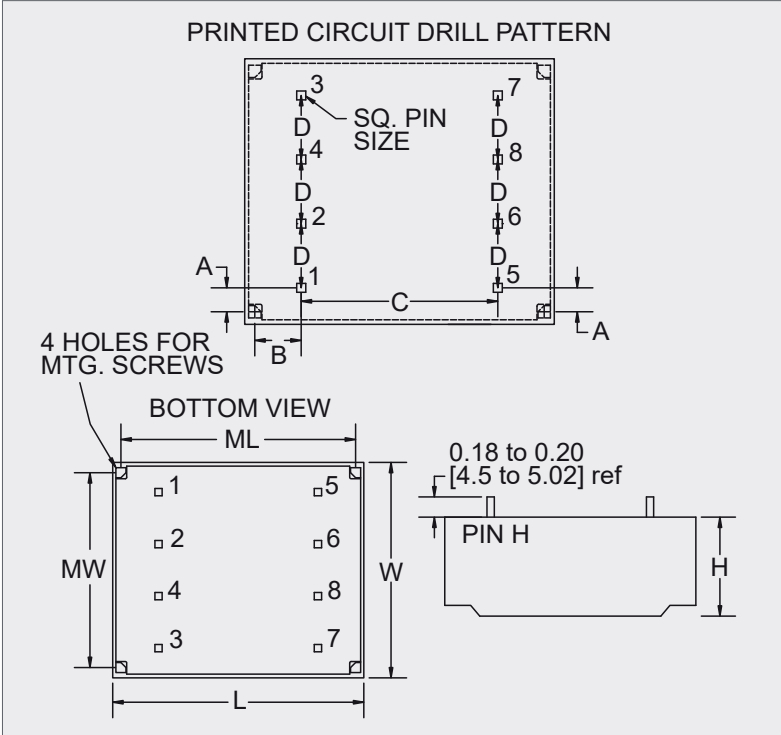
sales@signaltransformer.com | techhelp@signaltransformer.com

belfuse.com/signal



Mechanical Specifications

| VA | Dimensions | | | | | | | | | | Weight | Self Tap Screw Size | Pin Size |
|------|---------------|---------------|----------------|----------------|----------------|----------------|----------------|----------------|----------------|----------------|----------|---------------------|-------------|
| | A | B | C | D | L | W | H | ML | MW | | | | |
| Size | Inches (mm) | | | | | | | | | | lbs (kg) | | Inches (mm) |
| 2.5 | 0.19 (4.8) | 0.29 (7.2) | 1.61 (40.9) | 0.37 (9.4) | 2.37 (60.2) | 1.65 (42.1) | 0.72 (18.3) | 2.19 (55.6) | 1.50 (38.1) | 0.27 (0.12) | #4 | .025 (.635) | |
| 6 | 0.19 (4.8) | 0.29 (7.2) | 1.61 (40.9) | 0.37 (9.4) | 2.37 (60.2) | 1.65 (42.1) | 0.89 (22.7) | 2.19 (55.6) | 1.50 (38.1) | 0.39 (0.17) | #4 | .025 (.635) | |
| 9 | 0.19 (4.8) | 0.29 (7.2) | 1.61 (40.9) | 0.37 (9.4) | 2.37 (60.2) | 1.65 (42.1) | 1.08 (27.4) | 2.19 (55.6) | 1.50 (38.1) | 0.51 (0.23) | #4 | .025 (.635) | |
| 12 | 0.22 (5.6) | 0.20 (5.1) | 2.02 (51.3) | 0.50 (12.7) | 2.63 (66.8) | 2.19 (55.6) | 1.06 (26.6) | 2.38 (60.4) | 1.94 (49.2) | 0.75 (0.34) | #6 | .036 (.914) | |
| 18 | 0.22 (5.6) | 0.20 (5.1) | 2.02 (51.3) | 0.50 (12.7) | 2.63 (66.8) | 2.19 (55.6) | 1.18 (30.0) | 2.38 (60.4) | 1.94 (49.2) | 0.95 (0.43) | #6 | .036 (.914) | |



Custom versions available upon request.



128 Atlantic Avenue, Lynbrook, NY 11563
 Toll Free 866-239-5777 | Tel 516-239-5777 | Fax 516-239-7208
 sales@signaltransformer.com | techhelp@signaltransformer.com

belfuse.com/signal