

6

5

4

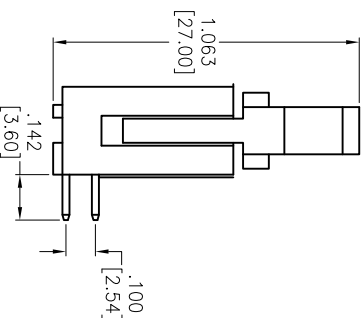
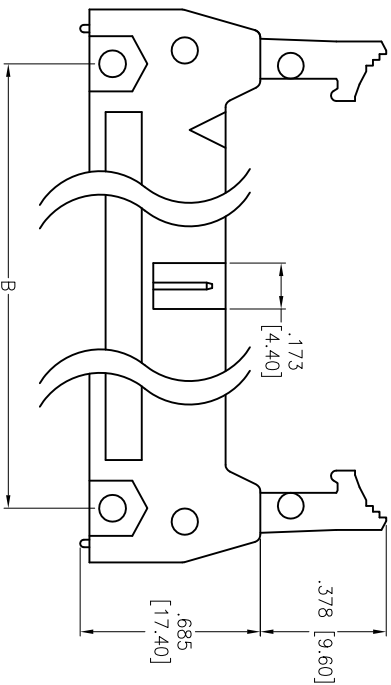
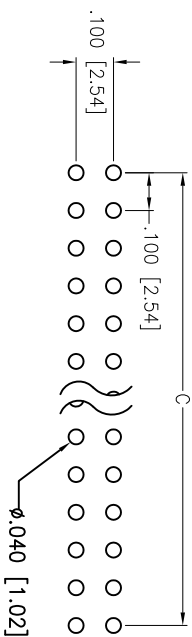
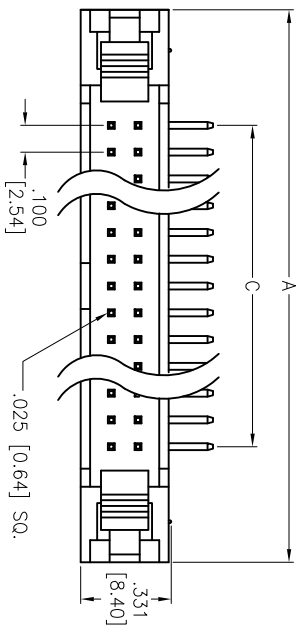
3

2

1

APPROVED: _____

DATE: _____ TITLE: _____



SPECIFICATIONS:

Material:

Insulator: PBT, rated UL 94V-0

Insulator color: Black

Contacts: Brass

Plating:

Gold flash over Nickel underplate overall

Electrical:

Operating voltage: 250 VAC max

Current rating: 3 Amps max

Contact resistance: 20 mohms max

Insulation resistance: 5,000 Mohms min @ 500 VDC

Dielectric withstanding voltage: 1,000 VAC for 1 minute

Temperature Rating:

Operating temperature: -55°C to +105°C

Environmental:

Lead free, RoHS compliant

Positions: 10, 14, 16, 20, 24, 26, 30, 34, 40, 50, 60, 64

A = .100 [2.54] x No. of Spaces + .860 [21.84]

B = .100 [2.54] x No. of Spaces + .460 [11.68]

C = .100 [2.54] x No. of Spaces

UNLESS OTHERWISE SPECIFIED ALL DIMENSIONS ARE IN INCHES [MM]

TOLERANCES: EXCEPT AS NOTED

INCHES

.X ± .10 ØX ± .10

.XX ± .020 ØXX ± .015

.XXX ± .015 ØXXX ± .010

APPROVALS

DRAWN SS 3/29/05

CHECKED

APPROVED

ADAM TECH

909 Railway Avenue, Union, NJ 07083

Phone: 908-687-5000 Fax: 908-687-5710

TITLE: LATCHED BOX HEADER, RIGHT ANGLE, LONG ELECTOR LATCHES

SIZE X PART NO. MHR-XX-HUAL REV. A

REF: S00089T SCALE: NTS SHEET 1 OF 1

Rev	AWO #	Description	Date	Appr
-		RELEASED	3/29/05	
A		REVISED SHAPE	10/28/11	

6

5

4

3

2

1

