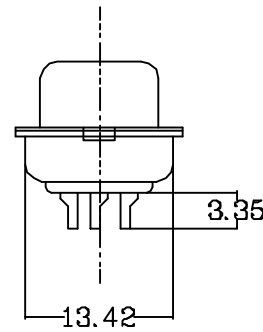
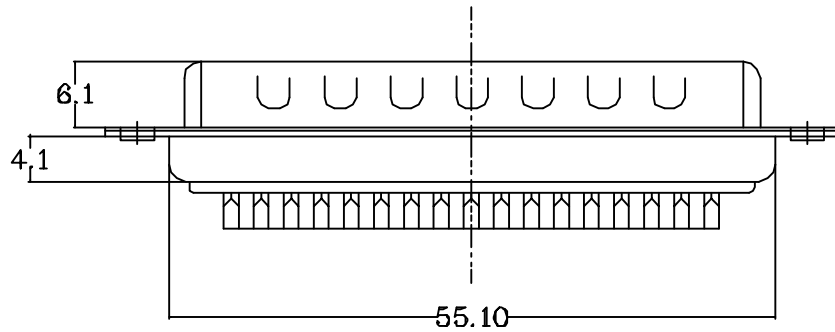
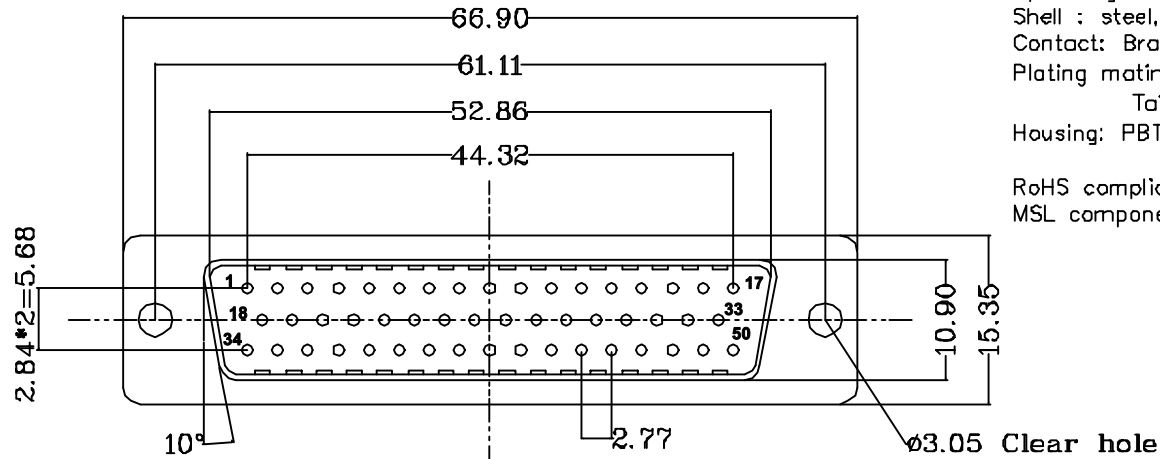


This document is the property of Amphenol Corporation and is delivered on the express condition that it is not to be disclosed, reproduced or used, in whole or in part, for the manufacture or sale by anyone other than Amphenol Corporation without its prior consent, and that no right is granted to disclose or to use any information in this document.

Specifications

Contact Resistance: 30m ohms max. at DC 100mA
 Insulator Resistance: 1000M ohms min. at DC 500V
 Current Rating: 5 AMP
 Dielectric Withstanding
 Voltage: AC 1000V For 1 minute
 Operating Temperature: -55°C ~ +105°C
 Shell : steel, tin plated
 Contact: Brass ,
 Plating mating area =Selective gold over 50" Ni (see table below)
 Tails = Tin over 50" Ni
 Housing: PBT & 30% Glass Fiber (UL 94V-D)

RoHS compliant
 MSL components : level 3



Drawing number	Contact plating
L717SDD50P	Gold flash
L777SDD50P	.15μ inches
L717SDD50P C309	.30μ inches

TOLERANCE (mm)	APPROVALS	DATE	TITLE	AMPHENOL	
X .5	DRAWN	06/07/08	17SD SERIES D-SUB CONNECTOR SOLDER CUP VERSION, PLUG	AMPHENOL SOCAPEX	
XX .01	CHECKED	06/07/08		Dale Plant	
XXX .008	APPROVED	06/07/08		Scale N.A.	Sheet 1 of 1
	UNIT: MM	SIZE: A4	DRAWING NO: L7-7SDD50P ----	REV: A	