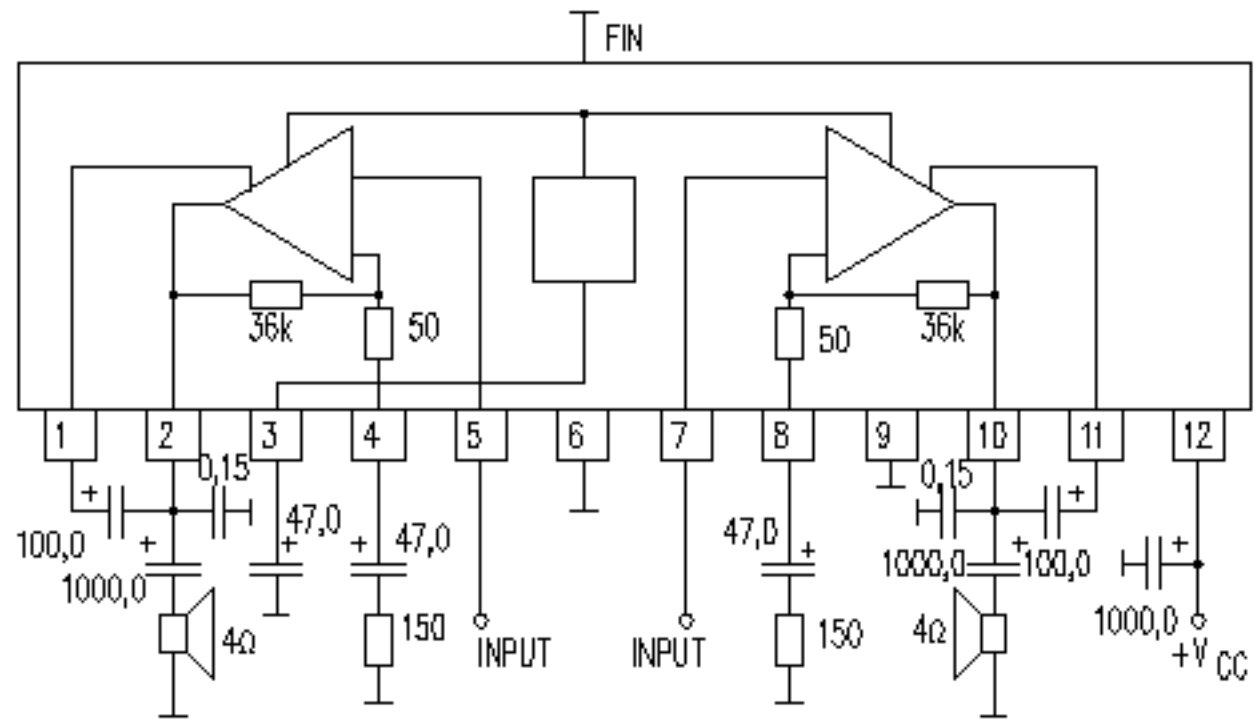


TA7233P

POWER AMPLIFIER 2x4,5W



VCC MAX = 16V
 VCC TYP = 12V
 VCC RNG = 6...12V

Po = 2x4,5W
 RL = 4 Ohm
 TDH = 10%

IcCD TYP = 35mA
 IcCD MAX = 60mA
 I MAX = 2,5A

RIN = 30k
 Gain = 45dB
 Noise = 4mkV

RTH-C = -
 Case SIL-12